

Converting Colors

CIELCh(9, 14.826, 14.458)

Have a look what the booklet for
CIELCh(9, 14.826, 14.458) contains.

CIELCh(9, 14.859, 13.701)	3
<i>Conversions</i>	4
<i>Details</i>	6
<i>Harmonies</i>	11
<i>Previews</i>	20
<i>Color Blindness Simulation</i>	23
<i>CSS Examples</i>	26

Color

CIELCh(9, 14.859, 13.701)

Conversions

Conversions Part 1

Format	Color
Hex	2C1115
RGB	44, 17, 21
RGB Percent	17%, 7%, 8%
CMY	0.8267, 0.9326, 0.9169
CMYK	0.00, 0.61, 0.52, 0.83
HSL	351°, 44%, 12%
HSV	351°, 61%, 17%
XYZ	1.3874, 1.0010, 0.8388
YIQ	25.5290, 14.8080, 6.9680

Conversions

Conversions Part 2

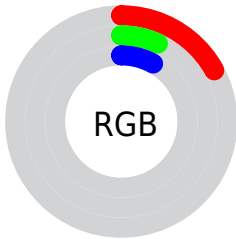
Format	Color
RYB	44, 17, 21
Decimal	2887957
CIELab	9.00, 14.44, 3.52
CIELCh	9, 14.859, 13.701
Yxy	1.0010, 0.4299, 0.3102
Android (android.graphics.Color)	4281078037 (0xFF2C1115)
YUV	25.5290, -2.2328, 16.1991
Hunter-Lab	10.0051, 7.2425, 2.0329

Details

The CIELCh color **9, 14.859, 13.701** is a dark color, and the websafe version is hex **330000**. A complement of this color would be **16, 11.561, 182.773**, and the grayscale version is **9, 0.003, 296.813**.

A 20% lighter version of the original color is **29, 14.617, 14.695**, and **0, 0.000, 0.000** is the 20% darker color. If you saturate the color by 10%, you get **8, 17.281, 14.060**, and if you desaturate by 10%, it is **10, 12.282, 12.371**.

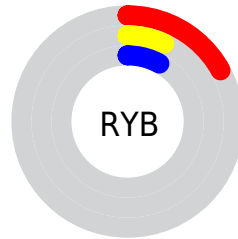
Distribution



 Red (17%)

 Green (7%)

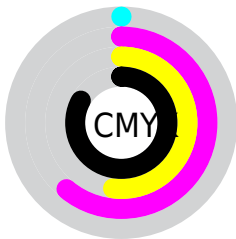
 Blue (8%)



 Red (17%)

 Yellow (7%)

 Blue (8%)

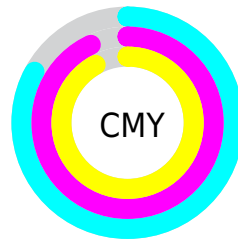


 Cyan (0%)

 Magenta (61%)

 Yellow (52%)

 Black (83%)



 Cyan (83%)

 Magenta (93%)

 Yellow (92%)

Brightness & Saturation Gradients

These gradients show how the CIELCh color 9, 14.859, 13.701 changes by changing the brightness by 10 percent. The first figure shows a shift by +10% for each color and the second figure -10%.

Similar to the brightness gradients but the following saturation gradients show a change of the CIELCh color 9, 14.859, 13.701 by changing the saturation by 10% instead.



9, 14.859, 13.701



9, 14.859, 13.701



99, 14.859, 13.701



0, 14.859, 13.701



29, 14.859, 13.701



39, 14.859, 13.701



49, 14.859, 13.701



59, 14.859, 13.701



69, 14.859, 13.701



79, 14.859, 13.701



89, 14.859, 13.701



9, 14.859, 13.701



9, 14.859, 13.701

■ 8, 17.281, 14.060

■ 10, 12.282, 12.371

■ 7, 19.266, 14.346

■ 12, 9.710, 11.001

■ 6, 21.062, 13.959

■ 13, 7.200, 9.847

■ 5, 22.582, 13.370

■ 15, 4.778, 8.861

■ 16, 2.458, 7.989

■ 18, 0.244, 6.579

■ 20, 1.863, 186.799

■ 21, 3.867, 186.183

■ 23, 5.773, 185.661

Harmonies

Complementary

The Complementary color scheme is a pair of colors which are on the opposite of each other on the color wheel.



9, 14.859, 13.701



16, 11.561, 182.773

Rectangle

The Rectangle color scheme consists of four colors that form a rectangle on the color wheel.



9, 14.859, 13.701



9, 14.859, 63.701



9, 14.859, 193.701



9, 14.859, 243.701

Sweetspot

The Sweet Spot groups the original color and five complimentary colors.



9, 14.858, 13.704



21, 5.144, 8.680



9, 21.831, 322.452



9, 3.623, 8.747



65, 0.008, 296.813



12, 0.003, 296.813

Same Dimension

The Same Dimension uses a secret algorithm to generate beautiful new colors.



9, 14.858, 13.704



12, 22.768, 17.500



12, 12.208, 53.045



7, 1.140, 7.608



16, 41.536, 27.291



45, 84.769, 33.571

Inverse Universe

The Inverse Universe completely reimagines the original color for something new.



9, 14.858, 13.704



12, 22.768, 17.500



13, 9.386, 245.344



7, 1.140, 7.608



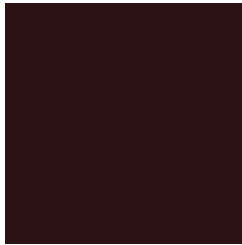
16, 41.536, 27.291



45, 84.769, 33.571

Previews

White Background



This preview shows how the CIELCh color 9, 14.859, 13.701 looks on a white background.

Color Contrast Check

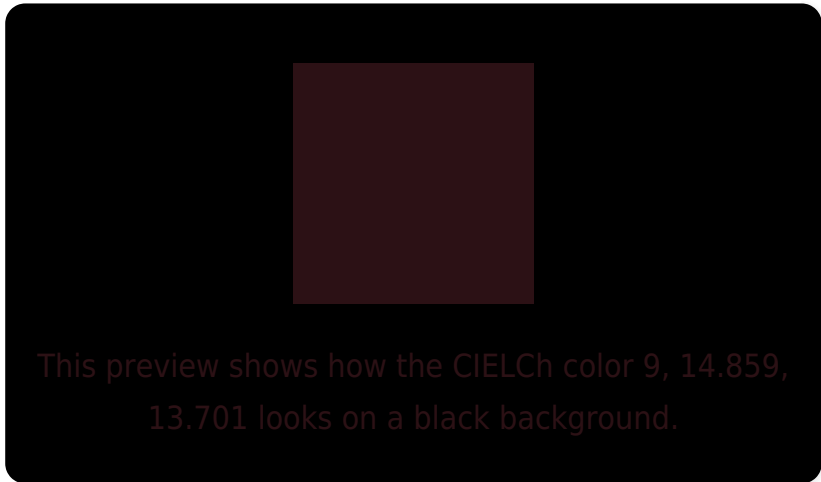
Large Text (above 18pt) WCAG AA ✓ Pass

Any Text WCAG AA ✓ Pass

Large Text (above 18pt) WCAG AAA ✓ Pass

Any Text WCAG AAA ✓ Pass

Black Background



Color Contrast Check

Large Text (above 18pt) WCAG AA × Fail

Any Text WCAG AA × Fail

Large Text (above 18pt) WCAG AAA × Fail

Any Text WCAG AAA × Fail

If you want to check with other color combinations, try the [Color Contrast Checker](#).

CIELCh 9, 14.859, 13.701

Background



This preview shows how black text looks on a background with the CIELCh color 9, 14.859, 13.701.

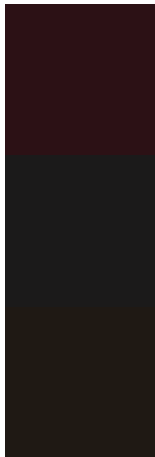


This preview shows how white text looks on a background with the CIELCh color 9, 14.859, 13.701.

Color Blindness Simulation

Color vision deficiency is a very complex topic, and I could not describe the different causes any better than Wikipedia does, so if you want to learn more, you should check out their [article about color blindness](#).

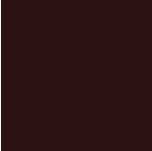
Dichromacy



Original Color
9, 14.859, 13.701

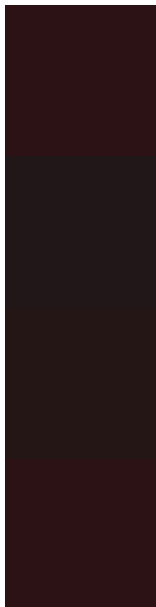
Protanopia
9, 0.514, 19.275

Deuteranopia
9, 4.880, 66.708



Tritanopia
9, 14.442, 20.841

Trichromacy



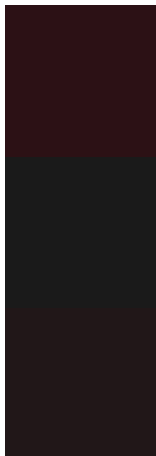
Original Color
9, 14.859, 13.701

Protanomaly
9, 5.394, 13.285

Deuteranomaly
9, 7.935, 31.348

Tritanomaly
9, 14.364, 18.386

Monochromacy



Original Color
9, 14.859, 13.701

Achromatopsia
9, 0.003, 296.813

Achromatomaly
9, 5.394, 13.285

CSS Examples

Text

The CSS property to change the color of the text to CIELCh 9, 14.859, 13.701 is called "color". The color property can be set on classes, ids or directly on the HTML element.

This example shows how text in the color `rgb(44, 17, 21)` looks like.

```
.text, #text, p{  
    color:rgb(44, 17, 21)  
}
```

If you want to add a text shadow in that color use the text-shadow property, you can generate a text shadow directly with our [CSS Text Shadow Generator](#).

Here you see how black text with a 4 pixel rgb(44, 17, 21) colored shadow looks like.

```
.shadow{ text-shadow: 4px 4px 2px rgb(44, 17, 21) }
```

Border

The CSS property to change the border of an element to CIELCh 9, 14.859, 13.701 is called "border". The border property can be set on classes, ids or directly on the HTML element.

This example shows the color as border, it can be applied via the CSS property "border" or "border-color".

```
.border, #border, table{ border:4px solid rgb(44, 17, 21) }
```

If only the border color should be changed use the property border-color.

```
.border{ border-color:rgb(44, 17, 21) }
```

If you want to add a box shadow in that color use:

Here you see how a box with a 4 pixel rgb(44, 17, 21) colored shadow looks like.

```
.boxshadow{ -moz-box-shadow:4px 4px 4px  
4px rgb(44, 17, 21); -webkit-box-  
shadow:4px 4px 4px 4px rgb(44, 17, 21);  
box-shadow:4px 4px 4px 4px rgb(44, 17, 21)  
}
```

Background

The CSS property to change the background color of an element to CIELCh 9, 14.859, 13.701 is called "background". The background property can be set on classes, ids or directly on the HTML element.

```
.background, #background, body{  
background: rgb(44, 17, 21) }
```

If only the background color should be changed can be used:

```
.background{ background-color: rgb(44, 17,  
21) }
```

This example shows the color as background, it is applied via the CSS property "background".

To optimize and compress your CSS code, you can use our [online CSS compressor and optimizer](#) based on csstidy. If you want to create a linear or radial gradient as background or border, check our [CSS Gradient Generator](#).

Hey! You found this booklet interesting? Support Converting Colors with the new Membership Option!

The pro membership hides all ads, plus gives you double the colors in the color bucket, and more awesome pro features!

[Learn more, Memberships starting at \\$2.50/m!](#)

**Follow me
on Twitter!**

@ConvertingColor