

Converting Colors

CIELCh(9, 14.944, 356.355)

Have a look what the booklet for
CIELCh(9, 14.944, 356.355) contains.

CIELCh(9, 14.944, 356.355)	3
<i>Conversions</i>	4
<i>Details</i>	6
<i>Harmonies</i>	12
<i>Previews</i>	21
<i>Color Blindness Simulation</i>	24
<i>CSS Examples</i>	27

Color

CIELCh(9, 14.944, 356.355)

Conversions

Conversions Part 1

Format	Color
Hex	2B111B
RGB	43, 17, 27
RGB Percent	17%, 7%, 11%
CMY	0.8308, 0.9328, 0.8936
CMYK	0.00, 0.60, 0.37, 0.83
HSL	337°, 43%, 12%
HSV	337°, 60%, 17%
XYZ	1.4037, 1.0010, 1.1636
YIQ	25.9140, 12.2860, 8.6220

Conversions

Conversions Part 2

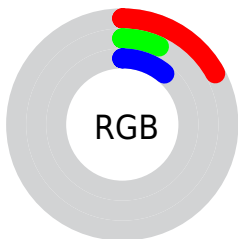
Format	Color
RYB	43, 17, 27
Decimal	2822427
CIELab	9.00, 14.91, -0.95
CIELCh	9, 14.944, 356.355
Yxy	1.0010, 0.3934, 0.2805
Android (android.graphics.Color)	4281012507 (0xFF2B111B)
YUV	25.9140, 0.5354, 14.9844
Hunter-Lab	10.0051, 7.5339, 0.1080

Details

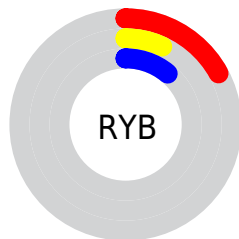
The CIELCh color **9, 14.944, 356.355** is a dark color, and the websafe version is hex **330000**. A complement of this color would be **15, 13.519, 165.132**, and the grayscale version is **9, 0.003, 296.813**.

A 20% lighter version of the original color is **29, 14.909, 357.055**, and **0, 0.000, 0.000** is the 20% darker color. If you saturate the color by 10%, you get **8, 17.250, 357.943**, and if you desaturate by 10%, it is **10, 12.495, 355.012**.

Distribution



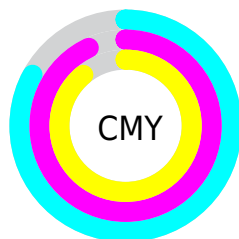
- Red (17%)
- Green (7%)
- Blue (11%)



- Red (17%)
- Yellow (7%)
- Blue (11%)



- Cyan (0%)
- Magenta (60%)
- Yellow (37%)
- Black (83%)



- Cyan (83%)
- Magenta (93%)
- Yellow (89%)

Brightness & Saturation Gradients

These gradients show how the CIELCh color 9, 14.944, 356.355 changes by changing the brightness by 10 percent. The first figure shows a shift by +10% for each color and the second figure -10%.

Similar to the brightness gradients but the following saturation gradients show a change of the CIELCh color 9, 14.944, 356.355 by changing the saturation by 10% instead.

■ 9, 14.944, 356.355

■ 9, 14.944, 356.355

■ 99, 14.944,
356.355

■ 0, 14.944, 356.355

■ 29, 14.944,
356.355

■ 39, 14.944,
356.355

■ 49, 14.944,
356.355

■ 59, 14.944,
356.355

■ 69, 14.944,
356.355

■ 79, 14.944,
356.355

89, 14.944,
356.355

9, 14.944, 356.355

9, 14.944, 356.355

8, 17.250, 357.943

10, 12.495,
355.012

7, 19.132, 359.782

12, 9.979, 353.851

6, 20.864, 0.986

13, 7.447, 352.831

5, 22.502, 1.551

15, 4.936, 351.920

16, 2.473, 351.080

18, 0.073, 348.284

19, 2.256, 169.811

21, 4.509, 169.161

Harmonies

Complementary

The Complementary color scheme is a pair of colors which are on the opposite of each other on the color wheel.



9, 14.944, 356.355



15, 13.519, 165.132

Rectangle

The Rectangle color scheme consists of four colors that form a rectangle on the color wheel.



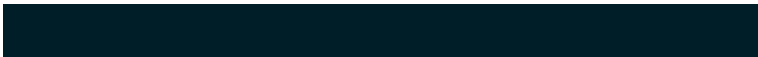
9, 14.944, 356.355



9, 14.944, 46.355



9, 14.944, 176.355



9, 14.944, 226.355

Sweetspot

The Sweet Spot groups the original color and five complimentary colors.



9, 14.943, 356.357



20, 5.456, 351.815



8, 20.426, 314.640



8, 3.695, 351.845



64, 0.008, 296.813



10, 0.003, 296.813

Same Dimension

The Same Dimension uses a secret algorithm to generate beautiful new colors.



9, 14.943, 356.357



11, 21.845, 359.031



9, 13.415, 29.708



6, 1.027, 350.946



15, 37.715, 8.535



45, 74.018, 13.723

Inverse Universe

The Inverse Universe completely reimagines the original color for something new.



9, 14.943, 356.357



11, 21.845, 359.031



15, 9.425, 208.846



6, 1.027, 350.946



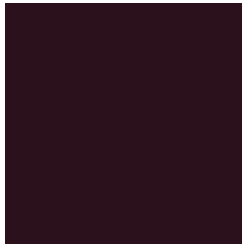
15, 37.715, 8.535



45, 74.018, 13.723

Previews

White Background



This preview shows how the CIELCh color 9, 14.944, 356.355 looks on a white background.

Color Contrast Check

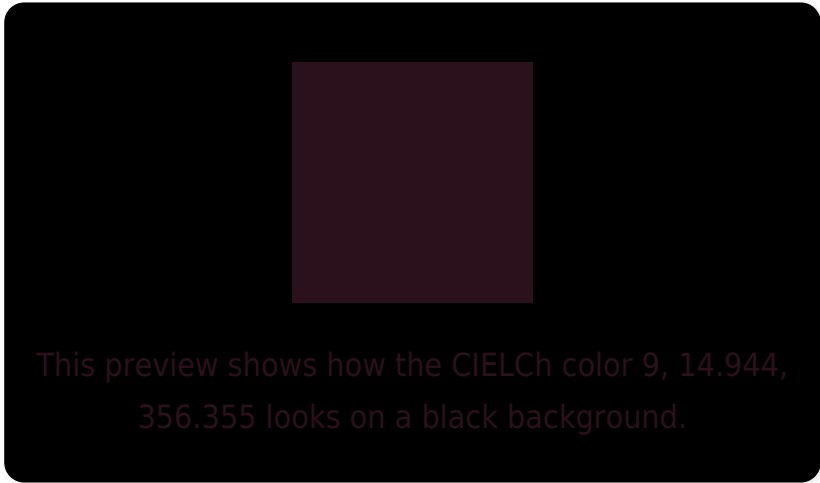
Large Text (above 18pt) WCAG AA ✓ Pass

Any Text WCAG AA ✓ Pass

Large Text (above 18pt) WCAG AAA ✓ Pass

Any Text WCAG AAA ✓ Pass

Black Background



Color Contrast Check

Large Text (above 18pt) WCAG AA × Fail

Any Text WCAG AA × Fail

Large Text (above 18pt) WCAG AAA × Fail

Any Text WCAG AAA × Fail

If you want to check with other color combinations, try the [Color Contrast Checker](#).

CIELCh 9, 14.944, 356.355

Background



This preview shows how black text looks on a background with the CIELCh color 9, 14.944, 356.355.



This preview shows how white text looks on a background with the CIELCh color 9, 14.944, 356.355.

Color Blindness Simulation

Color vision deficiency is a very complex topic, and I could not describe the different causes any better than Wikipedia does, so if you want to learn more, you should check out their [article about color blindness](#).

Dichromacy



Original Color

9, 14.944, 356.355

Protanopia

9, 5.212, 286.763

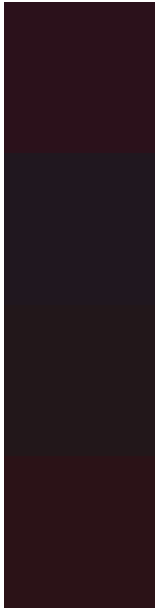
Deuteranopia

10, 1.555, 19.770



Tritanopia
9, 13.302, 20.412

Trichromacy



Original Color

9, 14.944, 356.355

Protanomaly

9, 7.449, 328.823

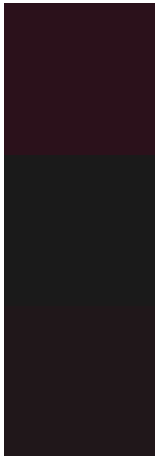
Deuteranomaly

9, 6.172, 0.466

Tritanomaly

9, 13.779, 9.487

Monochromacy



Original Color

9, 14.944, 356.355

Achromatopsia

9, 0.003, 296.813

Achromatomaly

9, 5.195, 355.788

CSS Examples

Text

The CSS property to change the color of the text to CIELCh 9, 14.944, 356.355 is called "color". The color property can be set on classes, ids or directly on the HTML element.

This example shows how text in the color `rgb(43, 17, 27)` looks like.

```
.text, #text, p{  
    color:rgb(43, 17, 27)  
}
```

If you want to add a text shadow in that color use the text-shadow property, you can generate a text shadow directly with our [CSS Text Shadow Generator](#).

Here you see how black text with a 4 pixel rgb(43, 17, 27) colored shadow looks like.

```
.shadow{ text-shadow: 4px 4px 2px rgb(43, 17, 27) }
```

Border

The CSS property to change the border of an element to CIELCh 9, 14.944, 356.355 is called "border". The border property can be set on classes, ids or directly on the HTML element.

This example shows the color as border, it can be applied via the CSS property "border" or "border-color".

```
.border, #border, table{ border:4px solid rgb(43, 17, 27) }
```

If only the border color should be changed use the property `border-color`.

```
.border{ border-color:rgb(43, 17, 27) }
```

If you want to add a box shadow in that color use:

Here you see how a box with a 4 pixel `rgb(43, 17, 27)` colored shadow looks like.

```
.boxshadow{ -moz-box-shadow:4px 4px 4px  
4px rgb(43, 17, 27); -webkit-box-  
shadow:4px 4px 4px 4px rgb(43, 17, 27);  
box-shadow:4px 4px 4px 4px rgb(43, 17, 27)  
}
```

Background

The CSS property to change the background color of an element to CIELCh 9, 14.944, 356.355 is called "background". The background property can be set on classes, ids or directly on the HTML element.

```
.background, #background, body{  
background: rgb(43, 17, 27) }
```

If only the background color should be changed can be used:

```
.background{ background-color: rgb(43, 17,  
27) }
```

This example shows the color as background, it is applied via the CSS property "background".

To optimize and compress your CSS code, you can use our [online CSS compressor and optimizer](#) based on csstidy. If you want to create a linear or radial gradient as background or border, check our [CSS Gradient Generator](#).

Hey! You found this booklet interesting? Support Converting Colors with the new Membership Option!

The pro membership hides all ads, plus gives you double the colors in the color bucket, and more awesome pro features!

[Learn more, Memberships starting at \\$2.50/m!](#)

**Follow me
on Twitter!**

@ConvertingColor