

Converting Colors

CIELCh(9, 19.172, 43.664)

Have a look what the booklet for
CIELCh(9, 19.172, 43.664) contains.

CIELCh(9, 19.374, 43.991)	3
<i>Conversions</i>	4
<i>Details</i>	6
<i>Harmonies</i>	11
<i>Previews</i>	20
<i>Color Blindness Simulation</i>	23
<i>CSS Examples</i>	26

Color

CIELCh(9, 19.374, 43.991)

Conversions

Conversions Part 1

Format	Color
Hex	2F1101
RGB	47, 17, 1
RGB Percent	18%, 7%, 0%
CMY	0.8161, 0.9338, 0.9968
CMYK	0.00, 0.64, 0.98, 0.82
HSL	21°, 97%, 9%
HSV	21°, 98%, 18%
XYZ	1.3705, 1.0010, 0.1441
YIQ	24.1460, 23.0160, 1.3840

Conversions

Conversions Part 2

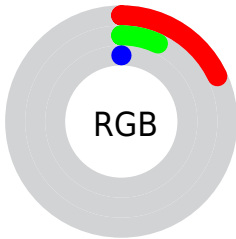
Format	Color
R_{YB}	47, 26, 1
Decimal	3084545
CIE _{Lab}	9.00, 13.94, 13.46
CIE _{LCh}	9, 19.374, 43.991
Yxy	1.0010, 0.5448, 0.3979
Android (android.graphics.Color)	4281274625 (0xFF2F1101)
YUV	24.1460, -11.4110, 20.0430
Hunter-Lab	10.0051, 6.9414, 6.1497

Details

The CIELCh color **9, 19.374, 43.991** is a dark color, and the websafe version is hex **330000**. A complement of this color would be **10, 14.450, 253.782**, and the grayscale version is **8, 0.002, 296.813**.

A 20% lighter version of the original color is **29, 19.526, 44.794**, and **0, 0.000, 0.000** is the 20% darker color. If you saturate the color by 10%, you get **9, 19.649, 43.683**, and if you desaturate by 10%, it is **10, 17.768, 46.180**.

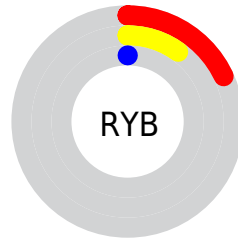
Distribution



Red (18%)

Green (7%)

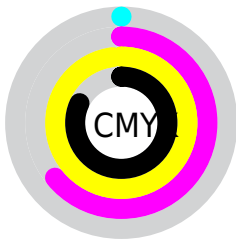
Blue (0%)



Red (18%)

Yellow (10%)

Blue (0%)

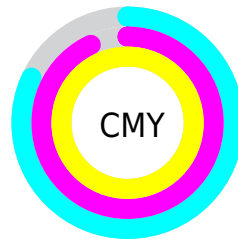


Cyan (0%)

Magenta (64%)

Yellow (98%)

Black (82%)



Cyan (82%)

Magenta (93%)

Yellow (100%)

Brightness & Saturation Gradients

These gradients show how the CIELCh color 9, 19.374, 43.991 changes by changing the brightness by 10 percent. The first figure shows a shift by +10% for each color and the second figure -10%.

Similar to the brightness gradients but the following saturation gradients show a change of the CIELCh color 9, 19.374, 43.991 by changing the saturation by 10% instead.

 9, 19.374, 43.991  9, 19.374, 43.991

 99, 19.374, 43.991  0, 19.374, 43.991

 29, 19.374, 43.991

 39, 19.374, 43.991

 49, 19.374, 43.991

 59, 19.374, 43.991

 69, 19.374, 43.991

 79, 19.374, 43.991

 89, 19.374, 43.991

 9, 19.374, 43.991  9, 19.374, 43.991

■ 9, 19.649, 43.683

■ 10, 17.768, 46.180

■ 11, 16.180, 49.054

■ 12, 14.455, 51.904

■ 13, 12.395, 53.823

■ 14, 10.017, 54.535

■ 15, 7.709, 55.099

■ 16, 5.529, 55.706

■ 17, 3.471, 56.340

■ 18, 1.528, 56.957

Harmonies

Complementary

The Complementary color scheme is a pair of colors which are on the opposite of each other on the color wheel.



9, 19.374, 43.991



10, 14.450, 253.782

Rectangle

The Rectangle color scheme consists of four colors that form a rectangle on the color wheel.



9, 19.374, 43.991



9, 19.374, 93.991



9, 19.374, 223.991



9, 19.374, 273.991

Sweetspot

The Sweet Spot groups the original color and five complimentary colors.



9, 19.373, 43.995



22, 7.143, 55.559



7, 27.596, 343.135



9, 4.658, 54.389



65, 0.008, 296.813



12, 0.003, 296.813

Same Dimension

The Same Dimension uses a secret algorithm to generate beautiful new colors.



9, 19.373, 43.995



13, 26.738, 47.311



16, 22.755, 93.664



7, 0.910, 56.270



20, 38.326, 50.047



51, 80.984, 49.641

Inverse Universe

The Inverse Universe completely reimagines the original color for something new.



10, 14.450, 253.782



15, 17.824, 257.141



4, 26.621, 291.561



7, 0.915, 239.027



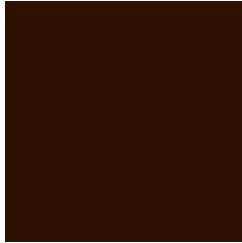
22, 23.194, 260.328



56, 47.056, 265.243

Previews

White Background



This preview shows how the CIELCh color 9, 19.374, 43.991 looks on a white background.

Color Contrast Check

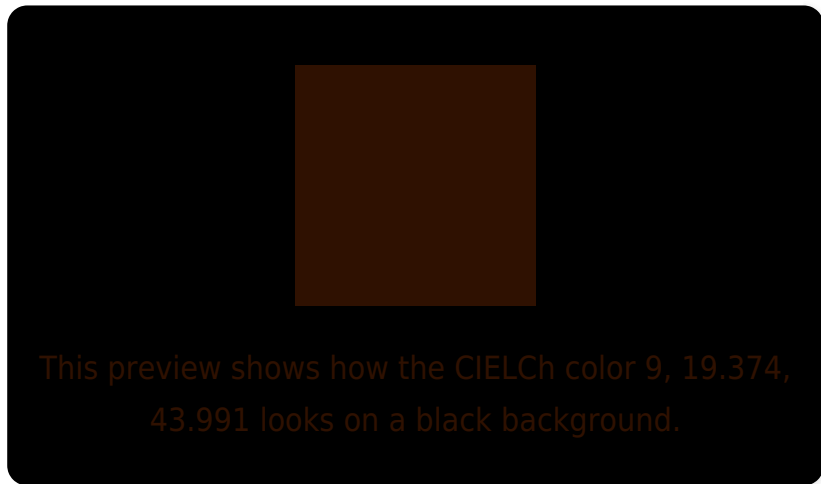
Large Text (above 18pt) WCAG AA ✓ Pass

Any Text WCAG AA ✓ Pass

Large Text (above 18pt) WCAG AAA ✓ Pass

Any Text WCAG AAA ✓ Pass

Black Background



Color Contrast Check

Large Text (above 18pt) WCAG AA × Fail

Any Text WCAG AA × Fail

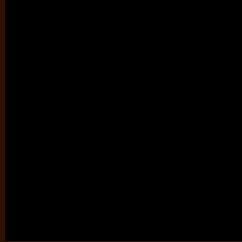
Large Text (above 18pt) WCAG AAA × Fail

Any Text WCAG AAA × Fail

If you want to check with other color combinations, try the [Color Contrast Checker](#).

CIELCh 9, 19.374, 43.991

Background



This preview shows how black text looks on a background with the CIELCh color 9, 19.374, 43.991.

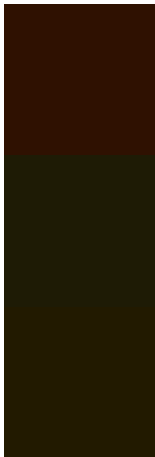


This preview shows how white text looks on a background with the CIELCh color 9, 19.374, 43.991.

Color Blindness Simulation

Color vision deficiency is a very complex topic, and I could not describe the different causes any better than Wikipedia does, so if you want to learn more, you should check out their [article about color blindness](#).

Dichromacy



Original Color

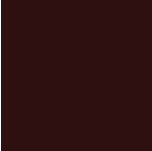
9, 19.374, 43.991

Protanopia

10, 12.426, 100.782

Deuteranopia

10, 14.405, 89.479



Tritanopia
9, 17.231, 21.924

Trichromacy



Original Color
9, 19.374, 43.991

Protanomaly
9, 12.828, 72.536

Deuteranomaly
9, 15.059, 69.505

Tritanomaly
9, 17.975, 31.051

Monochromacy



Original Color
9, 19.374, 43.991

Achromatopsia
8, 0.002, 296.813

Achromatomaly
8, 6.874, 46.621

CSS Examples

Text

The CSS property to change the color of the text to CIELCh 9, 19.374, 43.991 is called "color". The color property can be set on classes, ids or directly on the HTML element.

This example shows how text in the color `rgb(47, 17, 1)` looks like.

```
.text, #text, p{  
    color:rgb(47, 17, 1)  
}
```

If you want to add a text shadow in that color use the text-shadow property, you can generate a text shadow directly with our [CSS Text Shadow Generator](#).

Here you see how black text with a 4 pixel rgb(47, 17, 1) colored shadow looks like.

```
.shadow{ text-shadow: 4px 4px 2px rgb(47, 17, 1) }
```

Border

The CSS property to change the border of an element to CIELCh 9, 19.374, 43.991 is called "border". The border property can be set on classes, ids or directly on the HTML element.

This example shows the color as border, it can be applied via the CSS property "border" or "border-color".

```
.border, #border, table{ border:4px solid rgb(47, 17, 1) }
```

If only the border color should be changed use the property `border-color`.

```
.border{ border-color:rgb(47, 17, 1) }
```

If you want to add a box shadow in that color use:

Here you see how a box with a 4 pixel `rgb(47, 17, 1)` colored shadow looks like.

```
.boxshadow{ -moz-box-shadow:4px 4px 4px  
4px rgb(47, 17, 1); -webkit-box-shadow:4px  
4px 4px 4px rgb(47, 17, 1); box-shadow:4px  
4px 4px 4px rgb(47, 17, 1) }
```

Background

The CSS property to change the background color of an element to CIELCh 9, 19.374, 43.991 is called "background". The background property can be set on classes, ids or directly on the HTML element.

```
.background, #background, body{  
background: rgb(47, 17, 1) }
```

If only the background color should be changed can be used:

```
.background{ background-color: rgb(47, 17,  
1) }
```

This example shows the color as background, it is applied via the CSS property "background".

To optimize and compress your CSS code, you can use our [online CSS compressor and optimizer](#) based on csstidy. If you want to create a linear or radial gradient as background or border, check our [CSS Gradient Generator](#).

Hey! You found this booklet interesting? Support Converting Colors with the new Membership Option!

The pro membership hides all ads, plus gives you double the colors in the color bucket, and more awesome pro features!

[Learn more, Memberships starting at \\$2.50/m!](#)

**Follow me
on Twitter!**

@ConvertingColor