

Converting Colors

CIELCh(9, 22.189, 21.224)

Have a look what the booklet for
CIELCh(9, 22.189, 21.224) contains.

CIELCh(9, 22.281, 21.123)	3
<i>Conversions</i>	4
<i>Details</i>	6
<i>Harmonies</i>	11
<i>Previews</i>	20
<i>Color Blindness Simulation</i>	23
<i>CSS Examples</i>	26

Color

CIELCh(9, 22.281, 21.123)

Conversions

Conversions Part 1

Format	Color
Hex	340B0E
RGB	52, 11, 14
RGB Percent	20%, 4%, 5%
CMY	0.7961, 0.9569, 0.9451
CMYK	0.00, 0.79, 0.73, 0.80
HSL	356°, 65%, 12%
HSV	356°, 79%, 20%
XYZ	1.6150, 1.0010, 0.5235
YIQ	23.6010, 23.4730, 9.6250

Conversions

Conversions Part 2

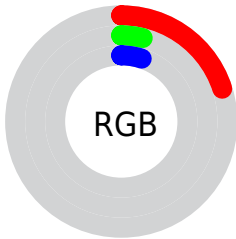
Format	Color
RYB	52, 11, 14
Decimal	3410702
CIELab	9.00, 20.78, 8.03
CIELCh	9, 22.281, 21.123
Yxy	1.0010, 0.5144, 0.3188
Android (android.graphics.Color)	4281600782 (0xFF340B0E)
YUV	23.6010, -4.7333, 24.9059
Hunter-Lab	10.0051, 11.3037, 3.9014

Details

The CIELCh color **9, 22.281, 21.123** is a dark color, and the websafe version is hex **330000**. A complement of this color would be **19, 14.882, 188.573**, and the grayscale version is **8, 0.002, 296.813**.

A 20% lighter version of the original color is **29, 22.111, 20.543**, and **0, 0.000, 0.000** is the 20% darker color. If you saturate the color by 10%, you get **8, 24.702, 20.394**, and if you desaturate by 10%, it is **10, 19.620, 20.946**.

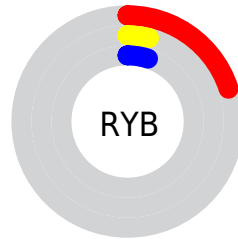
Distribution



Red (20%)

Green (4%)

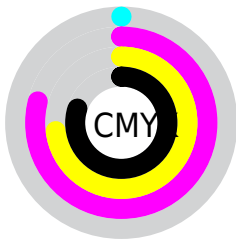
Blue (5%)



Red (20%)

Yellow (4%)

Blue (5%)

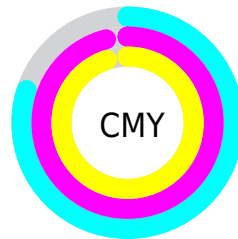


Cyan (0%)

Magenta (79%)

Yellow (73%)

Black (80%)



Cyan (80%)

Magenta (96%)

Yellow (95%)

Brightness & Saturation Gradients

These gradients show how the CIELCh color 9, 22.281, 21.123 changes by changing the brightness by 10 percent. The first figure shows a shift by +10% for each color and the second figure -10%.

Similar to the brightness gradients but the following saturation gradients show a change of the CIELCh color 9, 22.281, 21.123 by changing the saturation by 10% instead.

■ 9, 22.281, 21.123

■ 9, 22.281, 21.123

■ 99, 22.281, 21.123

■ 0, 22.281, 21.123

■ 29, 22.281, 21.123

■ 39, 22.281, 21.123

■ 49, 22.281, 21.123

■ 59, 22.281, 21.123

■ 69, 22.281, 21.123

■ 79, 22.281, 21.123

■ 89, 22.281, 21.123

■ 9, 22.281, 21.123

■ 9, 22.281, 21.123

■ 8, 24.702, 20.394

■ 10, 19.620, 20.946

■ 7, 27.153, 19.231

■ 12, 16.609, 19.687

■ 7, 27.432, 19.114

■ 13, 13.513, 18.029

■ 15, 10.493, 16.679

■ 16, 7.587, 15.569

■ 18, 4.819, 14.642

■ 20, 2.197, 13.829

■ 22, 0.278, 194.041

■ 24, 2.611, 192.813

Harmonies

Complementary

The Complementary color scheme is a pair of colors which are on the opposite of each other on the color wheel.



9, 22.281, 21.123



19, 14.882, 188.573

Rectangle

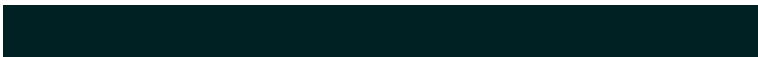
The Rectangle color scheme consists of four colors that form a rectangle on the color wheel.



9, 22.281, 21.123



9, 22.281, 71.123



9, 22.281, 201.123



9, 22.281, 251.123

Sweetspot

The Sweet Spot groups the original color and five complimentary colors.



9, 22.280, 21.126



24, 7.910, 15.224



10, 31.151, 325.004



10, 5.506, 15.332



67, 0.008, 296.813



14, 0.003, 296.813

Same Dimension

The Same Dimension uses a secret algorithm to generate beautiful new colors.



9, 22.280, 21.126



12, 33.553, 26.283



13, 18.119, 57.047



8, 1.347, 13.682



16, 43.713, 31.078



45, 89.515, 37.518

Inverse Universe

The Inverse Universe completely reimagines the original color for something new.



9, 22.280, 21.126



12, 33.553, 26.283



13, 14.125, 259.912



8, 1.347, 13.682



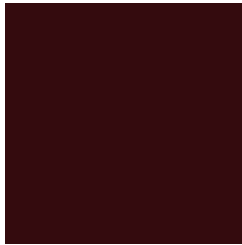
16, 43.713, 31.078



45, 89.515, 37.518

Previews

White Background



This preview shows how the CIELCh color 9, 22.281, 21.123 looks on a white background.

Color Contrast Check

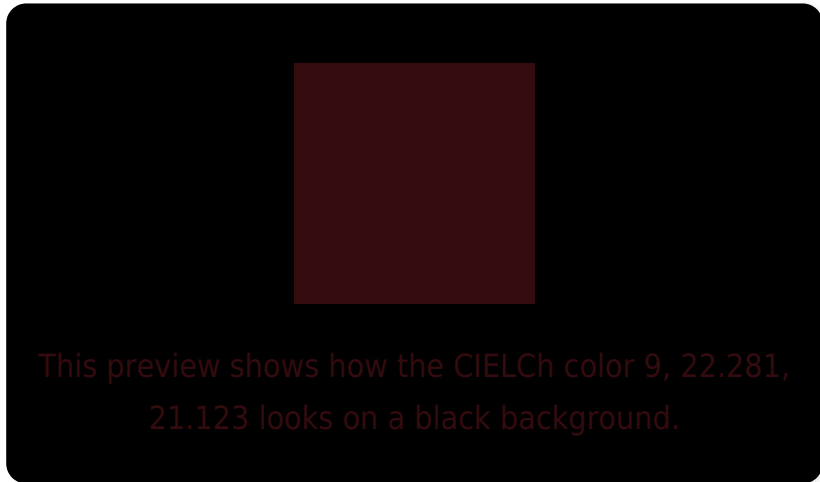
Large Text (above 18pt) WCAG AA ✓ Pass

Any Text WCAG AA ✓ Pass

Large Text (above 18pt) WCAG AAA ✓ Pass

Any Text WCAG AAA ✓ Pass

Black Background



Color Contrast Check

Large Text (above 18pt) WCAG AA × Fail

Any Text WCAG AA × Fail

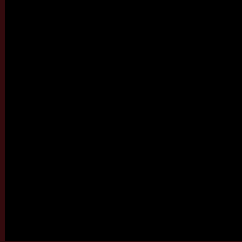
Large Text (above 18pt) WCAG AAA × Fail

Any Text WCAG AAA × Fail

If you want to check with other color combinations, try the [Color Contrast Checker](#).

CIELCh 9, 22.281, 21.123

Background



This preview shows how black text looks on a background with the CIELCh color 9, 22.281, 21.123.



This preview shows how white text looks on a background with the CIELCh color 9, 22.281, 21.123.

Color Blindness Simulation

Color vision deficiency is a very complex topic, and I could not describe the different causes any better than Wikipedia does, so if you want to learn more, you should check out their [article about color blindness](#).

Dichromacy



Original Color

9, 22.281, 21.123

Protanopia

10, 5.853, 97.722

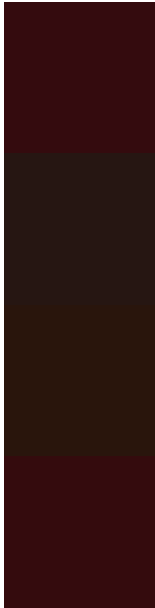
Deuteranopia

10, 10.282, 81.975



Tritanopia
9, 22.475, 23.404

Trichromacy



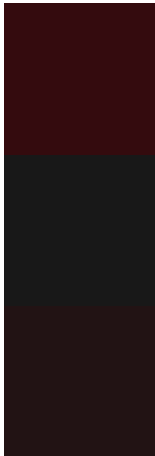
Original Color
9, 22.281, 21.123

Protanomaly
9, 9.483, 37.680

Deuteranomaly
9, 12.834, 45.160

Tritanomaly
9, 22.377, 22.298

Monochromacy



Original Color
9, 22.281, 21.123

Achromatopsia
8, 0.002, 296.813

Achromatomaly
8, 8.257, 15.987

CSS Examples

Text

The CSS property to change the color of the text to CIELCh 9, 22.281, 21.123 is called "color". The color property can be set on classes, ids or directly on the HTML element.

This example shows how text in the color `rgb(52, 11, 14)` looks like.

```
.text, #text, p{  
    color:rgb(52, 11, 14)  
}
```

If you want to add a text shadow in that color use the text-shadow property, you can generate a text shadow directly with our [CSS Text Shadow Generator](#).

Here you see how black text with a 4 pixel rgb(52, 11, 14) colored shadow looks like.

```
.shadow{ text-shadow: 4px 4px 2px rgb(52, 11, 14) }
```

Border

The CSS property to change the border of an element to CIELCh 9, 22.281, 21.123 is called "border". The border property can be set on classes, ids or directly on the HTML element.

This example shows the color as border, it can be applied via the CSS property "border" or "border-color".

```
.border, #border, table{ border:4px solid rgb(52, 11, 14) }
```

If only the border color should be changed use the property `border-color`.

```
.border{ border-color:rgb(52, 11, 14) }
```

If you want to add a box shadow in that color use:

Here you see how a box with a 4 pixel `rgb(52, 11, 14)` colored shadow looks like.

```
.boxshadow{ -moz-box-shadow:4px 4px 4px  
4px rgb(52, 11, 14); -webkit-box-  
shadow:4px 4px 4px 4px rgb(52, 11, 14);  
box-shadow:4px 4px 4px 4px rgb(52, 11, 14)  
}
```

Background

The CSS property to change the background color of an element to CIELCh 9, 22.281, 21.123 is called "background". The background property can be set on classes, ids or directly on the HTML element.

```
.background, #background, body{  
background: rgb(52, 11, 14) }
```

If only the background color should be changed can be used:

```
.background{ background-color: rgb(52, 11,  
14) }
```

This example shows the color as background, it is applied via the CSS property "background".

To optimize and compress your CSS code, you can use our [online CSS compressor and optimizer](#) based on csstidy. If you want to create a linear or radial gradient as background or border, check our [CSS Gradient Generator](#).

Hey! You found this booklet interesting? Support Converting Colors with the new Membership Option!

The pro membership hides all ads, plus gives you double the colors in the color bucket, and more awesome pro features!

[Learn more, Memberships starting at \\$2.50/m!](#)

**Follow me
on Twitter!**

@ConvertingColor