

Converting Colors

CMY(0.1318, 0.2273, 0.2682)

Have a look what the booklet for
CMY(0.1318, 0.2273, 0.2682)
contains.

CMY(0.1333, 0.2275, 0.2667)	3
<i>Conversions</i>	4
<i>Details</i>	6
<i>Harmonies</i>	12
<i>Previews</i>	24
<i>Color Blindness Simulation</i>	27
<i>CSS Examples</i>	30

Color

CMY(0.1333, 0.2275, 0.2667)

Conversions

Conversions Part 1

Format	Color
Hex	DDC5BB
RGB	221, 197, 187
RGB Percent	87%, 77%, 73%
CMY	0.1333, 0.2275, 0.2667
CMYK	0.00, 0.11, 0.15, 0.13
HSL	18°, 33%, 80%
HSV	18°, 15%, 87%
XYZ	58.7535, 58.8878, 55.2788
YIQ	203.0360, 17.5140, 1.9780

Conversions

Conversions Part 2

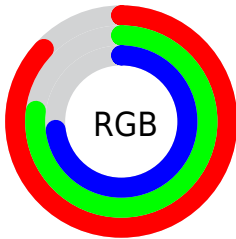
Format	Color
RYB	221, 201, 187
Decimal	14534075
CIELab	81.23, 6.83, 8.09
CIELCh	81, 10.588, 49.809
Yxy	58.8878, 0.3398, 0.3405
Android (android.graphics.Color)	4292724155 (0xFFDDC5BB)
YUV	203.0360, -7.9057, 15.7544
Hunter-Lab	76.7384, 2.3735, 11.0071

Details

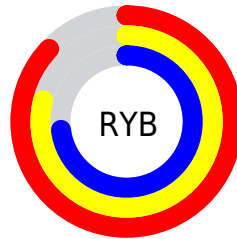
The CMY color $0.1333, 0.2275, 0.2667$ is a light color, and the websafe version is hex `CCCCCC`. A complement of this color would be $0.2667, 0.1725, 0.1333$, and the grayscale version is $0.2036, 0.2036, 0.2036$.

A 20% lighter version of the original color is $0.0000, 0.0039, 0.0471$, and $0.3490, 0.4392, 0.4745$ is the 20% darker color. If you saturate the color by 10%, you get $0.1333, 0.2887, 0.3534$, and if you desaturate by 10%, it is $0.1333, 0.1663, 0.1800$.

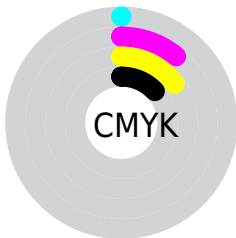
Distribution



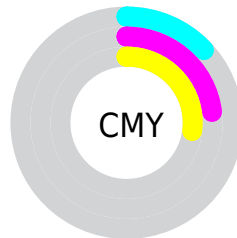
- Red (87%)
- Green (77%)
- Blue (73%)



- Red (87%)
- Yellow (79%)
- Blue (73%)



- Cyan (0%)
- Magenta (11%)
- Yellow (15%)
- Black (13%)





- Cyan (13%)
- Magenta (23%)
- Yellow (27%)

Brightness & Saturation Gradients


These gradients show how the CMY color 0.1333, 0.2275, 0.2667 changes by changing the brightness by 10 percent. The first figure shows a shift by +10% for each color and the second figure -10%.


Similar to the brightness gradients but the following saturation gradients show a change of the CMY color 0.1333, 0.2275, 0.2667 by changing the saturation by 10% instead.


 0.1333, 0.2275,
0.2667


 0.1333, 0.2275,
0.2667


0.0000, 0.0000,
0.0000


 0.2432, 0.3344,
0.3725


 0.0000, 0.0054,
0.0466

 0.3503, 0.4382,
0.4751

 0.4544, 0.5387,
0.5742

 0.5552, 0.6354,
0.6694

 0.6525, 0.7278,
0.7601

 0.7458, 0.8154,
0.8456

 0.8343, 0.8971,

0.9256

■ 0.9176, 1.0000,
1.0000

■ 1.0000, 1.0000,
1.0000

■ 0.1333, 0.2275,
0.2667

■ 0.1333, 0.2275,
0.2667

■ 0.1333, 0.2887,
0.3534

■ 0.1333, 0.1663,
0.1800

■ 0.1333, 0.3499,
0.4400

■ 0.1333, 0.1051,
0.0934

■ 0.1333, 0.4111,
0.5267

■ 0.1333, 0.0439,
0.0067

■ 0.1333, 0.4723,
0.6134

■ 0.1333, 0.0000,
0.0000

■ 0.1333, 0.5335,
0.7000

■ 0.1333, 0.5947,
0.7867

■ 0.1333, 0.6559,
0.8734

■ 0.1333, 0.7171,
0.9601

■ 0.1333, 0.7453,
1.0000

Harmonies

Analogous

The Analogous color harmony consists of three colors that are next to each other on the color wheel.



0.1237, 0.2341, 0.2336



0.1333, 0.2275, 0.2667



0.1625, 0.2161, 0.2844

Triad

The Triadic color harmony groups three colors that are evenly spaced from another and form a triangle on the color wheel.



0.1333, 0.2275, 0.2667



0.2865, 0.1862, 0.2239



0.2170, 0.2143, 0.1362

Complementary

The Complementary color scheme is a pair of colors which are on the opposite of each other on the color wheel.



0.1333, 0.2275, 0.2667



0.2667, 0.1725, 0.1333

Split Complementary

Split-complementary colors differ from the complementary color scheme. The scheme consists of three colors, the original color and two neighbors of the complement color.



0.2638, 0.2014, 0.1335



0.1333, 0.2275, 0.2667



0.3045, 0.1857, 0.1841

Square

The Square scheme is like the rectangle color scheme, but the four colors are evenly spaced on the color wheel.



0.1333, 0.2275, 0.2667



0.2494, 0.1925, 0.2597



0.2964, 0.1911, 0.1510



0.1704, 0.2262, 0.1583

Rectangle

The Rectangle color scheme consists of four colors that form a rectangle on the color wheel.



0.1333, 0.2275, 0.2667



0.1896, 0.2075, 0.2851



0.2964, 0.1911, 0.1510



0.2333, 0.2099, 0.1330

Sweetspot

The Sweet Spot groups the original color and five complimentary colors.



0.1333, 0.2275, 0.2667



0.0000, 0.0353, 0.0500



0.1333, 0.2667, 0.1711



0.5000, 0.5212, 0.5300



1.0000, 1.0000, 1.0000



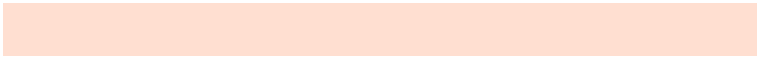
0.5000, 0.5000, 0.5000

Same Dimension

The Same Dimension uses a secret algorithm to generate beautiful new colors.



0.1333, 0.2275, 0.2667



0.0000, 0.1271, 0.1800



0.1333, 0.1622, 0.2667



0.5700, 0.6004, 0.6130



0.3200, 0.8002, 1.0000



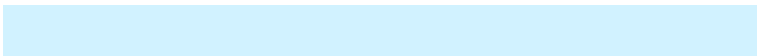
0.8200, 0.9471, 1.0000

Inverse Universe

The Inverse Universe completely reimagines the original color for something new.



0.2667, 0.1725, 0.1333



0.1800, 0.0529, 0.0000



0.2667, 0.2378, 0.1333



0.6130, 0.5826, 0.5700



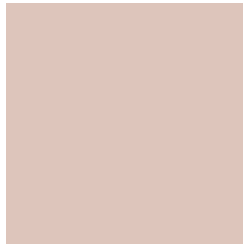
1.0000, 0.5198, 0.3200



1.0000, 0.8729, 0.8200

Previews

White Background



This preview shows how the CMY color 0.1333, 0.2275, 0.2667 looks on a white background.

Color Contrast Check

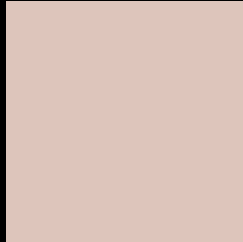
Large Text (above 18pt) WCAG AA × Fail

Any Text WCAG AA × Fail

Large Text (above 18pt) WCAG AAA × Fail

Any Text WCAG AAA × Fail

Black Background



This preview shows how the CMY color 0.1333, 0.2275, 0.2667 looks on a black background.

Color Contrast Check

Large Text (above 18pt) WCAG AA ✓ Pass

Any Text WCAG AA ✓ Pass

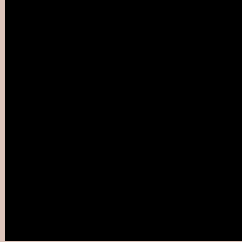
Large Text (above 18pt) WCAG AAA ✓ Pass

Any Text WCAG AAA ✓ Pass

If you want to check with other color combinations, try the [Color Contrast Checker](#).

CMY 0.1333, 0.2275, 0.2667

Background



This preview shows how black text looks on a background with the CMY color 0.1333, 0.2275, 0.2667.



This preview shows how white text looks on a background with the CMY color 0.1333, 0.2275, 0.2667.

Color Blindness Simulation

Color vision deficiency is a very complex topic, and I could not describe the different causes any better than Wikipedia does, so if you want to learn more, you should check out their [article about color blindness](#).

Dichromacy



Original Color

0.1333, 0.2275, 0.2667

Protanopia

0.1843, 0.2118, 0.2588

Deuteranopia

0.1098, 0.2353, 0.2667



Tritanopia

0.1216, 0.2392, 0.1804

Trichromacy



Original Color
0.1333, 0.2275, 0.2667

Protanomaly
0.1647, 0.2157, 0.2627

Deuteranomaly
0.1176, 0.2314, 0.2667

Tritanomaly
0.1255, 0.2353, 0.2118

Monochromacy



Original Color
0.1333, 0.2275, 0.2667

Achromatopsia
0.2039, 0.2039, 0.2039

Achromatomaly
0.1765, 0.2118, 0.2275

CSS Examples

Text

The CSS property to change the color of the text to CMY 0.1333, 0.2275, 0.2667 is called "color". The color property can be set on classes, ids or directly on the HTML element.

This example shows how text in the color `rgb(221, 197, 187)` looks like.

```
.text, #text, p{  
    color:rgb(221, 197, 187)  
}
```

If you want to add a text shadow in that color use the text-shadow property, you can generate a text shadow directly with our [CSS Text Shadow Generator](#).

Here you see how black text with a 4 pixel rgb(221, 197, 187) colored shadow looks like.

```
.shadow{ text-shadow: 4px 4px 2px rgb(221, 197, 187) }
```

Border

The CSS property to change the border of an element to CMY 0.1333, 0.2275, 0.2667 is called "border". The border property can be set on classes, ids or directly on the HTML element.

This example shows the color as border, it can be applied via the CSS property "border" or "border-color".

```
.border, #border, table{ border:4px solid rgb(221, 197, 187) }
```

If only the border color should be changed use the property `border-color`.

```
.border{ border-color:rgb(221, 197, 187) }
```

If you want to add a box shadow in that color use:

Here you see how a box with a 4 pixel `rgb(221, 197, 187)` colored shadow looks like.

```
.boxshadow{ -moz-box-shadow:4px 4px 4px  
4px rgb(221, 197, 187); -webkit-box-  
shadow:4px 4px 4px 4px rgb(221, 197, 187);  
box-shadow:4px 4px 4px 4px rgb(221, 197,  
187) }
```


Background

The CSS property to change the background color of an element to CMY 0.1333, 0.2275, 0.2667 is called "background". The background property can be set on classes, ids or directly on the HTML element.

```
.background, #background, body{  
background: rgb(221, 197, 187) }
```

If only the background color should be changed can be used:

```
.background{ background-color: rgb(221,  
197, 187) }
```

This example shows the color as background, it is applied via the CSS property "background".

To optimize and compress your CSS code, you can use our [online CSS compressor and optimizer](#) based on csstidy. If you want to create a linear or radial gradient as background or border, check our [CSS Gradient Generator](#).

Hey! You found this booklet interesting? Support Converting Colors with the new Membership Option!

The pro membership hides all ads, plus gives you double the colors in the color bucket, and more awesome pro features!

[Learn more, Memberships starting at \\$2.50/m!](#)

**Follow me
on Twitter!**

@ConvertingColor