

Converting Colors

Decimal(10055248)

Have a look what the booklet for
Decimal(10055248) contains.

Decimal(10055248)	3
<i>Conversions</i>	4
<i>Details</i>	6
<i>Harmonies</i>	11
<i>Previews</i>	23
<i>Color Blindness Simulation</i>	26
<i>CSS Examples</i>	29

Color

Decimal(10055248)

Conversions

Conversions Part 1

Format	Color
Hex	996E50
RGB	153, 110, 80
RGB Percent	60%, 43%, 31%
CMY	0.4000, 0.5686, 0.6863
CMYK	0.00, 0.28, 0.48, 0.40
HSL	25°, 31%, 46%
HSV	25°, 48%, 60%
XYZ	20.1608, 18.5034, 10.0983
YIQ	119.4370, 35.2580, -0.2140

Conversions

Conversions Part 2

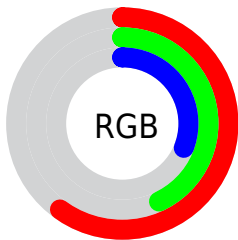
Format	Color
RYB	153, 131, 80
Decimal	10055248
CIELab	50.10, 13.27, 23.44
CIELCh	50, 26.934, 60.478
Yxy	18.5034, 0.4134, 0.3795
Android (android.graphics.Color)	4288245328 (0xFF996E50)
YUV	119.4370, -19.4424, 29.4348
Hunter-Lab	43.0155, 8.3833, 16.1919

Details

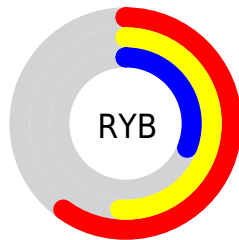
The Decimal color **10055248** is a dark color, and the websafe version is hex **996633**. A complement of this color would be **5274521**, and the grayscale version is **7895160**.

A 20% lighter version of the original color is **13738626**, and **6569507** is the 20% darker color. If you saturate the color by 10%, you get **10052929**, and if you desaturate by 10%, it is **10057567**.

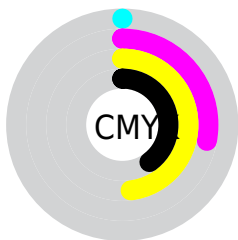
Distribution



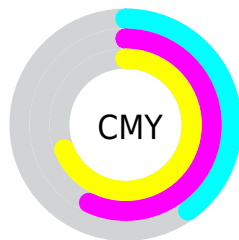
- Red (60%)
- Green (43%)
- Blue (31%)



- Red (60%)
- Yellow (51%)
- Blue (31%)



- Cyan (0%)
- Magenta (28%)
- Yellow (48%)
- Black (40%)



- Cyan (40%)
- Magenta (57%)
- Yellow (69%)


Brightness & Saturation Gradients

These gradients show how the Decimal color 10055248 changes by changing the brightness by 10 percent. The first figure shows a shift by +10% for each color and the second figure -10%.

Similar to the brightness gradients but the following saturation gradients show a change of the Decimal color 10055248 by changing the saturation by 10% instead.

 10055248  10055248

16777215  8279609

 13738626  6569507

 15646108  4859917

 16767415  3281664

 16774610  1769473

 16777199  0

 10055248  10055248

 10052929  10057567

 10050609  10059887

■ 10048290

■ 10062206

■ 10045971

■ 10064525

■ 10043652

■ 10066845

■ 10043136

■ 10069164

■ 10071483

■ 10073802

■ 10076122

Harmonies

Analogous

The Analogous color harmony consists of three colors that are next to each other on the color wheel.



10709089



10055248



8812105

Triad

The Triadic color harmony groups three colors that are evenly spaced from another and form a triangle on the color wheel.



10055248



3638391



8024479

Complementary

The Complementary color scheme is a pair of colors which are on the opposite of each other on the color wheel.



10055248



5274521

Split Complementary

Split-complementary colors differ from the complementary color scheme. The scheme consists of three colors, the original color and two neighbors of the complement color.



5798309



10055248



2261902

Square

The Square scheme is like the rectangle color scheme, but the four colors are evenly spaced on the color wheel.



1005248



5472608



3375262



9726606

Rectangle

The Rectangle color scheme consists of four colors that form a rectangle on the color wheel.



10055248



7830348



3375262



7369890

Sweetspot

The Sweet Spot groups the original color and five complimentary colors.



10055248



13088427



10047612



6510931



14935011



6513507

Same Dimension

The Same Dimension uses a secret algorithm to generate beautiful new colors.



10055248



13075542



10064464



5064773



9189888



853248

Inverse Universe

The Inverse Universe completely reimagines the original color for something new.



5274521



5675207



5265305



4540749



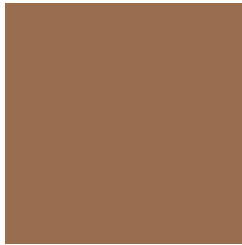
21388



2061

Previews

White Background



This preview shows how the Decimal color 10055248 looks on a white background.

Color Contrast Check

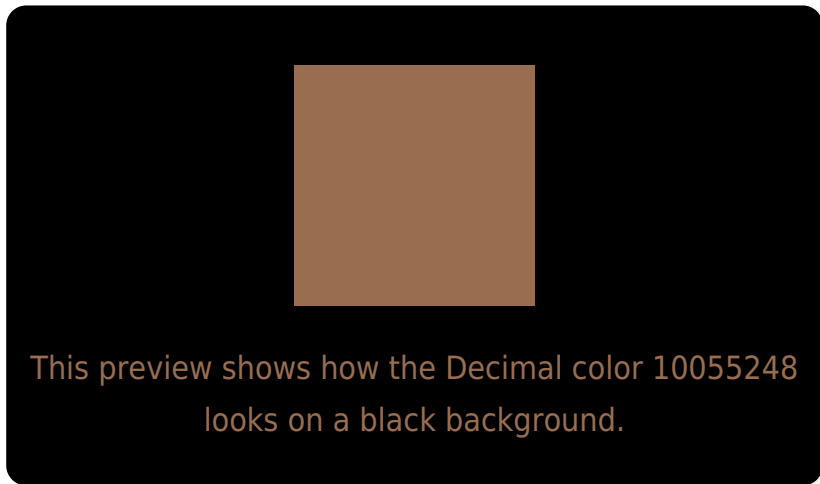
Large Text (above 18pt) WCAG AA ✓ Pass

Any Text WCAG AA ✗ Fail

Large Text (above 18pt) WCAG AAA ✗ Fail

Any Text WCAG AAA ✗ Fail

Black Background



Color Contrast Check

Large Text (above 18pt) WCAG AA ✓ Pass

Any Text WCAG AA ✓ Pass

Large Text (above 18pt) WCAG AAA ✓ Pass

Any Text WCAG AAA × Fail

If you want to check with other color combinations, try the [Color Contrast Checker](#).

Decimal 10055248 Background



This preview shows how black text looks on a background with the Decimal color 10055248.



This preview shows how white text looks on a background with the Decimal color 10055248.

Color Blindness Simulation

Color vision deficiency is a very complex topic, and I could not describe the different causes any better than Wikipedia does, so if you want to learn more, you should check out their [article about color blindness](#).


Dichromacy



Original Color
1005248

Protanopia
8484692

Deuteranopia
9400911



Tritanopia
10250866

Trichromacy



Original Color
10055248

Protanomaly
9073747

Deuteranomaly
9662799

Tritanomaly
10185574

Monochromacy



Original Color
10055248

Achromatopsia
7829367

Achromatomaly
8615017

CSS Examples

Text

The CSS property to change the color of the text to Decimal 10055248 is called "color". The color property can be set on classes, ids or directly on the HTML element.

This example shows how text in the color #996E50 looks like.

```
.text, #text, p{  
  color:#996E50  
}
```

If you want to add a text shadow in that color use the text-shadow property, you can generate a text shadow directly with our [CSS Text Shadow Generator](#).

Here you see how black text with a 4 pixel #996E50 colored shadow looks like.

```
.shadow{ text-shadow: 4px 4px 2px #996E50
}
```

Border

The CSS property to change the border of an element to Decimal 10055248 is called "border". The border property can be set on classes, ids or directly on the HTML element.

This example shows the color as border, it can be applied via the CSS property "border" or "border-color".

```
.border, #border, table{ border:4px solid
#996E50 }
```

If only the border color should be changed use the property `border-color`.

```
.border{ border-color:#996E50 }
```

If you want to add a box shadow in that color use:

Here you see how a box with a 4 pixel #996E50 colored shadow looks like.

```
.boxshadow{ -moz-box-shadow:4px 4px 4px  
4px #996E50; -webkit-box-shadow:4px 4px  
4px 4px #996E50; box-shadow:4px 4px 4px  
4px #996E50 }
```

Background

The CSS property to change the background color of an element to Decimal 10055248 is called "background". The background property can be set on classes, ids or directly on the HTML element.

```
.background, #background, body{  
background:#996E50 }
```

If only the background color should be changed can be used:

```
.background{ background-color:#996E50 }
```

This example shows the color as background, it is applied via the CSS property "background".

To optimize and compress your CSS code, you can use our [online CSS compressor and optimizer](#) based on csstidy. If you want to create a linear or radial gradient as background or border, check our [CSS Gradient Generator](#).

Hey! You found this booklet interesting? Support Converting Colors with the new Membership Option!

The pro membership hides all ads, plus gives you double the colors in the color bucket, and more awesome pro features!

[Learn more, Memberships starting at \\$2.50/m!](#)

**Follow me
on Twitter!**

@ConvertingColor