

Converting Colors

Decimal(10055498)

Have a look what the booklet for
Decimal(10055498) contains.

Decimal(10055498)	3
<i>Conversions</i>	4
<i>Details</i>	6
<i>Harmonies</i>	11
<i>Previews</i>	23
<i>Color Blindness Simulation</i>	26
<i>CSS Examples</i>	29

Color

Decimal(10055498)

Conversions

Conversions Part 1

Format	Color
Hex	996F4A
RGB	153, 111, 74
RGB Percent	60%, 44%, 29%
CMY	0.4000, 0.5647, 0.7098
CMYK	0.00, 0.27, 0.52, 0.40
HSL	28°, 35%, 45%
HSV	28°, 52%, 60%
XYZ	20.0573, 18.6356, 9.0185
YIQ	119.3400, 36.9090, -2.6030

Conversions

Conversions Part 2

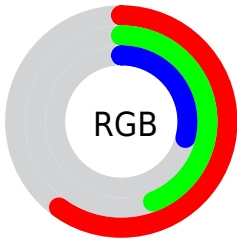
Format	Color
RYB	153, 144, 74
Decimal	10055498
CIELab	50.26, 12.08, 27.06
CIElCh	50, 29.633, 65.935
Yxy	18.6356, 0.4204, 0.3906
Android (android.graphics.Color)	4288245578 (0xFF996F4A)
YUV	119.3400, -22.3526, 29.5198
Hunter-Lab	43.1690, 7.3897, 17.8320

Details

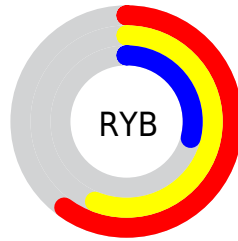
The Decimal color **10055498** is a dark color, and the websafe version is hex **996633**. A complement of this color would be **4879513**, and the grayscale version is **7895160**.

A 20% lighter version of the original color is **13738875**, and **6504221** is the 20% darker color. If you saturate the color by 10%, you get **10053435**, and if you desaturate by 10%, it is **10057561**.

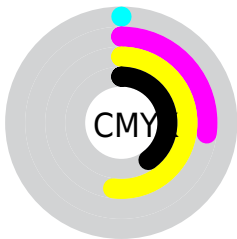
Distribution



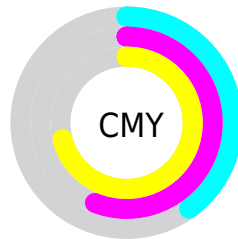
- Red (60%)
- Green (44%)
- Blue (29%)



- Red (60%)
- Yellow (56%)
- Blue (29%)



- Cyan (0%)
- Magenta (27%)
- Yellow (52%)
- Black (40%)



- Cyan (40%)
- Magenta (56%)
- Yellow (71%)

Brightness & Saturation Gradients

These gradients show how the Decimal color 10055498 changes by changing the brightness by 10 percent. The first figure shows a shift by +10% for each color and the second figure -10%.

Similar to the brightness gradients but the following saturation gradients show a change of the Decimal color 10055498 by changing the saturation by 10% instead.

 10055498

 10055498

16777215

 8279859

 13738875

 6504221

 15646357

 4860165

 16767664

 3216640

 16774860

 1638400

 16777192

 0

 10055498

 10055498

 10053435

 10057561

 10051371

 10059625

■ 10049308

■ 10061688

■ 10046989

■ 10064007

■ 10045440

■ 10066071

■ 10068134

■ 10070197

■ 10072260

■ 10074324

Harmonies

Analogous

The Analogous color harmony consists of three colors that are next to each other on the color wheel.



10905435



10055498



8616005

Triad

The Triadic color harmony groups three colors that are evenly spaced from another and form a triangle on the color wheel.



10055498



2393468



8482720

Complementary

The Complementary color scheme is a pair of colors which are on the opposite of each other on the color wheel.



10055498



4879513

Split Complementary

Split-complementary colors differ from the complementary color scheme. The scheme consists of three colors, the original color and two neighbors of the complement color.



5994665



10055498



33940

Square

The Square scheme is like the rectangle color scheme, but the four colors are evenly spaced on the color wheel.



10055498



4817762



2982053



10184589

Rectangle

The Rectangle color scheme consists of four colors that form a rectangle on the color wheel.



10055498



7503177



2982053



7697061

Sweetspot

The Sweet Spot groups the original color and five complimentary colors.



10055498



13088681



10046068



6511186



14935011



6513507

Same Dimension

The Same Dimension uses a secret algorithm to generate beautiful new colors.



10055498



13075788



10065482



5064773



9191936



853504

Inverse Universe

The Inverse Universe completely reimagines the original color for something new.



4879513



5017031



4869529



4540749



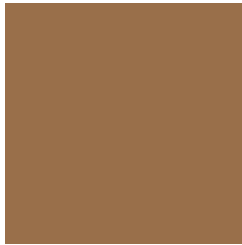
19340



1805

Previews

White Background



This preview shows how the Decimal color 10055498 looks on a white background.

Color Contrast Check

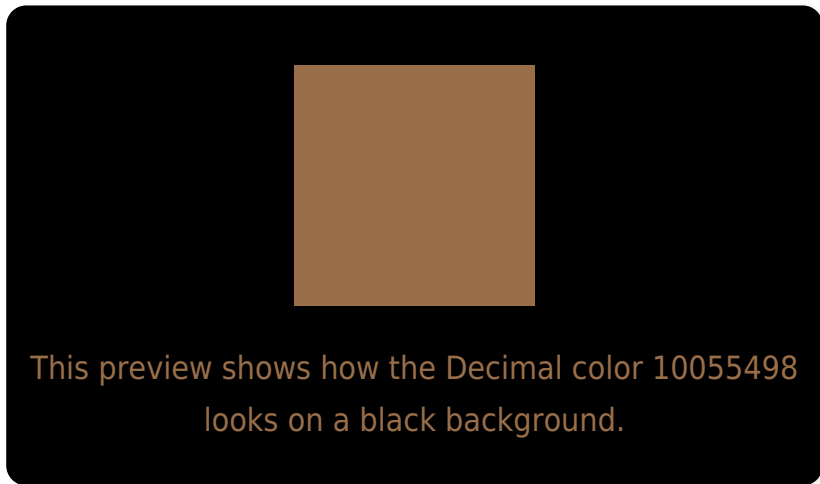
Large Text (above 18pt) WCAG AA ✓ Pass

Any Text WCAG AA ✗ Fail

Large Text (above 18pt) WCAG AAA ✗ Fail

Any Text WCAG AAA ✗ Fail

Black Background



Color Contrast Check

Large Text (above 18pt) WCAG AA ✓ Pass

Any Text WCAG AA ✓ Pass

Large Text (above 18pt) WCAG AAA ✓ Pass

Any Text WCAG AAA × Fail

If you want to check with other color combinations, try the [Color Contrast Checker](#).

Decimal 10055498 Background



This preview shows how black text looks on a background with the Decimal color 10055498.



This preview shows how white text looks on a background with the Decimal color 10055498.

Color Blindness Simulation

Color vision deficiency is a very complex topic, and I could not describe the different causes any better than Wikipedia does, so if you want to learn more, you should check out their [article about color blindness](#).


Dichromacy



Original Color
10055498

Protanopia
8550477

Deuteranopia
9531977



Tritanopia
10250866

Trichromacy



Original Color
10055498

Protanomaly
9073996

Deuteranomaly
9728329

Tritanomaly
10185827

Monochromacy



Original Color
10055498

Achromatopsia
7829367

Achromatomaly
8615015

CSS Examples

Text

The CSS property to change the color of the text to Decimal 10055498 is called "color". The color property can be set on classes, ids or directly on the HTML element.

This example shows how text in the color #996F4A looks like.

```
.text, #text, p{  
    color:#996F4A  
}
```

If you want to add a text shadow in that color use the text-shadow property, you can generate a text shadow directly with our [CSS Text Shadow Generator](#).

Here you see how black text with a 4 pixel #996F4A colored shadow looks like.

```
.shadow{ text-shadow: 4px 4px 2px #996F4A
}
```

Border

The CSS property to change the border of an element to Decimal 10055498 is called "border". The border property can be set on classes, ids or directly on the HTML element.

This example shows the color as border, it can be applied via the CSS property "border" or "border-color".

```
.border, #border, table{ border:4px solid
#996F4A }
```

If only the border color should be changed use the property `border-color`.

```
.border{ border-color:#996F4A }
```

If you want to add a box shadow in that color use:

Here you see how a box with a 4 pixel #996F4A colored shadow looks like.

```
.boxshadow{ -moz-box-shadow:4px 4px 4px  
4px #996F4A; -webkit-box-shadow:4px 4px  
4px 4px #996F4A; box-shadow:4px 4px 4px  
4px #996F4A }
```

Background

The CSS property to change the background color of an element to Decimal 10055498 is called "background". The background property can be set on classes, ids or directly on the HTML element.

```
.background, #background, body{  
background:#996F4A }
```

If only the background color should be changed can be used:

```
.background{ background-color:#996F4A }
```

This example shows the color as background, it is applied via the CSS property "background".

To optimize and compress your CSS code, you can use our [online CSS compressor and optimizer](#) based on csstidy. If you want to create a linear or radial gradient as background or border, check our [CSS Gradient Generator](#).

Hey! You found this booklet interesting? Support Converting Colors with the new Membership Option!

The pro membership hides all ads, plus gives you double the colors in the color bucket, and more awesome pro features!

[Learn more, Memberships starting at \\$2.50/m!](#)

**Follow me
on Twitter!**

@ConvertingColor