

# Converting Colors

Decimal(10059114)

Have a look what the booklet for  
Decimal(10059114) contains.

<b>Decimal(10059114)</b> .....	3
<i><b>Conversions</b></i> .....	4
<i><b>Details</b></i> .....	6
<i><b>Harmonies</b></i> .....	11
<i><b>Previews</b></i> .....	23
<i><b>Color Blindness Simulation</b></i> .....	26
<i><b>CSS Examples</b></i> .....	29

**Color**

**Decimal(10059114)**

# Conversions

## Conversions Part 1

<b>Format</b>	<b>Color</b>
Hex	997D6A
RGB	153, 125, 106
RGB Percent	60%, 49%, 42%
CMY	0.4000, 0.5098, 0.5843
CMYK	0.00, 0.18, 0.31, 0.40
HSL	24°, 19%, 51%
HSV	24°, 31%, 60%
XYZ	23.0720, 22.4801, 16.7587
YIQ	131.2060, 22.7870, 0.0270

# Conversions

## Conversions Part 2

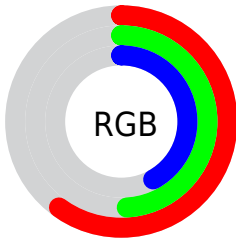
<b>Format</b>	<b>Color</b>
<b>RYB</b>	153, 138, 106
Decimal	10059114
CIELab	54.53, 7.88, 14.43
CIELCh	55, 16.439, 61.349
Yxy	22.4801, 0.3703, 0.3608
Android (android.graphics.Color)	4288249194 (0xFF997D6A)
YUV	131.2060, -12.4266, 19.1133
Hunter-Lab	47.4132, 3.8877, 12.2325

# Details

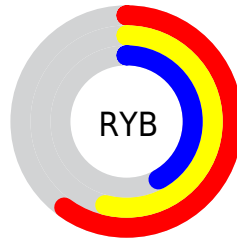
The Decimal color **10059114** is a dark color, and the websafe version is hex **996666**. A complement of this color would be **6981273**, and the grayscale version is **8618883**.

A 20% lighter version of the original color is **13677213**, and **6638651** is the 20% darker color. If you saturate the color by 10%, you get **10056795**, and if you desaturate by 10%, it is **10061433**.

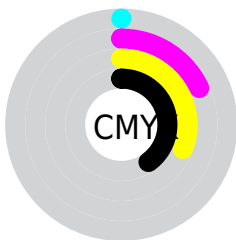
# Distribution



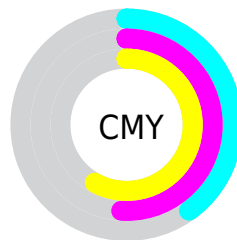
- Red (60%)
- Green (49%)
- Blue (42%)



- Red (60%)
- Yellow (54%)
- Blue (42%)



- Cyan (0%)
- Magenta (18%)
- Yellow (31%)
- Black (40%)



- Cyan (40%)
- Magenta (51%)
- Yellow (58%)

# Brightness & Saturation Gradients

These gradients show how the Decimal color 10059114 changes by changing the brightness by 10 percent. The first figure shows a shift by +10% for each color and the second figure -10%.

Similar to the brightness gradients but the following saturation gradients show a change of the Decimal color 10059114 by changing the saturation by 10% instead.





10059114



10059114

16777215



8348754



13677213



6638651



15584696



4994341



16771540



3481616



16777200



2034176



0



10059114



10059114



10056795



10061433



10054475



10063753

 10052156

 10066072

 10049837

 10068391

 10047262

 10070967

 10044942

 10073286

 10042880

 10075605

 10077924

 10080244

# Harmonies

## Analogous

The Analogous color harmony consists of three colors that are next to each other on the color wheel.



10516852



10059114



9273958

# Triad

The Triadic color harmony groups three colors that are evenly spaced from another and form a triangle on the color wheel.



10059114



6327171



8814491

# Complementary

The Complementary color scheme is a pair of colors which are on the opposite of each other on the color wheel.



10059114



6981273

# Split Complementary

Split-complementary colors differ from the complementary color scheme. The scheme consists of three colors, the original color and two neighbors of the complement color.



7570335



10059114



5999249

# Square

The Square scheme is like the rectangle color scheme, but the four colors are evenly spaced on the color wheel.



10059114



7178612



6523035



9861776

# Rectangle

The Rectangle color scheme consists of four colors that form a rectangle on the color wheel.



10059114



8619368



6523035



8421533



# Sweetspot

The Sweet Spot groups the original color and five complimentary colors.



10059114



13089973



10054278



6511961



14935011



6513507



# Same Dimension

The Same Dimension uses a secret algorithm to generate beautiful new colors.



10059114



13081469



10065002



5064773



9189632



853248



# Inverse Universe

The Inverse Universe completely reimagines the original color for something new.



6981273



8235463



6975385



4540749



21644

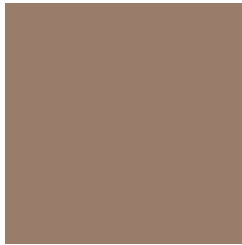


2061



# Previews

## White Background



This preview shows how the Decimal color 10059114 looks on a white background.

## Color Contrast Check

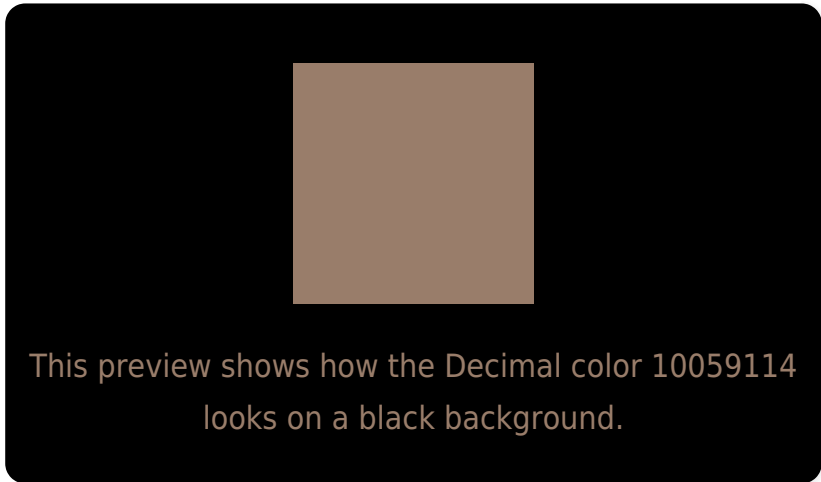
Large Text (above 18pt) WCAG AA ✓ Pass

Any Text WCAG AA × Fail

Large Text (above 18pt) WCAG AAA × Fail

Any Text WCAG AAA × Fail

# Black Background



## Color Contrast Check

Large Text (above 18pt) WCAG AA ✓ Pass

Any Text WCAG AA ✓ Pass

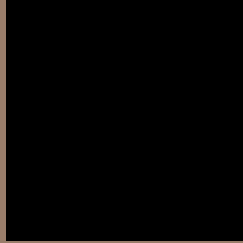
Large Text (above 18pt) WCAG AAA ✓ Pass

Any Text WCAG AAA × Fail

If you want to check with other color combinations, try the [Color Contrast Checker](#).



## Decimal 10059114 Background



This preview shows how black text looks on a background with the Decimal color 10059114.



This preview shows how white text looks on a background with the Decimal color 10059114.

# Color Blindness Simulation

Color vision deficiency is a very complex topic, and I could not describe the different causes any better than Wikipedia does, so if you want to learn more, you should check out their [article about color blindness](#).

## Dichromacy



**Original Color**  
10059114

**Protanopia**  
9077357

**Deuteranopia**  
9993834



**Tritanopia**  
10254723

# Trichromacy



**Original Color**  
10059114

**Protanomaly**  
9404524

**Deuteranomaly**  
9993834

**Tritanomaly**  
10189434

# Monochromacy



**Original Color**  
10059114

**Achromatopsia**  
8618883

**Achromatomaly**  
9142650

# CSS Examples

## Text

The CSS property to change the color of the text to Decimal 10059114 is called "color". The color property can be set on classes, ids or directly on the HTML element.

This example shows how text in the color #997D6A looks like.

```
.text, #text, p{  
    color:#997D6A  
}
```

If you want to add a text shadow in that color use the text-shadow property, you can generate a text shadow directly with our [CSS Text Shadow Generator](#).

Here you see how black text with a 4 pixel #997D6A colored shadow looks like.

```
.shadow{ text-shadow: 4px 4px 2px #997D6A
}
```

## Border

The CSS property to change the border of an element to Decimal 10059114 is called "border". The border property can be set on classes, ids or directly on the HTML element.

This example shows the color as border, it can be applied via the CSS property "border" or "border-color".

```
.border, #border, table{ border:4px solid
#997D6A }
```

If only the border color should be changed use the property `border-color`.

```
.border{ border-color:#997D6A }
```

If you want to add a box shadow in that color use:

Here you see how a box with a 4 pixel #997D6A colored shadow looks like.

```
.boxshadow{ -moz-box-shadow:4px 4px 4px  
4px #997D6A; -webkit-box-shadow:4px 4px  
4px 4px #997D6A; box-shadow:4px 4px 4px  
4px #997D6A }
```

# Background

The CSS property to change the background color of an element to Decimal 10059114 is called "background". The background property can be set on classes, ids or directly on the HTML element.

```
.background, #background, body{  
background:#997D6A }
```

If only the background color should be changed can be used:

```
.background{ background-color:#997D6A }
```

This example shows the color as background, it is applied via the CSS property "background".

To optimize and compress your CSS code, you can use our [online CSS compressor and optimizer](#) based on csstidy. If you want to create a linear or radial gradient as background or border, check our [CSS Gradient Generator](#).



Hey! You found this booklet interesting? Support Converting Colors with the new Membership Option!

The pro membership hides all ads, plus gives you double the colors in the color bucket, and more awesome pro features!

**[Learn more, Memberships starting at \\$2.50/m!](#)**

**Follow me  
on Twitter!**

@ConvertingColor