

Converting Colors

Decimal(10251348)

Have a look what the booklet for
Decimal(10251348) contains.

Decimal(10251348)	3
<i>Conversions</i>	4
<i>Details</i>	6
<i>Harmonies</i>	11
<i>Previews</i>	23
<i>Color Blindness Simulation</i>	26
<i>CSS Examples</i>	29

Color

Decimal(10251348)

Conversions

Conversions Part 1

Format	Color
Hex	9C6C54
RGB	156, 108, 84
RGB Percent	61%, 42%, 33%
CMY	0.3882, 0.5765, 0.6706
CMYK	0.00, 0.31, 0.46, 0.39
HSL	20°, 30%, 47%
HSV	20°, 46%, 61%
XYZ	20.6731, 18.4331, 10.8559
YIQ	119.6160, 36.3120, 2.7120

Conversions

Conversions Part 2

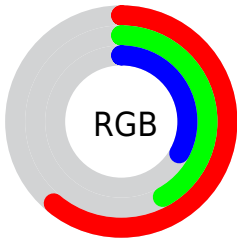
Format	Color
R _Y B	156, 120, 84
Decimal	10251348
CIE Lab	50.02, 16.14, 21.08
CIE LCh	50, 26.550, 52.569
Yxy	18.4331, 0.4138, 0.3689
Android (android.graphics.Color)	4288441428 (0xFF9C6C54)
YUV	119.6160, -17.5587, 31.9088
Hunter-Lab	42.9338, 10.8155, 15.0621

Details

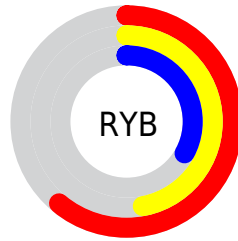
The Decimal color **10251348** is a dark color, and the websafe version is hex **996666**. A complement of this color would be **5538972**, and the grayscale version is **7895160**.

A 20% lighter version of the original color is **13934726**, and **6700071** is the 20% darker color. If you saturate the color by 10%, you get **10248772**, and if you desaturate by 10%, it is **10253924**.

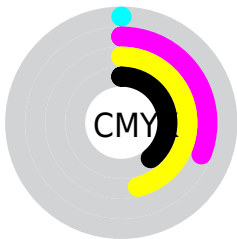
Distribution



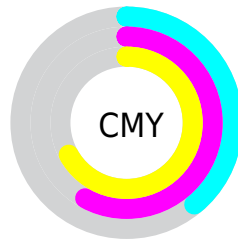
- Red (61%)
- Green (42%)
- Blue (33%)



- Red (61%)
- Yellow (47%)
- Blue (33%)



- Cyan (0%)
- Magenta (31%)
- Yellow (46%)
- Black (39%)



- Cyan (39%)
- Magenta (58%)
- Yellow (67%)

Brightness & Saturation Gradients

These gradients show how the Decimal color 10251348 changes by changing the brightness by 10 percent. The first figure shows a shift by +10% for each color and the second figure -10%.

Similar to the brightness gradients but the following saturation gradients show a change of the Decimal color 10251348 by changing the saturation by 10% instead.

 10251348

 10251348

16777215

 8475709

 13934726

 6700071

 15842208

 5056018

 16766651

 3412224

 16774103

 1966081

 16777203

 0

 10251348

 10251348

 10248772

 10253924

 10245941

 10256755

■ 10243365

■ 10259331

■ 10240534

■ 10262162

■ 10237958

■ 10264738

■ 10236928

■ 10267314

■ 10270145

■ 10272721

■ 10275552

Harmonies

Analogous

The Analogous color harmony consists of three colors that are next to each other on the color wheel.



10708839



10251348



9139274

Triad

The Triadic color harmony groups three colors that are evenly spaced from another and form a triangle on the color wheel.



10251348



4162416



7500705

Complementary

The Complementary color scheme is a pair of colors which are on the opposite of each other on the color wheel.



10251348



5538972

Split Complementary

Split-complementary colors differ from the complementary color scheme. The scheme consists of three colors, the original color and two neighbors of the complement color.



5208995



10251348



2589575

Square

The Square scheme is like the rectangle color scheme, but the four colors are evenly spaced on the color wheel.



10251348



5996635



2982042



9333651

Rectangle

The Rectangle color scheme consists of four colors that form a rectangle on the color wheel.



10251348



8223050



2982042



6780579

Sweetspot

The Sweet Spot groups the original color and five complimentary colors.



10251348



13416879



10245252



6707797



15132390



6710886

Same Dimension

The Same Dimension uses a secret algorithm to generate beautiful new colors.



10251348



13402460



10260564



5196359



9383936



984320

Inverse Universe

The Inverse Universe completely reimagines the original color for something new.



5538972



6072268



5529756



4672591



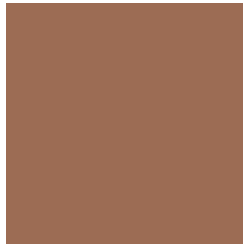
24463



2575

Previews

White Background



This preview shows how the Decimal color 10251348 looks on a white background.

Color Contrast Check

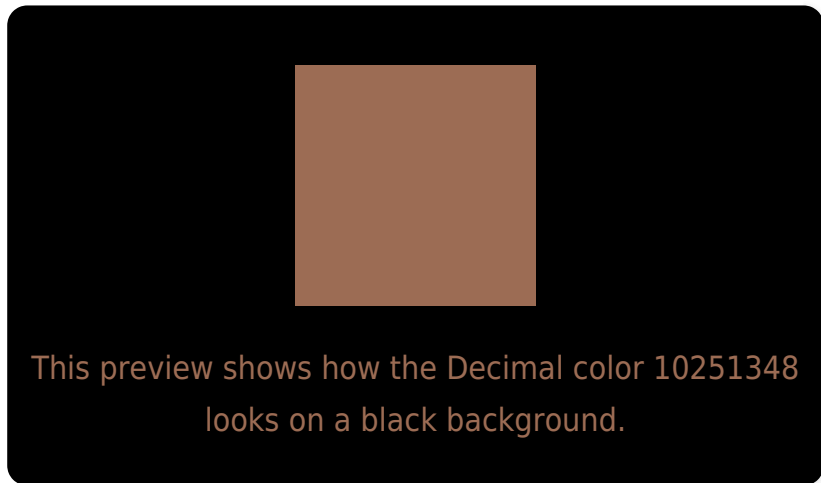
Large Text (above 18pt) WCAG AA ✓ Pass

Any Text WCAG AA ✗ Fail

Large Text (above 18pt) WCAG AAA ✗ Fail

Any Text WCAG AAA ✗ Fail

Black Background



Color Contrast Check

Large Text (above 18pt) WCAG AA ✓ Pass

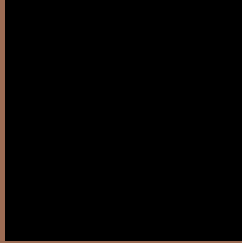
Any Text WCAG AA ✓ Pass

Large Text (above 18pt) WCAG AAA ✓ Pass

Any Text WCAG AAA × Fail

If you want to check with other color combinations, try the [Color Contrast Checker](#).

Decimal 10251348 Background



This preview shows how black text looks on a background with the Decimal color 10251348.



This preview shows how white text looks on a background with the Decimal color 10251348.

Color Blindness Simulation

Color vision deficiency is a very complex topic, and I could not describe the different causes any better than Wikipedia does, so if you want to learn more, you should check out their [article about color blindness](#).


Dichromacy



Original Color
10251348

Protanopia
8419161

Deuteranopia
9335379



Tritanopia
10381424

Trichromacy



Original Color
10251348

Protanomaly
9073495

Deuteranomaly
9662547

Tritanomaly
10316134

Monochromacy



Original Color
10251348

Achromatopsia
7895160

Achromatomaly
8746091

CSS Examples

Text

The CSS property to change the color of the text to Decimal 10251348 is called "color". The color property can be set on classes, ids or directly on the HTML element.

This example shows how text in the color #9C6C54 looks like.

```
.text, #text, p{  
    color:#9C6C54  
}
```

If you want to add a text shadow in that color use the text-shadow property, you can generate a text shadow directly with our [CSS Text Shadow Generator](#).

Here you see how black text with a 4 pixel #9C6C54 colored shadow looks like.

```
.shadow{ text-shadow: 4px 4px 2px #9C6C54
}
```

Border

The CSS property to change the border of an element to Decimal 10251348 is called "border". The border property can be set on classes, ids or directly on the HTML element.

This example shows the color as border, it can be applied via the CSS property "border" or "border-color".

```
.border, #border, table{ border:4px solid
#9C6C54 }
```

If only the border color should be changed use the property `border-color`.

```
.border{ border-color:#9C6C54 }
```

If you want to add a box shadow in that color use:

Here you see how a box with a 4 pixel #9C6C54 colored shadow looks like.

```
.boxshadow{ -moz-box-shadow:4px 4px 4px  
4px #9C6C54; -webkit-box-shadow:4px 4px  
4px 4px #9C6C54; box-shadow:4px 4px 4px  
4px #9C6C54 }
```

Background

The CSS property to change the background color of an element to Decimal 10251348 is called "background". The background property can be set on classes, ids or directly on the HTML element.

```
.background, #background, body{  
background:#9C6C54 }
```

If only the background color should be changed can be used:

```
.background{ background-color:#9C6C54 }
```

This example shows the color as background, it is applied via the CSS property "background".

To optimize and compress your CSS code, you can use our [online CSS compressor and optimizer](#) based on csstidy. If you want to create a linear or radial gradient as background or border, check our [CSS Gradient Generator](#).

Hey! You found this booklet interesting? Support Converting Colors with the new Membership Option!

The pro membership hides all ads, plus gives you double the colors in the color bucket, and more awesome pro features!

[Learn more, Memberships starting at \\$2.50/m!](#)

**Follow me
on Twitter!**

@ConvertingColor