

Converting Colors

Decimal(10253913)

Have a look what the booklet for
Decimal(10253913) contains.

Decimal(10253913)	3
<i>Conversions</i>	4
<i>Details</i>	6
<i>Harmonies</i>	11
<i>Previews</i>	23
<i>Color Blindness Simulation</i>	26
<i>CSS Examples</i>	29

Color

Decimal(10253913)

Conversions

Conversions Part 1

Format	Color
Hex	9C7659
RGB	156, 118, 89
RGB Percent	61%, 46%, 35%
CMY	0.3882, 0.5373, 0.6510
CMYK	0.00, 0.24, 0.43, 0.39
HSL	26°, 27%, 48%
HSV	26°, 43%, 61%
XYZ	21.9919, 20.7461, 12.2965
YIQ	126.0560, 31.9570, -0.9630

Conversions

Conversions Part 2

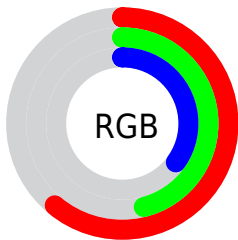
Format	Color
RYB	156, 140, 89
Decimal	10253913
CIELab	52.67, 10.96, 21.72
CIELCh	53, 24.335, 63.221
Yxy	20.7461, 0.3996, 0.3770
Android (android.graphics.Color)	4288443993 (0xFF9C7659)
YUV	126.0560, -18.2686, 26.2609
Hunter-Lab	45.5478, 6.4766, 15.8771

Details

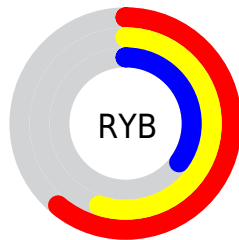
The Decimal color **10253913** is a dark color, and the websafe version is hex **996633**. A complement of this color would be **5865372**, and the grayscale version is **8289918**.

A 20% lighter version of the original color is **13937291**, and **6768171** is the 20% darker color. If you saturate the color by 10%, you get **10251593**, and if you desaturate by 10%, it is **10256233**.

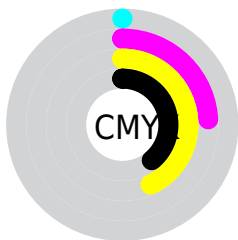
Distribution



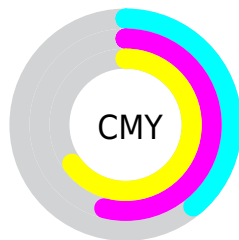
- Red (61%)
- Green (46%)
- Blue (35%)



- Red (61%)
- Yellow (55%)
- Blue (35%)



- Cyan (0%)
- Magenta (24%)
- Yellow (43%)
- Black (39%)



- Cyan (39%)
- Magenta (54%)
- Yellow (65%)

Brightness & Saturation Gradients

These gradients show how the Decimal color 10253913 changes by changing the brightness by 10 percent. The first figure shows a shift by +10% for each color and the second figure -10%.

Similar to the brightness gradients but the following saturation gradients show a change of the Decimal color 10253913 by changing the saturation by 10% instead.

 10253913  10253913


16777215  8478017

 13937291  6768171

 15844774  5058326

 16769473  3545600

 16776925  1966336

 16777209  0

 10253913  10253913

 10251593  10256233

 10249274  10258552

■ 10246954

■ 10260872

■ 10244891

■ 10262935

■ 10242571

■ 10265255

■ 10241024

■ 10267575

■ 10269894

■ 10272214

■ 10274533

Harmonies

Analogous

The Analogous color harmony consists of three colors that are next to each other on the color wheel.



10907752



10253913



9076052

Triad

The Triadic color harmony groups three colors that are evenly spaced from another and form a triangle on the color wheel.



10253913



4557183



8681633

Complementary

The Complementary color scheme is a pair of colors which are on the opposite of each other on the color wheel.



10253913



5865372

Split Complementary

Split-complementary colors differ from the complementary color scheme. The scheme consists of three colors, the original color and two neighbors of the complement color.



6717351



10253913



3836052

Square

The Square scheme is like the rectangle color scheme, but the four colors are evenly spaced on the color wheel.



10253913



5998442



4752802



10121617

Rectangle

The Rectangle color scheme consists of four colors that form a rectangle on the color wheel.



10253913



8159575



4752802



8026788

Sweetspot

The Sweet Spot groups the original color and five complimentary colors.



10253913



13417905



10246528



6708566



15132390



6710886

Same Dimension

The Same Dimension uses a secret algorithm to generate beautiful new colors.



10253913



13406306



10262105



5196615



9387520



984832

Inverse Universe

The Inverse Universe completely reimagines the original color for something new.



5865372



6463180



5857180



4672591



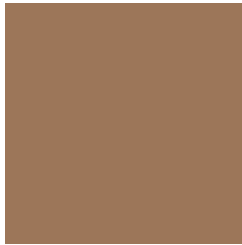
20879



2319

Previews

White Background



This preview shows how the Decimal color 10253913 looks on a white background.

Color Contrast Check

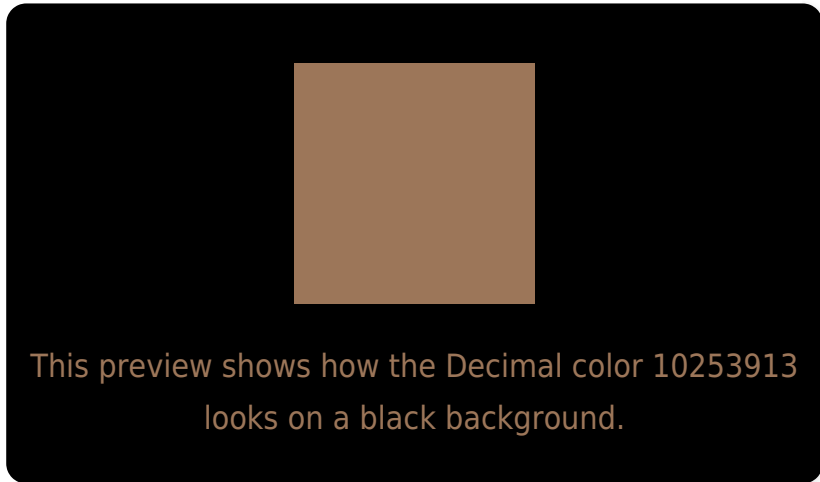
Large Text (above 18pt) WCAG AA ✓ Pass

Any Text WCAG AA × Fail

Large Text (above 18pt) WCAG AAA × Fail

Any Text WCAG AAA × Fail

Black Background



Color Contrast Check

Large Text (above 18pt) WCAG AA ✓ Pass

Any Text WCAG AA ✓ Pass

Large Text (above 18pt) WCAG AAA ✓ Pass

Any Text WCAG AAA × Fail

If you want to check with other color combinations, try the [Color Contrast Checker](#).

Decimal 10253913 Background



This preview shows how black text looks on a background with the Decimal color 10253913.



This preview shows how white text looks on a background with the Decimal color 10253913.

Color Blindness Simulation

Color vision deficiency is a very complex topic, and I could not describe the different causes any better than Wikipedia does, so if you want to learn more, you should check out their [article about color blindness](#).


Dichromacy



Original Color
10253913

Protanopia
8879708

Deuteranopia
9861464



Tritanopia
10449530

Trichromacy



Original Color
10253913

Protanomaly
9403227

Deuteranomaly
9992280

Tritanomaly
10384238

Monochromacy



Original Color
10253913

Achromatopsia
8289918

Achromatomaly
9010033

CSS Examples

Text

The CSS property to change the color of the text to Decimal 10253913 is called "color". The color property can be set on classes, ids or directly on the HTML element.

This example shows how text in the color #9C7659 looks like.

```
.text, #text, p{  
  color:#9C7659  
}
```

If you want to add a text shadow in that color use the text-shadow property, you can generate a text shadow directly with our [CSS Text Shadow Generator](#).

Here you see how black text with a 4 pixel #9C7659 colored shadow looks like.

```
.shadow{ text-shadow: 4px 4px 2px #9C7659
}
```

Border

The CSS property to change the border of an element to Decimal 10253913 is called "border". The border property can be set on classes, ids or directly on the HTML element.

This example shows the color as border, it can be applied via the CSS property "border" or "border-color".

```
.border, #border, table{ border:4px solid
#9C7659 }
```

If only the border color should be changed use the property `border-color`.

```
.border{ border-color:#9C7659 }
```

If you want to add a box shadow in that color use:

Here you see how a box with a 4 pixel #9C7659 colored shadow looks like.

```
.boxshadow{ -moz-box-shadow:4px 4px 4px  
4px #9C7659; -webkit-box-shadow:4px 4px  
4px 4px #9C7659; box-shadow:4px 4px 4px  
4px #9C7659 }
```

Background

The CSS property to change the background color of an element to Decimal 10253913 is called "background". The background property can be set on classes, ids or directly on the HTML element.

```
.background, #background, body{  
background:#9C7659 }
```

If only the background color should be changed can be used:

```
.background{ background-color:#9C7659 }
```

This example shows the color as background, it is applied via the CSS property "background".

To optimize and compress your CSS code, you can use our [online CSS compressor and optimizer](#) based on csstidy. If you want to create a linear or radial gradient as background or border, check our [CSS Gradient Generator](#).

Hey! You found this booklet interesting? Support Converting Colors with the new Membership Option!

The pro membership hides all ads, plus gives you double the colors in the color bucket, and more awesome pro features!

[Learn more, Memberships starting at \\$2.50/m!](#)

**Follow me
on Twitter!**

@ConvertingColor