

Converting Colors

Decimal(10383955)

Have a look what the booklet for
Decimal(10383955) contains.

| | |
|--|----|
| Decimal(10383955) | 3 |
| <i>Conversions</i> | 4 |
| <i>Details</i> | 6 |
| <i>Harmonies</i> | 11 |
| <i>Previews</i> | 23 |
| <i>Color Blindness Simulation</i> | 26 |
| <i>CSS Examples</i> | 29 |

Color

Decimal(10383955)

Conversions

Conversions Part 1

| Format | Color |
|---------------|----------------------------|
| Hex | 9E7253 |
| RGB | 158, 114, 83 |
| RGB Percent | 62%, 45%, 33% |
| CMY | 0.3804, 0.5529, 0.6745 |
| CMYK | 0.00, 0.28, 0.47, 0.38 |
| HSL | 25°, 31%, 47% |
| HSV | 25°, 47%, 62% |
| XYZ | 21.6792, 19.9283, 10.8875 |
| YIQ | 123.6220, 36.1750, -0.3130 |

Conversions

Conversions Part 2

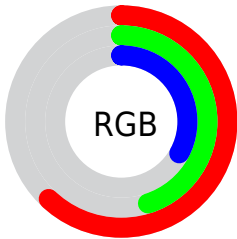
| Format | Color |
|-------------------------------------|--------------------------------|
| RYB | 158, 136, 83 |
| Decimal | 10383955 |
| CIELab | 51.76, 13.44, 23.99 |
| CIELCh | 52, 27.501, 60.735 |
| Yxy | 19.9283, 0.4130, 0.3796 |
| Android (android.graphics.Color) | 4288574035 (0xFF9E7253) |
| YUV | 123.6220, -20.0266, 30.1495 |
| Hunter-Lab | 44.6411, 8.5637, 16.7885 |

Details

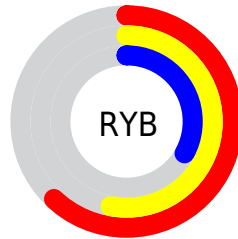
The Decimal color **10383955** is a dark color, and the websafe version is hex **996633**. A complement of this color would be **5472158**, and the grayscale version is **8158332**.

A 20% lighter version of the original color is **14067333**, and **6832677** is the 20% darker color. If you saturate the color by 10%, you get **10381635**, and if you desaturate by 10%, it is **10386275**.

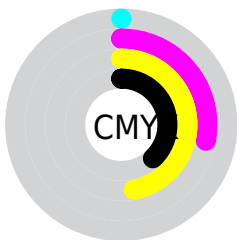
Distribution



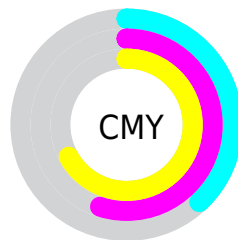
- Red (62%)
- Green (45%)
- Blue (33%)



- Red (62%)
- Yellow (53%)
- Blue (33%)



- Cyan (0%)
- Magenta (28%)
- Yellow (47%)
- Black (38%)



- Cyan (38%)
- Magenta (55%)
- Yellow (67%)

Brightness & Saturation Gradients

These gradients show how the Decimal color 10383955 changes by changing the brightness by 10 percent. The first figure shows a shift by +10% for each color and the second figure -10%.

Similar to the brightness gradients but the following saturation gradients show a change of the Decimal color 10383955 by changing the saturation by 10% instead.

 10383955  10383955

16777215  8608060

 14067333  6832677

 16040351  5123088

 16768442  3544832

 16775894  2031616

 16777202  0

 10383955  10383955

 10381635  10386275

 10379059  10388851

■ 10376740

■ 10391170

■ 10374420

■ 10393490

■ 10372100

■ 10395810

■ 10371328

■ 10398386

■ 10400706

■ 10403025

■ 10405345

Harmonies

Analogous

The Analogous color harmony consists of three colors that are next to each other on the color wheel.



11103077



10383955



9140812

Triad

The Triadic color harmony groups three colors that are evenly spaced from another and form a triangle on the color wheel.



10383955



3770491



8353188

Complementary

The Complementary color scheme is a pair of colors which are on the opposite of each other on the color wheel.



10383955



5472158

Split Complementary

Split-complementary colors differ from the complementary color scheme. The scheme consists of three colors, the original color and two neighbors of the complement color.



5995946



10383955



2394003

Square

The Square scheme is like the rectangle color scheme, but the four colors are evenly spaced on the color wheel.



10383955



5670500



3572900



10120595

Rectangle

The Rectangle color scheme consists of four colors that form a rectangle on the color wheel.



10383955



8093519



3572900



7633063

Sweetspot

The Sweet Spot groups the original color and five complimentary colors.



10383955



13614770



10376064



6905431



15263976



6908265

Same Dimension

The Same Dimension uses a secret algorithm to generate beautiful new colors.



10383955



13601113



10393427



5196359



9386752



984576

Inverse Universe

The Inverse Universe completely reimagines the original color for something new.



5472158



5873359



5462686



4672591



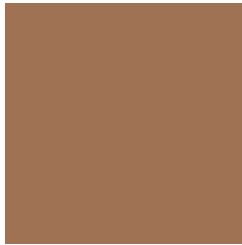
21647



2319

Previews

White Background



This preview shows how the Decimal color 10383955 looks on a white background.

Color Contrast Check

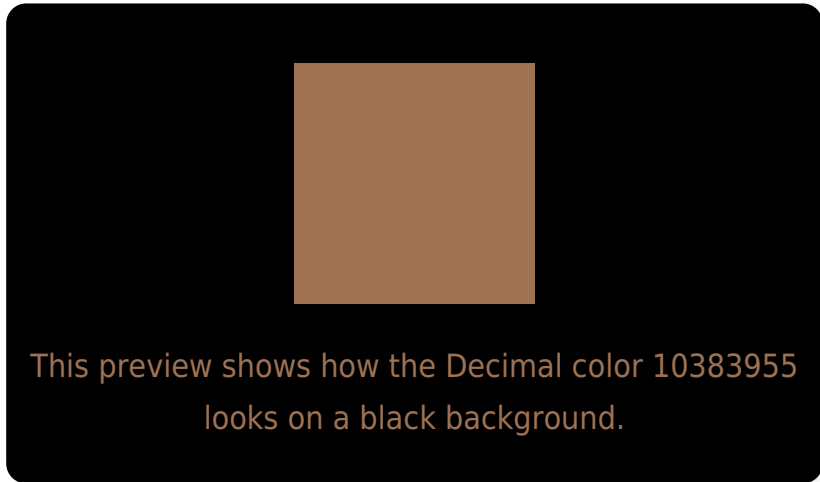
Large Text (above 18pt) WCAG AA ✓ Pass

Any Text WCAG AA × Fail

Large Text (above 18pt) WCAG AAA × Fail

Any Text WCAG AAA × Fail

Black Background



Color Contrast Check

Large Text (above 18pt) WCAG AA ✓ Pass

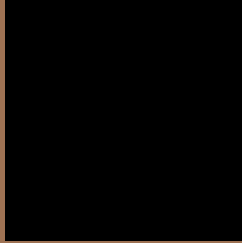
Any Text WCAG AA ✓ Pass

Large Text (above 18pt) WCAG AAA ✓ Pass

Any Text WCAG AAA × Fail

If you want to check with other color combinations, try the [Color Contrast Checker](#).

Decimal 10383955 Background



This preview shows how black text looks on a background with the Decimal color 10383955.



This preview shows how white text looks on a background with the Decimal color 10383955.

Color Blindness Simulation

Color vision deficiency is a very complex topic, and I could not describe the different causes any better than Wikipedia does, so if you want to learn more, you should check out their [article about color blindness](#).


Dichromacy



Original Color
10383955

Protanopia
8748119

Deuteranopia
9729618



Tritanopia
10579318

Trichromacy



Original Color
10383955

Protanomaly
9336918

Deuteranomaly
9991506

Tritanomaly
10514281

Monochromacy



Original Color
10383955

Achromatopsia
8158332

Achromatomaly
8943725

CSS Examples

Text

The CSS property to change the color of the text to Decimal 10383955 is called "color". The color property can be set on classes, ids or directly on the HTML element.

This example shows how text in the color #9E7253 looks like.

```
.text, #text, p{  
  color:#9E7253  
}
```

If you want to add a text shadow in that color use the text-shadow property, you can generate a text shadow directly with our [CSS Text Shadow Generator](#).

Here you see how black text with a 4 pixel #9E7253 colored shadow looks like.

```
.shadow{ text-shadow: 4px 4px 2px #9E7253
}
```

Border

The CSS property to change the border of an element to Decimal 10383955 is called "border". The border property can be set on classes, ids or directly on the HTML element.

This example shows the color as border, it can be applied via the CSS property "border" or "border-color".

```
.border, #border, table{ border:4px solid
#9E7253 }
```

If only the border color should be changed use the property `border-color`.

```
.border{ border-color:#9E7253 }
```

If you want to add a box shadow in that color use:

Here you see how a box with a 4 pixel #9E7253 colored shadow looks like.

```
.boxshadow{ -moz-box-shadow:4px 4px 4px  
4px #9E7253; -webkit-box-shadow:4px 4px  
4px 4px #9E7253; box-shadow:4px 4px 4px  
4px #9E7253 }
```

Background

The CSS property to change the background color of an element to Decimal 10383955 is called "background". The background property can be set on classes, ids or directly on the HTML element.

```
.background, #background, body{  
background:#9E7253 }
```

If only the background color should be changed can be used:

```
.background{ background-color:#9E7253 }
```

This example shows the color as background, it is applied via the CSS property "background".

To optimize and compress your CSS code, you can use our [online CSS compressor and optimizer](#) based on csstidy. If you want to create a linear or radial gradient as background or border, check our [CSS Gradient Generator](#).

Hey! You found this booklet interesting? Support Converting Colors with the new Membership Option!

The pro membership hides all ads, plus gives you double the colors in the color bucket, and more awesome pro features!

[Learn more, Memberships starting at \\$2.50/m!](#)

**Follow me
on Twitter!**

@ConvertingColor