

# Converting Colors

Decimal(10452830)

Have a look what the booklet for  
Decimal(10452830) contains.

<b>Decimal(10452830)</b> .....	3
<i><b>Conversions</b></i> .....	4
<i><b>Details</b></i> .....	6
<i><b>Harmonies</b></i> .....	11
<i><b>Previews</b></i> .....	23
<i><b>Color Blindness Simulation</b></i> .....	26
<i><b>CSS Examples</b></i> .....	29

**Color**

**Decimal(10452830)**

# Conversions

## Conversions Part 1

<b>Format</b>	<b>Color</b>
Hex	9F7F5E
RGB	159, 127, 94
RGB Percent	62%, 50%, 37%
CMY	0.3765, 0.5020, 0.6314
CMYK	0.00, 0.20, 0.41, 0.38
HSL	30°, 26%, 50%
HSV	30°, 41%, 62%
XYZ	23.9078, 23.3578, 13.8381
YIQ	132.8060, 29.6650, -3.4790

# Conversions

## Conversions Part 2

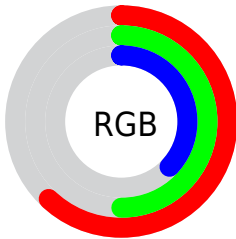
<b>Format</b>	<b>Color</b>
<a href="#">RYB</a>	<a href="#">157, 159, 94</a>
Decimal	<a href="#">10452830</a>
CIELab	<a href="#">55.44, 7.70, 22.62</a>
CIELCh	<a href="#">55, 23.890, 71.203</a>
Yxy	<a href="#">23.3578, 0.3913, 0.3823</a>
Android (android.graphics.Color)	<a href="#">4288642910</a> ( <a href="#">0xFF9F7F5E</a> )
YUV	<a href="#">132.8060, -19.1314, 22.9721</a>
Hunter-Lab	<a href="#">48.3299, 3.7229, 16.8547</a>

# Details

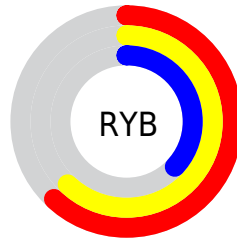
The Decimal color **10452830** is a dark color, and the websafe version is hex **CC9966**. A complement of this color would be **6192799**, and the grayscale version is **8750469**.

A 20% lighter version of the original color is **14136465**, and **6966831** is the 20% darker color. If you saturate the color by 10%, you get **10450766**, and if you desaturate by 10%, it is **10454894**.

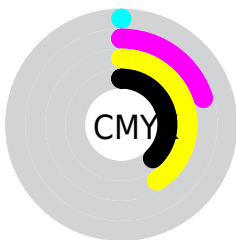
# Distribution



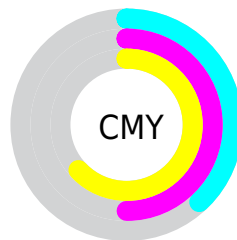
- Red (62%)
- Green (50%)
- Blue (37%)



- Red (62%)
- Yellow (62%)
- Blue (37%)



- Cyan (0%)
- Magenta (20%)
- Yellow (41%)
- Black (38%)



- Cyan (38%)
- Magenta (50%)
- Yellow (63%)

# Brightness & Saturation Gradients

These gradients show how the Decimal color 10452830 changes by changing the brightness by 10 percent. The first figure shows a shift by +10% for each color and the second figure -10%.

Similar to the brightness gradients but the following saturation gradients show a change of the Decimal color 10452830 by changing the saturation by 10% instead.



 10452830

 10452830

16777215

 8676934

 14136465

 6966831

 16043947

 5322522

 16772039

 3744256

 16777187

 2166016

 0

 10452830

 10452830

 10450766

 10454894

 10448702

 10456958

■ 10446894

■ 10458766

■ 10444830

■ 10460830

■ 10442766

■ 10462894

■ 10440960

■ 10464957

■ 10467021

■ 10469085

■ 10470893

# Harmonies

## Analogous

The Analogous color harmony consists of three colors that are next to each other on the color wheel.



11237738



10452830



9209436

# Triad

The Triadic color harmony groups three colors that are evenly spaced from another and form a triangle on the color wheel.



10452830



4821132



9600420

# Complementary

The Complementary color scheme is a pair of colors which are on the opposite of each other on the color wheel.



10452830



6192799

# Split Complementary

Split-complementary colors differ from the complementary color scheme. The scheme consists of three colors, the original color and two neighbors of the complement color.



7767213



10452830



4558751

# Square

The Square scheme is like the rectangle color scheme, but the four colors are evenly spaced on the color wheel.



10452830



6131575



5802923



10844051

# Rectangle

The Rectangle color scheme consists of four colors that form a rectangle on the color wheel.



10452830



8227425



5802923



9011112



# Sweetspot

The Sweet Spot groups the original color and five complimentary colors.



10452830



13615798



10444415



6906202



15263976



6908265



# Same Dimension

The Same Dimension uses a secret algorithm to generate beautiful new colors.



10452830



13606249



10461022



5196615



9390080



985088



# Inverse Universe

The Inverse Universe completely reimagines the original color for something new.



6192799



6921167



6184607



4672335



18063

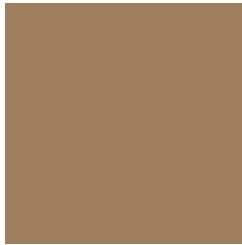


2063



# Previews

## White Background



This preview shows how the Decimal color 10452830 looks on a white background.

## Color Contrast Check

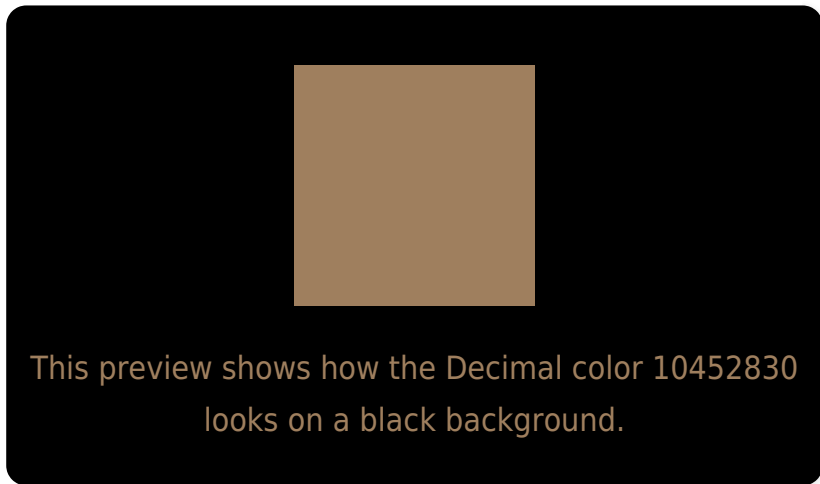
Large Text (above 18pt) WCAG AA ✓ Pass

Any Text WCAG AA × Fail

Large Text (above 18pt) WCAG AAA × Fail

Any Text WCAG AAA × Fail

# Black Background



## Color Contrast Check

Large Text (above 18pt) WCAG AA ✓ Pass

Any Text WCAG AA ✓ Pass

Large Text (above 18pt) WCAG AAA ✓ Pass

Any Text WCAG AAA × Fail

If you want to check with other color combinations, try the [Color Contrast Checker](#).



## Decimal 10452830 Background



This preview shows how black text looks on a background with the Decimal color 10452830.



This preview shows how white text looks on a background with the Decimal color 10452830.

# Color Blindness Simulation

Color vision deficiency is a very complex topic, and I could not describe the different causes any better than Wikipedia does, so if you want to learn more, you should check out their [article about color blindness](#).

## Dichromacy



**Original Color**  
10452830

**Protanopia**  
9405793

**Deuteranopia**  
10387294



**Tritanopia**  
10713731

# Trichromacy



**Original Color**  
10452830

**Protanomaly**  
9798496

**Deuteranomaly**  
10387294

**Tritanomaly**  
10648694

# Monochromacy



**Original Color**  
10452830

**Achromatopsia**  
8750469

**Achromatomaly**  
9339767

# CSS Examples

## Text

The CSS property to change the color of the text to Decimal 10452830 is called "color". The color property can be set on classes, ids or directly on the HTML element.

This example shows how text in the color #9F7F5E looks like.

```
.text, #text, p{  
    color:#9F7F5E  
}
```

If you want to add a text shadow in that color use the text-shadow property, you can generate a text shadow directly with our [CSS Text Shadow Generator](#).

Here you see how black text with a 4 pixel #9F7F5E colored shadow looks like.

```
.shadow{ text-shadow: 4px 4px 2px #9F7F5E
}
```

## Border

The CSS property to change the border of an element to Decimal 10452830 is called "border". The border property can be set on classes, ids or directly on the HTML element.

This example shows the color as border, it can be applied via the CSS property "border" or "border-color".

```
.border, #border, table{ border:4px solid
#9F7F5E }
```

If only the border color should be changed use the property `border-color`.

```
.border{ border-color:#9F7F5E }
```

If you want to add a box shadow in that color use:

Here you see how a box with a 4 pixel #9F7F5E colored shadow looks like.

```
.boxshadow{ -moz-box-shadow:4px 4px 4px  
4px #9F7F5E; -webkit-box-shadow:4px 4px  
4px 4px #9F7F5E; box-shadow:4px 4px 4px  
4px #9F7F5E }
```

# Background

The CSS property to change the background color of an element to Decimal 10452830 is called "background". The background property can be set on classes, ids or directly on the HTML element.

```
.background, #background, body{  
background:#9F7F5E }
```

If only the background color should be changed can be used:

```
.background{ background-color:#9F7F5E }
```

This example shows the color as background, it is applied via the CSS property "background".

To optimize and compress your CSS code, you can use our [online CSS compressor and optimizer](#) based on csstidy. If you want to create a linear or radial gradient as background or border, check our [CSS Gradient Generator](#).



Hey! You found this booklet interesting? Support Converting Colors with the new Membership Option!

The pro membership hides all ads, plus gives you double the colors in the color bucket, and more awesome pro features!

**[Learn more, Memberships starting at \\$2.50/m!](#)**

**Follow me  
on Twitter!**

@ConvertingColor