

# Converting Colors

Decimal(10516050)

Have a look what the booklet for  
Decimal(10516050) contains.

<b>Decimal(10516050)</b> .....	3
<b><i>Conversions</i></b> .....	4
<b><i>Details</i></b> .....	6
<b><i>Harmonies</i></b> .....	11
<b><i>Previews</i></b> .....	23
<b><i>Color Blindness Simulation</i></b> .....	26
<b><i>CSS Examples</i></b> .....	29

# Color

**Decimal(10516050)**

# Conversions

## Conversions Part 1

<b>Format</b>	<b>Color</b>
Hex	A07652
RGB	160, 118, 82
RGB Percent	63%, 46%, 32%
CMY	0.3725, 0.5373, 0.6784
CMYK	0.00, 0.26, 0.49, 0.37
HSL	28°, 32%, 47%
HSV	28°, 49%, 63%
XYZ	22.4986, 21.0396, 10.8579
YIQ	126.4540, 36.5880, -2.2920

# Conversions

## Conversions Part 2

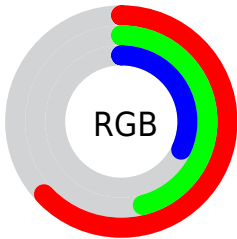
<b>Format</b>	<b>Color</b>
<b>R<sub>YB</sub></b>	160, 149, 82
Decimal	10516050
CIE <sub>Lab</sub>	52.99, 11.91, 26.21
CIE <sub>LCh</sub>	53, 28.789, 65.553
Yxy	21.0396, 0.4136, 0.3868
Android (android.graphics.Color)	4288706130 (0xFFA07652)
YUV	126.4540, -21.9158, 29.4198
Hunter-Lab	45.8690, 7.2831, 18.0734

# Details

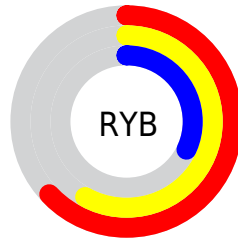
The Decimal color **10516050** is a dark color, and the websafe version is hex **996633**. A complement of this color would be **5405856**, and the grayscale version is **8355711**.

A 20% lighter version of the original color is **14264964**, and **6964772** is the 20% darker color. If you saturate the color by 10%, you get **10513730**, and if you desaturate by 10%, it is **10518370**.

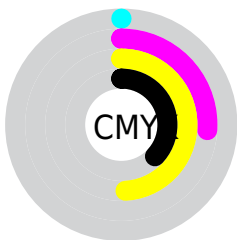
# Distribution



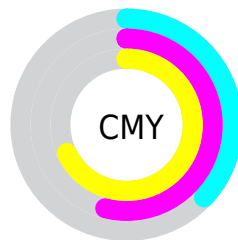
- Red (63%)
- Green (46%)
- Blue (32%)



- Red (63%)
- Yellow (58%)
- Blue (32%)



- Cyan (0%)
- Magenta (26%)
- Yellow (49%)
- Black (37%)



- Cyan (37%)
- Magenta (54%)
- Yellow (68%)

# Brightness & Saturation Gradients


These gradients show how the Decimal color 10516050 changes by changing the brightness by 10 percent. The first figure shows a shift by +10% for each color and the second figure -10%.

Similar to the brightness gradients but the following saturation gradients show a change of the Decimal color 10516050 by changing the saturation by 10% instead.



 10516050       10516050


16777215       8740155

 14264964       6964772

 16172446       5254927

 16769465       3676672

 16776917       2097408

 16777201       0

 10516050       10516050

 10513730       10518370

 10511666       10520434

 10509346

 10522754

 10507282

 10524818

 10504962

 10527138

 10504704

 10529458

 10531522

 10533842

 10536162

# Harmonies

## Analogous

The Analogous color harmony consists of three colors that are next to each other on the color wheel.



11366243



10516050



9142093

# Triad

The Triadic color harmony groups three colors that are evenly spaced from another and form a triangle on the color wheel.



10516050



3312770



8943271

# Complementary

The Complementary color scheme is a pair of colors which are on the opposite of each other on the color wheel.



10516050



5405856

# Split Complementary

Split-complementary colors differ from the complementary color scheme. The scheme consists of three colors, the original color and two neighbors of the complement color.



6520751



10516050



2067354

# Square

The Square scheme is like the rectangle color scheme, but the four colors are evenly spaced on the color wheel.



10516050



5409385



3835819



10645395

# Rectangle

The Rectangle color scheme consists of four colors that form a rectangle on the color wheel.



10516050



7963473



3835819



8157611



# Sweetspot

The Sweet Spot groups the original color and five complimentary colors.



10516050



13746354



10506877



6905430



15263976



6908265



# Same Dimension

The Same Dimension uses a secret algorithm to generate beautiful new colors.



10516050



13733718



10525778



5196615



9388544



984832



# Inverse Universe

The Inverse Universe completely reimagines the original color for something new.



5405856



5675217



5396128



4672335



19855

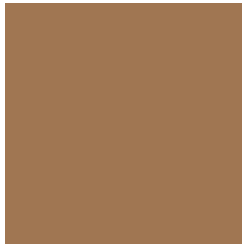


2063



# Previews

## White Background



This preview shows how the Decimal color 10516050 looks on a white background.

## Color Contrast Check

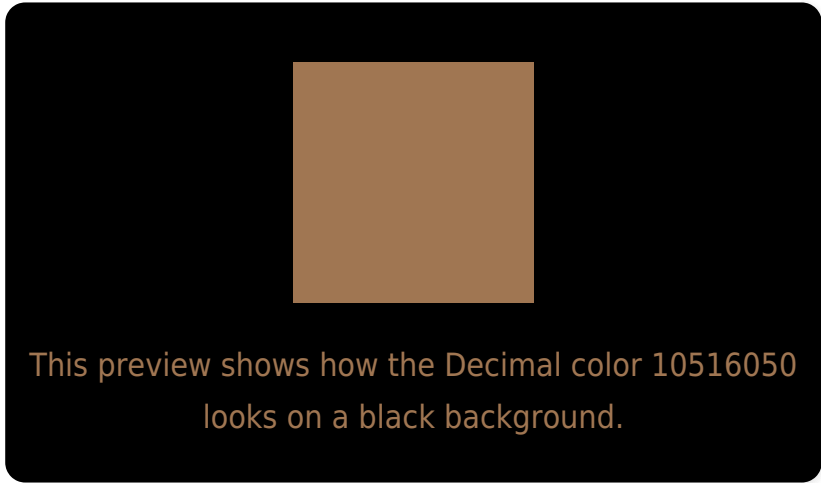
Large Text (above 18pt) WCAG AA ✓ Pass

Any Text WCAG AA × Fail

Large Text (above 18pt) WCAG AAA × Fail

Any Text WCAG AAA × Fail

# Black Background



## Color Contrast Check

Large Text (above 18pt) WCAG AA ✓ Pass

Any Text WCAG AA ✓ Pass

Large Text (above 18pt) WCAG AAA ✓ Pass

Any Text WCAG AAA × Fail

If you want to check with other color combinations, try the [Color Contrast Checker](#).



## Decimal 10516050 Background



This preview shows how black text looks on a background with the Decimal color 10516050.




This preview shows how white text looks on a background with the Decimal color 10516050.

# Color Blindness Simulation

Color vision deficiency is a very complex topic, and I could not describe the different causes any better than Wikipedia does, so if you want to learn more, you should check out their [article about color blindness](#).

## Dichromacy





**Tritanopia**  
10711418

# Trichromacy



**Original Color**  
10516050

**Protanomaly**  
9534549

**Deuteranomaly**  
10254417

**Tritanomaly**  
10646379

# Monochromacy



**Original Color**  
10516050

**Achromatopsia**  
8289918

**Achromatomaly**  
9075566

# CSS Examples

## Text

The CSS property to change the color of the text to Decimal 10516050 is called "color". The color property can be set on classes, ids or directly on the HTML element.

This example shows how text in the color #A07652 looks like.

```
.text, #text, p{  
    color:#A07652  
}
```

If you want to add a text shadow in that color use the text-shadow property, you can generate a text shadow directly with our [CSS Text Shadow Generator](#).

Here you see how black text with a 4 pixel #A07652 colored shadow looks like.

```
.shadow{ text-shadow: 4px 4px 2px #A07652  
}
```

## Border

The CSS property to change the border of an element to Decimal 10516050 is called "border". The border property can be set on classes, ids or directly on the HTML element.

This example shows the color as border, it can be applied via the CSS property "border" or "border-color".

```
.border, #border, table{ border:4px solid  
#A07652 }
```

If only the border color should be changed use the property `border-color`.

```
.border{ border-color:#A07652 }
```

If you want to add a box shadow in that color use:

Here you see how a box with a 4 pixel #A07652 colored shadow looks like.

```
.boxshadow{ -moz-box-shadow:4px 4px 4px  
4px #A07652; -webkit-box-shadow:4px 4px  
4px 4px #A07652; box-shadow:4px 4px 4px  
4px #A07652 }
```

# Background

The CSS property to change the background color of an element to Decimal 10516050 is called "background". The background property can be set on classes, ids or directly on the HTML element.

```
.background, #background, body{  
background:#A07652 }
```

If only the background color should be changed can be used:

```
.background{ background-color:#A07652 }
```

This example shows the color as background, it is applied via the CSS property "background".

To optimize and compress your CSS code, you can use our [online CSS compressor and optimizer](#) based on csstidy. If you want to create a linear or radial gradient as background or border, check our [CSS Gradient Generator](#).



Hey! You found this booklet interesting? Support Converting Colors with the new Membership Option!

The pro membership hides all ads, plus gives you double the colors in the color bucket, and more awesome pro features!

**[Learn more, Memberships starting at \\$2.50/m!](#)**

**Follow me  
on Twitter!**

@ConvertingColor