

Converting Colors

Decimal(10648148)

Have a look what the booklet for
Decimal(10648148) contains.

Decimal(10648148)	3
<i>Conversions</i>	4
<i>Details</i>	6
<i>Harmonies</i>	11
<i>Previews</i>	23
<i>Color Blindness Simulation</i>	26
<i>CSS Examples</i>	29

Color

Decimal(10648148)

Conversions

Conversions Part 1

Format	Color
Hex	A27A54
RGB	162, 122, 84
RGB Percent	64%, 48%, 33%
CMY	0.3647, 0.5216, 0.6706
CMYK	0.00, 0.25, 0.48, 0.36
HSL	29°, 32%, 48%
HSV	29°, 48%, 64%
XYZ	23.4601, 22.2405, 11.4439
YIQ	129.6280, 36.0380, -3.3380

Conversions

Conversions Part 2

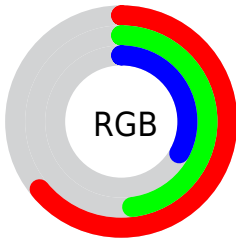
Format	Color
RYB	162, 158, 84
Decimal	10648148
CIELab	54.28, 10.70, 26.79
CIELCh	54, 28.850, 68.219
Yxy	22.2405, 0.4105, 0.3892
Android (android.graphics.Color)	4288838228 (0xFFA27A54)
YUV	129.6280, -22.4946, 28.3902
Hunter-Lab	47.1599, 6.2665, 18.6245

Details

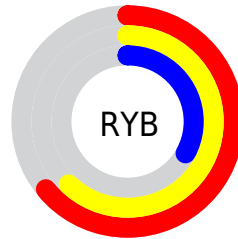
The Decimal color **10648148** is a dark color, and the websafe version is hex **996633**. A complement of this color would be **5536930**, and the grayscale version is **8553090**.

A 20% lighter version of the original color is **14397062**, and **7096614** is the 20% darker color. If you saturate the color by 10%, you get **10646084**, and if you desaturate by 10%, it is **10650212**.

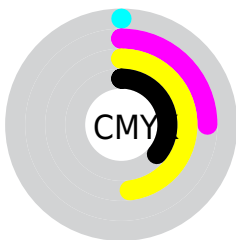
Distribution



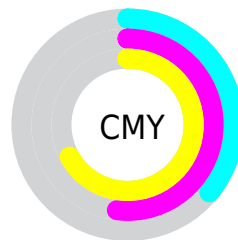
- Red (64%)
- Green (48%)
- Blue (33%)



- Red (64%)
- Yellow (62%)
- Blue (33%)



- Cyan (0%)
- Magenta (25%)
- Yellow (48%)
- Black (36%)



- Cyan (36%)
- Magenta (52%)
- Yellow (67%)

Brightness & Saturation Gradients


These gradients show how the Decimal color 10648148 changes by changing the brightness by 10 percent. The first figure shows a shift by +10% for each color and the second figure -10%.


Similar to the brightness gradients but the following saturation gradients show a change of the Decimal color 10648148 by changing the saturation by 10% instead.

 10648148  10648148

16777215  8872252

 14397062  7096614

 16304800  5387024


 16770748  3808512

 16777175  2230016

 16777204  0

 10648148  10648148

 10646084  10650212

 10643764  10652532

■ 10641699

■ 10654597

■ 10639635

■ 10656661

■ 10637315

■ 10658981

■ 10637056

■ 10661045

■ 10663109

■ 10665174

■ 10667494

Harmonies

Analogous

The Analogous color harmony consists of three colors that are next to each other on the color wheel.



11563620



10648148



9208656

Triad

The Triadic color harmony groups three colors that are evenly spaced from another and form a triangle on the color wheel.



10648148



3379080



9337257

Complementary

The Complementary color scheme is a pair of colors which are on the opposite of each other on the color wheel.



10648148



5536930

Split Complementary

Split-complementary colors differ from the complementary color scheme. The scheme consists of three colors, the original color and two neighbors of the complement color.



6980275



10648148



2461344

Square

The Square scheme is like the rectangle color scheme, but the four colors are evenly spaced on the color wheel.



10648148



5475951



4295087



10973589

Rectangle

The Rectangle color scheme consists of four colors that form a rectangle on the color wheel.



10648148



8030037



4295087



8617134

Sweetspot

The Sweet Spot groups the original color and five complimentary colors.



10648148



13943990



10638460



7037529



15461355



7039851

Same Dimension

The Same Dimension uses a secret algorithm to generate beautiful new colors.



10648148



13931865



10658132



5393737



9520896



1181952

Inverse Universe

The Inverse Universe completely reimagines the original color for something new.



5536930



5871828



5526946



4804178



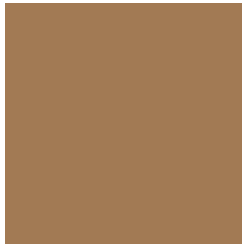
19345



2322

Previews

White Background



This preview shows how the Decimal color 10648148 looks on a white background.

Color Contrast Check

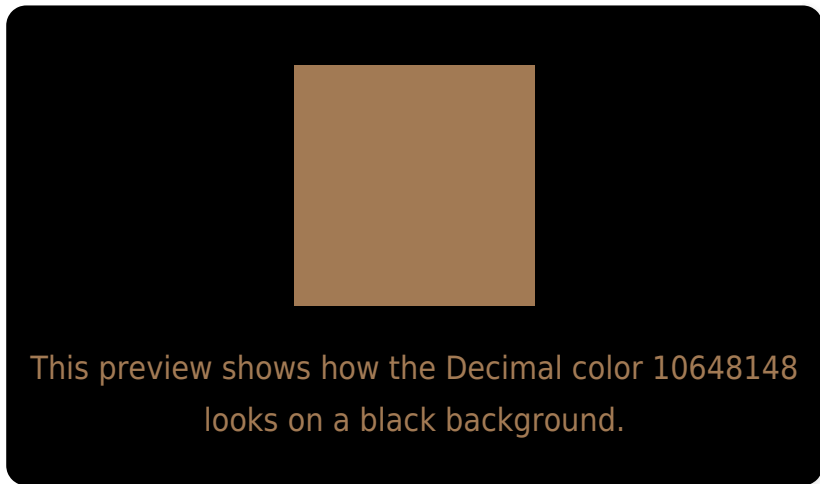
Large Text (above 18pt) WCAG AA ✓ Pass

Any Text WCAG AA × Fail

Large Text (above 18pt) WCAG AAA × Fail

Any Text WCAG AAA × Fail

Black Background



Color Contrast Check

Large Text (above 18pt) WCAG AA ✓ Pass

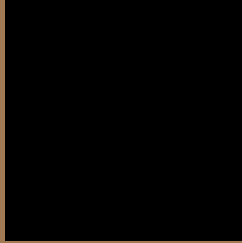
Any Text WCAG AA ✓ Pass

Large Text (above 18pt) WCAG AAA ✓ Pass

Any Text WCAG AAA × Fail

If you want to check with other color combinations, try the [Color Contrast Checker](#).

Decimal 10648148 Background



This preview shows how black text looks on a background with the Decimal color 10648148.



This preview shows how white text looks on a background with the Decimal color 10648148.

Color Blindness Simulation

Color vision deficiency is a very complex topic, and I could not describe the different causes any better than Wikipedia does, so if you want to learn more, you should check out their [article about color blindness](#).

Dichromacy





Tritanopia
10909054

Trichromacy



Original Color
10648148

Protanomaly
9797462

Deuteranomaly
10451796

Tritanomaly
10844015

Monochromacy



Original Color
10648148

Achromatopsia
8553090

Achromatomaly
9338737

CSS Examples

Text

The CSS property to change the color of the text to Decimal 10648148 is called "color". The color property can be set on classes, ids or directly on the HTML element.

This example shows how text in the color #A27A54 looks like.

```
.text, #text, p{  
    color:#A27A54  
}
```

If you want to add a text shadow in that color use the text-shadow property, you can generate a text shadow directly with our [CSS Text Shadow Generator](#).

Here you see how black text with a 4 pixel #A27A54 colored shadow looks like.

```
.shadow{ text-shadow: 4px 4px 2px #A27A54
}
```

Border

The CSS property to change the border of an element to Decimal 10648148 is called "border". The border property can be set on classes, ids or directly on the HTML element.

This example shows the color as border, it can be applied via the CSS property "border" or "border-color".

```
.border, #border, table{ border:4px solid
#A27A54 }
```

If only the border color should be changed use the property `border-color`.

```
.border{ border-color:#A27A54 }
```

If you want to add a box shadow in that color use:

Here you see how a box with a 4 pixel #A27A54 colored shadow looks like.

```
.boxshadow{ -moz-box-shadow:4px 4px 4px  
4px #A27A54; -webkit-box-shadow:4px 4px  
4px 4px #A27A54; box-shadow:4px 4px 4px  
4px #A27A54 }
```

Background

The CSS property to change the background color of an element to Decimal 10648148 is called "background". The background property can be set on classes, ids or directly on the HTML element.

```
.background, #background, body{  
background:#A27A54 }
```

If only the background color should be changed can be used:

```
.background{ background-color:#A27A54 }
```

This example shows the color as background, it is applied via the CSS property "background".

To optimize and compress your CSS code, you can use our [online CSS compressor and optimizer](#) based on csstidy. If you want to create a linear or radial gradient as background or border, check our [CSS Gradient Generator](#).

Hey! You found this booklet interesting? Support Converting Colors with the new Membership Option!

The pro membership hides all ads, plus gives you double the colors in the color bucket, and more awesome pro features!

[Learn more, Memberships starting at \\$2.50/m!](#)

**Follow me
on Twitter!**

@ConvertingColor