

# Converting Colors

Decimal(10648149)

Have a look what the booklet for  
Decimal(10648149) contains.

<b>Decimal(10648149)</b> .....	3
<i><b>Conversions</b></i> .....	4
<i><b>Details</b></i> .....	6
<i><b>Harmonies</b></i> .....	11
<i><b>Previews</b></i> .....	23
<i><b>Color Blindness Simulation</b></i> .....	26
<i><b>CSS Examples</b></i> .....	29

**Color**

**Decimal(10648149)**

# Conversions

## Conversions Part 1

<b>Format</b>	<b>Color</b>
Hex	A27A55
RGB	162, 122, 85
RGB Percent	64%, 48%, 33%
CMY	0.3647, 0.5216, 0.6667
CMYK	0.00, 0.25, 0.48, 0.36
HSL	29°, 31%, 48%
HSV	29°, 48%, 64%
XYZ	23.4995, 22.2563, 11.6517
YIQ	129.7420, 35.7170, -3.0270

# Conversions

## Conversions Part 2

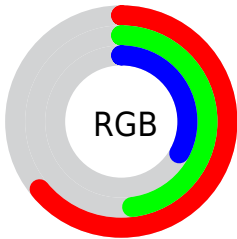
<b>Format</b>	<b>Color</b>
<b>RYB</b>	162, 156, 85
Decimal	10648149
CIELab	54.30, 10.81, 26.25
CIELCh	54, 28.389, 67.620
Yxy	22.2563, 0.4093, 0.3877
Android (android.graphics.Color)	4288838229 (0xFFA27A55)
YUV	129.7420, -22.0578, 28.2903
Hunter-Lab	47.1766, 6.3550, 18.3802

# Details

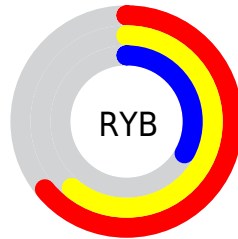
The Decimal color **10648149** is a dark color, and the websafe version is hex **996633**. A complement of this color would be **5602722**, and the grayscale version is **8553090**.

A 20% lighter version of the original color is **14397063**, and **7096615** is the 20% darker color. If you saturate the color by 10%, you get **10646085**, and if you desaturate by 10%, it is **10650213**.

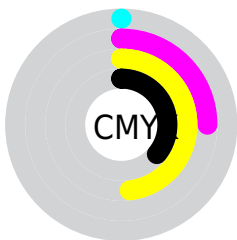
# Distribution



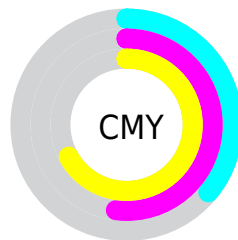
- Red (64%)
- Green (48%)
- Blue (33%)



- Red (64%)
- Yellow (61%)
- Blue (33%)



- Cyan (0%)
- Magenta (25%)
- Yellow (48%)
- Black (36%)



- Cyan (36%)
- Magenta (52%)
- Yellow (67%)

# Brightness & Saturation Gradients

These gradients show how the Decimal color 10648149 changes by changing the brightness by 10 percent. The first figure shows a shift by +10% for each color and the second figure -10%.

Similar to the brightness gradients but the following saturation gradients show a change of the Decimal color 10648149 by changing the saturation by 10% instead.



 10648149       10648149


16777215       8872253

 14397063       7096615

 16304802       5387025

 16770749       3808512

 16777177       2230016

 16777205       0

 10648149       10648149

 10646085       10650213

 10643765       10652533

■ 10641700

■ 10654598

■ 10639380

■ 10656918

■ 10637316

■ 10658982

■ 10636800

■ 10661046

■ 10663366

■ 10665431

■ 10667751

# Harmonies

## Analogous

The Analogous color harmony consists of three colors that are next to each other on the color wheel.



11563621



10648149



9208401

# Triad

The Triadic color harmony groups three colors that are evenly spaced from another and form a triangle on the color wheel.



10648149



3575687



9271721

# Complementary

The Complementary color scheme is a pair of colors which are on the opposite of each other on the color wheel.



10648149



5602722

# Split Complementary

Split-complementary colors differ from the complementary color scheme. The scheme consists of three colors, the original color and two neighbors of the complement color.



6980274



10648149



2657951

# Square

The Square scheme is like the rectangle color scheme, but the four colors are evenly spaced on the color wheel.



10648149



5541486



4360623



10908309

# Rectangle

The Rectangle color scheme consists of four colors that form a rectangle on the color wheel.



10648149



8095574



4360623



8551597



# Sweetspot

The Sweet Spot groups the original color and five complimentary colors.



10648149



13943990



10638718



7037529



15461355



7039851



# Same Dimension

The Same Dimension uses a secret algorithm to generate beautiful new colors.



10648149



13931867



10657621



5393737



9520640



1181952



# Inverse Universe

The Inverse Universe completely reimagines the original color for something new.



5602722



6003412



5593250



4804178



19601

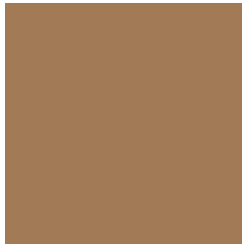


2322



# Previews

## White Background



This preview shows how the Decimal color 10648149 looks on a white background.

## Color Contrast Check

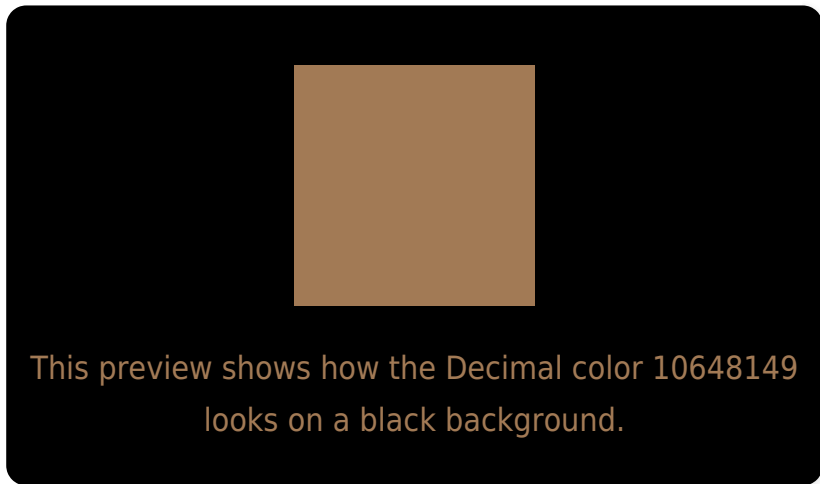
Large Text (above 18pt) WCAG AA ✓ Pass

Any Text WCAG AA × Fail

Large Text (above 18pt) WCAG AAA × Fail

Any Text WCAG AAA × Fail

# Black Background



## Color Contrast Check

Large Text (above 18pt) WCAG AA ✓ Pass

Any Text WCAG AA ✓ Pass

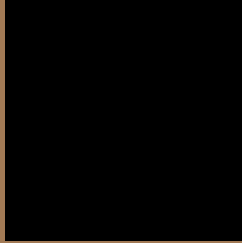
Large Text (above 18pt) WCAG AAA ✓ Pass

Any Text WCAG AAA × Fail

If you want to check with other color combinations, try the [Color Contrast Checker](#).



## Decimal 10648149 Background



This preview shows how black text looks on a background with the Decimal color 10648149.



This preview shows how white text looks on a background with the Decimal color 10648149.

# Color Blindness Simulation

Color vision deficiency is a very complex topic, and I could not describe the different causes any better than Wikipedia does, so if you want to learn more, you should check out their [article about color blindness](#).

## Dichromacy



**Original Color**  
10648149

**Protanopia**  
9273944

**Deuteranopia**  
10320981



**Tritanopia**  
10909054

# Trichromacy



**Original Color**  
10648149

**Protanomaly**  
9797463

**Deuteranomaly**  
10451797

**Tritanomaly**  
10844015

# Monochromacy



**Original Color**  
10648149

**Achromatopsia**  
8553090

**Achromatomaly**  
9338738

# CSS Examples

## Text

The CSS property to change the color of the text to Decimal 10648149 is called "color". The color property can be set on classes, ids or directly on the HTML element.

This example shows how text in the color #A27A55 looks like.

```
.text, #text, p{  
  color:#A27A55  
}
```

If you want to add a text shadow in that color use the text-shadow property, you can generate a text shadow directly with our [CSS Text Shadow Generator](#).

Here you see how black text with a 4 pixel #A27A55 colored shadow looks like.

```
.shadow{ text-shadow: 4px 4px 2px #A27A55
}
```

## Border

The CSS property to change the border of an element to Decimal 10648149 is called "border". The border property can be set on classes, ids or directly on the HTML element.

This example shows the color as border, it can be applied via the CSS property "border" or "border-color".

```
.border, #border, table{ border:4px solid
#A27A55 }
```

If only the border color should be changed use the property border-color.

```
.border{ border-color:#A27A55 }
```

If you want to add a box shadow in that color use:

Here you see how a box with a 4 pixel #A27A55 colored shadow looks like.

```
.boxshadow{ -moz-box-shadow:4px 4px 4px  
4px #A27A55; -webkit-box-shadow:4px 4px  
4px 4px #A27A55; box-shadow:4px 4px 4px  
4px #A27A55 }
```

# Background

The CSS property to change the background color of an element to Decimal 10648149 is called "background". The background property can be set on classes, ids or directly on the HTML element.

```
.background, #background, body{  
background:#A27A55 }
```

If only the background color should be changed can be used:

```
.background{ background-color:#A27A55 }
```

This example shows the color as background, it is applied via the CSS property "background".

To optimize and compress your CSS code, you can use our [online CSS compressor and optimizer](#) based on csstidy. If you want to create a linear or radial gradient as background or border, check our [CSS Gradient Generator](#).



Hey! You found this booklet interesting? Support Converting Colors with the new Membership Option!

The pro membership hides all ads, plus gives you double the colors in the color bucket, and more awesome pro features!

**[Learn more, Memberships starting at \\$2.50/m!](#)**

**Follow me  
on Twitter!**

@ConvertingColor