

Converting Colors

Decimal(10714456)

Have a look what the booklet for
Decimal(10714456) contains.

Decimal(10714456)	3
<i>Conversions</i>	4
<i>Details</i>	6
<i>Harmonies</i>	11
<i>Previews</i>	23
<i>Color Blindness Simulation</i>	26
<i>CSS Examples</i>	29

Color

Decimal(10714456)

Conversions

Conversions Part 1

Format	Color
Hex	A37D58
RGB	163, 125, 88
RGB Percent	64%, 49%, 35%
CMY	0.3608, 0.5098, 0.6549
CMYK	0.00, 0.23, 0.46, 0.36
HSL	30°, 30%, 49%
HSV	30°, 46%, 64%
XYZ	24.1993, 23.1583, 12.4271
YIQ	132.1440, 34.5250, -3.4510

Conversions

Conversions Part 2

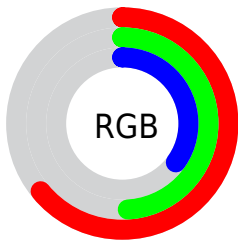
Format	Color
R_{YB}	163, 161, 88
Decimal	10714456
CIE _{Lab}	55.24, 9.85, 25.81
CIE _{LCh}	55, 27.623, 69.100
Yxy	23.1583, 0.4048, 0.3874
Android (android.graphics.Color)	4288904536 (0xFFA37D58)
YUV	132.1440, -21.7630, 27.0607
Hunter-Lab	48.1231, 5.5456, 18.3754

Details

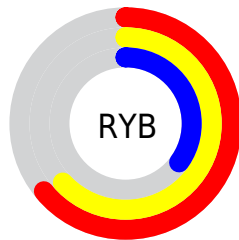
The Decimal color **10714456** is a dark color, and the websafe version is hex **996633**. A complement of this color would be **5799587**, and the grayscale version is **8684676**.

A 20% lighter version of the original color is **14398090**, and **7162922** is the 20% darker color. If you saturate the color by 10%, you get **10712392**, and if you desaturate by 10%, it is **10716520**.

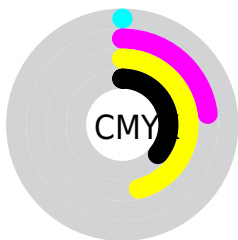
Distribution



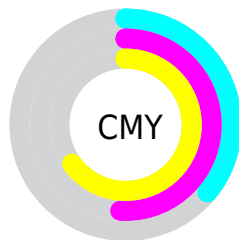
- Red (64%)
- Green (49%)
- Blue (35%)



- Red (64%)
- Yellow (63%)
- Blue (35%)



- Cyan (0%)
- Magenta (23%)
- Yellow (46%)
- Black (36%)



- Cyan (36%)
- Magenta (51%)
- Yellow (65%)

Brightness & Saturation Gradients


These gradients show how the Decimal color 10714456 changes by changing the brightness by 10 percent. The first figure shows a shift by +10% for each color and the second figure -10%.

Similar to the brightness gradients but the following saturation gradients show a change of the Decimal color 10714456 by changing the saturation by 10% instead.

 10714456  10714456

16777215  8938560

 14398090  7162922

 16371109  5453076

 16771520  3874816

 16777180  2296576

 16777209  0

 10714456  10714456

 10712392  10716520

 10710071  10718841

10708007

10720905

10705943

10722969

10703879

10725034

10702848

10727354

10729418

10731482

10733547

Harmonies

Analogous

The Analogous color harmony consists of three colors that are next to each other on the color wheel.



11630183



10714456



9274709

Triad

The Triadic color harmony groups three colors that are evenly spaced from another and form a triangle on the color wheel.



10714456



3903883



9534377

Complementary

The Complementary color scheme is a pair of colors which are on the opposite of each other on the color wheel.



10714456



5799587

Split Complementary

Split-complementary colors differ from the complementary color scheme. The scheme consists of three colors, the original color and two neighbors of the complement color.



7308467



10714456



3248290

Square

The Square scheme is like the rectangle color scheme, but the four colors are evenly spaced on the color wheel.



10714456



5738610



4885424



11105430

Rectangle

The Rectangle color scheme consists of four colors that form a rectangle on the color wheel.



10714456



8161882



4885424



8814254

Sweetspot

The Sweet Spot groups the original color and five complimentary colors.



10714456



13944246



10705023



7037529



15461355



7039851

Same Dimension

The Same Dimension uses a secret algorithm to generate beautiful new colors.



10714456



13932895



10723928



5393737



9521152



1181952

Inverse Universe

The Inverse Universe completely reimagines the original color for something new.



5799587



6265556



5790115



4804178



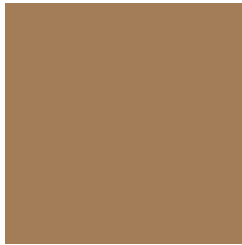
19089



2322

Previews

White Background



This preview shows how the Decimal color 10714456 looks on a white background.

Color Contrast Check

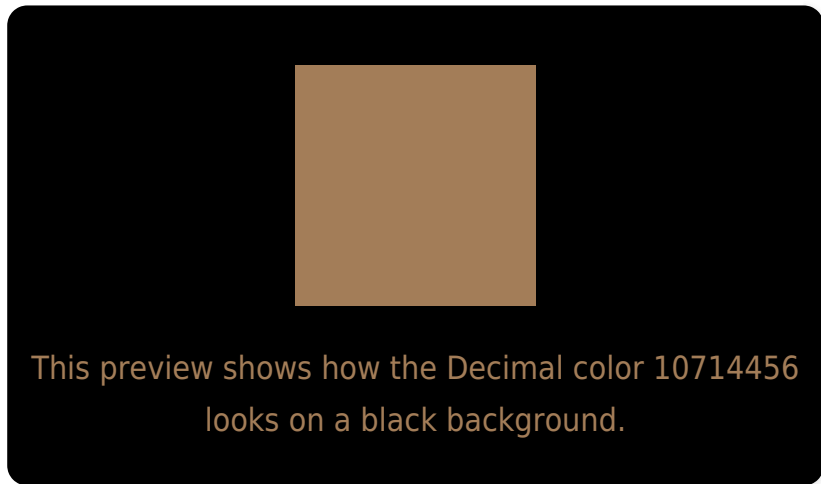
Large Text (above 18pt) WCAG AA ✓ Pass

Any Text WCAG AA × Fail

Large Text (above 18pt) WCAG AAA × Fail

Any Text WCAG AAA × Fail

Black Background



Color Contrast Check

Large Text (above 18pt) WCAG AA ✓ Pass

Any Text WCAG AA ✓ Pass

Large Text (above 18pt) WCAG AAA ✓ Pass

Any Text WCAG AAA × Fail

If you want to check with other color combinations, try the [Color Contrast Checker](#).

Decimal 10714456 Background



This preview shows how black text looks on a background with the Decimal color 10714456.



This preview shows how white text looks on a background with the Decimal color 10714456.

Color Blindness Simulation

Color vision deficiency is a very complex topic, and I could not describe the different causes any better than Wikipedia does, so if you want to learn more, you should check out their [article about color blindness](#).


Dichromacy



Original Color
10714456

Protanopia
9405531

Deuteranopia
10452824



Tritanopia
10975361

Trichromacy



Original Color
10714456

Protanomaly
9863514

Deuteranomaly
10518104

Tritanomaly
10910322

Monochromacy



Original Color
10714456

Achromatopsia
8684676

Achromatomaly
9404788

CSS Examples

Text

The CSS property to change the color of the text to Decimal 10714456 is called "color". The color property can be set on classes, ids or directly on the HTML element.

This example shows how text in the color #A37D58 looks like.

```
.text, #text, p{  
    color:#A37D58  
}
```

If you want to add a text shadow in that color use the text-shadow property, you can generate a text shadow directly with our [CSS Text Shadow Generator](#).

Here you see how black text with a 4 pixel #A37D58 colored shadow looks like.

```
.shadow{ text-shadow: 4px 4px 2px #A37D58
}
```

Border

The CSS property to change the border of an element to Decimal 10714456 is called "border". The border property can be set on classes, ids or directly on the HTML element.

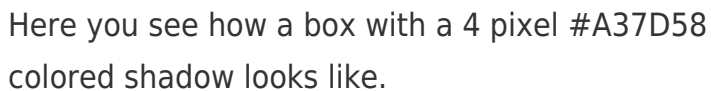
This example shows the color as border, it can be applied via the CSS property "border" or "border-color".

```
.border, #border, table{ border:4px solid
#A37D58 }
```

If only the border color should be changed use the property `border-color`.

```
.border{ border-color:#A37D58 }
```

If you want to add a box shadow in that color use:



Here you see how a box with a 4 pixel `#A37D58` colored shadow looks like.

```
.boxshadow{ -moz-box-shadow:4px 4px 4px  
4px #A37D58; -webkit-box-shadow:4px 4px  
4px 4px #A37D58; box-shadow:4px 4px 4px  
4px #A37D58 }
```

Background

The CSS property to change the background color of an element to Decimal 10714456 is called "background". The background property can be set on classes, ids or directly on the HTML element.

```
.background, #background, body{  
background:#A37D58 }
```

If only the background color should be changed can be used:

```
.background{ background-color:#A37D58 }
```

This example shows the color as background, it is applied via the CSS property "background".

To optimize and compress your CSS code, you can use our [online CSS compressor and optimizer](#) based on csstidy. If you want to create a linear or radial gradient as background or border, check our [CSS Gradient Generator](#).

Hey! You found this booklet interesting? Support Converting Colors with the new Membership Option!

The pro membership hides all ads, plus gives you double the colors in the color bucket, and more awesome pro features!

[Learn more, Memberships starting at \\$2.50/m!](#)

**Follow me
on Twitter!**

@ConvertingColor