

Converting Colors

Decimal(10715236)

Have a look what the booklet for
Decimal(10715236) contains.

Decimal(10715236)	3
<i>Conversions</i>	4
<i>Details</i>	6
<i>Harmonies</i>	11
<i>Previews</i>	23
<i>Color Blindness Simulation</i>	26
<i>CSS Examples</i>	29

Color

Decimal(10715236)

Conversions

Conversions Part 1

Format	Color
Hex	A38064
RGB	163, 128, 100
RGB Percent	64%, 50%, 39%
CMY	0.3608, 0.4980, 0.6078
CMYK	0.00, 0.21, 0.39, 0.36
HSL	27°, 26%, 52%
HSV	27°, 39%, 64%
XYZ	25.1237, 24.1450, 15.3929
YIQ	135.2730, 29.8480, -1.2880

Conversions

Conversions Part 2

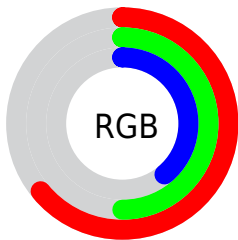
Format	Color
RYB	163, 150, 100
Decimal	10715236
CIELab	56.23, 9.54, 20.35
CIElCh	56, 22.476, 64.887
Yxy	24.1450, 0.3885, 0.3734
Android (android.graphics.Color)	4288905316 (0xFFA38064)
YUV	135.2730, -17.3896, 24.3166
Hunter-Lab	49.1375, 5.2751, 15.8230

Details

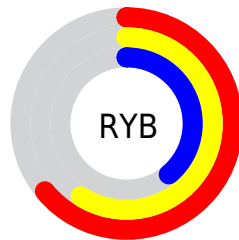
The Decimal color **10715236** is a dark color, and the websafe version is hex **CC9966**. A complement of this color would be **6588323**, and the grayscale version is **8882055**.

A 20% lighter version of the original color is **14398871**, and **7229237** is the 20% darker color. If you saturate the color by 10%, you get **10712916**, and if you desaturate by 10%, it is **10717556**.

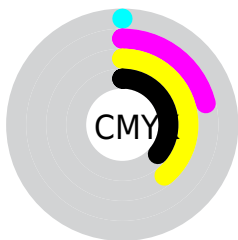
Distribution



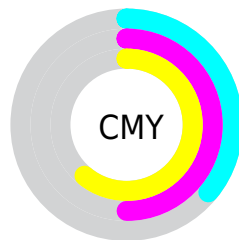
- Red (64%)
- Green (50%)
- Blue (39%)



- Red (64%)
- Yellow (59%)
- Blue (39%)



- Cyan (0%)
- Magenta (21%)
- Yellow (39%)
- Black (36%)



- Cyan (36%)
- Magenta (50%)
- Yellow (61%)

Brightness & Saturation Gradients

These gradients show how the Decimal color 10715236 changes by changing the brightness by 10 percent. The first figure shows a shift by +10% for each color and the second figure -10%.

Similar to the brightness gradients but the following saturation gradients show a change of the Decimal color 10715236 by changing the saturation by 10% instead.

 10715236

 10715236

16777215

 8939340

 14398871

 7229237

 16306354

 5519391

 16772557

 3940873

 16777194

 2428416

 0

 10715236

 10715236

 10712916

 10717556

 10710595

 10719877

■ 10708275

■ 10722197

■ 10705955

■ 10724517

■ 10703635

■ 10726837

■ 10701314

■ 10729158

■ 10700800

■ 10731478

■ 10733798

■ 10736119

Harmonies

Analogous

The Analogous color harmony consists of three colors that are next to each other on the color wheel.



11369329



10715236



9602912

Triad

The Triadic color harmony groups three colors that are evenly spaced from another and form a triangle on the color wheel.



10715236



5477001



9339303

Complementary

The Complementary color scheme is a pair of colors which are on the opposite of each other on the color wheel.



10715236



6588323

Split Complementary

Split-complementary colors differ from the complementary color scheme. The scheme consists of three colors, the original color and two neighbors of the complement color.



7571629



10715236



5018012

Square

The Square scheme is like the rectangle color scheme, but the four colors are evenly spaced on the color wheel.



10715236



6721654



5868970



10714008

Rectangle

The Rectangle color scheme consists of four colors that form a rectangle on the color wheel.



10715236



8686435



5868970



8749994

Sweetspot

The Sweet Spot groups the original color and five complimentary colors.



10715236



13944506



10708104



7037788



15461355



7039851

Same Dimension

The Same Dimension uses a secret algorithm to generate beautiful new colors.



10715236



13934194



10723172



5393737



9519360



1181696

Inverse Universe

The Inverse Universe completely reimagines the original color for something new.



6588323



7514324



6580387



4804178



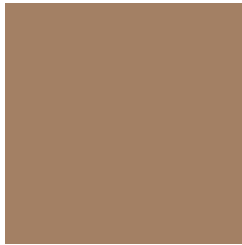
20881



2578

Previews

White Background



This preview shows how the Decimal color 10715236 looks on a white background.

Color Contrast Check

Large Text (above 18pt) WCAG AA ✓ Pass

Any Text WCAG AA × Fail

Large Text (above 18pt) WCAG AAA × Fail

Any Text WCAG AAA × Fail

Black Background



This preview shows how the Decimal color 10715236 looks on a black background.

Color Contrast Check

Large Text (above 18pt) WCAG AA ✓ Pass

Any Text WCAG AA ✓ Pass

Large Text (above 18pt) WCAG AAA ✓ Pass

Any Text WCAG AAA × Fail

If you want to check with other color combinations, try the [Color Contrast Checker](#).

Decimal 10715236 Background



This preview shows how black text looks on a background with the Decimal color 10715236.



This preview shows how white text looks on a background with the Decimal color 10715236.

Color Blindness Simulation

Color vision deficiency is a very complex topic, and I could not describe the different causes any better than Wikipedia does, so if you want to learn more, you should check out their [article about color blindness](#).


Dichromacy



Original Color
10715236

Protanopia
9471847

Deuteranopia
10518884



Tritanopia
10910853

Trichromacy



Original Color
10715236

Protanomaly
9929830

Deuteranomaly
10584420

Tritanomaly
10845561

Monochromacy



Original Color
10715236

Achromatopsia
8882055

Achromatomaly
9536634

CSS Examples

Text

The CSS property to change the color of the text to Decimal 10715236 is called "color". The color property can be set on classes, ids or directly on the HTML element.

This example shows how text in the color #A38064 looks like.

```
.text, #text, p{  
    color:#A38064  
}
```

If you want to add a text shadow in that color use the text-shadow property, you can generate a text shadow directly with our [CSS Text Shadow Generator](#).

Here you see how black text with a 4 pixel #A38064 colored shadow looks like.

```
.shadow{ text-shadow: 4px 4px 2px #A38064
}
```

Border

The CSS property to change the border of an element to Decimal 10715236 is called "border". The border property can be set on classes, ids or directly on the HTML element.

This example shows the color as border, it can be applied via the CSS property "border" or "border-color".

```
.border, #border, table{ border:4px solid
#A38064 }
```

If only the border color should be changed use the property `border-color`.

```
.border{ border-color:#A38064 }
```

If you want to add a box shadow in that color use:

Here you see how a box with a 4 pixel #A38064 colored shadow looks like.

```
.boxshadow{ -moz-box-shadow:4px 4px 4px  
4px #A38064; -webkit-box-shadow:4px 4px  
4px 4px #A38064; box-shadow:4px 4px 4px  
4px #A38064 }
```

Background

The CSS property to change the background color of an element to Decimal 10715236 is called "background". The background property can be set on classes, ids or directly on the HTML element.

```
.background, #background, body{  
background:#A38064 }
```

If only the background color should be changed can be used:

```
.background{ background-color:#A38064 }
```

This example shows the color as background, it is applied via the CSS property "background".

To optimize and compress your CSS code, you can use our [online CSS compressor and optimizer](#) based on csstidy. If you want to create a linear or radial gradient as background or border, check our [CSS Gradient Generator](#).

Hey! You found this booklet interesting? Support Converting Colors with the new Membership Option!

The pro membership hides all ads, plus gives you double the colors in the color bucket, and more awesome pro features!

[Learn more, Memberships starting at \\$2.50/m!](#)

**Follow me
on Twitter!**

@ConvertingColor