

Converting Colors

Decimal(10783364)

Have a look what the booklet for
Decimal(10783364) contains.

Decimal(10783364)	3
<i>Conversions</i>	4
<i>Details</i>	6
<i>Harmonies</i>	11
<i>Previews</i>	23
<i>Color Blindness Simulation</i>	26
<i>CSS Examples</i>	29

Color

Decimal(10783364)

Conversions

Conversions Part 1

Format	Color
Hex	A48A84
RGB	164, 138, 132
RGB Percent	64%, 54%, 52%
CMY	0.3569, 0.4588, 0.4824
CMYK	0.00, 0.16, 0.20, 0.36
HSL	11°, 15%, 58%
HSV	11°, 20%, 64%
XYZ	28.5632, 27.7354, 25.6778
YIQ	145.0900, 17.4220, 3.6460

Conversions

Conversions Part 2

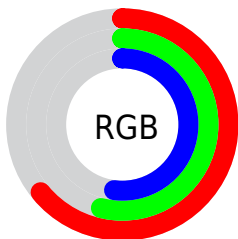
Format	Color
R_{YB}	164, 139, 132
Decimal	10783364
CIE _{Lab}	59.65, 8.84, 6.86
CIE _{LCh}	60, 11.188, 37.843
Yxy	27.7354, 0.3484, 0.3383
Android (android.graphics.Color)	4288973444 (0xFFA48A84)
YUV	145.0900, -6.4534, 16.5841
Hunter-Lab	52.6644, 4.6489, 7.9568

Details

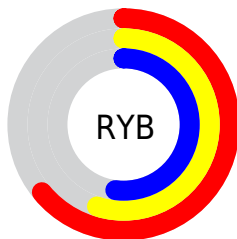
The Decimal color **10783364** is a dark color, and the websafe version is hex **999999**. A complement of this color would be **8691364**, and the grayscale version is **9539985**.

A 20% lighter version of the original color is **14401465**, and **7362643** is the 20% darker color. If you saturate the color by 10%, you get **10780020**, and if you desaturate by 10%, it is **10786708**.

Distribution



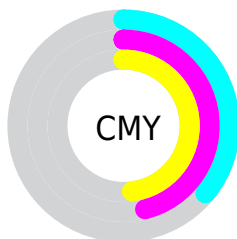
- Red (64%)
- Green (54%)
- Blue (52%)



- Red (64%)
- Yellow (55%)
- Blue (52%)



- Cyan (0%)
- Magenta (16%)
- Yellow (20%)
- Black (36%)



- Cyan (36%)
- Magenta (46%)
- Yellow (48%)

Brightness & Saturation Gradients

These gradients show how the Decimal color 10783364 changes by changing the brightness by 10 percent. The first figure shows a shift by +10% for each color and the second figure -10%.

Similar to the brightness gradients but the following saturation gradients show a change of the Decimal color 10783364 by changing the saturation by 10% instead.

 10783364

 10783364

16777215

 9007467

 14401465

 7362643

 16309205

 5718332

 16775409

 4139814

 2692625

 1114112

 0

 10783364

 10783364

 10780020

 10786708

 10776419

 10790309

 10773075

 10793653

 10769730

 10796998

 10766130

 10800598

 10762786

 10803942

 10759441

 10807287

 10755841

 10810879

 10755840

 10813439

Harmonies

Analogous

The Analogous color harmony consists of three colors that are next to each other on the color wheel.



10783117



10783364



10390910

Triad

The Triadic color harmony groups three colors that are evenly spaced from another and form a triangle on the color wheel.



10783364



8361352



8949923

Complementary

The Complementary color scheme is a pair of colors which are on the opposite of each other on the color wheel.



10783364



8691364

Split Complementary

Split-complementary colors differ from the complementary color scheme. The scheme consists of three colors, the original color and two neighbors of the complement color.



8229794



10783364



7902866

Square

The Square scheme is like the rectangle color scheme, but the four colors are evenly spaced on the color wheel.



10783364



9081728



7837083



9800863

Rectangle

The Rectangle color scheme consists of four colors that form a rectangle on the color wheel.



10783364



9998204



7837083



8688035

Sweetspot

The Sweet Spot groups the original color and five complimentary colors.



10783364



14077129



10781854



7038308



15461355



7039851

Same Dimension

The Same Dimension uses a secret algorithm to generate beautiful new colors.



10783364



14069413



10787460



5393225



9509632



1180416

Inverse Universe

The Inverse Universe completely reimagines the original color for something new.



8691364



10866134



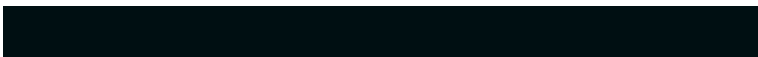
8687268



4804690



30353



3858

Previews

White Background



This preview shows how the Decimal color 10783364 looks on a white background.

Color Contrast Check

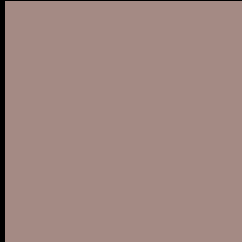
Large Text (above 18pt) WCAG AA ✓ Pass

Any Text WCAG AA × Fail

Large Text (above 18pt) WCAG AAA × Fail

Any Text WCAG AAA × Fail

Black Background



This preview shows how the Decimal color 10783364 looks on a black background.

Color Contrast Check

Large Text (above 18pt) WCAG AA ✓ Pass

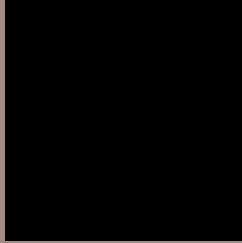
Any Text WCAG AA ✓ Pass

Large Text (above 18pt) WCAG AAA ✓ Pass

Any Text WCAG AAA × Fail

If you want to check with other color combinations, try the [Color Contrast Checker](#).

Decimal 10783364 Background



This preview shows how black text looks on a background with the Decimal color 10783364.



This preview shows how white text looks on a background with the Decimal color 10783364.

Color Blindness Simulation

Color vision deficiency is a very complex topic, and I could not describe the different causes any better than Wikipedia does, so if you want to learn more, you should check out their [article about color blindness](#).

Dichromacy



Original Color


10783364

Protanopia

9736071

Deuteranopia

10652548



Tritanopia
10913938

Trichromacy



Original Color
10783364

Protanomaly
10128774

Deuteranomaly
10718084

Tritanomaly
10848653

Monochromacy



Original Color
10783364

Achromatopsia
9539985

Achromatomaly
9997964

CSS Examples

Text

The CSS property to change the color of the text to Decimal 10783364 is called "color". The color property can be set on classes, ids or directly on the HTML element.

This example shows how text in the color #A48A84 looks like.

```
.text, #text, p{  
    color:#A48A84  
}
```

If you want to add a text shadow in that color use the text-shadow property, you can generate a text shadow directly with our [CSS Text Shadow Generator](#).

Here you see how black text with a 4 pixel #A48A84 colored shadow looks like.

```
.shadow{ text-shadow: 4px 4px 2px #A48A84
}
```

Border

The CSS property to change the border of an element to Decimal 10783364 is called "border". The border property can be set on classes, ids or directly on the HTML element.

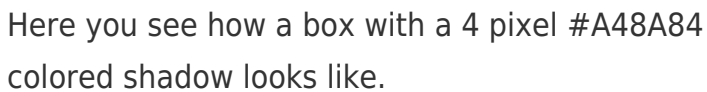
This example shows the color as border, it can be applied via the CSS property "border" or "border-color".

```
.border, #border, table{ border:4px solid
#A48A84 }
```

If only the border color should be changed use the property `border-color`.

```
.border{ border-color:#A48A84 }
```

If you want to add a box shadow in that color use:



Here you see how a box with a 4 pixel #A48A84 colored shadow looks like.

```
.boxshadow{ -moz-box-shadow:4px 4px 4px  
4px #A48A84; -webkit-box-shadow:4px 4px  
4px 4px #A48A84; box-shadow:4px 4px 4px  
4px #A48A84 }
```

Background

The CSS property to change the background color of an element to Decimal 10783364 is called "background". The background property can be set on classes, ids or directly on the HTML element.

```
.background, #background, body{  
background:#A48A84 }
```

If only the background color should be changed can be used:

```
.background{ background-color:#A48A84 }
```

This example shows the color as background, it is applied via the CSS property "background".

To optimize and compress your CSS code, you can use our [online CSS compressor and optimizer](#) based on csstidy. If you want to create a linear or radial gradient as background or border, check our [CSS Gradient Generator](#).

Hey! You found this booklet interesting? Support Converting Colors with the new Membership Option!

The pro membership hides all ads, plus gives you double the colors in the color bucket, and more awesome pro features!

[Learn more, Memberships starting at \\$2.50/m!](#)

**Follow me
on Twitter!**

@ConvertingColor