

Converting Colors

Decimal(10848106)

Have a look what the booklet for
Decimal(10848106) contains.

Decimal(10848106)	3
<i>Conversions</i>	4
<i>Details</i>	6
<i>Harmonies</i>	11
<i>Previews</i>	23
<i>Color Blindness Simulation</i>	26
<i>CSS Examples</i>	29

Color

Decimal(10848106)

Conversions

Conversions Part 1

Format	Color
Hex	A5876A
RGB	165, 135, 106
RGB Percent	65%, 53%, 42%
CMY	0.3529, 0.4706, 0.5843
CMYK	0.00, 0.18, 0.36, 0.35
HSL	29°, 25%, 53%
HSV	29°, 36%, 65%
XYZ	26.7825, 26.3679, 17.3136
YIQ	140.6640, 27.1890, -2.6590

Conversions

Conversions Part 2

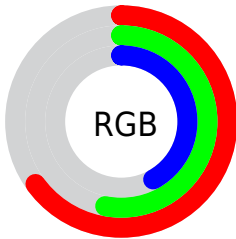
Format	Color
R_{YB}	165, 163, 106
Decimal	10848106
CIE _{Lab}	58.38, 7.18, 19.90
CIE _{LCh}	58, 21.151, 70.168
Yxy	26.3679, 0.3801, 0.3742
Android (android.graphics.Color)	4289038186 (0xFFA5876A)
YUV	140.6640, -17.0894, 21.3427
Hunter-Lab	51.3497, 3.2387, 15.9539

Details

The Decimal color **10848106** is a dark color, and the websafe version is hex **999966**. A complement of this color would be **6981797**, and the grayscale version is **9276813**.

A 20% lighter version of the original color is **14531741**, and **7361850** is the 20% darker color. If you saturate the color by 10%, you get **10846042**, and if you desaturate by 10%, it is **10850170**.

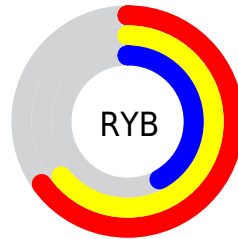
Distribution



Red (65%)

Green (53%)

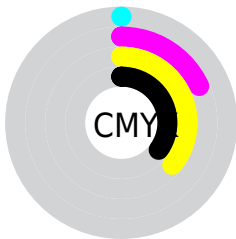
Blue (42%)



Red (65%)

Yellow (64%)

Blue (42%)

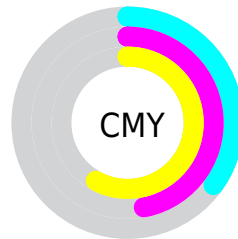


Cyan (0%)

Magenta (18%)

Yellow (36%)

Black (35%)



Cyan (35%)

Magenta (47%)

Yellow (58%)

Brightness & Saturation Gradients

These gradients show how the Decimal color 10848106 changes by changing the brightness by 10 percent. The first figure shows a shift by +10% for each color and the second figure -10%.

Similar to the brightness gradients but the following saturation gradients show a change of the Decimal color 10848106 by changing the saturation by 10% instead.

 10848106

 10848106

16777215

 9072210

 14531741

 7361850

 16439480

 5717540

 16774356

 4073488

 16777201

 2561024

 65536

 0

 10848106

 10848106

 10846042

 10850170

■ 10843721

■ 10852491

■ 10841657

■ 10854555

■ 10839336

■ 10856876

■ 10837272

■ 10858940

■ 10835207

■ 10861005

■ 10834176

■ 10863325

■ 10865390

■ 10867710

Harmonies

Analogous

The Analogous color harmony consists of three colors that are next to each other on the color wheel.



11567733



10848106



9735528

Triad

The Triadic color harmony groups three colors that are evenly spaced from another and form a triangle on the color wheel.



10848106



5937042



9930153

Complementary

The Complementary color scheme is a pair of colors which are on the opposite of each other on the color wheel.



10848106



6981797

Split Complementary

Split-complementary colors differ from the complementary color scheme. The scheme consists of three colors, the original color and two neighbors of the complement color.



8359089



10848106



5740196

Square

The Square scheme is like the rectangle color scheme, but the four colors are evenly spaced on the color wheel.



10848106



6985343



6722223



11108761

Rectangle

The Rectangle color scheme consists of four colors that form a rectangle on the color wheel.



10848106



8819052



6722223



9472172

Sweetspot

The Sweet Spot groups the original color and five complimentary colors.



10848106



14076607



10840712



7038045



15461355



7039851

Same Dimension

The Same Dimension uses a secret algorithm to generate beautiful new colors.



10848106



14067578



10855530



5393737



9520896



1181952

Inverse Universe

The Inverse Universe completely reimagines the original color for something new.



6981797



8038870



6974373



4804178



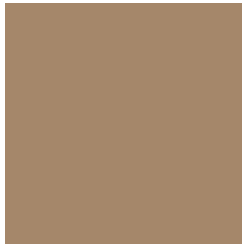
19089



2322

Previews

White Background



This preview shows how the Decimal color 10848106 looks on a white background.

Color Contrast Check

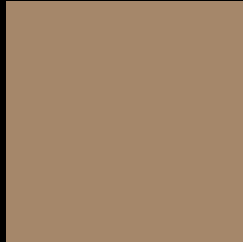
Large Text (above 18pt) WCAG AA ✓ Pass

Any Text WCAG AA × Fail

Large Text (above 18pt) WCAG AAA × Fail

Any Text WCAG AAA × Fail

Black Background



This preview shows how the Decimal color 10848106 looks on a black background.

Color Contrast Check

Large Text (above 18pt) WCAG AA ✓ Pass

Any Text WCAG AA ✓ Pass

Large Text (above 18pt) WCAG AAA ✓ Pass

Any Text WCAG AAA × Fail

If you want to check with other color combinations, try the [Color Contrast Checker](#).

Decimal 10848106 Background



This preview shows how black text looks on a background with the Decimal color 10848106.



This preview shows how white text looks on a background with the Decimal color 10848106.

Color Blindness Simulation

Color vision deficiency is a very complex topic, and I could not describe the different causes any better than Wikipedia does, so if you want to learn more, you should check out their [article about color blindness](#).


Dichromacy



Original Color
10848106

Protanopia
9866348

Deuteranopia
10913642



Tritanopia
11109004

Trichromacy



Original Color
10848106

Protanomaly
10193515

Deuteranomaly
10913642

Tritanomaly
11043968

Monochromacy



Original Color
10848106

Achromatopsia
9276813

Achromatomaly
9866112

CSS Examples

Text

The CSS property to change the color of the text to Decimal 10848106 is called "color". The color property can be set on classes, ids or directly on the HTML element.

This example shows how text in the color #A5876A looks like.

```
.text, #text, p{  
    color:#A5876A  
}
```

If you want to add a text shadow in that color use the text-shadow property, you can generate a text shadow directly with our [CSS Text Shadow Generator](#).

Here you see how black text with a 4 pixel #A5876A colored shadow looks like.

```
.shadow{ text-shadow: 4px 4px 2px #A5876A
}
```

Border

The CSS property to change the border of an element to Decimal 10848106 is called "border". The border property can be set on classes, ids or directly on the HTML element.

This example shows the color as border, it can be applied via the CSS property "border" or "border-color".

```
.border, #border, table{ border:4px solid
#A5876A }
```

If only the border color should be changed use the property `border-color`.

```
.border{ border-color:#A5876A }
```

If you want to add a box shadow in that color use:

Here you see how a box with a 4 pixel #A5876A colored shadow looks like.

```
.boxshadow{ -moz-box-shadow:4px 4px 4px  
4px #A5876A; -webkit-box-shadow:4px 4px  
4px 4px #A5876A; box-shadow:4px 4px 4px  
4px #A5876A }
```

Background

The CSS property to change the background color of an element to Decimal 10848106 is called "background". The background property can be set on classes, ids or directly on the HTML element.

```
.background, #background, body{  
background:#A5876A }
```

If only the background color should be changed can be used:

```
.background{ background-color:#A5876A }
```

This example shows the color as background, it is applied via the CSS property "background".

To optimize and compress your CSS code, you can use our [online CSS compressor and optimizer](#) based on csstidy. If you want to create a linear or radial gradient as background or border, check our [CSS Gradient Generator](#).

Hey! You found this booklet interesting? Support Converting Colors with the new Membership Option!

The pro membership hides all ads, plus gives you double the colors in the color bucket, and more awesome pro features!

[Learn more, Memberships starting at \\$2.50/m!](#)

**Follow me
on Twitter!**

@ConvertingColor