

Converting Colors

Decimal(10894673)

Have a look what the booklet for
Decimal(10894673) contains.

Decimal(10894673)	3
<i>Conversions</i>	4
<i>Details</i>	6
<i>Harmonies</i>	11
<i>Previews</i>	23
<i>Color Blindness Simulation</i>	26
<i>CSS Examples</i>	29

Color

Decimal(10894673)

Conversions

Conversions Part 1

Format	Color
Hex	A63D51
RGB	166, 61, 81
RGB Percent	65%, 24%, 32%
CMY	0.3490, 0.7608, 0.6824
CMYK	0.00, 0.63, 0.51, 0.35
HSL	349°, 46%, 45%
HSV	349°, 63%, 65%
XYZ	18.8798, 12.0386, 9.1132
YIQ	94.6750, 56.1600, 28.4800

Conversions

Conversions Part 2

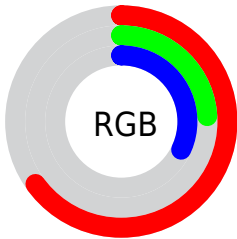
Format	Color
R_{YB}	166, 61, 81
Decimal	10894673
CIE _{Lab}	41.28, 44.85, 11.27
CIE _{LCh}	41, 46.245, 14.104
Yxy	12.0386, 0.4716, 0.3007
Android (android.graphics.Color)	4289084753 (0xFFA63D51)
YUV	94.6750, -6.7418, 62.5520
Hunter-Lab	34.6966, 36.4099, 8.7149

Details

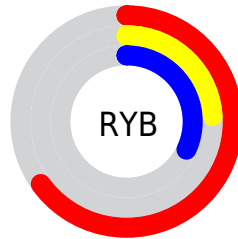
The Decimal color **10894673** is a dark color, and the websafe version is hex **993333**. A complement of this color would be **4040338**, and the grayscale version is **6250335**.

A 20% lighter version of the original color is **14774914**, and **7143461** is the 20% darker color. If you saturate the color by 10%, you get **10890308**, and if you desaturate by 10%, it is **10899038**.

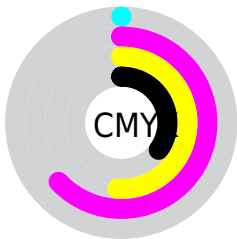
Distribution



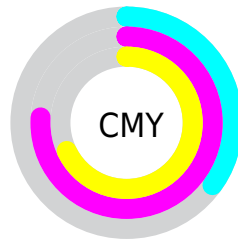
- Red (65%)
- Green (24%)
- Blue (32%)



- Red (65%)
- Yellow (24%)
- Blue (32%)



- Cyan (0%)
- Magenta (63%)
- Yellow (51%)
- Black (35%)



- Cyan (35%)
- Magenta (76%)
- Yellow (68%)

Brightness & Saturation Gradients

These gradients show how the Decimal color 10894673 changes by changing the brightness by 10 percent. The first figure shows a shift by +10% for each color and the second figure -10%.

Similar to the brightness gradients but the following saturation gradients show a change of the Decimal color 10894673 by changing the saturation by 10% instead.

 10894673

 10894673

16777215

 8987194

 14774914

 7143461

 16747676

 5308432

 16754871

 3670017

 16762066

 1114112

 16769519

 0

16776959

 10894673

 10894673

 10890308

 10899038

 10886198

 10903148

 10881833

 10907513

 10879008

 10911623

 10915988

 10920354

 10924463

 10928829

 10932938

Harmonies

Analogous

The Analogous color harmony consists of three colors that are next to each other on the color wheel.



10240119



10894673



10307630

Triad

The Triadic color harmony groups three colors that are evenly spaced from another and form a triangle on the color wheel.



10894673



3698215



27562

Complementary

The Complementary color scheme is a pair of colors which are on the opposite of each other on the color wheel.



10894673



4040338

Split Complementary

Split-complementary colors differ from the complementary color scheme. The scheme consists of three colors, the original color and two neighbors of the complement color.



29077



10894673



29259

Square

The Square scheme is like the rectangle color scheme, but the four colors are evenly spaced on the color wheel.



10894673



6579468



29555



3629227

Rectangle

The Rectangle color scheme consists of four colors that form a rectangle on the color wheel.



10894673



9327386



29555



28325

Sweetspot

The Sweet Spot groups the original color and five complimentary colors.



10894673



14266551



9518502



7230553



15592941



7237230

Same Dimension

The Same Dimension uses a secret algorithm to generate beautiful new colors.



10894673



14234707



10902845



5524557



9699356



1310724

Inverse Universe

The Inverse Universe completely reimagines the original color for something new.



10894673



14234707



4032166



5524557



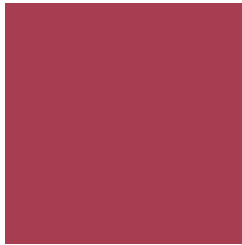
9699356



1310724

Previews

White Background



This preview shows how the Decimal color 10894673 looks on a white background.

Color Contrast Check

Large Text (above 18pt) WCAG AA ✓ Pass

Any Text WCAG AA ✓ Pass

Large Text (above 18pt) WCAG AAA ✓ Pass

Any Text WCAG AAA × Fail

Black Background



This preview shows how the Decimal color 10894673 looks on a black background.

Color Contrast Check

Large Text (above 18pt) WCAG AA ✓ Pass

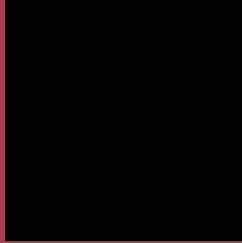
Any Text WCAG AA × Fail

Large Text (above 18pt) WCAG AAA × Fail

Any Text WCAG AAA × Fail

If you want to check with other color combinations, try the [Color Contrast Checker](#).

Decimal 10894673 Background



This preview shows how black text looks on a background with the Decimal color 10894673.



This preview shows how white text looks on a background with the Decimal color 10894673.

Color Blindness Simulation

Color vision deficiency is a very complex topic, and I could not describe the different causes any better than Wikipedia does, so if you want to learn more, you should check out their [article about color blindness](#).

Dichromacy



Trichromacy



Original Color
10894673

Protanomaly
8082781

Deuteranomaly
8802894

Tritanomaly
10829640

Monochromacy



Original Color
10894673

Achromatopsia
6250335

Achromatomaly
7951194

CSS Examples

Text

The CSS property to change the color of the text to Decimal 10894673 is called "color". The color property can be set on classes, ids or directly on the HTML element.

This example shows how text in the color #A63D51 looks like.

```
.text, #text, p{  
    color:#A63D51  
}
```

If you want to add a text shadow in that color use the text-shadow property, you can generate a text shadow directly with our [CSS Text Shadow Generator](#).

Here you see how black text with a 4 pixel #A63D51 colored shadow looks like.

```
.shadow{ text-shadow: 4px 4px 2px #A63D51
}
```

Border

The CSS property to change the border of an element to Decimal 10894673 is called "border". The border property can be set on classes, ids or directly on the HTML element.

This example shows the color as border, it can be applied via the CSS property "border" or "border-color".

```
.border, #border, table{ border:4px solid
#A63D51 }
```

If only the border color should be changed use the property `border-color`.

```
.border{ border-color:#A63D51 }
```

If you want to add a box shadow in that color use:

Here you see how a box with a 4 pixel #A63D51 colored shadow looks like.

```
.boxshadow{ -moz-box-shadow:4px 4px 4px  
4px #A63D51; -webkit-box-shadow:4px 4px  
4px 4px #A63D51; box-shadow:4px 4px 4px  
4px #A63D51 }
```

Background

The CSS property to change the background color of an element to Decimal 10894673 is called "background". The background property can be set on classes, ids or directly on the HTML element.

```
.background, #background, body{  
background:#A63D51 }
```

If only the background color should be changed can be used:

```
.background{ background-color:#A63D51 }
```

This example shows the color as background, it is applied via the CSS property "background".

To optimize and compress your CSS code, you can use our [online CSS compressor and optimizer](#) based on csstidy. If you want to create a linear or radial gradient as background or border, check our [CSS Gradient Generator](#).

Hey! You found this booklet interesting? Support Converting Colors with the new Membership Option!

The pro membership hides all ads, plus gives you double the colors in the color bucket, and more awesome pro features!

[Learn more, Memberships starting at \\$2.50/m!](#)

**Follow me
on Twitter!**

@ConvertingColor