

Converting Colors

Decimal(10914670)

Have a look what the booklet for
Decimal(10914670) contains.

Decimal(10914670)	3
<i>Conversions</i>	4
<i>Details</i>	6
<i>Harmonies</i>	11
<i>Previews</i>	23
<i>Color Blindness Simulation</i>	26
<i>CSS Examples</i>	29

Color

Decimal(10914670)

Conversions

Conversions Part 1

Format	Color
Hex	A68B6E
RGB	166, 139, 110
RGB Percent	65%, 55%, 43%
CMY	0.3490, 0.4549, 0.5686
CMYK	0.00, 0.16, 0.34, 0.35
HSL	31°, 24%, 54%
HSV	31°, 34%, 65%
XYZ	27.7730, 27.6980, 18.6343
YIQ	143.7670, 25.4010, -3.2950

Conversions

Conversions Part 2

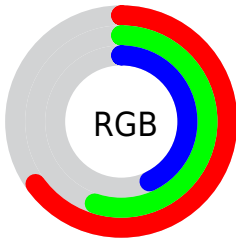
Format	Color
RYB	162, 166, 110
Decimal	10914670
CIELab	59.61, 5.86, 19.33
CIELCh	60, 20.200, 73.123
Yxy	27.6980, 0.3748, 0.3738
Android (android.graphics.Color)	4289104750 (0xFFA68B6E)
YUV	143.7670, -16.6471, 19.4983
Hunter-Lab	52.6289, 2.0962, 15.8474

Details

The Decimal color **10914670** is a dark color, and the websafe version is hex **999966**. A complement of this color would be **7244198**, and the grayscale version is **9474192**.

A 20% lighter version of the original color is **14598306**, and **7428414** is the 20% darker color. If you saturate the color by 10%, you get **10912605**, and if you desaturate by 10%, it is **10916735**.

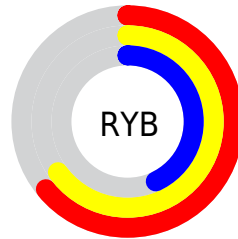
Distribution



Red (65%)

Green (55%)

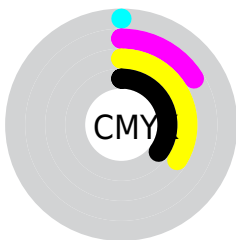
Blue (43%)



Red (64%)

Yellow (65%)

Blue (43%)

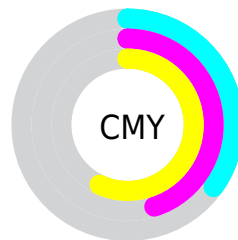


Cyan (0%)

Magenta (16%)

Yellow (34%)

Black (35%)



Cyan (35%)

Magenta (45%)

Yellow (57%)

Brightness & Saturation Gradients

These gradients show how the Decimal color 10914670 changes by changing the brightness by 10 percent. The first figure shows a shift by +10% for each color and the second figure -10%.

Similar to the brightness gradients but the following saturation gradients show a change of the Decimal color 10914670 by changing the saturation by 10% instead.



10914670



10914670

16777215



9138774



14598306



7428414



16506045



5784104



16775641



4140051



16777205



2692864



720896



0



10914670



10914670



10912605



10916735

■ 10910541

■ 10918799

■ 10908476

■ 10920864

■ 10906412

■ 10922928

■ 10904347

■ 10924993

■ 10902282

■ 10927058

■ 10900992

■ 10929122

■ 10931187

■ 10933247

Harmonies

Analogous

The Analogous color harmony consists of three colors that are next to each other on the color wheel.



11634296



10914670



9802093

Triad

The Triadic color harmony groups three colors that are evenly spaced from another and form a triangle on the color wheel.



10914670



6265495



10258602

Complementary

The Complementary color scheme is a pair of colors which are on the opposite of each other on the color wheel.



10914670



7244198

Split Complementary

Split-complementary colors differ from the complementary color scheme. The scheme consists of three colors, the original color and two neighbors of the complement color.



8753074



10914670



6264999

Square

The Square scheme is like the rectangle color scheme, but the four colors are evenly spaced on the color wheel.



10914670



7182725



7247025



11371674

Rectangle

The Rectangle color scheme consists of four colors that form a rectangle on the color wheel.



10914670



8950898



7247025



9800365

Sweetspot

The Sweet Spot groups the original color and five complimentary colors.



10914670



14274243



10907273



7235424



15592941



7237230

Same Dimension

The Same Dimension uses a secret algorithm to generate beautiful new colors.



10914670



14266242



10856046



5525580



9719040



1313536

Inverse Universe

The Inverse Universe completely reimagines the original color for something new.



7244198



8563929



7302822



5001300



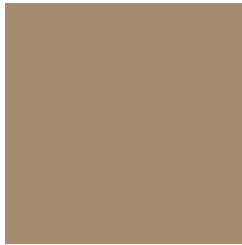
18324



2580

Previews

White Background



This preview shows how the Decimal color 10914670 looks on a white background.

Color Contrast Check

Large Text (above 18pt) WCAG AA ✓ Pass

Any Text WCAG AA × Fail

Large Text (above 18pt) WCAG AAA × Fail

Any Text WCAG AAA × Fail

Black Background



This preview shows how the Decimal color 10914670 looks on a black background.

Color Contrast Check

Large Text (above 18pt) WCAG AA ✓ Pass

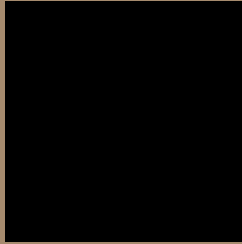
Any Text WCAG AA ✓ Pass

Large Text (above 18pt) WCAG AAA ✓ Pass

Any Text WCAG AAA × Fail

If you want to check with other color combinations, try the [Color Contrast Checker](#).

Decimal 10914670 Background



This preview shows how black text looks on a background with the Decimal color 10914670.



This preview shows how white text looks on a background with the Decimal color 10914670.

Color Blindness Simulation

Color vision deficiency is a very complex topic, and I could not describe the different causes any better than Wikipedia does, so if you want to learn more, you should check out their [article about color blindness](#).


Dichromacy



Original Color
10914670

Protanopia
10063984

Deuteranopia
11111022



Tritanopia
11175569

Trichromacy



Original Color
10914670

Protanomaly
10391151

Deuteranomaly
11045486

Tritanomaly
11110532

Monochromacy



Original Color
10914670

Achromatopsia
9474192

Achromatomaly
9997956

CSS Examples

Text

The CSS property to change the color of the text to Decimal 10914670 is called "color". The color property can be set on classes, ids or directly on the HTML element.

This example shows how text in the color #A68B6E looks like.

```
.text, #text, p{  
    color:#A68B6E  
}
```

If you want to add a text shadow in that color use the text-shadow property, you can generate a text shadow directly with our [CSS Text Shadow Generator](#).

Here you see how black text with a 4 pixel #A68B6E colored shadow looks like.

```
.shadow{ text-shadow: 4px 4px 2px #A68B6E
}
```

Border

The CSS property to change the border of an element to Decimal 10914670 is called "border". The border property can be set on classes, ids or directly on the HTML element.

This example shows the color as border, it can be applied via the CSS property "border" or "border-color".

```
.border, #border, table{ border:4px solid
#A68B6E }
```

If only the border color should be changed use the property `border-color`.

```
.border{ border-color:#A68B6E }
```

If you want to add a box shadow in that color use:

Here you see how a box with a 4 pixel #A68B6E colored shadow looks like.

```
.boxshadow{ -moz-box-shadow:4px 4px 4px  
4px #A68B6E; -webkit-box-shadow:4px 4px  
4px 4px #A68B6E; box-shadow:4px 4px 4px  
4px #A68B6E }
```

Background

The CSS property to change the background color of an element to Decimal 10914670 is called "background". The background property can be set on classes, ids or directly on the HTML element.

```
.background, #background, body{  
background:#A68B6E }
```

If only the background color should be changed can be used:

```
.background{ background-color:#A68B6E }
```

This example shows the color as background, it is applied via the CSS property "background".

To optimize and compress your CSS code, you can use our [online CSS compressor and optimizer](#) based on csstidy. If you want to create a linear or radial gradient as background or border, check our [CSS Gradient Generator](#).

Hey! You found this booklet interesting? Support Converting Colors with the new Membership Option!

The pro membership hides all ads, plus gives you double the colors in the color bucket, and more awesome pro features!

[Learn more, Memberships starting at \\$2.50/m!](#)

**Follow me
on Twitter!**

@ConvertingColor