

# Converting Colors

Decimal(10915468)

Have a look what the booklet for  
Decimal(10915468) contains.

<b>Decimal(10915468)</b> .....	3
<i><b>Conversions</b></i> .....	4
<i><b>Details</b></i> .....	6
<i><b>Harmonies</b></i> .....	11
<i><b>Previews</b></i> .....	23
<i><b>Color Blindness Simulation</b></i> .....	26
<i><b>CSS Examples</b></i> .....	29

# Color

**Decimal(10915468)**

# Conversions

## Conversions Part 1

<b>Format</b>	<b>Color</b>
Hex	A68E8C
RGB	166, 142, 140
RGB Percent	65%, 56%, 55%
CMY	0.3490, 0.4431, 0.4510
CMYK	0.00, 0.14, 0.16, 0.35
HSL	5°, 13%, 60%
HSV	5°, 16%, 65%
XYZ	30.1325, 29.3464, 28.8872
YIQ	148.9480, 14.9460, 4.4660

# Conversions

## Conversions Part 2

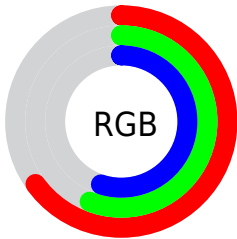
<b>Format</b>	<b>Color</b>
<b>R<sub>YB</sub></b>	166, 142, 140
Decimal	10915468
CIE <sub>Lab</sub>	61.09, 8.66, 4.39
CIE <sub>LCh</sub>	61, 9.716, 26.893
Yxy	29.3464, 0.3410, 0.3321
Android (android.graphics.Color)	4289105548 (0xFFA68E8C)
YUV	148.9480, -4.4114, 14.9546
Hunter-Lab	54.1724, 4.4862, 6.3045

# Details

The Decimal color **10915468** is a dark color, and the websafe version is hex **999999**. A complement of this color would be **9217190**, and the grayscale version is **9803157**.

A 20% lighter version of the original color is **14533826**, and **7494746** is the 20% darker color. If you saturate the color by 10%, you get **10911611**, and if you desaturate by 10%, it is **10919325**.

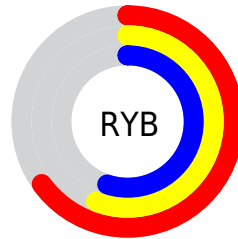
# Distribution



Red (65%)

Green (56%)

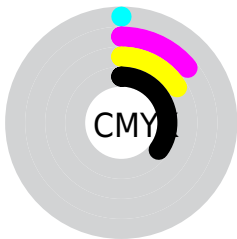
Blue (55%)



Red (65%)

Yellow (56%)

Blue (55%)

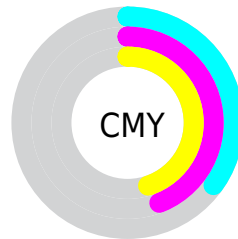


Cyan (0%)

Magenta (14%)

Yellow (16%)

Black (35%)



Cyan (35%)

Magenta (44%)

Yellow (45%)

# Brightness & Saturation Gradients

These gradients show how the Decimal color 10915468 changes by changing the brightness by 10 percent. The first figure shows a shift by +10% for each color and the second figure -10%.

Similar to the brightness gradients but the following saturation gradients show a change of the Decimal color 10915468 by changing the saturation by 10% instead.



 10915468

 10915468

16777215

 9139315

 14533826

 7494746

 16441565

 5850179

 16776442

 4271661

 2824472

 1507328

 0

 10915468

 10915468

 10911611

 10919325

 10907499

 10923437

 10903642

 10927294

 10899786

 10931150

 10895673

 10935263

 10891816

 10939120

 10887960

 10942975

 10883847

 10944511

 10882304

# Harmonies

## Analogous

The Analogous color harmony consists of three colors that are next to each other on the color wheel.



10784405



10915468



10719365

# Triad

The Triadic color harmony groups three colors that are evenly spaced from another and form a triangle on the color wheel.



10915468



8951690



9016484

# Complementary

The Complementary color scheme is a pair of colors which are on the opposite of each other on the color wheel.



10915468



9217190

# Split Complementary

Split-complementary colors differ from the complementary color scheme. The scheme consists of three colors, the original color and two neighbors of the complement color.



8492961



10915468



8493458

# Square

The Square scheme is like the rectangle color scheme, but the four colors are evenly spaced on the color wheel.



10915468



9606532



8296603



9736867

# Rectangle

The Rectangle color scheme consists of four colors that form a rectangle on the color wheel.



10915468



10392195



8296603



8820132



# Sweetspot

The Sweet Spot groups the original color and five complimentary colors.



10915468



14274510



10914980



7235687



15592941



7237230



# Same Dimension

The Same Dimension uses a secret algorithm to generate beautiful new colors.



10915468



14267312



10918796



5524556



9702144



1311232



# Inverse Universe

The Inverse Universe completely reimagines the original color for something new.



9217190



11589337



9213862



5002324



35220

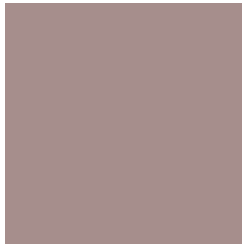


4884



# Previews

## White Background



This preview shows how the Decimal color 10915468 looks on a white background.

## Color Contrast Check

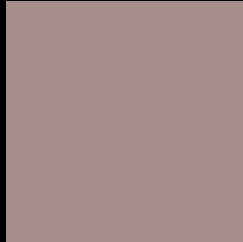
Large Text (above 18pt) WCAG AA ✓ Pass

Any Text WCAG AA × Fail

Large Text (above 18pt) WCAG AAA × Fail

Any Text WCAG AAA × Fail

# Black Background



This preview shows how the Decimal color 10915468 looks on a black background.

## Color Contrast Check

Large Text (above 18pt) WCAG AA ✓ Pass

Any Text WCAG AA ✓ Pass

Large Text (above 18pt) WCAG AAA ✓ Pass

Any Text WCAG AAA × Fail

If you want to check with other color combinations, try the [Color Contrast Checker](#).



## Decimal 10915468 Background



This preview shows how black text looks on a background with the Decimal color 10915468.



This preview shows how white text looks on a background with the Decimal color 10915468.

# Color Blindness Simulation

Color vision deficiency is a very complex topic, and I could not describe the different causes any better than Wikipedia does, so if you want to learn more, you should check out their [article about color blindness](#).

## Dichromacy





**Tritanopia**  
10980503

# Trichromacy



**Original Color**  
10915468

**Protanomaly**  
10260878

**Deuteranomaly**  
10850188

**Tritanomaly**  
10980755

# Monochromacy



**Original Color**  
10915468

**Achromatopsia**  
9803157

**Achromatomaly**  
10195602

# CSS Examples

## Text

The CSS property to change the color of the text to Decimal 10915468 is called "color". The color property can be set on classes, ids or directly on the HTML element.

This example shows how text in the color #A68E8C looks like.

```
.text, #text, p{  
    color:#A68E8C  
}
```

If you want to add a text shadow in that color use the text-shadow property, you can generate a text shadow directly with our [CSS Text Shadow Generator](#).

Here you see how black text with a 4 pixel #A68E8C colored shadow looks like.

```
.shadow{ text-shadow: 4px 4px 2px #A68E8C
}
```

## Border

The CSS property to change the border of an element to Decimal 10915468 is called "border". The border property can be set on classes, ids or directly on the HTML element.

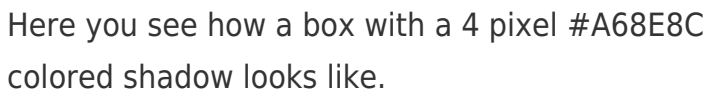
This example shows the color as border, it can be applied via the CSS property "border" or "border-color".

```
.border, #border, table{ border:4px solid
#A68E8C }
```

If only the border color should be changed use the property `border-color`.

```
.border{ border-color:#A68E8C }
```

If you want to add a box shadow in that color use:



Here you see how a box with a 4 pixel #A68E8C colored shadow looks like.

```
.boxshadow{ -moz-box-shadow:4px 4px 4px  
4px #A68E8C; -webkit-box-shadow:4px 4px  
4px 4px #A68E8C; box-shadow:4px 4px 4px  
4px #A68E8C }
```

# Background

The CSS property to change the background color of an element to Decimal 10915468 is called "background". The background property can be set on classes, ids or directly on the HTML element.

```
.background, #background, body{  
background:#A68E8C }
```

If only the background color should be changed can be used:

```
.background{ background-color:#A68E8C }
```

This example shows the color as background, it is applied via the CSS property "background".

To optimize and compress your CSS code, you can use our [online CSS compressor and optimizer](#) based on csstidy. If you want to create a linear or radial gradient as background or border, check our [CSS Gradient Generator](#).



Hey! You found this booklet interesting? Support Converting Colors with the new Membership Option!

The pro membership hides all ads, plus gives you double the colors in the color bucket, and more awesome pro features!

**[Learn more, Memberships starting at \\$2.50/m!](#)**

**Follow me  
on Twitter!**

@ConvertingColor