

# Converting Colors

Decimal(10973267)

Have a look what the booklet for  
Decimal(10973267) contains.

<b>Decimal(10973267)</b> .....	3
<i><b>Conversions</b></i> .....	4
<i><b>Details</b></i> .....	6
<i><b>Harmonies</b></i> .....	11
<i><b>Previews</b></i> .....	23
<i><b>Color Blindness Simulation</b></i> .....	26
<i><b>CSS Examples</b></i> .....	29

**Color**

**Decimal(10973267)**

# Conversions

## Conversions Part 1

<b>Format</b>	<b>Color</b>
Hex	A77053
RGB	167, 112, 83
RGB Percent	65%, 44%, 33%
CMY	0.3451, 0.5608, 0.6745
CMYK	0.00, 0.33, 0.50, 0.35
HSL	21°, 34%, 49%
HSV	21°, 50%, 65%
XYZ	23.2919, 20.4284, 10.8991
YIQ	125.1390, 42.0890, 2.6410

# Conversions

## Conversions Part 2

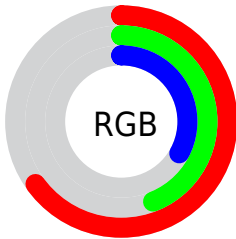
<b>Format</b>	<b>Color</b>
<b>R<sub>YB</sub></b>	167, 127, 83
Decimal	10973267
CIE <sub>Lab</sub>	52.32, 18.42, 24.93
CIE <sub>LCh</sub>	52, 30.992, 53.544
Yxy	20.4284, 0.4264, 0.3740
Android (android.graphics.Color)	4289163347 (0xFFA77053)
YUV	125.1390, -20.7745, 36.7121
Hunter-Lab	45.1977, 12.8907, 17.3411

# Details

The Decimal color **10973267** is a dark color, and the websafe version is hex **996633**. A complement of this color would be **5474983**, and the grayscale version is **8224125**.

A 20% lighter version of the original color is **14722181**, and **7356453** is the 20% darker color. If you saturate the color by 10%, you get **10970434**, and if you desaturate by 10%, it is **10976100**.

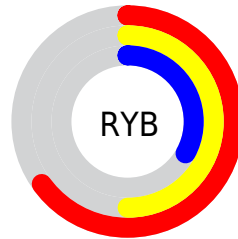
# Distribution



Red (65%)

Green (44%)

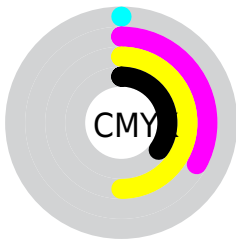
Blue (33%)



Red (65%)

Yellow (50%)

Blue (33%)

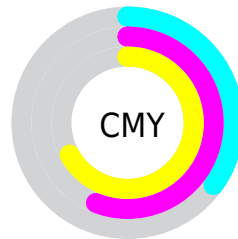


Cyan (0%)

Magenta (33%)

Yellow (50%)

Black (35%)



Cyan (35%)

Magenta (56%)

Yellow (67%)

# Brightness & Saturation Gradients

These gradients show how the Decimal color 10973267 changes by changing the brightness by 10 percent. The first figure shows a shift by +10% for each color and the second figure -10%.

Similar to the brightness gradients but the following saturation gradients show a change of the Decimal color 10973267 by changing the saturation by 10% instead.



 10973267       10973267

16777215       9131836

 14722181       7356453

 16695199       5646608

 16767930       4002816

 16775382       2424832

 16777202       0

 10973267       10973267

 10970434       10976100

 10967602       10978932

■ 10964769

■ 10981765

■ 10961936

■ 10984598

■ 10959360

■ 10987430

■ 10990263

■ 10993096

■ 10995673

■ 10998505

# Harmonies

## Analogous

The Analogous color harmony consists of three colors that are next to each other on the color wheel.



11561321



10973267



9664840

# Triad

The Triadic color harmony groups three colors that are evenly spaced from another and form a triangle on the color wheel.



10973267



3574646



7829677

# Complementary

The Complementary color scheme is a pair of colors which are on the opposite of each other on the color wheel.



10973267



5474983

# Split Complementary

Split-complementary colors differ from the complementary color scheme. The scheme consists of three colors, the original color and two neighbors of the complement color.



4948401



10973267



101265

# Square

The Square scheme is like the rectangle color scheme, but the four colors are evenly spaced on the color wheel.



10973267



5933148



1345703



10055325

# Rectangle

The Rectangle color scheme consists of four colors that form a rectangle on the color wheel.



10973267



8552264



1345703



6978480



# Sweetspot

The Sweet Spot groups the original color and five complimentary colors.



10973267



14271416



10965899



7233882



15592941



7237230



# Same Dimension

The Same Dimension uses a secret algorithm to generate beautiful new colors.



10973267



14255191



10983763



5525324



9712384



1312512



# Inverse Universe

The Inverse Universe completely reimagines the original color for something new.



5474983



5745881



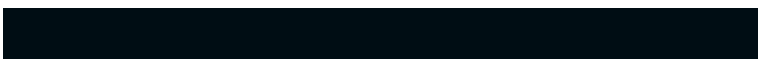
5464487



5001556



24980

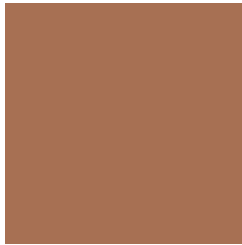


3348



# Previews

## White Background



This preview shows how the Decimal color 10973267 looks on a white background.

## Color Contrast Check

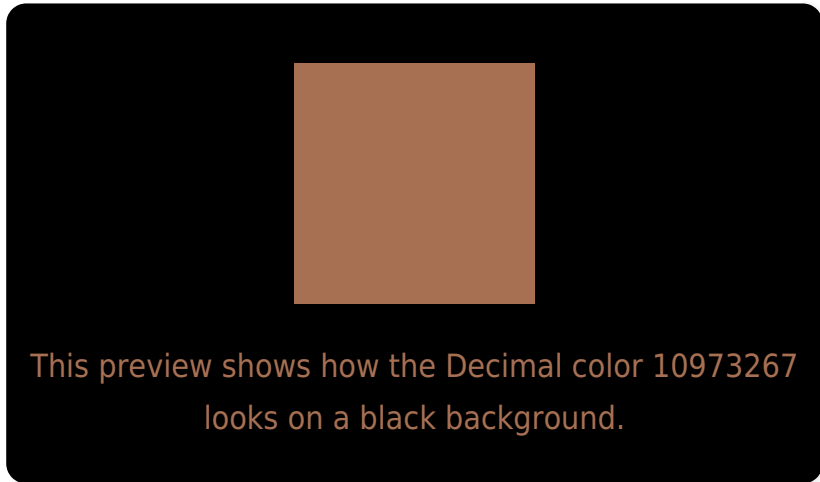
Large Text (above 18pt) WCAG AA ✓ Pass

Any Text WCAG AA × Fail

Large Text (above 18pt) WCAG AAA × Fail

Any Text WCAG AAA × Fail

# Black Background



## Color Contrast Check

Large Text (above 18pt) WCAG AA ✓ Pass

Any Text WCAG AA ✓ Pass

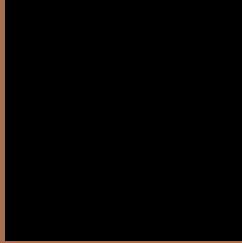
Large Text (above 18pt) WCAG AAA ✓ Pass

Any Text WCAG AAA × Fail

If you want to check with other color combinations, try the [Color Contrast Checker](#).



## Decimal 10973267 Background



This preview shows how black text looks on a background with the Decimal color 10973267.




This preview shows how white text looks on a background with the Decimal color 10973267.

# Color Blindness Simulation

Color vision deficiency is a very complex topic, and I could not describe the different causes any better than Wikipedia does, so if you want to learn more, you should check out their [article about color blindness](#).

## Dichromacy





**Tritanopia**  
11168884

# Trichromacy



**Original Color**  
10973267

**Protanomaly**  
9664598

**Deuteranomaly**  
10319186

**Tritanomaly**  
11103592

# Monochromacy



**Original Color**  
10973267

**Achromatopsia**  
8224125

**Achromatomaly**  
9205870

# CSS Examples

## Text

The CSS property to change the color of the text to Decimal 10973267 is called "color". The color property can be set on classes, ids or directly on the HTML element.

This example shows how text in the color #A77053 looks like.

```
.text, #text, p{  
    color:#A77053  
}
```

If you want to add a text shadow in that color use the text-shadow property, you can generate a text shadow directly with our [CSS Text Shadow Generator](#).

Here you see how black text with a 4 pixel #A77053 colored shadow looks like.

```
.shadow{ text-shadow: 4px 4px 2px #A77053
}
```

## Border

The CSS property to change the border of an element to Decimal 10973267 is called "border". The border property can be set on classes, ids or directly on the HTML element.

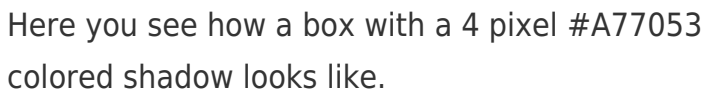
This example shows the color as border, it can be applied via the CSS property "border" or "border-color".

```
.border, #border, table{ border:4px solid
#A77053 }
```

If only the border color should be changed use the property `border-color`.

```
.border{ border-color:#A77053 }
```

If you want to add a box shadow in that color use:



Here you see how a box with a 4 pixel #A77053 colored shadow looks like.

```
.boxshadow{ -moz-box-shadow:4px 4px 4px  
4px #A77053; -webkit-box-shadow:4px 4px  
4px 4px #A77053; box-shadow:4px 4px 4px  
4px #A77053 }
```

# Background

The CSS property to change the background color of an element to Decimal 10973267 is called "background". The background property can be set on classes, ids or directly on the HTML element.

```
.background, #background, body{  
background:#A77053 }
```

If only the background color should be changed can be used:

```
.background{ background-color:#A77053 }
```

This example shows the color as background, it is applied via the CSS property "background".

To optimize and compress your CSS code, you can use our [online CSS compressor and optimizer](#) based on csstidy. If you want to create a linear or radial gradient as background or border, check our [CSS Gradient Generator](#).



Hey! You found this booklet interesting? Support Converting Colors with the new Membership Option!

The pro membership hides all ads, plus gives you double the colors in the color bucket, and more awesome pro features!

**[Learn more, Memberships starting at \\$2.50/m!](#)**

**Follow me  
on Twitter!**

@ConvertingColor