

# Converting Colors

Decimal(11041110)

Have a look what the booklet for  
Decimal(11041110) contains.

<b>Decimal(11041110)</b> .....	3
<i><b>Conversions</b></i> .....	4
<i><b>Details</b></i> .....	6
<i><b>Harmonies</b></i> .....	11
<i><b>Previews</b></i> .....	23
<i><b>Color Blindness Simulation</b></i> .....	26
<i><b>CSS Examples</b></i> .....	29

# Color

**Decimal(11041110)**

# Conversions

## Conversions Part 1

<b>Format</b>	<b>Color</b>
Hex	A87956
RGB	168, 121, 86
RGB Percent	66%, 47%, 34%
CMY	0.3412, 0.5255, 0.6627
CMYK	0.00, 0.28, 0.49, 0.34
HSL	26°, 32%, 50%
HSV	26°, 49%, 66%
XYZ	24.6655, 22.6715, 11.8801
YIQ	131.0630, 39.2470, -0.9210

# Conversions

## Conversions Part 2

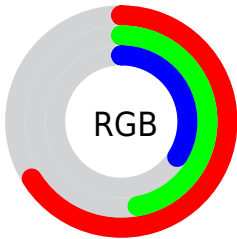
<b>Format</b>	<b>Color</b>
<b>R<sub>YB</sub></b>	168, 147, 86
Decimal	11041110
CIE <sub>Lab</sub>	54.73, 14.04, 26.38
CIE <sub>LCh</sub>	55, 29.888, 61.974
Yxy	22.6715, 0.4165, 0.3829
Android (android.graphics.Color)	4289231190 (0xFFA87956)
YUV	131.0630, -22.2161, 32.3937
Hunter-Lab	47.6146, 9.1420, 18.5370

# Details

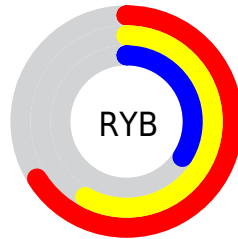
The Decimal color **11041110** is a dark color, and the websafe version is hex **996633**. A complement of this color would be **5670312**, and the grayscale version is **8618883**.

A 20% lighter version of the original color is **14790024**, and **7424040** is the 20% darker color. If you saturate the color by 10%, you get **11038533**, and if you desaturate by 10%, it is **11043687**.

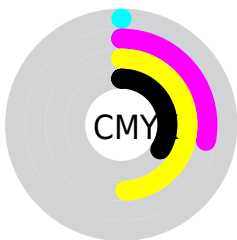
# Distribution



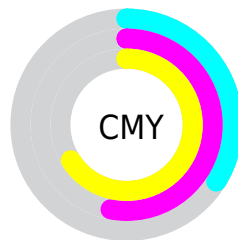
- Red (66%)
- Green (47%)
- Blue (34%)



- Red (66%)
- Yellow (58%)
- Blue (34%)



- Cyan (0%)
- Magenta (28%)
- Yellow (49%)
- Black (34%)



- Cyan (34%)
- Magenta (53%)
- Yellow (66%)

# Brightness & Saturation Gradients

These gradients show how the Decimal color 11041110 changes by changing the brightness by 10 percent. The first figure shows a shift by +10% for each color and the second figure -10%.

Similar to the brightness gradients but the following saturation gradients show a change of the Decimal color 11041110 by changing the saturation by 10% instead.



 11041110

 11041110

16777215

 9199678

 14790024

 7424040

 16763299

 5714450

 16770494

 4070400

 16777178

 2491904

 16777206

 0

 11041110

 11041110

 11038533

 11043687

 11036212

 11046008

■ 11033636

■ 11048584

■ 11031059

■ 11051161

■ 11028738

■ 11053482

■ 11028480

■ 11056059

■ 11058380

■ 11060956

■ 11063533

# Harmonies

## Analogous

The Analogous color harmony consists of three colors that are next to each other on the color wheel.



11825769



11041110



9667151

# Triad

The Triadic color harmony groups three colors that are evenly spaced from another and form a triangle on the color wheel.



11041110



3641732



8944815

# Complementary

The Complementary color scheme is a pair of colors which are on the opposite of each other on the color wheel.



11041110



5670312

# Split Complementary

Split-complementary colors differ from the complementary color scheme. The scheme consists of three colors, the original color and two neighbors of the complement color.



6391222



11041110



1937565

# Square

The Square scheme is like the rectangle color scheme, but the four colors are evenly spaced on the color wheel.



11041110



5803882



3509424



10843036

# Rectangle

The Rectangle color scheme consists of four colors that form a rectangle on the color wheel.



11041110



8488786



3509424



8159155



# Sweetspot

The Sweet Spot groups the original color and five complimentary colors.



11041110



14403770



11032198



7234138



15592941



7237230



# Same Dimension

The Same Dimension uses a secret algorithm to generate beautiful new colors.



11041110



14389594



11051350



5525324



9715456



1313024



# Inverse Universe

The Inverse Universe completely reimagines the original color for something new.



5670312



5940443



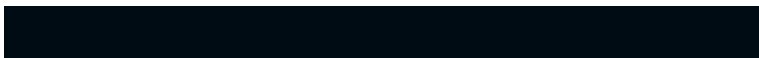
5660072



5001556



21908

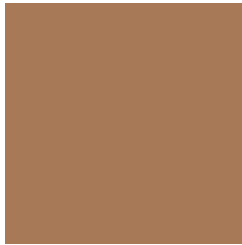


3092



# Previews

## White Background



This preview shows how the Decimal color 11041110 looks on a white background.

## Color Contrast Check

Large Text (above 18pt) WCAG AA ✓ Pass

Any Text WCAG AA × Fail

Large Text (above 18pt) WCAG AAA × Fail

Any Text WCAG AAA × Fail

# Black Background



This preview shows how the Decimal color 11041110 looks on a black background.

## Color Contrast Check

Large Text (above 18pt) WCAG AA ✓ Pass

Any Text WCAG AA ✓ Pass

Large Text (above 18pt) WCAG AAA ✓ Pass

Any Text WCAG AAA × Fail

If you want to check with other color combinations, try the [Color Contrast Checker](#).



## Decimal 11041110 Background



This preview shows how black text looks on a background with the Decimal color 11041110.



This preview shows how white text looks on a background with the Decimal color 11041110.

# Color Blindness Simulation

Color vision deficiency is a very complex topic, and I could not describe the different causes any better than Wikipedia does, so if you want to learn more, you should check out their [article about color blindness](#).

## Dichromacy



**Original Color**  
11041110

**Protanopia**  
9339738

**Deuteranopia**  
10386773



**Tritanopia**  
11236477

# Trichromacy



**Original Color**  
11041110

**Protanomaly**  
9928537

**Deuteranomaly**  
10648661

**Tritanomaly**  
11171439

# Monochromacy



**Original Color**  
11041110

**Achromatopsia**  
8618883

**Achromatomaly**  
9469811

# CSS Examples

## Text

The CSS property to change the color of the text to Decimal 11041110 is called "color". The color property can be set on classes, ids or directly on the HTML element.

This example shows how text in the color #A87956 looks like.

```
.text, #text, p{  
    color:#A87956  
}
```

If you want to add a text shadow in that color use the text-shadow property, you can generate a text shadow directly with our [CSS Text Shadow Generator](#).

Here you see how black text with a 4 pixel #A87956 colored shadow looks like.

```
.shadow{ text-shadow: 4px 4px 2px #A87956
}
```

## Border

The CSS property to change the border of an element to Decimal 11041110 is called "border". The border property can be set on classes, ids or directly on the HTML element.

This example shows the color as border, it can be applied via the CSS property "border" or "border-color".

```
.border, #border, table{ border:4px solid
#A87956 }
```

If only the border color should be changed use the property `border-color`.

```
.border{ border-color:#A87956 }
```

If you want to add a box shadow in that color use:

Here you see how a box with a 4 pixel #A87956 colored shadow looks like.

```
.boxshadow{ -moz-box-shadow:4px 4px 4px  
4px #A87956; -webkit-box-shadow:4px 4px  
4px 4px #A87956; box-shadow:4px 4px 4px  
4px #A87956 }
```

# Background

The CSS property to change the background color of an element to Decimal 11041110 is called "background". The background property can be set on classes, ids or directly on the HTML element.

```
.background, #background, body{  
background:#A87956 }
```

If only the background color should be changed can be used:

```
.background{ background-color:#A87956 }
```

This example shows the color as background, it is applied via the CSS property "background".

To optimize and compress your CSS code, you can use our [online CSS compressor and optimizer](#) based on csstidy. If you want to create a linear or radial gradient as background or border, check our [CSS Gradient Generator](#).



Hey! You found this booklet interesting? Support Converting Colors with the new Membership Option!

The pro membership hides all ads, plus gives you double the colors in the color bucket, and more awesome pro features!

**[Learn more, Memberships starting at \\$2.50/m!](#)**

**Follow me  
on Twitter!**

@ConvertingColor