

# Converting Colors

Decimal(11041364)

Have a look what the booklet for  
Decimal(11041364) contains.

<b>Decimal(11041364)</b> .....	3
<i><b>Conversions</b></i> .....	4
<i><b>Details</b></i> .....	6
<i><b>Harmonies</b></i> .....	11
<i><b>Previews</b></i> .....	23
<i><b>Color Blindness Simulation</b></i> .....	26
<i><b>CSS Examples</b></i> .....	29

# Color

**Decimal(11041364)**

# Conversions

## Conversions Part 1

<b>Format</b>	<b>Color</b>
Hex	A87A54
RGB	168, 122, 84
RGB Percent	66%, 48%, 33%
CMY	0.3412, 0.5216, 0.6706
CMYK	0.00, 0.27, 0.50, 0.34
HSL	27°, 33%, 49%
HSV	27°, 50%, 66%
XYZ	24.7082, 22.8840, 11.5023
YIQ	131.4220, 39.6140, -2.0660

# Conversions

## Conversions Part 2

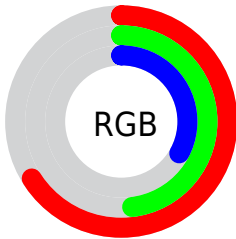
<b>Format</b>	<b>Color</b>
<a href="#">RYB</a>	<a href="#">168, 153, 84</a>
Decimal	<a href="#">11041364</a>
CIELab	<a href="#">54.95, 13.28, 27.79</a>
CIELCh	<a href="#">55, 30.797, 64.460</a>
Yxy	<a href="#">22.8840, 0.4181, 0.3872</a>
Android (android.graphics.Color)	<a href="#">4289231444 (0xFFA87A54)</a>
YUV	<a href="#">131.4220, -23.3790, 32.0789</a>
Hunter-Lab	<a href="#">47.8372, 8.4812, 19.2300</a>

# Details

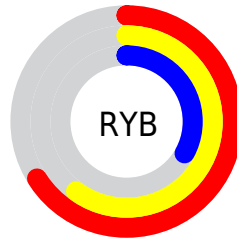
The Decimal color **11041364** is a dark color, and the websafe version is hex **996633**. A complement of this color would be **5538472**, and the grayscale version is **8684676**.

A 20% lighter version of the original color is **14790278**, and **7424294** is the 20% darker color. If you saturate the color by 10%, you get **11039043**, and if you desaturate by 10%, it is **11043685**.

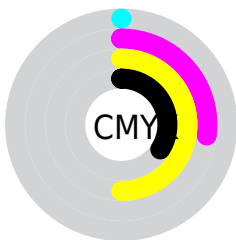
# Distribution



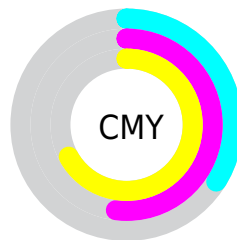
- Red (66%)
- Green (48%)
- Blue (33%)



- Red (66%)
- Yellow (60%)
- Blue (33%)



- Cyan (0%)
- Magenta (27%)
- Yellow (50%)
- Black (34%)



- Cyan (34%)
- Magenta (52%)
- Yellow (67%)

# Brightness & Saturation Gradients

These gradients show how the Decimal color 11041364 changes by changing the brightness by 10 percent. The first figure shows a shift by +10% for each color and the second figure -10%.

Similar to the brightness gradients but the following saturation gradients show a change of the Decimal color 11041364 by changing the saturation by 10% instead.




 11041364       11041364

16777215       9199932

 14790278       7424294

 16763552       5714704

 16770748       4070656

 16777175       2492160

 16777204       0

 11041364       11041364

 11039043       11043685

 11036722       11046006

■ 11034146

■ 11048582

■ 11031825

■ 11050903

■ 11029504

■ 11053224

■ 11055545

■ 11057866

■ 11060442

■ 11062763

# Harmonies

## Analogous

The Analogous color harmony consists of three colors that are next to each other on the color wheel.



11956839



11041364



9536334

# Triad

The Triadic color harmony groups three colors that are evenly spaced from another and form a triangle on the color wheel.



11041364



3183239



9206703

# Complementary

The Complementary color scheme is a pair of colors which are on the opposite of each other on the color wheel.



11041364



5538472

# Split Complementary

Split-complementary colors differ from the complementary color scheme. The scheme consists of three colors, the original color and two neighbors of the complement color.



6587832



11041364



1282465

# Square

The Square scheme is like the rectangle color scheme, but the four colors are evenly spaced on the color wheel.



11041364



5607532



3509427



11039387

# Rectangle

The Rectangle color scheme consists of four colors that form a rectangle on the color wheel.



11041364



8358226



3509427



8421044



# Sweetspot

The Sweet Spot groups the original color and five complimentary colors.



11041364



14404026



11031682



7234394



15592941



7237230



# Same Dimension

The Same Dimension uses a secret algorithm to generate beautiful new colors.



11041364



14390104



11052116



5525580



9716480



1313024



# Inverse Universe

The Inverse Universe completely reimagines the original color for something new.



5538472



5808347



5527720



5001300



20884

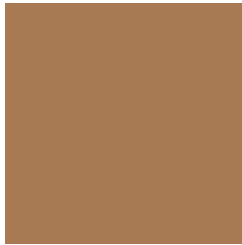


2836



# Previews

## White Background



This preview shows how the Decimal color 11041364 looks on a white background.

## Color Contrast Check

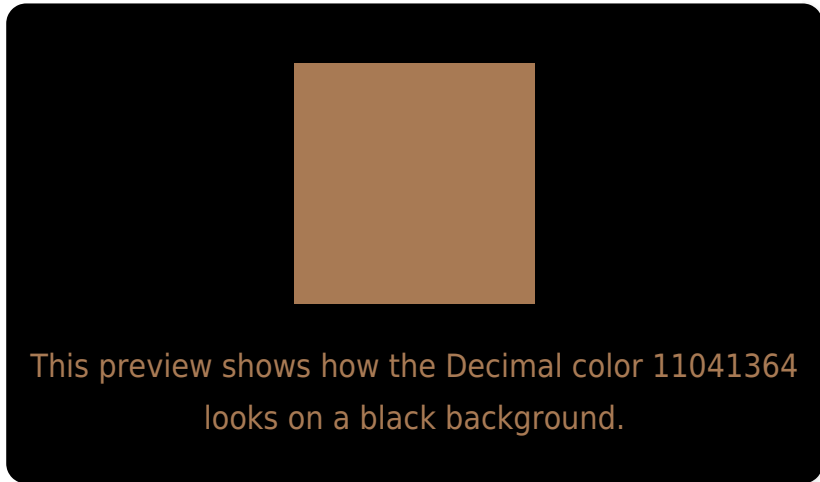
Large Text (above 18pt) WCAG AA ✓ Pass

Any Text WCAG AA × Fail

Large Text (above 18pt) WCAG AAA × Fail

Any Text WCAG AAA × Fail

# Black Background



## Color Contrast Check

Large Text (above 18pt) WCAG AA ✓ Pass

Any Text WCAG AA ✓ Pass

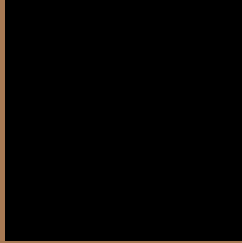
Large Text (above 18pt) WCAG AAA ✓ Pass

Any Text WCAG AAA × Fail

If you want to check with other color combinations, try the [Color Contrast Checker](#).



## Decimal 11041364 Background



This preview shows how black text looks on a background with the Decimal color 11041364.



This preview shows how white text looks on a background with the Decimal color 11041364.

# Color Blindness Simulation

Color vision deficiency is a very complex topic, and I could not describe the different causes any better than Wikipedia does, so if you want to learn more, you should check out their [article about color blindness](#).

## Dichromacy



**Original Color**  
11041364

**Protanopia**  
9405528

**Deuteranopia**  
10452563



**Tritanopia**  
11302270

# Trichromacy



**Original Color**  
11041364

**Protanomaly**  
9994327

**Deuteranomaly**  
10648915

**Tritanomaly**  
11237231

# Monochromacy



**Original Color**  
11041364

**Achromatopsia**  
8618883

**Achromatomaly**  
9470066

# CSS Examples

## Text

The CSS property to change the color of the text to Decimal 11041364 is called "color". The color property can be set on classes, ids or directly on the HTML element.

This example shows how text in the color #A87A54 looks like.

```
.text, #text, p{  
    color:#A87A54  
}
```

If you want to add a text shadow in that color use the text-shadow property, you can generate a text shadow directly with our [CSS Text Shadow Generator](#).

Here you see how black text with a 4 pixel #A87A54 colored shadow looks like.

```
.shadow{ text-shadow: 4px 4px 2px #A87A54  
}
```

## Border

The CSS property to change the border of an element to Decimal 11041364 is called "border". The border property can be set on classes, ids or directly on the HTML element.

This example shows the color as border, it can be applied via the CSS property "border" or "border-color".

```
.border, #border, table{ border:4px solid  
#A87A54 }
```

If only the border color should be changed use the property `border-color`.

```
.border{ border-color:#A87A54 }
```

If you want to add a box shadow in that color use:

Here you see how a box with a 4 pixel #A87A54 colored shadow looks like.

```
.boxshadow{ -moz-box-shadow:4px 4px 4px  
4px #A87A54; -webkit-box-shadow:4px 4px  
4px 4px #A87A54; box-shadow:4px 4px 4px  
4px #A87A54 }
```

# Background

The CSS property to change the background color of an element to Decimal 11041364 is called "background". The background property can be set on classes, ids or directly on the HTML element.

```
.background, #background, body{  
background:#A87A54 }
```

If only the background color should be changed can be used:

```
.background{ background-color:#A87A54 }
```

This example shows the color as background, it is applied via the CSS property "background".

To optimize and compress your CSS code, you can use our [online CSS compressor and optimizer](#) based on csstidy. If you want to create a linear or radial gradient as background or border, check our [CSS Gradient Generator](#).



Hey! You found this booklet interesting? Support Converting Colors with the new Membership Option!

The pro membership hides all ads, plus gives you double the colors in the color bucket, and more awesome pro features!

**[Learn more, Memberships starting at \\$2.50/m!](#)**

**Follow me  
on Twitter!**

@ConvertingColor