

Converting Colors

Decimal(11044714)

Have a look what the booklet for
Decimal(11044714) contains.

Decimal(11044714)	3
<i>Conversions</i>	4
<i>Details</i>	6
<i>Harmonies</i>	11
<i>Previews</i>	23
<i>Color Blindness Simulation</i>	26
<i>CSS Examples</i>	29

Color

Decimal(11044714)

Conversions

Conversions Part 1

Format	Color
Hex	A8876A
RGB	168, 135, 106
RGB Percent	66%, 53%, 42%
CMY	0.3412, 0.4706, 0.5843
CMYK	0.00, 0.20, 0.37, 0.34
HSL	28°, 26%, 54%
HSV	28°, 37%, 66%
XYZ	27.4139, 26.6934, 17.3431
YIQ	141.5610, 28.9770, -2.0230

Conversions

Conversions Part 2

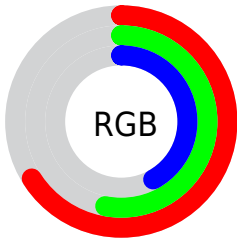
Format	Color
R_{YB}	168, 160, 106
Decimal	11044714
CIE _{Lab}	58.69, 8.42, 20.36
CIE _{LCh}	59, 22.032, 67.538
Yxy	26.6934, 0.3837, 0.3736
Android (android.graphics.Color)	4289234794 (0xFFA8876A)
YUV	141.5610, -17.5316, 23.1870
Hunter-Lab	51.6656, 4.2978, 16.2635

Details

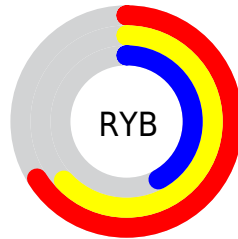
The Decimal color **11044714** is a dark color, and the websafe version is hex **CC9966**. A complement of this color would be **6982568**, and the grayscale version is **9342606**.

A 20% lighter version of the original color is **14728349**, and **7558458** is the 20% darker color. If you saturate the color by 10%, you get **11042393**, and if you desaturate by 10%, it is **11047035**.

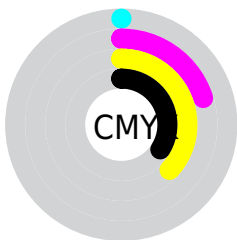
Distribution



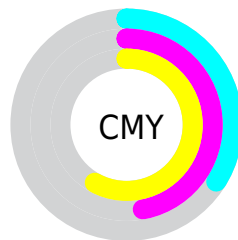
- Red (66%)
- Green (53%)
- Blue (42%)



- Red (66%)
- Yellow (63%)
- Blue (42%)



- Cyan (0%)
- Magenta (20%)
- Yellow (37%)
- Black (34%)



- Cyan (34%)
- Magenta (47%)
- Yellow (58%)

Brightness & Saturation Gradients

These gradients show how the Decimal color 11044714 changes by changing the brightness by 10 percent. The first figure shows a shift by +10% for each color and the second figure -10%.

Similar to the brightness gradients but the following saturation gradients show a change of the Decimal color 11044714 by changing the saturation by 10% instead.

 11044714

 11044714

16777215

 9268818

 14728349

 7558458

 16636088

 5848612

 16774356

 4204560

 16777201

 2692096

 458752

 0

 11044714

 11044714

 11042393

 11047035

■ 11040072

■ 11049356

■ 11037752

■ 11051676

■ 11035431

■ 11053997

■ 11033110

■ 11056318

■ 11030789

■ 11058639

■ 11030272

■ 11060960

■ 11063280

■ 11065343

Harmonies

Analogous

The Analogous color harmony consists of three colors that are next to each other on the color wheel.



11764087



11044714



9866599

Triad

The Triadic color harmony groups three colors that are evenly spaced from another and form a triangle on the color wheel.



11044714



5871762



9865132

Complementary

The Complementary color scheme is a pair of colors which are on the opposite of each other on the color wheel.



11044714



6982568

Split Complementary

Split-complementary colors differ from the complementary color scheme. The scheme consists of three colors, the original color and two neighbors of the complement color.



8162739



11044714



5609380

Square

The Square scheme is like the rectangle color scheme, but the four colors are evenly spaced on the color wheel.



11044714



7051134



6525872



11174300

Rectangle

The Rectangle color scheme consists of four colors that form a rectangle on the color wheel.



11044714



8950123



6525872



9341359

Sweetspot

The Sweet Spot groups the original color and five complimentary colors.



11044714



14405315



11037323



7235167



15592941



7237230

Same Dimension

The Same Dimension uses a secret algorithm to generate beautiful new colors.



11044714



14395515



11052650



5525580



9716992



1313280

Inverse Universe

The Inverse Universe completely reimagines the original color for something new.



6982568



8105691



6974632



5001300



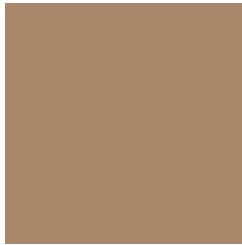
20372



2836

Previews

White Background



This preview shows how the Decimal color 11044714 looks on a white background.

Color Contrast Check

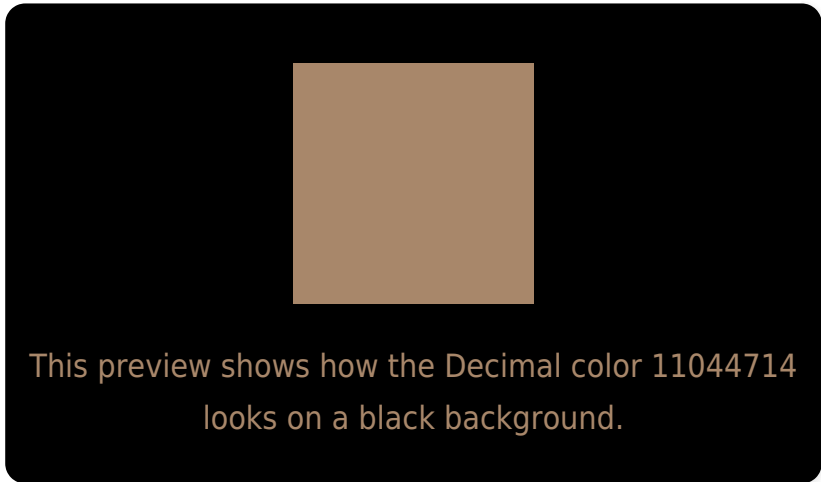
Large Text (above 18pt) WCAG AA ✓ Pass

Any Text WCAG AA × Fail

Large Text (above 18pt) WCAG AAA × Fail

Any Text WCAG AAA × Fail

Black Background



Color Contrast Check

Large Text (above 18pt) WCAG AA ✓ Pass

Any Text WCAG AA ✓ Pass

Large Text (above 18pt) WCAG AAA ✓ Pass

Any Text WCAG AAA × Fail

If you want to check with other color combinations, try the [Color Contrast Checker](#).

Decimal 11044714 Background



This preview shows how black text looks on a background with the Decimal color 11044714.



This preview shows how white text looks on a background with the Decimal color 11044714.

Color Blindness Simulation

Color vision deficiency is a very complex topic, and I could not describe the different causes any better than Wikipedia does, so if you want to learn more, you should check out their [article about color blindness](#).


Dichromacy



Original Color
11044714

Protanopia
9932141

Deuteranopia
10979434



Tritanopia
11305612

Trichromacy



Original Color
11044714

Protanomaly
10324844

Deuteranomaly
10979434

Tritanomaly
11240576

Monochromacy



Original Color
11044714

Achromatopsia
9342606

Achromatomaly
9931649

CSS Examples

Text

The CSS property to change the color of the text to Decimal 11044714 is called "color". The color property can be set on classes, ids or directly on the HTML element.

This example shows how text in the color #A8876A looks like.

```
.text, #text, p{  
    color:#A8876A  
}
```

If you want to add a text shadow in that color use the text-shadow property, you can generate a text shadow directly with our [CSS Text Shadow Generator](#).

Here you see how black text with a 4 pixel #A8876A colored shadow looks like.

```
.shadow{ text-shadow: 4px 4px 2px #A8876A
}
```

Border

The CSS property to change the border of an element to Decimal 11044714 is called "border". The border property can be set on classes, ids or directly on the HTML element.

This example shows the color as border, it can be applied via the CSS property "border" or "border-color".

```
.border, #border, table{ border:4px solid
#A8876A }
```

If only the border color should be changed use the property `border-color`.

```
.border{ border-color:#A8876A }
```

If you want to add a box shadow in that color use:

Here you see how a box with a 4 pixel #A8876A colored shadow looks like.

```
.boxshadow{ -moz-box-shadow:4px 4px 4px  
4px #A8876A; -webkit-box-shadow:4px 4px  
4px 4px #A8876A; box-shadow:4px 4px 4px  
4px #A8876A }
```

Background

The CSS property to change the background color of an element to Decimal 11044714 is called "background". The background property can be set on classes, ids or directly on the HTML element.

```
.background, #background, body{  
background:#A8876A }
```

If only the background color should be changed can be used:

```
.background{ background-color:#A8876A }
```

This example shows the color as background, it is applied via the CSS property "background".

To optimize and compress your CSS code, you can use our [online CSS compressor and optimizer](#) based on csstidy. If you want to create a linear or radial gradient as background or border, check our [CSS Gradient Generator](#).

Hey! You found this booklet interesting? Support Converting Colors with the new Membership Option!

The pro membership hides all ads, plus gives you double the colors in the color bucket, and more awesome pro features!

[Learn more, Memberships starting at \\$2.50/m!](#)

**Follow me
on Twitter!**

@ConvertingColor