

Converting Colors

Decimal(11045749)

Have a look what the booklet for
Decimal(11045749) contains.

Decimal(11045749)	3
<i>Conversions</i>	4
<i>Details</i>	6
<i>Harmonies</i>	11
<i>Previews</i>	23
<i>Color Blindness Simulation</i>	26
<i>CSS Examples</i>	29

Color

Decimal(11045749)

Conversions

Conversions Part 1

Format	Color
Hex	A88B75
RGB	168, 139, 117
RGB Percent	66%, 55%, 46%
CMY	0.3412, 0.4549, 0.5412
CMYK	0.00, 0.17, 0.30, 0.34
HSL	26°, 23%, 56%
HSV	26°, 30%, 66%
XYZ	28.5920, 28.0744, 20.7416
YIQ	145.1630, 24.3460, -0.6940

Conversions

Conversions Part 2

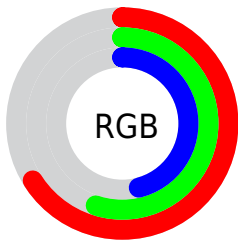
Format	Color
R_{YB}	168, 156, 117
Decimal	11045749
CIE _{Lab}	59.96, 7.62, 15.88
CIE _{LCh}	60, 17.616, 64.354
Yxy	28.0744, 0.3694, 0.3627
Android (android.graphics.Color)	4289235829 (0xFFA88B75)
YUV	145.1630, -13.8844, 20.0280
Hunter-Lab	52.9853, 3.5980, 13.8801

Details

The Decimal color **11045749** is a dark color, and the websafe version is hex **CC9999**. A complement of this color would be **7705256**, and the grayscale version is **9539985**.

A 20% lighter version of the original color is **14729385**, and **7559493** is the 20% darker color. If you saturate the color by 10%, you get **11043172**, and if you desaturate by 10%, it is **11048326**.

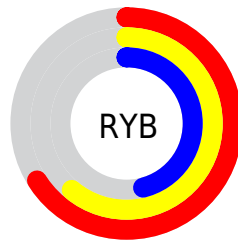
Distribution



Red (66%)

Green (55%)

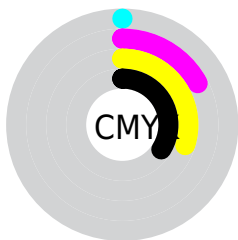
Blue (46%)



Red (66%)

Yellow (61%)

Blue (46%)

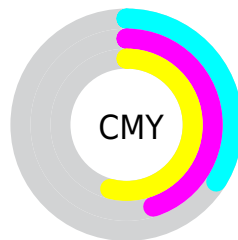


Cyan (0%)

Magenta (17%)

Yellow (30%)

Black (34%)



Cyan (34%)

Magenta (45%)

Yellow (54%)

Brightness & Saturation Gradients

These gradients show how the Decimal color 11045749 changes by changing the brightness by 10 percent. The first figure shows a shift by +10% for each color and the second figure -10%.

Similar to the brightness gradients but the following saturation gradients show a change of the Decimal color 11045749 by changing the saturation by 10% instead.



11045749



11045749

16777215



9269852



14729385



7559493



16637124



5915182



16775648



4271129

16777213



2823936



1179648



0



11045749



11045749



11043172



11048326

■ 11040851

■ 11050647

■ 11038275

■ 11053223

■ 11035954

■ 11055544

■ 11033377

■ 11058121

■ 11031056

■ 11060442

■ 11028480

■ 11063019

■ 11065339

■ 11067903

Harmonies

Analogous

The Analogous color harmony consists of three colors that are next to each other on the color wheel.



11569024



11045749



10129522

Triad

The Triadic color harmony groups three colors that are evenly spaced from another and form a triangle on the color wheel.



11045749



6986130



9866410

Complementary

The Complementary color scheme is a pair of colors which are on the opposite of each other on the color wheel.



11045749



7705256

Split Complementary

Split-complementary colors differ from the complementary color scheme. The scheme consists of three colors, the original color and two neighbors of the complement color.



8556975



11045749



6724001

Square

The Square scheme is like the rectangle color scheme, but the four colors are evenly spaced on the color wheel.



11045749



7837827



7313068



10979230

Rectangle

The Rectangle color scheme consists of four colors that form a rectangle on the color wheel.



11045749



9409396



7313068



9408173

Sweetspot

The Sweet Spot groups the original color and five complimentary colors.



11045749



14405832



11040147



7235426



15592941



7237230

Same Dimension

The Same Dimension uses a secret algorithm to generate beautiful new colors.



11045749



14397068



11052149



5525324



9715712



1313024

Inverse Universe

The Inverse Universe completely reimagines the original color for something new.



7705256



9222619



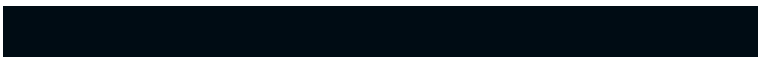
7698856



5001556



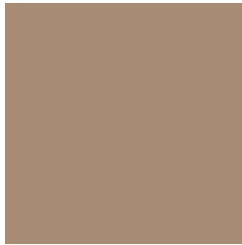
21652



3092

Previews

White Background



This preview shows how the Decimal color 11045749 looks on a white background.

Color Contrast Check

Large Text (above 18pt) WCAG AA ✓ Pass

Any Text WCAG AA × Fail

Large Text (above 18pt) WCAG AAA × Fail

Any Text WCAG AAA × Fail

Black Background



This preview shows how the Decimal color 11045749 looks on a black background.

Color Contrast Check

Large Text (above 18pt) WCAG AA ✓ Pass

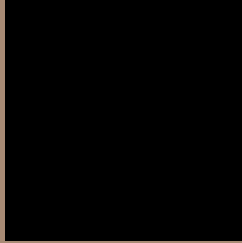
Any Text WCAG AA ✓ Pass

Large Text (above 18pt) WCAG AAA ✓ Pass

Any Text WCAG AAA × Fail

If you want to check with other color combinations, try the [Color Contrast Checker](#).

Decimal 11045749 Background



This preview shows how black text looks on a background with the Decimal color 11045749.



This preview shows how white text looks on a background with the Decimal color 11045749.

Color Blindness Simulation

Color vision deficiency is a very complex topic, and I could not describe the different causes any better than Wikipedia does, so if you want to learn more, you should check out their [article about color blindness](#).


Dichromacy



Original Color
11045749

Protanopia
10063992

Deuteranopia
11045749



Tritanopia
11241361

Trichromacy



Original Color
11045749

Protanomaly
10391159

Deuteranomaly
11045749

Tritanomaly
11176071

Monochromacy



Original Color
11045749

Achromatopsia
9539985

Achromatomaly
10063751

CSS Examples

Text

The CSS property to change the color of the text to Decimal 11045749 is called "color". The color property can be set on classes, ids or directly on the HTML element.

This example shows how text in the color #A88B75 looks like.

```
.text, #text, p{  
    color:#A88B75  
}
```

If you want to add a text shadow in that color use the text-shadow property, you can generate a text shadow directly with our [CSS Text Shadow Generator](#).

Here you see how black text with a 4 pixel #A88B75 colored shadow looks like.

```
.shadow{ text-shadow: 4px 4px 2px #A88B75
}
```

Border

The CSS property to change the border of an element to Decimal 11045749 is called "border". The border property can be set on classes, ids or directly on the HTML element.

This example shows the color as border, it can be applied via the CSS property "border" or "border-color".

```
.border, #border, table{ border:4px solid
#A88B75 }
```

If only the border color should be changed use the property `border-color`.

```
.border{ border-color:#A88B75 }
```

If you want to add a box shadow in that color use:

Here you see how a box with a 4 pixel #A88B75 colored shadow looks like.

```
.boxshadow{ -moz-box-shadow:4px 4px 4px  
4px #A88B75; -webkit-box-shadow:4px 4px  
4px 4px #A88B75; box-shadow:4px 4px 4px  
4px #A88B75 }
```

Background

The CSS property to change the background color of an element to Decimal 11045749 is called "background". The background property can be set on classes, ids or directly on the HTML element.

```
.background, #background, body{  
background:#A88B75 }
```

If only the background color should be changed can be used:

```
.background{ background-color:#A88B75 }
```

This example shows the color as background, it is applied via the CSS property "background".

To optimize and compress your CSS code, you can use our [online CSS compressor and optimizer](#) based on csstidy. If you want to create a linear or radial gradient as background or border, check our [CSS Gradient Generator](#).

Hey! You found this booklet interesting? Support Converting Colors with the new Membership Option!

The pro membership hides all ads, plus gives you double the colors in the color bucket, and more awesome pro features!

[Learn more, Memberships starting at \\$2.50/m!](#)

**Follow me
on Twitter!**

@ConvertingColor