

# Converting Colors

Decimal(11048843)

Have a look what the booklet for  
Decimal(11048843) contains.

<b>Decimal(11048843)</b> .....	3
<i><b>Conversions</b></i> .....	4
<i><b>Details</b></i> .....	6
<i><b>Harmonies</b></i> .....	11
<i><b>Previews</b></i> .....	23
<i><b>Color Blindness Simulation</b></i> .....	26
<i><b>CSS Examples</b></i> .....	29

# **Color**

**Decimal(11048843)**

# Conversions

## Conversions Part 1

Format	Color
Hex	A8978B
RGB	168, 151, 139
RGB Percent	66%, 59%, 55%
CMY	0.3412, 0.4078, 0.4549
CMYK	0.00, 0.10, 0.17, 0.34
HSL	25°, 14%, 60%
HSV	25°, 17%, 66%
XYZ	31.8753, 32.3221, 28.9849
YIQ	154.7150, 13.9840, -0.1280

# Conversions

## Conversions Part 2

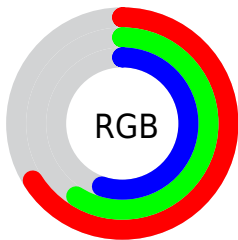
<b>Format</b>	<b>Color</b>
<b>RYB</b>	168, 159, 139
Decimal	11048843
CIELab	63.61, 4.24, 8.60
CIELCh	64, 9.589, 63.730
Yxy	32.3221, 0.3421, 0.3469
Android (android.graphics.Color)	4289238923 (0xFFA8978B)
YUV	154.7150, -7.7475, 11.6509
Hunter-Lab	56.8526, 0.5868, 9.5692

# Details

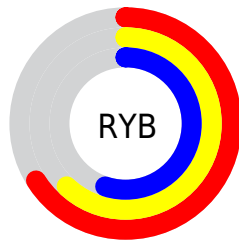
The Decimal color **11048843** is a light color, and the websafe version is hex **999999**. A complement of this color would be **9149608**, and the grayscale version is **10197915**.

A 20% lighter version of the original color is **14667200**, and **7627865** is the 20% darker color. If you saturate the color by 10%, you get **11046266**, and if you desaturate by 10%, it is **11051420**.

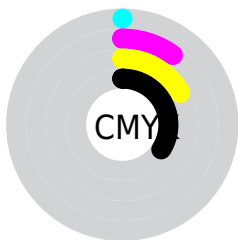
# Distribution



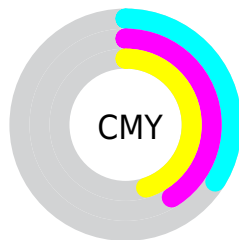
- Red (66%)
- Green (59%)
- Blue (55%)



- Red (66%)
- Yellow (62%)
- Blue (55%)



- Cyan (0%)
- Magenta (10%)
- Yellow (17%)
- Black (34%)



- Cyan (34%)
- Magenta (41%)
- Yellow (45%)

# Brightness & Saturation Gradients

These gradients show how the Decimal color 11048843 changes by changing the brightness by 10 percent. The first figure shows a shift by +10% for each color and the second figure -10%.

Similar to the brightness gradients but the following saturation gradients show a change of the Decimal color 11048843 by changing the saturation by 10% instead.



 11048843

 11048843

16777215

 9272690

 14667200

 7627865

 16574940

 5983298

 16777209

 4404780

 2957335

 1640704

 0

 11048843

 11048843

 11046266

 11051420

■ 11043689

■ 11053997

■ 11041113

■ 11056573

■ 11038792

■ 11058894

■ 11036215

■ 11061471

■ 11033638

■ 11064048

■ 11031061

■ 11066623

■ 11028485

■ 11069183

■ 11027968

■ 11071743

# Harmonies

## Analogous

The Analogous color harmony consists of three colors that are next to each other on the color wheel.



11310481



11048843



10525321

# Triad

The Triadic color harmony groups three colors that are evenly spaced from another and form a triangle on the color wheel.



11048843



8822683



10328232

# Complementary

The Complementary color scheme is a pair of colors which are on the opposite of each other on the color wheel.



11048843



9149608

# Split Complementary

Split-complementary colors differ from the complementary color scheme. The scheme consists of three colors, the original color and two neighbors of the complement color.



9607851



11048843



8757155

# Square

The Square scheme is like the rectangle color scheme, but the four colors are evenly spaced on the color wheel.



11048843



9281170



9018793



10917282

# Rectangle

The Rectangle color scheme consists of four colors that form a rectangle on the color wheel.



11048843



10132618



9018793



10131626



# Sweetspot

The Sweet Spot groups the original color and five complimentary colors.



11048843



14407120



11045788



7236199



15592941



7237230



# Same Dimension

The Same Dimension uses a secret algorithm to generate beautiful new colors.



11048843



14401709



11052427



5525324



9714944



1312768



# Inverse Universe

The Inverse Universe completely reimagines the original color for something new.



9149608



11389147



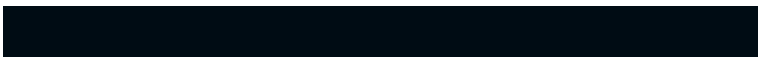
9146024



5001556



22420

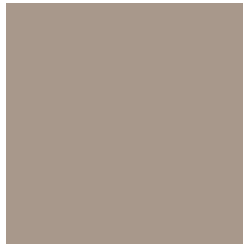


3092



# Previews

## White Background



This preview shows how the Decimal color 11048843 looks on a white background.

## Color Contrast Check

Large Text (above 18pt) WCAG AA × Fail

Any Text WCAG AA × Fail

Large Text (above 18pt) WCAG AAA × Fail

Any Text WCAG AAA × Fail

# Black Background



This preview shows how the Decimal color 11048843 looks on a black background.

## Color Contrast Check

Large Text (above 18pt) WCAG AA ✓ Pass

Any Text WCAG AA ✓ Pass

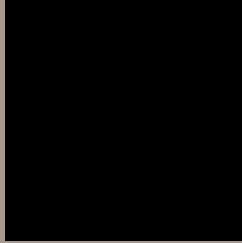
Large Text (above 18pt) WCAG AAA ✓ Pass

Any Text WCAG AAA ✓ Pass

If you want to check with other color combinations, try the [Color Contrast Checker](#).



## Decimal 11048843 Background



This preview shows how black text looks on a background with the Decimal color 11048843.



This preview shows how white text looks on a background with the Decimal color 11048843.

# Color Blindness Simulation

Color vision deficiency is a very complex topic, and I could not describe the different causes any better than Wikipedia does, so if you want to learn more, you should check out their [article about color blindness](#).

## Dichromacy



**Original Color**

11048843

**Protanopia**

10525324

**Deuteranopia**

11441547



**Tritanopia**  
11244704

# Trichromacy



**Original Color**  
11048843

**Protanomaly**  
10721676

**Deuteranomaly**  
11310731

**Tritanomaly**  
11179416

# Monochromacy



**Original Color**  
11048843

**Achromatopsia**  
10197915

**Achromatomaly**  
10525333

# CSS Examples

## Text

The CSS property to change the color of the text to Decimal 11048843 is called "color". The color property can be set on classes, ids or directly on the HTML element.

This example shows how text in the color #A8978B looks like.

```
.text, #text, p{  
    color:#A8978B  
}
```

If you want to add a text shadow in that color use the text-shadow property, you can generate a text shadow directly with our [CSS Text Shadow Generator](#).

Here you see how black text with a 4 pixel #A8978B colored shadow looks like.

```
.shadow{ text-shadow: 4px 4px 2px #A8978B
}
```

## Border

The CSS property to change the border of an element to Decimal 11048843 is called "border". The border property can be set on classes, ids or directly on the HTML element.

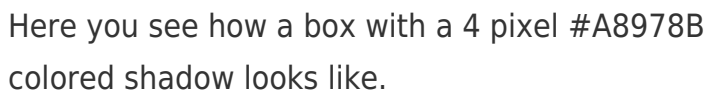
This example shows the color as border, it can be applied via the CSS property "border" or "border-color".

```
.border, #border, table{ border:4px solid
#A8978B }
```

If only the border color should be changed use the property `border-color`.

```
.border{ border-color:#A8978B }
```

If you want to add a box shadow in that color use:



Here you see how a box with a 4 pixel #A8978B colored shadow looks like.

```
.boxshadow{ -moz-box-shadow:4px 4px 4px  
4px #A8978B; -webkit-box-shadow:4px 4px  
4px 4px #A8978B; box-shadow:4px 4px 4px  
4px #A8978B }
```

# Background

The CSS property to change the background color of an element to Decimal 11048843 is called "background". The background property can be set on classes, ids or directly on the HTML element.

```
.background, #background, body{  
background:#A8978B }
```

If only the background color should be changed can be used:

```
.background{ background-color:#A8978B }
```

This example shows the color as background, it is applied via the CSS property "background".

To optimize and compress your CSS code, you can use our [online CSS compressor and optimizer](#) based on csstidy. If you want to create a linear or radial gradient as background or border, check our [CSS Gradient Generator](#).



Hey! You found this booklet interesting? Support Converting Colors with the new Membership Option!

The pro membership hides all ads, plus gives you double the colors in the color bucket, and more awesome pro features!

**[Learn more, Memberships starting at \\$2.50/m!](#)**

**Follow me  
on Twitter!**

@ConvertingColor