

# Converting Colors

Decimal(11109253)

Have a look what the booklet for  
Decimal(11109253) contains.

<b>Decimal(11109253)</b> .....	3
<i><b>Conversions</b></i> .....	4
<i><b>Details</b></i> .....	6
<i><b>Harmonies</b></i> .....	11
<i><b>Previews</b></i> .....	23
<i><b>Color Blindness Simulation</b></i> .....	26
<i><b>CSS Examples</b></i> .....	29

# Color

**Decimal(11109253)**

# Conversions

## Conversions Part 1

<b>Format</b>	<b>Color</b>
Hex	A98385
RGB	169, 131, 133
RGB Percent	66%, 51%, 52%
CMY	0.3373, 0.4863, 0.4784
CMYK	0.00, 0.22, 0.21, 0.34
HSL	357°, 18%, 59%
HSV	357°, 22%, 66%
XYZ	28.7121, 26.3611, 25.7652
YIQ	142.5900, 22.0060, 8.6780

# Conversions

## Conversions Part 2

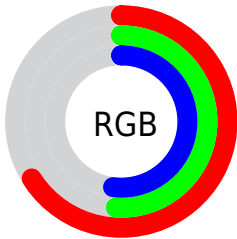
<b>Format</b>	<b>Color</b>
<b>R<sub>YB</sub></b>	169, 131, 133
Decimal	11109253
CIE <sub>Lab</sub>	58.38, 14.89, 4.53
CIE <sub>LCh</sub>	58, 15.568, 16.928
Yxy	26.3611, 0.3552, 0.3261
Android (android.graphics.Color)	4289299333 (0xFFA98385)
YUV	142.5900, -4.7279, 23.1616
Hunter-Lab	51.3430, 9.9707, 6.1869

# Details

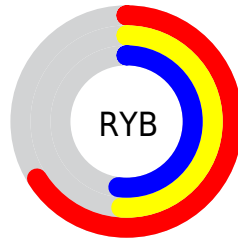
The Decimal color **11109253** is a dark color, and the websafe version is hex **CC9999**. A complement of this color would be **8628647**, and the grayscale version is **9408399**.

A 20% lighter version of the original color is **14792890**, and **7622996** is the 20% darker color. If you saturate the color by 10%, you get **11104885**, and if you desaturate by 10%, it is **11113621**.

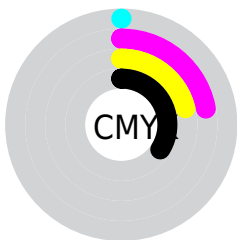
# Distribution



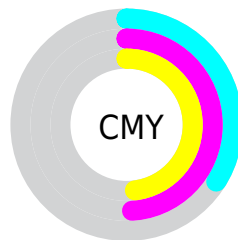
- Red (66%)
- Green (51%)
- Blue (52%)



- Red (66%)
- Yellow (51%)
- Blue (52%)



- Cyan (0%)
- Magenta (22%)
- Yellow (21%)
- Black (34%)



- Cyan (34%)
- Magenta (49%)
- Yellow (48%)

# Brightness & Saturation Gradients

These gradients show how the Decimal color 11109253 changes by changing the brightness by 10 percent. The first figure shows a shift by +10% for each color and the second figure -10%.

Similar to the brightness gradients but the following saturation gradients show a change of the Decimal color 11109253 by changing the saturation by 10% instead.





11109253



11109253

16777215



9333356



14792890



7622996



16700630



5978685



16773362



4400167



2887442



1179648



0



11109253



11109253



11104885



11113621

■ 11100517

■ 11117989

■ 11096149

■ 11122357

■ 11091781

■ 11126725

■ 11087413

■ 11130837

■ 11083301

■ 11135205

■ 11078933

■ 11139573

■ 11075593

■ 11141119

# Harmonies

## Analogous

The Analogous color harmony consists of three colors that are next to each other on the color wheel.



10781587



11109253



10913145

# Triad

The Triadic color harmony groups three colors that are evenly spaced from another and form a triangle on the color wheel.



11109253



8360569



7770023

# Complementary

The Complementary color scheme is a pair of colors which are on the opposite of each other on the color wheel.



11109253



8628647

# Split Complementary

Split-complementary colors differ from the complementary color scheme. The scheme consists of three colors, the original color and two neighbors of the complement color.



6984608



11109253



7443590

# Square

The Square scheme is like the rectangle color scheme, but the four colors are evenly spaced on the color wheel.



11109253



9408114



6919316



8883110

# Rectangle

The Rectangle color scheme consists of four colors that form a rectangle on the color wheel.



11109253



10520692



6919316



7442853



# Sweetspot

The Sweet Spot groups the original color and five complimentary colors.



11109253



14404813



10912681



7234917



15592941



7237230



# Same Dimension

The Same Dimension uses a secret algorithm to generate beautiful new colors.



11109253



14393507



11113347



5524556



9699336



1310721



# Inverse Universe

The Inverse Universe completely reimagines the original color for something new.



11109253



14393507



8624553



5524556



9699336

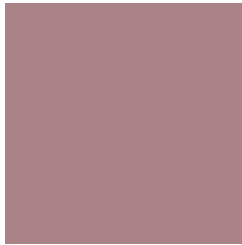


1310721



# Previews

## White Background



This preview shows how the Decimal color 11109253 looks on a white background.

## Color Contrast Check

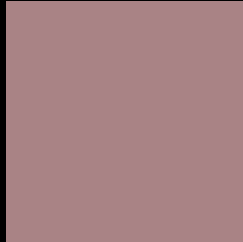
Large Text (above 18pt) WCAG AA ✓ Pass

Any Text WCAG AA × Fail

Large Text (above 18pt) WCAG AAA × Fail

Any Text WCAG AAA × Fail

# Black Background



This preview shows how the Decimal color 11109253 looks on a black background.

## Color Contrast Check

Large Text (above 18pt) WCAG AA ✓ Pass

Any Text WCAG AA ✓ Pass

Large Text (above 18pt) WCAG AAA ✓ Pass

Any Text WCAG AAA × Fail

If you want to check with other color combinations, try the [Color Contrast Checker](#).



## Decimal 11109253 Background



This preview shows how black text looks on a background with the Decimal color 11109253.



This preview shows how white text looks on a background with the Decimal color 11109253.

# Color Blindness Simulation

Color vision deficiency is a very complex topic, and I could not describe the different causes any better than Wikipedia does, so if you want to learn more, you should check out their [article about color blindness](#).


## Dichromacy



**Original Color**  
11109253

**Protanopia**  
9473162

**Deuteranopia**  
10324100



**Tritanopia**  
11174540

# Trichromacy



**Original Color**  
11109253

**Protanomaly**  
10062216

**Deuteranomaly**  
10585732

**Tritanomaly**  
11174537

# Monochromacy



**Original Color**  
11109253

**Achromatopsia**  
9408399

**Achromatomaly**  
9997195

# CSS Examples

## Text

The CSS property to change the color of the text to Decimal 11109253 is called "color". The color property can be set on classes, ids or directly on the HTML element.

This example shows how text in the color #A98385 looks like.

```
.text, #text, p{  
  color:#A98385  
}
```

If you want to add a text shadow in that color use the text-shadow property, you can generate a text shadow directly with our [CSS Text Shadow Generator](#).

Here you see how black text with a 4 pixel #A98385 colored shadow looks like.

```
.shadow{ text-shadow: 4px 4px 2px #A98385
}
```

## Border

The CSS property to change the border of an element to Decimal 11109253 is called "border". The border property can be set on classes, ids or directly on the HTML element.

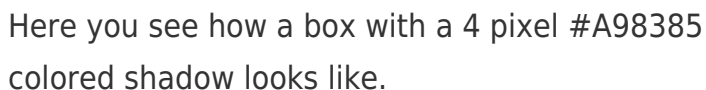
This example shows the color as border, it can be applied via the CSS property "border" or "border-color".

```
.border, #border, table{ border:4px solid
#A98385 }
```

If only the border color should be changed use the property `border-color`.

```
.border{ border-color:#A98385 }
```

If you want to add a box shadow in that color use:



Here you see how a box with a 4 pixel #A98385 colored shadow looks like.

```
.boxshadow{ -moz-box-shadow:4px 4px 4px  
4px #A98385; -webkit-box-shadow:4px 4px  
4px 4px #A98385; box-shadow:4px 4px 4px  
4px #A98385 }
```

# Background

The CSS property to change the background color of an element to Decimal 11109253 is called "background". The background property can be set on classes, ids or directly on the HTML element.

```
.background, #background, body{  
background:#A98385 }
```

If only the background color should be changed can be used:

```
.background{ background-color:#A98385 }
```

This example shows the color as background, it is applied via the CSS property "background".

To optimize and compress your CSS code, you can use our [online CSS compressor and optimizer](#) based on csstidy. If you want to create a linear or radial gradient as background or border, check our [CSS Gradient Generator](#).



Hey! You found this booklet interesting? Support Converting Colors with the new Membership Option!

The pro membership hides all ads, plus gives you double the colors in the color bucket, and more awesome pro features!

**[Learn more, Memberships starting at \\$2.50/m!](#)**

**Follow me  
on Twitter!**

@ConvertingColor