

Converting Colors

Decimal(11111277)

Have a look what the booklet for
Decimal(11111277) contains.

Decimal(11111277)	3
<i>Conversions</i>	4
<i>Details</i>	6
<i>Harmonies</i>	11
<i>Previews</i>	23
<i>Color Blindness Simulation</i>	26
<i>CSS Examples</i>	29

Color

Decimal(11111277)

Conversions

Conversions Part 1

Format	Color
Hex	A98B6D
RGB	169, 139, 109
RGB Percent	66%, 55%, 43%
CMY	0.3373, 0.4549, 0.5725
CMYK	0.00, 0.18, 0.36, 0.34
HSL	30°, 26%, 55%
HSV	30°, 36%, 66%
XYZ	28.3551, 28.0044, 18.3789
YIQ	144.5500, 27.5100, -2.9700

Conversions

Conversions Part 2

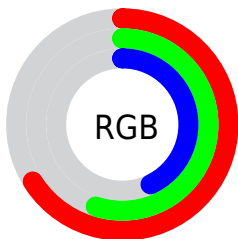
Format	Color
R_{YB}	169, 169, 109
Decimal	11111277
CIE Lab	59.89, 6.97, 20.32
CIE LCh	60, 21.481, 71.067
Yxy	28.0044, 0.3794, 0.3747
Android (android.graphics.Color)	4289301357 (0xFFA98B6D)
YUV	144.5500, -17.5261, 21.4427
Hunter-Lab	52.9192, 3.0352, 16.4519

Details

The Decimal color **11111277** is a dark color, and the websafe version is hex **CC9966**. A complement of this color would be **7179177**, and the grayscale version is **9539985**.

A 20% lighter version of the original color is **14794913**, and **7625021** is the 20% darker color. If you saturate the color by 10%, you get **11109212**, and if you desaturate by 10%, it is **11113342**.

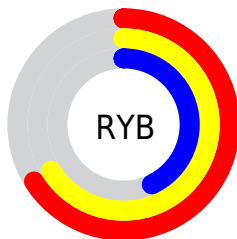
Distribution



Red (66%)

Green (55%)

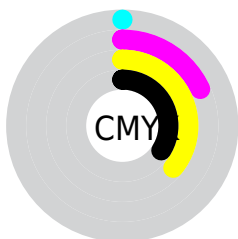
Blue (43%)



Red (66%)

Yellow (66%)

Blue (43%)

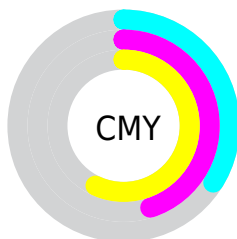


Cyan (0%)

Magenta (18%)

Yellow (36%)

Black (34%)



Cyan (34%)

Magenta (45%)

Yellow (57%)

Brightness & Saturation Gradients

These gradients show how the Decimal color 11111277 changes by changing the brightness by 10 percent. The first figure shows a shift by +10% for each color and the second figure -10%.

Similar to the brightness gradients but the following saturation gradients show a change of the Decimal color 11111277 by changing the saturation by 10% instead.



11111277



11111277

16777215



9335381



14794913



7625021



16702652



5915175



16775640



4336658



16777204



2823936



1048576



0



11111277



11111277



11109212



11113342

■ 11106891

■ 11115663

■ 11104826

■ 11117728

■ 11102505

■ 11120049

■ 11100440

■ 11122113

■ 11098120

■ 11124434

■ 11097088

■ 11126499

■ 11128820

■ 11130879

Harmonies

Analogous

The Analogous color harmony consists of three colors that are next to each other on the color wheel.



11830648



11111277



9933163

Triad

The Triadic color harmony groups three colors that are evenly spaced from another and form a triangle on the color wheel.



11111277



6134679



10258861

Complementary

The Complementary color scheme is a pair of colors which are on the opposite of each other on the color wheel.



11111277



7179177

Split Complementary

Split-complementary colors differ from the complementary color scheme. The scheme consists of three colors, the original color and two neighbors of the complement color.



8622261



11111277



6003368

Square

The Square scheme is like the rectangle color scheme, but the four colors are evenly spaced on the color wheel.



11111277



7182979



6985396



11437213

Rectangle

The Rectangle color scheme consists of four colors that form a rectangle on the color wheel.



11111277



9016688



6985396



9735089

Sweetspot

The Sweet Spot groups the original color and five complimentary colors.



11111277



14405571



11103627



7235423



15592941



7237230

Same Dimension

The Same Dimension uses a secret algorithm to generate beautiful new colors.



11111277



14396541



11118701



5525580



9718272



1313280

Inverse Universe

The Inverse Universe completely reimagines the original color for something new.



7179177



8236251



7171497



5001300



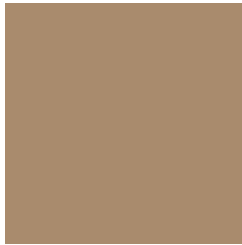
19092



2580

Previews

White Background



This preview shows how the Decimal color 11111277 looks on a white background.

Color Contrast Check

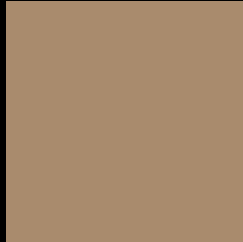
Large Text (above 18pt) WCAG AA ✓ Pass

Any Text WCAG AA × Fail

Large Text (above 18pt) WCAG AAA × Fail

Any Text WCAG AAA × Fail

Black Background



This preview shows how the Decimal color 11111277 looks on a black background.

Color Contrast Check

Large Text (above 18pt) WCAG AA ✓ Pass

Any Text WCAG AA ✓ Pass

Large Text (above 18pt) WCAG AAA ✓ Pass

Any Text WCAG AAA × Fail

If you want to check with other color combinations, try the [Color Contrast Checker](#).

Decimal 1111277 Background



This preview shows how black text looks on a background with the Decimal color 1111277.



This preview shows how white text looks on a background with the Decimal color 1111277.

Color Blindness Simulation

Color vision deficiency is a very complex topic, and I could not describe the different causes any better than Wikipedia does, so if you want to learn more, you should check out their [article about color blindness](#).

Dichromacy



Original Color

11111277

Protanopia

10129519

Deuteranopia

11176813



Tritanopia
11372177

Trichromacy



Original Color

11111277

Protanomaly

10456686

Deuteranomaly

11176813

Tritanomaly

11307140

Monochromacy



Original Color

11111277

Achromatopsia

9539985

Achromatomaly

10129284

CSS Examples

Text

The CSS property to change the color of the text to Decimal 11111277 is called "color". The color property can be set on classes, ids or directly on the HTML element.

This example shows how text in the color #A98B6D looks like.

```
.text, #text, p{  
  color:#A98B6D  
}
```

If you want to add a text shadow in that color use the text-shadow property, you can generate a text shadow directly with our [CSS Text Shadow Generator](#).

Here you see how black text with a 4 pixel #A98B6D colored shadow looks like.

```
.shadow{ text-shadow: 4px 4px 2px #A98B6D
}
```

Border

The CSS property to change the border of an element to Decimal 11111277 is called "border". The border property can be set on classes, ids or directly on the HTML element.

This example shows the color as border, it can be applied via the CSS property "border" or "border-color".

```
.border, #border, table{ border:4px solid
#A98B6D }
```

If only the border color should be changed use the property `border-color`.

```
.border{ border-color:#A98B6D }
```

If you want to add a box shadow in that color use:

Here you see how a box with a 4 pixel #A98B6D colored shadow looks like.

```
.boxshadow{ -moz-box-shadow:4px 4px 4px  
4px #A98B6D; -webkit-box-shadow:4px 4px  
4px 4px #A98B6D; box-shadow:4px 4px 4px  
4px #A98B6D }
```

Background

The CSS property to change the background color of an element to Decimal 11111277 is called "background". The background property can be set on classes, ids or directly on the HTML element.

```
.background, #background, body{  
background:#A98B6D }
```

If only the background color should be changed can be used:

```
.background{ background-color:#A98B6D }
```

This example shows the color as background, it is applied via the CSS property "background".

To optimize and compress your CSS code, you can use our [online CSS compressor and optimizer](#) based on csstidy. If you want to create a linear or radial gradient as background or border, check our [CSS Gradient Generator](#).

Hey! You found this booklet interesting? Support Converting Colors with the new Membership Option!

The pro membership hides all ads, plus gives you double the colors in the color bucket, and more awesome pro features!

[Learn more, Memberships starting at \\$2.50/m!](#)

**Follow me
on Twitter!**

@ConvertingColor