

# Converting Colors

Decimal(11172455)

Have a look what the booklet for  
Decimal(11172455) contains.

<b>Decimal(11172455)</b> .....	3
<i><b>Conversions</b></i> .....	4
<i><b>Details</b></i> .....	6
<i><b>Harmonies</b></i> .....	11
<i><b>Previews</b></i> .....	23
<i><b>Color Blindness Simulation</b></i> .....	26
<i><b>CSS Examples</b></i> .....	29

# Color

**Decimal(11172455)**

# Conversions

## Conversions Part 1

<b>Format</b>	<b>Color</b>
Hex	AA7A67
RGB	170, 122, 103
RGB Percent	67%, 48%, 40%
CMY	0.3333, 0.5216, 0.5961
CMYK	0.00, 0.28, 0.39, 0.33
HSL	17°, 28%, 54%
HSV	17°, 39%, 67%
XYZ	25.9853, 23.4444, 15.9876
YIQ	134.1860, 34.7070, 4.2670

# Conversions

## Conversions Part 2

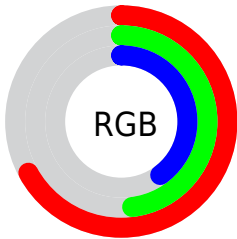
<b>Format</b>	<b>Color</b>
<b>R<sub>YB</sub></b>	170, 130, 103
Decimal	11172455
CIE <sub>Lab</sub>	55.53, 16.21, 17.81
CIE <sub>LCh</sub>	56, 24.080, 47.698
Yxy	23.4444, 0.3972, 0.3584
Android (android.graphics.Color)	4289362535 (0xFFAA7A67)
YUV	134.1860, -15.3747, 31.4089
Hunter-Lab	48.4194, 11.0618, 14.3166

# Details

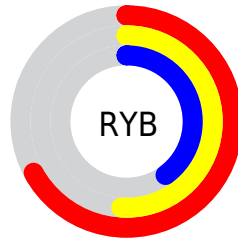
The Decimal color **11172455** is a dark color, and the websafe version is hex **996666**. A complement of this color would be **6789034**, and the grayscale version is **8816262**.

A 20% lighter version of the original color is **14921626**, and **7620920** is the 20% darker color. If you saturate the color by 10%, you get **11169366**, and if you desaturate by 10%, it is **11175544**.

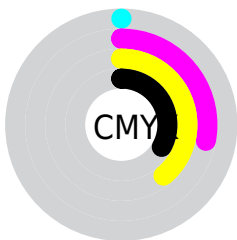
# Distribution



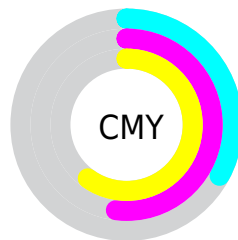
- Red (67%)
- Green (48%)
- Blue (40%)



- Red (67%)
- Yellow (51%)
- Blue (40%)



- Cyan (0%)
- Magenta (28%)
- Yellow (39%)
- Black (33%)



- Cyan (33%)
- Magenta (52%)
- Yellow (60%)

# Brightness & Saturation Gradients

These gradients show how the Decimal color 11172455 changes by changing the brightness by 10 percent. The first figure shows a shift by +10% for each color and the second figure -10%.

Similar to the brightness gradients but the following saturation gradients show a change of the Decimal color 11172455 by changing the saturation by 10% instead.



 11172455  11172455

16777215  9396559

 14921626  7620920

 16763573  5911074

 16770769  4267277

 16777197  2688512

 0

 11172455  11172455

 11169366  11175544

 11166277  11178633

■ 11162932

■ 11181978

■ 11159843

■ 11185067

■ 11156754

■ 11188156

■ 11153665

■ 11191245

■ 11153408

■ 11194334

■ 11197423

■ 11200767

# Harmonies

## Analogous

The Analogous color harmony consists of three colors that are next to each other on the color wheel.



11499129



11172455



10256732

# Triad

The Triadic color harmony groups three colors that are evenly spaced from another and form a triangle on the color wheel.



11172455



5804155



8160173

# Complementary

The Complementary color scheme is a pair of colors which are on the opposite of each other on the color wheel.



11172455



6789034

# Split Complementary

Split-complementary colors differ from the complementary color scheme. The scheme consists of three colors, the original color and two neighbors of the complement color.



6195885



11172455



4624785

# Square

The Square scheme is like the rectangle color scheme, but the four colors are evenly spaced on the color wheel.



11172455



7310696



4689571



9927585

# Rectangle

The Rectangle color scheme consists of four colors that form a rectangle on the color wheel.



11172455



9340251



4689571



7505326



# Sweetspot

The Sweet Spot groups the original color and five complimentary colors.



11172455



14601155



11167639



7365984



15790320



7368816



# Same Dimension

The Same Dimension uses a secret algorithm to generate beautiful new colors.



11172455



14586742



11180903



5525068



9710080



1312256



# Inverse Universe

The Inverse Universe completely reimagines the original color for something new.



6789034



7782622



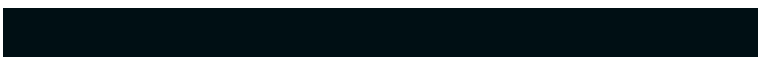
6780586



5001812



27284



3860



# Previews

## White Background



This preview shows how the Decimal color 11172455 looks on a white background.

## Color Contrast Check

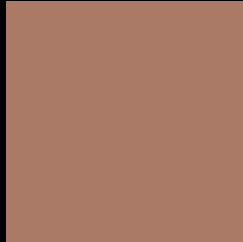
Large Text (above 18pt) WCAG AA ✓ Pass

Any Text WCAG AA ✗ Fail

Large Text (above 18pt) WCAG AAA ✗ Fail

Any Text WCAG AAA ✗ Fail

# Black Background



This preview shows how the Decimal color 11172455 looks on a black background.

## Color Contrast Check

Large Text (above 18pt) WCAG AA ✓ Pass

Any Text WCAG AA ✓ Pass

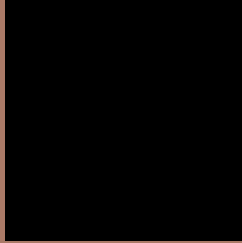
Large Text (above 18pt) WCAG AAA ✓ Pass

Any Text WCAG AAA × Fail

If you want to check with other color combinations, try the [Color Contrast Checker](#).



## Decimal 11172455 Background



This preview shows how black text looks on a background with the Decimal color 11172455.



This preview shows how white text looks on a background with the Decimal color 11172455.

# Color Blindness Simulation

Color vision deficiency is a very complex topic, and I could not describe the different causes any better than Wikipedia does, so if you want to learn more, you should check out their [article about color blindness](#).

## Dichromacy





**Tritanopia**  
11302784

# Trichromacy



**Original Color**  
11172455

**Protanomaly**  
9994602

**Deuteranomaly**  
10649190

**Tritanomaly**  
11237495

# Monochromacy



**Original Color**  
11172455

**Achromatopsia**  
8816262

**Achromatomaly**  
9667195

# CSS Examples

## Text

The CSS property to change the color of the text to Decimal 11172455 is called "color". The color property can be set on classes, ids or directly on the HTML element.

This example shows how text in the color #AA7A67 looks like.

```
.text, #text, p{  
    color:#AA7A67  
}
```

If you want to add a text shadow in that color use the text-shadow property, you can generate a text shadow directly with our [CSS Text Shadow Generator](#).

Here you see how black text with a 4 pixel #AA7A67 colored shadow looks like.

```
.shadow{ text-shadow: 4px 4px 2px #AA7A67
}
```

## Border

The CSS property to change the border of an element to Decimal 11172455 is called "border". The border property can be set on classes, ids or directly on the HTML element.

This example shows the color as border, it can be applied via the CSS property "border" or "border-color".

```
.border, #border, table{ border:4px solid
#AA7A67 }
```

If only the border color should be changed use the property `border-color`.

```
.border{ border-color:#AA7A67 }
```

If you want to add a box shadow in that color use:

Here you see how a box with a 4 pixel #AA7A67 colored shadow looks like.

```
.boxshadow{ -moz-box-shadow:4px 4px 4px  
4px #AA7A67; -webkit-box-shadow:4px 4px  
4px 4px #AA7A67; box-shadow:4px 4px 4px  
4px #AA7A67 }
```

# Background

The CSS property to change the background color of an element to Decimal 11172455 is called "background". The background property can be set on classes, ids or directly on the HTML element.

```
.background, #background, body{  
background:#AA7A67 }
```

If only the background color should be changed can be used:

```
.background{ background-color:#AA7A67 }
```

This example shows the color as background, it is applied via the CSS property "background".

To optimize and compress your CSS code, you can use our [online CSS compressor and optimizer](#) based on csstidy. If you want to create a linear or radial gradient as background or border, check our [CSS Gradient Generator](#).



Hey! You found this booklet interesting? Support Converting Colors with the new Membership Option!

The pro membership hides all ads, plus gives you double the colors in the color bucket, and more awesome pro features!

**[Learn more, Memberships starting at \\$2.50/m!](#)**

**Follow me  
on Twitter!**

@ConvertingColor