

Converting Colors

Decimal(11173718)

Have a look what the booklet for
Decimal(11173718) contains.

Decimal(11173718)	3
<i>Conversions</i>	4
<i>Details</i>	6
<i>Harmonies</i>	11
<i>Previews</i>	23
<i>Color Blindness Simulation</i>	26
<i>CSS Examples</i>	29

Color

Decimal(11173718)

Conversions

Conversions Part 1

Format	Color
Hex	AA7F56
RGB	170, 127, 86
RGB Percent	67%, 50%, 34%
CMY	0.3333, 0.5020, 0.6627
CMYK	0.00, 0.25, 0.49, 0.33
HSL	29°, 33%, 50%
HSV	29°, 49%, 67%
XYZ	25.8466, 24.3967, 12.1509
YIQ	135.1830, 38.7890, -3.6350

Conversions

Conversions Part 2

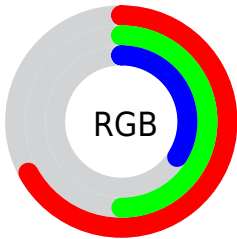
Format	Color
RYB	170, 166, 86
Decimal	11173718
CIELab	56.48, 11.51, 28.68
CIELCh	56, 30.904, 68.134
Yxy	24.3967, 0.4142, 0.3910
Android (android.graphics.Color)	4289363798 (0xFFAA7F56)
YUV	135.1830, -24.2472, 30.5345
Hunter-Lab	49.3930, 6.9688, 19.9895

Details

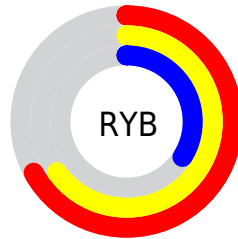
The Decimal color **11173718** is a dark color, and the websafe version is hex **CC9966**. A complement of this color would be **5669290**, and the grayscale version is **8882055**.

A 20% lighter version of the original color is **14922888**, and **7556648** is the 20% darker color. If you saturate the color by 10%, you get **11171397**, and if you desaturate by 10%, it is **11176039**.

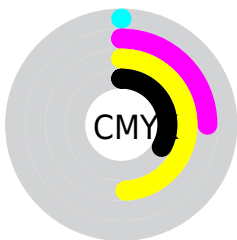
Distribution



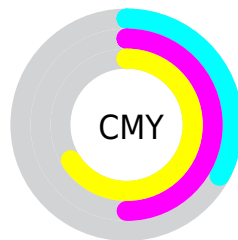
- Red (67%)
- Green (50%)
- Blue (34%)



- Red (67%)
- Yellow (65%)
- Blue (34%)



- Cyan (0%)
- Magenta (25%)
- Yellow (49%)
- Black (33%)



- Cyan (33%)
- Magenta (50%)
- Yellow (66%)

Brightness & Saturation Gradients


These gradients show how the Decimal color 11173718 changes by changing the brightness by 10 percent. The first figure shows a shift by +10% for each color and the second figure -10%.

Similar to the brightness gradients but the following saturation gradients show a change of the Decimal color 11173718 by changing the saturation by 10% instead.

 11173718  11173718

16777215  9332286

 14922888  7556648

 16764835  5846802

 16772286  4202752

 16777178  2559232

 16777207  0

 11173718  11173718

 11171397  11176039

 11169332  11178104

■ 11167011

■ 11180425

■ 11164690

■ 11182746

■ 11162369

■ 11185067

■ 11162368

■ 11187132

■ 11189453

■ 11191774

■ 11193839

Harmonies

Analogous

The Analogous color harmony consists of three colors that are next to each other on the color wheel.



12154728



11173718



9603154

Triad

The Triadic color harmony groups three colors that are evenly spaced from another and form a triangle on the color wheel.



11173718



3184270



9731762

Complementary

The Complementary color scheme is a pair of colors which are on the opposite of each other on the color wheel.



11173718



5669290

Split Complementary

Split-complementary colors differ from the complementary color scheme. The scheme consists of three colors, the original color and two neighbors of the complement color.



7178428



11173718



1873064

Square

The Square scheme is like the rectangle color scheme, but the four colors are evenly spaced on the color wheel.



11173718



5543027



4165817



11499164

Rectangle

The Rectangle color scheme consists of four colors that form a rectangle on the color wheel.



11173718



8359255



4165817



8946103

Sweetspot

The Sweet Spot groups the original color and five complimentary colors.



11173718



14601661



11163265



7366236



15790320



7368816

Same Dimension

The Same Dimension uses a secret algorithm to generate beautiful new colors.



11173718



14588763



11184470



5525580



9717760



1313280

Inverse Universe

The Inverse Universe completely reimagines the original color for something new.



5669290



6004446



5658538



5001300



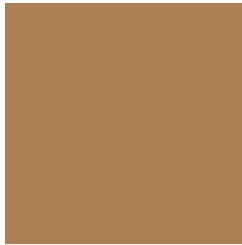
19604



2580

Previews

White Background



This preview shows how the Decimal color 11173718 looks on a white background.

Color Contrast Check

Large Text (above 18pt) WCAG AA ✓ Pass

Any Text WCAG AA × Fail

Large Text (above 18pt) WCAG AAA × Fail

Any Text WCAG AAA × Fail

Black Background



This preview shows how the Decimal color 11173718 looks on a black background.

Color Contrast Check

Large Text (above 18pt) WCAG AA ✓ Pass

Any Text WCAG AA ✓ Pass

Large Text (above 18pt) WCAG AAA ✓ Pass

Any Text WCAG AAA × Fail

If you want to check with other color combinations, try the [Color Contrast Checker](#).

Decimal 11173718 Background



This preview shows how black text looks on a background with the Decimal color 11173718.



This preview shows how white text looks on a background with the Decimal color 11173718.

Color Blindness Simulation

Color vision deficiency is a very complex topic, and I could not describe the different causes any better than Wikipedia does, so if you want to learn more, you should check out their [article about color blindness](#).


Dichromacy



Original Color
11173718

Protanopia
9668697

Deuteranopia
10781269



Tritanopia
11434371

Trichromacy



Original Color
11173718

Protanomaly
10192216

Deuteranomaly
10912085

Tritanomaly
11369331

Monochromacy



Original Color
11173718

Achromatopsia
8882055

Achromatomaly
9733237

CSS Examples

Text

The CSS property to change the color of the text to Decimal 11173718 is called "color". The color property can be set on classes, ids or directly on the HTML element.

This example shows how text in the color #AA7F56 looks like.

```
.text, #text, p{  
    color:#AA7F56  
}
```

If you want to add a text shadow in that color use the text-shadow property, you can generate a text shadow directly with our [CSS Text Shadow Generator](#).

Here you see how black text with a 4 pixel #AA7F56 colored shadow looks like.

```
.shadow{ text-shadow: 4px 4px 2px #AA7F56
}
```

Border

The CSS property to change the border of an element to Decimal 11173718 is called "border". The border property can be set on classes, ids or directly on the HTML element.

This example shows the color as border, it can be applied via the CSS property "border" or "border-color".

```
.border, #border, table{ border:4px solid
#AA7F56 }
```

If only the border color should be changed use the property `border-color`.

```
.border{ border-color:#AA7F56 }
```

If you want to add a box shadow in that color use:

Here you see how a box with a 4 pixel #AA7F56 colored shadow looks like.

```
.boxshadow{ -moz-box-shadow:4px 4px 4px  
4px #AA7F56; -webkit-box-shadow:4px 4px  
4px 4px #AA7F56; box-shadow:4px 4px 4px  
4px #AA7F56 }
```

Background

The CSS property to change the background color of an element to Decimal 11173718 is called "background". The background property can be set on classes, ids or directly on the HTML element.

```
.background, #background, body{  
background:#AA7F56 }
```

If only the background color should be changed can be used:

```
.background{ background-color:#AA7F56 }
```

This example shows the color as background, it is applied via the CSS property "background".

To optimize and compress your CSS code, you can use our [online CSS compressor and optimizer](#) based on csstidy. If you want to create a linear or radial gradient as background or border, check our [CSS Gradient Generator](#).

Hey! You found this booklet interesting? Support Converting Colors with the new Membership Option!

The pro membership hides all ads, plus gives you double the colors in the color bucket, and more awesome pro features!

[Learn more, Memberships starting at \\$2.50/m!](#)

**Follow me
on Twitter!**

@ConvertingColor