

# Converting Colors

Decimal(11173729)

Have a look what the booklet for  
Decimal(11173729) contains.

<b>Decimal(11173729)</b> .....	3
<i><b>Conversions</b></i> .....	4
<i><b>Details</b></i> .....	6
<i><b>Harmonies</b></i> .....	11
<i><b>Previews</b></i> .....	23
<i><b>Color Blindness Simulation</b></i> .....	26
<i><b>CSS Examples</b></i> .....	29

# Color

**Decimal(11173729)**

# Conversions

## Conversions Part 1

<b>Format</b>	<b>Color</b>
Hex	AA7F61
RGB	170, 127, 97
RGB Percent	67%, 50%, 38%
CMY	0.3333, 0.5020, 0.6196
CMYK	0.00, 0.25, 0.43, 0.33
HSL	25°, 30%, 52%
HSV	25°, 43%, 67%
XYZ	26.3246, 24.5879, 14.6677
YIQ	136.4370, 35.2580, -0.2140

# Conversions

## Conversions Part 2

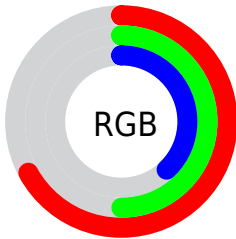
<b>Format</b>	<b>Color</b>
<b>RYB</b>	170, 148, 97
Decimal	11173729
CIELab	56.67, 12.68, 22.77
CIELCh	57, 26.063, 60.888
Yxy	24.5879, 0.4014, 0.3749
Android (android.graphics.Color)	4289363809 (0xFFAA7F61)
YUV	136.4370, -19.4424, 29.4348
Hunter-Lab	49.5861, 7.9874, 17.1721

# Details

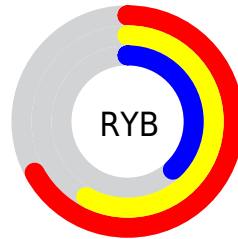
The Decimal color **11173729** is a dark color, and the websafe version is hex **CC9966**. A complement of this color would be **6393002**, and the grayscale version is **9013641**.

A 20% lighter version of the original color is **14922900**, and **7622194** is the 20% darker color. If you saturate the color by 10%, you get **11171152**, and if you desaturate by 10%, it is **11176306**.

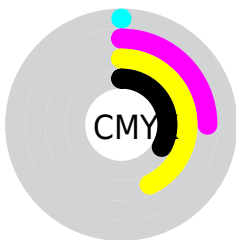
# Distribution



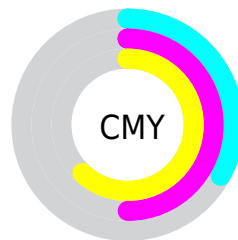
- Red (67%)
- Green (50%)
- Blue (38%)



- Red (67%)
- Yellow (58%)
- Blue (38%)



- Cyan (0%)
- Magenta (25%)
- Yellow (43%)
- Black (33%)



- Cyan (33%)
- Magenta (50%)
- Yellow (62%)

# Brightness & Saturation Gradients

These gradients show how the Decimal color 11173729 changes by changing the brightness by 10 percent. The first figure shows a shift by +10% for each color and the second figure -10%.

Similar to the brightness gradients but the following saturation gradients show a change of the Decimal color 11173729 by changing the saturation by 10% instead.



 11173729  11173729

16777215  9397833

 14922900  7622194


 16764847  5912348

 16772298  4268293

 16777190  2690304

 0

 11173729  11173729

 11171152  11176306

 11168575  11178883

■ 11165998

■ 11181460

■ 11163421

■ 11184037

■ 11160844

■ 11186614

■ 11159040

■ 11189191

■ 11191768

■ 11194345

■ 11196922

# Harmonies

## Analogous

The Analogous color harmony consists of three colors that are next to each other on the color wheel.



11827570



11173729



9930586

# Triad

The Triadic color harmony groups three colors that are evenly spaced from another and form a triangle on the color wheel.



11173729



4953224



9208495

# Complementary

The Complementary color scheme is a pair of colors which are on the opposite of each other on the color wheel.



11173729



6393002

# Split Complementary

Split-complementary colors differ from the complementary color scheme. The scheme consists of three colors, the original color and two neighbors of the complement color.



7047861



11173729



4101278

# Square

The Square scheme is like the rectangle color scheme, but the four colors are evenly spaced on the color wheel.



11173729



6656625



4952239



10845086

# Rectangle

The Rectangle color scheme consists of four colors that form a rectangle on the color wheel.



11173729



8883037



4952239



8488370



# Sweetspot

The Sweet Spot groups the original color and five complimentary colors.



11173729



14601665



11166093



7366238



15790320



7368816



# Same Dimension

The Same Dimension uses a secret algorithm to generate beautiful new colors.



11173729



14588522



11182945



5525324



9714944



1312768



# Inverse Universe

The Inverse Universe completely reimagines the original color for something new.



6393002



6991582



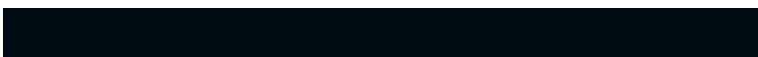
6383786



5001556



22420

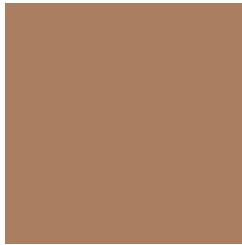


3092



# Previews

## White Background



This preview shows how the Decimal color 11173729 looks on a white background.

## Color Contrast Check

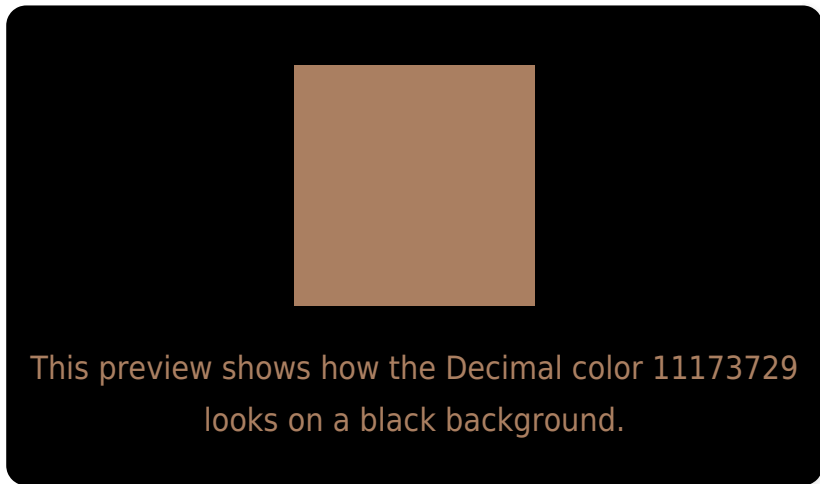
Large Text (above 18pt) WCAG AA ✓ Pass

Any Text WCAG AA × Fail

Large Text (above 18pt) WCAG AAA × Fail

Any Text WCAG AAA × Fail

# Black Background



## Color Contrast Check

Large Text (above 18pt) WCAG AA ✓ Pass

Any Text WCAG AA ✓ Pass

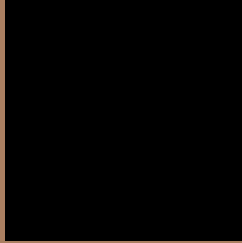
Large Text (above 18pt) WCAG AAA ✓ Pass

Any Text WCAG AAA × Fail

If you want to check with other color combinations, try the [Color Contrast Checker](#).



## Decimal 11173729 Background



This preview shows how black text looks on a background with the Decimal color 11173729.



This preview shows how white text looks on a background with the Decimal color 11173729.

# Color Blindness Simulation

Color vision deficiency is a very complex topic, and I could not describe the different causes any better than Wikipedia does, so if you want to learn more, you should check out their [article about color blindness](#).

## Dichromacy



**Original Color**


11173729

**Protanopia**

9603173

**Deuteranopia**

10650208



**Tritanopia**  
11369092

# Trichromacy



**Original Color**  
11173729

**Protanomaly**  
10192228

**Deuteranomaly**  
10846560

**Tritanomaly**  
11304055

# Monochromacy



**Original Color**  
11173729

**Achromatopsia**  
8947848

**Achromatomaly**  
9733498

# CSS Examples

## Text

The CSS property to change the color of the text to Decimal 11173729 is called "color". The color property can be set on classes, ids or directly on the HTML element.

This example shows how text in the color #AA7F61 looks like.

```
.text, #text, p{  
    color:#AA7F61  
}
```

If you want to add a text shadow in that color use the text-shadow property, you can generate a text shadow directly with our [CSS Text Shadow Generator](#).

Here you see how black text with a 4 pixel #AA7F61 colored shadow looks like.

```
.shadow{ text-shadow: 4px 4px 2px #AA7F61  
}
```

## Border

The CSS property to change the border of an element to Decimal 11173729 is called "border". The border property can be set on classes, ids or directly on the HTML element.

This example shows the color as border, it can be applied via the CSS property "border" or "border-color".

```
.border, #border, table{ border:4px solid  
#AA7F61 }
```

If only the border color should be changed use the property `border-color`.

```
.border{ border-color:#AA7F61 }
```

If you want to add a box shadow in that color use:

Here you see how a box with a 4 pixel #AA7F61 colored shadow looks like.

```
.boxshadow{ -moz-box-shadow:4px 4px 4px  
4px #AA7F61; -webkit-box-shadow:4px 4px  
4px 4px #AA7F61; box-shadow:4px 4px 4px  
4px #AA7F61 }
```

# Background

The CSS property to change the background color of an element to Decimal 11173729 is called "background". The background property can be set on classes, ids or directly on the HTML element.

```
.background, #background, body{  
background:#AA7F61 }
```

If only the background color should be changed can be used:

```
.background{ background-color:#AA7F61 }
```

This example shows the color as background, it is applied via the CSS property "background".

To optimize and compress your CSS code, you can use our [online CSS compressor and optimizer](#) based on csstidy. If you want to create a linear or radial gradient as background or border, check our [CSS Gradient Generator](#).



Hey! You found this booklet interesting? Support Converting Colors with the new Membership Option!

The pro membership hides all ads, plus gives you double the colors in the color bucket, and more awesome pro features!

**[Learn more, Memberships starting at \\$2.50/m!](#)**

**Follow me  
on Twitter!**

@ConvertingColor