

Converting Colors

Decimal(11239552)

Have a look what the booklet for
Decimal(11239552) contains.

Decimal(11239552)	3
<i>Conversions</i>	4
<i>Details</i>	6
<i>Harmonies</i>	11
<i>Previews</i>	23
<i>Color Blindness Simulation</i>	26
<i>CSS Examples</i>	29

Color

Decimal(11239552)

Conversions

Conversions Part 1

Format	Color
Hex	AB8080
RGB	171, 128, 128
RGB Percent	67%, 50%, 50%
CMY	0.3294, 0.4980, 0.4980
CMYK	0.00, 0.25, 0.25, 0.33
HSL	0°, 20%, 59%
HSV	0°, 25%, 67%
XYZ	28.4100, 25.6548, 23.8766
YIQ	140.8570, 25.6280, 9.1160

Conversions

Conversions Part 2

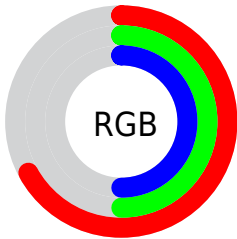
Format	Color
R_{YB}	171, 128, 128
Decimal	11239552
CIE _{Lab}	57.71, 16.60, 6.48
CIE _{LCh}	58, 17.821, 21.312
Yxy	25.6548, 0.3645, 0.3292
Android (android.graphics.Color)	4289429632 (0xFFAB8080)
YUV	140.8570, -6.3385, 26.4354
Hunter-Lab	50.6506, 11.4827, 7.5062

Details

The Decimal color **11239552** is a dark color, and the websafe version is hex **996666**. A complement of this color would be **8432555**, and the grayscale version is **9276813**.

A 20% lighter version of the original color is **14923189**, and **7753551** is the 20% darker color. If you saturate the color by 10%, you get **11235183**, and if you desaturate by 10%, it is **11243921**.

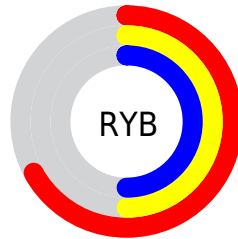
Distribution



Red (67%)

Green (50%)

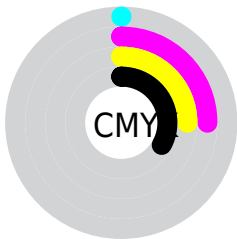
Blue (50%)



Red (67%)

Yellow (50%)

Blue (50%)

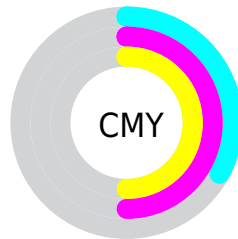


Cyan (0%)

Magenta (25%)

Yellow (25%)

Black (33%)



Cyan (33%)

Magenta (50%)

Yellow (50%)

Brightness & Saturation Gradients

These gradients show how the Decimal color 11239552 changes by changing the brightness by 10 percent. The first figure shows a shift by +10% for each color and the second figure -10%.

Similar to the brightness gradients but the following saturation gradients show a change of the Decimal color 11239552 by changing the saturation by 10% instead.



11239552



11239552

16777215



9463655



14923189



7753551



16765392



6043448



16772589



4464931



2952461



1048576



0



11239552



11239552



11235183



11243921

 11230814

 11248290

 11226445

 11252659


 11222076

 11257028

 11217707

 11261397

 11213081

 11266023

 11208712

 11270392

 11206656

 11272191

Harmonies

Analogous

The Analogous color harmony consists of three colors that are next to each other on the color wheel.



10977424



11239552



10912627

Triad

The Triadic color harmony groups three colors that are evenly spaced from another and form a triangle on the color wheel.



11239552



7967095



7572905

Complementary

The Complementary color scheme is a pair of colors which are on the opposite of each other on the color wheel.



11239552



8432555

Split Complementary

Split-complementary colors differ from the complementary color scheme. The scheme consists of three colors, the original color and two neighbors of the complement color.



6525346



11239552



6919045

Square

The Square scheme is like the rectangle color scheme, but the four colors are evenly spaced on the color wheel.



11239552



9145710



6329237



8882343

Rectangle

The Rectangle color scheme consists of four colors that form a rectangle on the color wheel.



11239552



10454638



6329237



7180200

Sweetspot

The Sweet Spot groups the original color and five complimentary colors.



11239552



14601420



11239595



7365989



15790320



7368816

Same Dimension

The Same Dimension uses a secret algorithm to generate beautiful new colors.



11239552



14588827



11244928



5721678



9830400



1507328

Inverse Universe

The Inverse Universe completely reimagines the original color for something new.



8432555



10215134



8426923



5134167



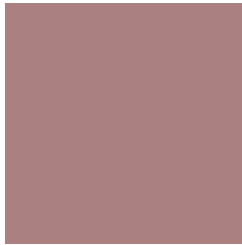
38550



5911

Previews

White Background



This preview shows how the Decimal color 11239552 looks on a white background.

Color Contrast Check

Large Text (above 18pt) WCAG AA ✓ Pass

Any Text WCAG AA × Fail

Large Text (above 18pt) WCAG AAA × Fail

Any Text WCAG AAA × Fail

Black Background



This preview shows how the Decimal color 11239552 looks on a black background.

Color Contrast Check

Large Text (above 18pt) WCAG AA ✓ Pass

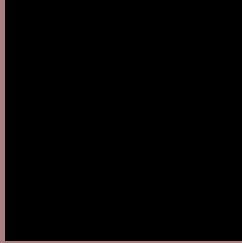
Any Text WCAG AA ✓ Pass

Large Text (above 18pt) WCAG AAA ✓ Pass

Any Text WCAG AAA × Fail

If you want to check with other color combinations, try the [Color Contrast Checker](#).

Decimal 11239552 Background



This preview shows how black text looks on a background with the Decimal color 11239552.




This preview shows how white text looks on a background with the Decimal color 11239552.

Color Blindness Simulation

Color vision deficiency is a very complex topic, and I could not describe the different causes any better than Wikipedia does, so if you want to learn more, you should check out their [article about color blindness](#).

Dichromacy





Tritanopia
11304840

Trichromacy



Original Color
11239552

Protanomaly
10061444

Deuteranomaly
10650751

Tritanomaly
11304837

Monochromacy



Original Color
11239552

Achromatopsia
9276813

Achromatomaly
9996424

CSS Examples

Text

The CSS property to change the color of the text to Decimal 11239552 is called "color". The color property can be set on classes, ids or directly on the HTML element.

This example shows how text in the color #AB8080 looks like.

```
.text, #text, p{  
    color:#AB8080  
}
```

If you want to add a text shadow in that color use the text-shadow property, you can generate a text shadow directly with our [CSS Text Shadow Generator](#).

Here you see how black text with a 4 pixel #AB8080 colored shadow looks like.

```
.shadow{ text-shadow: 4px 4px 2px #AB8080
}
```

Border

The CSS property to change the border of an element to Decimal 11239552 is called "border". The border property can be set on classes, ids or directly on the HTML element.

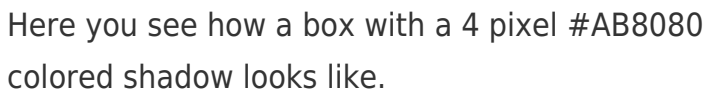
This example shows the color as border, it can be applied via the CSS property "border" or "border-color".

```
.border, #border, table{ border:4px solid
#AB8080 }
```

If only the border color should be changed use the property `border-color`.

```
.border{ border-color:#AB8080 }
```

If you want to add a box shadow in that color use:



Here you see how a box with a 4 pixel `#AB8080` colored shadow looks like.

```
.boxshadow{ -moz-box-shadow:4px 4px 4px  
4px #AB8080; -webkit-box-shadow:4px 4px  
4px 4px #AB8080; box-shadow:4px 4px 4px  
4px #AB8080 }
```

Background

The CSS property to change the background color of an element to Decimal 11239552 is called "background". The background property can be set on classes, ids or directly on the HTML element.

```
.background, #background, body{  
background:#AB8080 }
```

If only the background color should be changed can be used:

```
.background{ background-color:#AB8080 }
```

This example shows the color as background, it is applied via the CSS property "background".

To optimize and compress your CSS code, you can use our [online CSS compressor and optimizer](#) based on csstidy. If you want to create a linear or radial gradient as background or border, check our [CSS Gradient Generator](#).

Hey! You found this booklet interesting? Support Converting Colors with the new Membership Option!

The pro membership hides all ads, plus gives you double the colors in the color bucket, and more awesome pro features!

[Learn more, Memberships starting at \\$2.50/m!](#)

**Follow me
on Twitter!**

@ConvertingColor