

# Converting Colors

Decimal(11240308)

Have a look what the booklet for  
Decimal(11240308) contains.

<b>Decimal(11240308)</b> .....	3
<b><i>Conversions</i></b> .....	4
<b><i>Details</i></b> .....	6
<b><i>Harmonies</i></b> .....	11
<b><i>Previews</i></b> .....	23
<b><i>Color Blindness Simulation</i></b> .....	26
<b><i>CSS Examples</i></b> .....	29

# Color

**Decimal(11240308)**

# Conversions

## Conversions Part 1

<b>Format</b>	<b>Color</b>
Hex	AB8374
RGB	171, 131, 116
RGB Percent	67%, 51%, 45%
CMY	0.3294, 0.4863, 0.5451
CMYK	0.00, 0.23, 0.32, 0.33
HSL	16°, 25%, 56%
HSV	16°, 32%, 67%
XYZ	28.0633, 26.1515, 20.0916
YIQ	141.2500, 28.6550, 3.8150

# Conversions

## Conversions Part 2

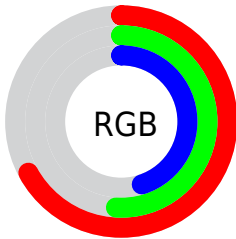
<b>Format</b>	<b>Color</b>
<b>R<sub>YB</sub></b>	171, 137, 116
Decimal	11240308
CIE Lab	58.18, 13.20, 14.03
CIE LCh	58, 19.266, 46.757
Yxy	26.1515, 0.3777, 0.3519
Android (android.graphics.Color)	4289430388 (0xFFAB8374)
YUV	141.2500, -12.4482, 26.0908
Hunter-Lab	51.1385, 8.4630, 12.5027

# Details

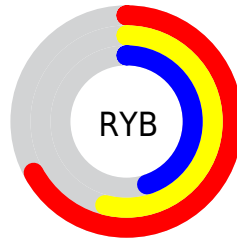
The Decimal color **11240308** is a dark color, and the websafe version is hex **CC9999**. A complement of this color would be **7642283**, and the grayscale version is **9276813**.

A 20% lighter version of the original color is **14923944**, and **7754052** is the 20% darker color. If you saturate the color by 10%, you get **11237219**, and if you desaturate by 10%, it is **11243397**.

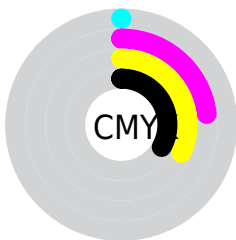
# Distribution



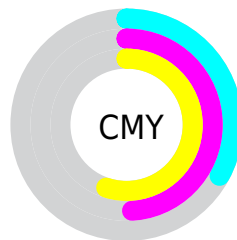
- Red (67%)
- Green (51%)
- Blue (45%)



- Red (67%)
- Yellow (54%)
- Blue (45%)



- Cyan (0%)
- Magenta (23%)
- Yellow (32%)
- Black (33%)



- Cyan (33%)
- Magenta (49%)
- Yellow (55%)

# Brightness & Saturation Gradients

These gradients show how the Decimal color 11240308 changes by changing the brightness by 10 percent. The first figure shows a shift by +10% for each color and the second figure -10%.

Similar to the brightness gradients but the following saturation gradients show a change of the Decimal color 11240308 by changing the saturation by 10% instead.





11240308



11240308

16777215



9464411



14923944



7754052



16766147



6044206



16773343



4400153

16777212



2953216



917504



0



11240308



11240308



11237219



11243397

 11233874

 11246742

 11230785

 11249831

 11227440

 11253176

 11224350

 11256265

 11221005

 11259611

 11218688

 11262700

 11265789

 11269119

# Harmonies

## Analogous

The Analogous color harmony consists of three colors that are next to each other on the color wheel.



11501699



11240308



10455147

# Triad

The Triadic color harmony groups three colors that are evenly spaced from another and form a triangle on the color wheel.



11240308



6919556



8751788

# Complementary

The Complementary color scheme is a pair of colors which are on the opposite of each other on the color wheel.



11240308



7642283

# Split Complementary

Split-complementary colors differ from the complementary color scheme. The scheme consists of three colors, the original color and two neighbors of the complement color.



7245996



11240308



6133141

# Square

The Square scheme is like the rectangle color scheme, but the four colors are evenly spaced on the color wheel.



11240308



8098420



6263972



10126499

# Rectangle

The Rectangle color scheme consists of four colors that form a rectangle on the color wheel.



11240308



9800810



6263972



8228013



# Sweetspot

The Sweet Spot groups the original color and five complimentary colors.



11240308



14601928



11236508



7366243



15790320



7368816



# Same Dimension

The Same Dimension uses a secret algorithm to generate beautiful new colors.



11240308



14589831



11247220



5722190



9840896



1508864



# Inverse Universe

The Inverse Universe completely reimagines the original color for something new.



7642283



8898270



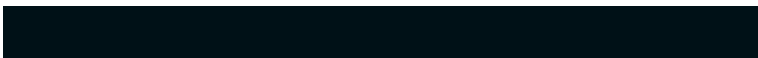
7635371



5133399



28054



4375



# Previews

## White Background



This preview shows how the Decimal color 11240308 looks on a white background.

## Color Contrast Check

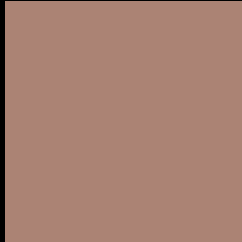
Large Text (above 18pt) WCAG AA ✓ Pass

Any Text WCAG AA × Fail

Large Text (above 18pt) WCAG AAA × Fail

Any Text WCAG AAA × Fail

# Black Background



This preview shows how the Decimal color 11240308 looks on a black background.

## Color Contrast Check

Large Text (above 18pt) WCAG AA ✓ Pass

Any Text WCAG AA ✓ Pass

Large Text (above 18pt) WCAG AAA ✓ Pass

Any Text WCAG AAA × Fail

If you want to check with other color combinations, try the [Color Contrast Checker](#).



## Decimal 11240308 Background



This preview shows how black text looks on a background with the Decimal color 11240308.



This preview shows how white text looks on a background with the Decimal color 11240308.

# Color Blindness Simulation

Color vision deficiency is a very complex topic, and I could not describe the different causes any better than Wikipedia does, so if you want to learn more, you should check out their [article about color blindness](#).

## Dichromacy





**Tritanopia**  
11370634

# Trichromacy



**Original Color**  
11240308

**Protanomaly**  
10258807

**Deuteranomaly**  
10847859

**Tritanomaly**  
11305346

# Monochromacy



**Original Color**  
11240308

**Achromatopsia**  
9276813

**Achromatomaly**  
9996676

# CSS Examples

## Text

The CSS property to change the color of the text to Decimal 11240308 is called "color". The color property can be set on classes, ids or directly on the HTML element.

This example shows how text in the color #AB8374 looks like.

```
.text, #text, p{  
  color:#AB8374  
}
```

If you want to add a text shadow in that color use the text-shadow property, you can generate a text shadow directly with our [CSS Text Shadow Generator](#).

Here you see how black text with a 4 pixel #AB8374 colored shadow looks like.

```
.shadow{ text-shadow: 4px 4px 2px #AB8374
}
```

## Border

The CSS property to change the border of an element to Decimal 11240308 is called "border". The border property can be set on classes, ids or directly on the HTML element.

This example shows the color as border, it can be applied via the CSS property "border" or "border-color".

```
.border, #border, table{ border:4px solid
#AB8374 }
```

If only the border color should be changed use the property border-color.

```
.border{ border-color:#AB8374 }
```

If you want to add a box shadow in that color use:

Here you see how a box with a 4 pixel #AB8374 colored shadow looks like.

```
.boxshadow{ -moz-box-shadow:4px 4px 4px  
4px #AB8374; -webkit-box-shadow:4px 4px  
4px 4px #AB8374; box-shadow:4px 4px 4px  
4px #AB8374 }
```

# Background

The CSS property to change the background color of an element to Decimal 11240308 is called "background". The background property can be set on classes, ids or directly on the HTML element.

```
.background, #background, body{  
background:#AB8374 }
```

If only the background color should be changed can be used:

```
.background{ background-color:#AB8374 }
```

This example shows the color as background, it is applied via the CSS property "background".

To optimize and compress your CSS code, you can use our [online CSS compressor and optimizer](#) based on csstidy. If you want to create a linear or radial gradient as background or border, check our [CSS Gradient Generator](#).



Hey! You found this booklet interesting? Support Converting Colors with the new Membership Option!

The pro membership hides all ads, plus gives you double the colors in the color bucket, and more awesome pro features!

**[Learn more, Memberships starting at \\$2.50/m!](#)**

**Follow me  
on Twitter!**

@ConvertingColor