

# Converting Colors

Decimal(11241351)

Have a look what the booklet for  
Decimal(11241351) contains.

<b>Decimal(11241351)</b> .....	3
<i><b>Conversions</b></i> .....	4
<i><b>Details</b></i> .....	6
<i><b>Harmonies</b></i> .....	11
<i><b>Previews</b></i> .....	23
<i><b>Color Blindness Simulation</b></i> .....	26
<i><b>CSS Examples</b></i> .....	29

# Color

**Decimal(11241351)**

# Conversions

## Conversions Part 1

<b>Format</b>	<b>Color</b>
Hex	AB8787
RGB	171, 135, 135
RGB Percent	67%, 53%, 53%
CMY	0.3294, 0.4706, 0.4706
CMYK	0.00, 0.21, 0.21, 0.33
HSL	0°, 18%, 60%
HSV	0°, 21%, 67%
XYZ	29.8317, 27.7351, 26.7028
YIQ	145.7640, 21.4560, 7.6320

# Conversions

## Conversions Part 2

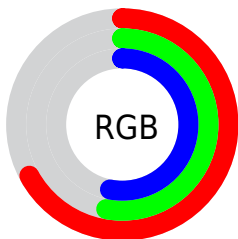
<b>Format</b>	<b>Color</b>
<b>RYB</b>	171, 135, 135
Decimal	11241351
CIELab	59.65, 13.72, 5.24
CIELCh	60, 14.690, 20.903
Yxy	27.7351, 0.3540, 0.3291
Android (android.graphics.Color)	4289431431 (0xFFAB8787)
YUV	145.7640, -5.3067, 22.1320
Hunter-Lab	52.6642, 8.9494, 6.8026

# Details

The Decimal color **11241351** is a dark color, and the websafe version is hex **CC9999**. A complement of this color would be **8891307**, and the grayscale version is **9605778**.

A 20% lighter version of the original color is **14924988**, and **7755093** is the 20% darker color. If you saturate the color by 10%, you get **11236982**, and if you desaturate by 10%, it is **11245720**.

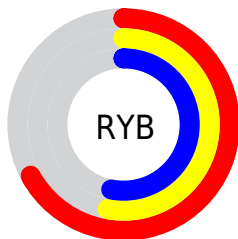
# Distribution



Red (67%)

Green (53%)

Blue (53%)



Red (67%)

Yellow (53%)

Blue (53%)

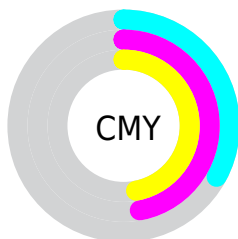


Cyan (0%)

Magenta (21%)

Yellow (21%)

Black (33%)



Cyan (33%)

Magenta (47%)

Yellow (47%)

# Brightness & Saturation Gradients

These gradients show how the Decimal color 11241351 changes by changing the brightness by 10 percent. The first figure shows a shift by +10% for each color and the second figure -10%.

Similar to the brightness gradients but the following saturation gradients show a change of the Decimal color 11241351 by changing the saturation by 10% instead.



 11241351

 11241351

16777215

 9465454

 14924988

 7755093

 16767192

 6110782

 16774644

 4532264

 2954004

 1638401

 0


 11241351

 11241351

 11236982

 11245720

 11232613

 11250089

 11228244

 11254458

 11223875

 11258827

 11219249

 11263196

 11214880

 11267822

 11210511

 11272191

 11206656

# Harmonies

## Analogous

The Analogous color harmony consists of three colors that are next to each other on the color wheel.



10979220



11241351



10979708

# Triad

The Triadic color harmony groups three colors that are evenly spaced from another and form a triangle on the color wheel.



11241351



8492415



8164009

# Complementary

The Complementary color scheme is a pair of colors which are on the opposite of each other on the color wheel.



11241351



8891307

# Split Complementary

Split-complementary colors differ from the complementary color scheme. The scheme consists of three colors, the original color and two neighbors of the complement color.



7378339



11241351



7640971

# Square

The Square scheme is like the rectangle color scheme, but the four colors are evenly spaced on the color wheel.



11241351



9474679



7247768



9277096

# Rectangle

The Rectangle color scheme consists of four colors that form a rectangle on the color wheel.



11241351



10587256



7247768



7902120



# Sweetspot

The Sweet Spot groups the original color and five complimentary colors.



11241351



14602705



11241387



7366760



15790320



7368816



# Same Dimension

The Same Dimension uses a secret algorithm to generate beautiful new colors.



11241351



14591654



11245959



5721678



9830400



1507328



# Inverse Universe

The Inverse Universe completely reimagines the original color for something new.



8891307



10936030



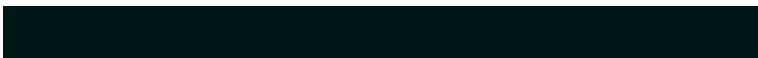
8886699



5134167



38550

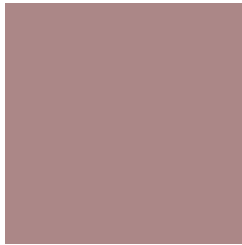


5911



# Previews

## White Background



This preview shows how the Decimal color 11241351 looks on a white background.

## Color Contrast Check

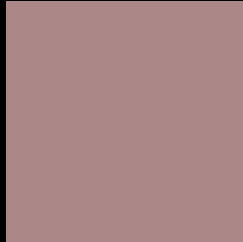
Large Text (above 18pt) WCAG AA ✓ Pass

Any Text WCAG AA × Fail

Large Text (above 18pt) WCAG AAA × Fail

Any Text WCAG AAA × Fail

# Black Background



This preview shows how the Decimal color 11241351 looks on a black background.

## Color Contrast Check

Large Text (above 18pt) WCAG AA ✓ Pass

Any Text WCAG AA ✓ Pass

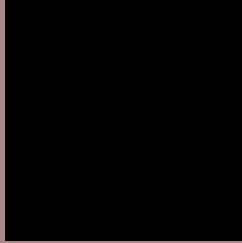
Large Text (above 18pt) WCAG AAA ✓ Pass

Any Text WCAG AAA × Fail

If you want to check with other color combinations, try the [Color Contrast Checker](#).



## Decimal 11241351 Background



This preview shows how black text looks on a background with the Decimal color 11241351.




This preview shows how white text looks on a background with the Decimal color 11241351.

# Color Blindness Simulation

Color vision deficiency is a very complex topic, and I could not describe the different causes any better than Wikipedia does, so if you want to learn more, you should check out their [article about color blindness](#).

## Dichromacy





**Tritanopia**  
11306640

# Trichromacy



**Original Color**  
11241351

**Protanomaly**  
10259594

**Deuteranomaly**  
10848902

**Tritanomaly**  
11306637

# Monochromacy



**Original Color**  
11241351

**Achromatopsia**  
9605778

**Achromatomaly**  
10194574

# CSS Examples

## Text

The CSS property to change the color of the text to Decimal 11241351 is called "color". The color property can be set on classes, ids or directly on the HTML element.

This example shows how text in the color #AB8787 looks like.

```
.text, #text, p{  
    color:#AB8787  
}
```

If you want to add a text shadow in that color use the text-shadow property, you can generate a text shadow directly with our [CSS Text Shadow Generator](#).

Here you see how black text with a 4 pixel #AB8787 colored shadow looks like.

```
.shadow{ text-shadow: 4px 4px 2px #AB8787
}
```

## Border

The CSS property to change the border of an element to Decimal 11241351 is called "border". The border property can be set on classes, ids or directly on the HTML element.

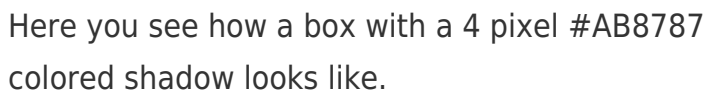
This example shows the color as border, it can be applied via the CSS property "border" or "border-color".

```
.border, #border, table{ border:4px solid
#AB8787 }
```

If only the border color should be changed use the property `border-color`.

```
.border{ border-color:#AB8787 }
```

If you want to add a box shadow in that color use:



Here you see how a box with a 4 pixel `#AB8787` colored shadow looks like.

```
.boxshadow{ -moz-box-shadow:4px 4px 4px  
4px #AB8787; -webkit-box-shadow:4px 4px  
4px 4px #AB8787; box-shadow:4px 4px 4px  
4px #AB8787 }
```

# Background

The CSS property to change the background color of an element to Decimal 11241351 is called "background". The background property can be set on classes, ids or directly on the HTML element.

```
.background, #background, body{  
background:#AB8787 }
```

If only the background color should be changed can be used:

```
.background{ background-color:#AB8787 }
```

This example shows the color as background, it is applied via the CSS property "background".

To optimize and compress your CSS code, you can use our [online CSS compressor and optimizer](#) based on csstidy. If you want to create a linear or radial gradient as background or border, check our [CSS Gradient Generator](#).



Hey! You found this booklet interesting? Support Converting Colors with the new Membership Option!

The pro membership hides all ads, plus gives you double the colors in the color bucket, and more awesome pro features!

**[Learn more, Memberships starting at \\$2.50/m!](#)**

**Follow me  
on Twitter!**

@ConvertingColor