

Converting Colors

Decimal(11241848)

Have a look what the booklet for
Decimal(11241848) contains.

Decimal(11241848)	3
<i>Conversions</i>	4
<i>Details</i>	6
<i>Harmonies</i>	11
<i>Previews</i>	23
<i>Color Blindness Simulation</i>	26
<i>CSS Examples</i>	29

Color

Decimal(11241848)

Conversions

Conversions Part 1

Format	Color
Hex	AB8978
RGB	171, 137, 120
RGB Percent	67%, 54%, 47%
CMY	0.3294, 0.4627, 0.5294
CMYK	0.00, 0.20, 0.30, 0.33
HSL	20°, 23%, 57%
HSV	20°, 30%, 67%
XYZ	29.1304, 27.9053, 21.6202
YIQ	145.2280, 25.7210, 1.9210

Conversions

Conversions Part 2

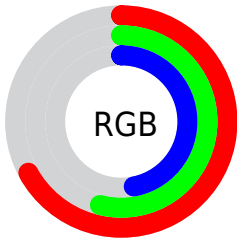
Format	Color
R_{YB}	171, 146, 120
Decimal	11241848
CIE _{Lab}	59.80, 10.37, 14.01
CIE _{LCh}	60, 17.436, 53.492
Yxy	27.9053, 0.3704, 0.3548
Android (android.graphics.Color)	4289431928 (0xFFAB8978)
YUV	145.2280, -12.4374, 22.6020
Hunter-Lab	52.8255, 5.9886, 12.7118

Details

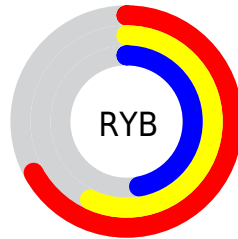
The Decimal color **11241848** is a dark color, and the websafe version is hex **CC9999**. A complement of this color would be **7903915**, and the grayscale version is **9539985**.

A 20% lighter version of the original color is **14925484**, and **7755591** is the 20% darker color. If you saturate the color by 10%, you get **11239015**, and if you desaturate by 10%, it is **11244681**.

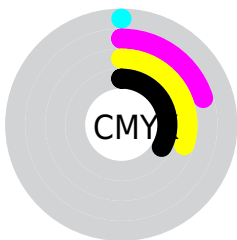
Distribution



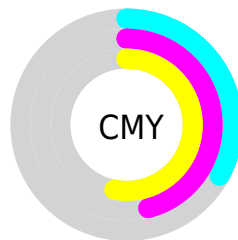
- Red (67%)
- Green (54%)
- Blue (47%)



- Red (67%)
- Yellow (57%)
- Blue (47%)



- Cyan (0%)
- Magenta (20%)
- Yellow (30%)
- Black (33%)



- Cyan (33%)
- Magenta (46%)
- Yellow (53%)

Brightness & Saturation Gradients

These gradients show how the Decimal color 11241848 changes by changing the brightness by 10 percent. The first figure shows a shift by +10% for each color and the second figure -10%.

Similar to the brightness gradients but the following saturation gradients show a change of the Decimal color 11241848 by changing the saturation by 10% instead.

 11241848

 11241848

16777215

 9465951

 14925484

 7755591

 16767688

 6045745

 16775140

 4467228

 2954498

 1376256

 0

 11241848

 11241848

 11239015

 11244681

■ 11235926

■ 11247770

■ 11233093

■ 11250603

■ 11230004

■ 11253692

■ 11227171

■ 11256525

■ 11224337

■ 11259359

■ 11221248

■ 11262448

■ 11265279

■ 11268351

Harmonies

Analogous

The Analogous color harmony consists of three colors that are next to each other on the color wheel.



11568773



11241848



10456690

Triad

The Triadic color harmony groups three colors that are evenly spaced from another and form a triangle on the color wheel.



11241848



7248268



9342380

Complementary

The Complementary color scheme is a pair of colors which are on the opposite of each other on the color wheel.



11241848



7903915

Split Complementary

Split-complementary colors differ from the complementary color scheme. The scheme consists of three colors, the original color and two neighbors of the complement color.



8032942



11241848



6723996

Square

The Square scheme is like the rectangle color scheme, but the four colors are evenly spaced on the color wheel.



11241848



8230781



7051176



10586274

Rectangle

The Rectangle color scheme consists of four colors that form a rectangle on the color wheel.



11241848



9802098



7051176



8949678

Sweetspot

The Sweet Spot groups the original color and five complimentary colors.



11241848



14602698



11237530



7366756



15790320



7368816

Same Dimension

The Same Dimension uses a secret algorithm to generate beautiful new colors.



11241848



14592398



11248248



5722446



9843200



1509376

Inverse Universe

The Inverse Universe completely reimagines the original color for something new.



7903915



9356254



7897259



5133399



25750



3863

Previews

White Background



This preview shows how the Decimal color 11241848 looks on a white background.

Color Contrast Check

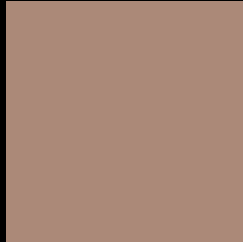
Large Text (above 18pt) WCAG AA ✓ Pass

Any Text WCAG AA × Fail

Large Text (above 18pt) WCAG AAA × Fail

Any Text WCAG AAA × Fail

Black Background



This preview shows how the Decimal color 11241848 looks on a black background.

Color Contrast Check

Large Text (above 18pt) WCAG AA ✓ Pass

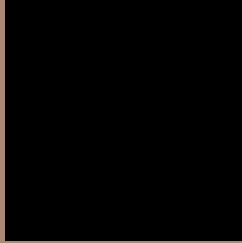
Any Text WCAG AA ✓ Pass

Large Text (above 18pt) WCAG AAA ✓ Pass

Any Text WCAG AAA × Fail

If you want to check with other color combinations, try the [Color Contrast Checker](#).

Decimal 11241848 Background



This preview shows how black text looks on a background with the Decimal color 11241848.



This preview shows how white text looks on a background with the Decimal color 11241848.

Color Blindness Simulation

Color vision deficiency is a very complex topic, and I could not describe the different causes any better than Wikipedia does, so if you want to learn more, you should check out their [article about color blindness](#).


Dichromacy



Original Color
11241848

Protanopia
9998459

Deuteranopia
10980216



Tritanopia
11437712

Trichromacy



Original Color
11241848

Protanomaly
10456442

Deuteranomaly
11045496

Tritanomaly
11372423

Monochromacy



Original Color
11241848

Achromatopsia
9539985

Achromatomaly
10129032

CSS Examples

Text

The CSS property to change the color of the text to Decimal 11241848 is called "color". The color property can be set on classes, ids or directly on the HTML element.

This example shows how text in the color #AB8978 looks like.

```
.text, #text, p{  
  color:#AB8978  
}
```

If you want to add a text shadow in that color use the text-shadow property, you can generate a text shadow directly with our [CSS Text Shadow Generator](#).

Here you see how black text with a 4 pixel #AB8978 colored shadow looks like.

```
.shadow{ text-shadow: 4px 4px 2px #AB8978
}
```

Border

The CSS property to change the border of an element to Decimal 11241848 is called "border". The border property can be set on classes, ids or directly on the HTML element.

This example shows the color as border, it can be applied via the CSS property "border" or "border-color".

```
.border, #border, table{ border:4px solid
#AB8978 }
```

If only the border color should be changed use the property `border-color`.

```
.border{ border-color:#AB8978 }
```

If you want to add a box shadow in that color use:

Here you see how a box with a 4 pixel #AB8978 colored shadow looks like.

```
.boxshadow{ -moz-box-shadow:4px 4px 4px  
4px #AB8978; -webkit-box-shadow:4px 4px  
4px 4px #AB8978; box-shadow:4px 4px 4px  
4px #AB8978 }
```

Background

The CSS property to change the background color of an element to Decimal 11241848 is called "background". The background property can be set on classes, ids or directly on the HTML element.

```
.background, #background, body{  
background:#AB8978 }
```

If only the background color should be changed can be used:

```
.background{ background-color:#AB8978 }
```

This example shows the color as background, it is applied via the CSS property "background".

To optimize and compress your CSS code, you can use our [online CSS compressor and optimizer](#) based on csstidy. If you want to create a linear or radial gradient as background or border, check our [CSS Gradient Generator](#).

Hey! You found this booklet interesting? Support Converting Colors with the new Membership Option!

The pro membership hides all ads, plus gives you double the colors in the color bucket, and more awesome pro features!

[Learn more, Memberships starting at \\$2.50/m!](#)

**Follow me
on Twitter!**

@ConvertingColor