

Converting Colors

Decimal(11242127)

Have a look what the booklet for
Decimal(11242127) contains.

Decimal(11242127)	3
<i>Conversions</i>	4
<i>Details</i>	6
<i>Harmonies</i>	11
<i>Previews</i>	23
<i>Color Blindness Simulation</i>	26
<i>CSS Examples</i>	29

Color

Decimal(11242127)

Conversions

Conversions Part 1

Format	Color
Hex	AB8A8F
RGB	171, 138, 143
RGB Percent	67%, 54%, 56%
CMY	0.3294, 0.4588, 0.4392
CMYK	0.00, 0.19, 0.16, 0.33
HSL	351°, 16%, 61%
HSV	351°, 19%, 67%
XYZ	30.8410, 28.8181, 29.9235
YIQ	148.4370, 18.0630, 8.5510

Conversions

Conversions Part 2

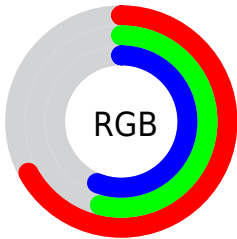
Format	Color
R_{YB}	171, 138, 143
Decimal	11242127
CIE Lab	60.62, 13.32, 2.07
CIE LCh	61, 13.483, 8.846
Yxy	28.8181, 0.3443, 0.3217
Android (android.graphics.Color)	4289432207 (0xFFAB8A8F)
YUV	148.4370, -2.6804, 19.7878
Hunter-Lab	53.6825, 8.6054, 4.5284

Details

The Decimal color **11242127** is a dark color, and the websafe version is hex **CC9999**. A complement of this color would be **9087910**, and the grayscale version is **9737364**.

A 20% lighter version of the original color is **14926021**, and **7755869** is the 20% darker color. If you saturate the color by 10%, you get **11237760**, and if you desaturate by 10%, it is **11246494**.

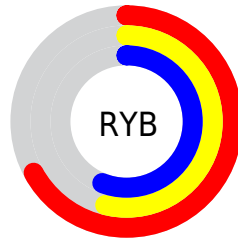
Distribution



Red (67%)

Green (54%)

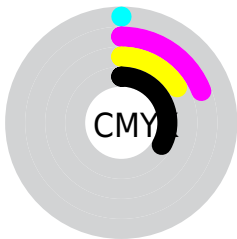
Blue (56%)



Red (67%)

Yellow (54%)

Blue (56%)

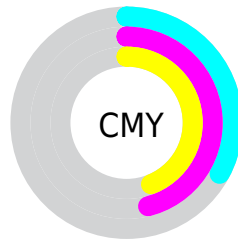


Cyan (0%)

Magenta (19%)

Yellow (16%)

Black (33%)



Cyan (33%)

Magenta (46%)

Yellow (44%)

Brightness & Saturation Gradients

These gradients show how the Decimal color 11242127 changes by changing the brightness by 10 percent. The first figure shows a shift by +10% for each color and the second figure -10%.

Similar to the brightness gradients but the following saturation gradients show a change of the Decimal color 11242127 by changing the saturation by 10% instead.



11242127



11242127

16777215



9465973



14926021



7755869



16767969



6111301



16775421



4532783



3020058



1835008



0



11242127



11242127



11237760



11246494

 11233394

 11250860

 11229027

 11255227


 11224661

 11259593

 11220294

 11263960

 11215672

 11268582

 11211305

 11272181

 11206939

 11272191

 11206682

Harmonies

Analogous

The Analogous color harmony consists of three colors that are next to each other on the color wheel.



10849179



11242127



11176836

Triad

The Triadic color harmony groups three colors that are evenly spaced from another and form a triangle on the color wheel.



11242127



9082495



8165032

Complementary

The Complementary color scheme is a pair of colors which are on the opposite of each other on the color wheel.



11242127



9087910

Split Complementary

Split-complementary colors differ from the complementary color scheme. The scheme consists of three colors, the original color and two neighbors of the complement color.



7641249



11242127



8296585

Square

The Square scheme is like the rectangle color scheme, but the four colors are evenly spaced on the color wheel.



11242127



9999227



7707029



9081513

Rectangle

The Rectangle color scheme consists of four colors that form a rectangle on the color wheel.



11242127



10915198



7707029



7903142

Sweetspot

The Sweet Spot groups the original color and five complimentary colors.



11242127



14602707



10848939



7366762



15790320



7368816

Same Dimension

The Same Dimension uses a secret algorithm to generate beautiful new colors.



11242127



14592947



11244938



5721679



9830423



1507331

Inverse Universe

The Inverse Universe completely reimagines the original color for something new.



11242127



14592947



9085099



5721679



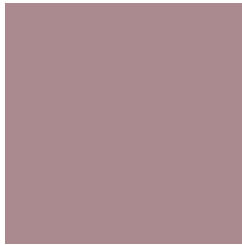
9830423



1507331

Previews

White Background



This preview shows how the Decimal color 11242127 looks on a white background.

Color Contrast Check

Large Text (above 18pt) WCAG AA ✓ Pass

Any Text WCAG AA × Fail

Large Text (above 18pt) WCAG AAA × Fail

Any Text WCAG AAA × Fail

Black Background



This preview shows how the Decimal color 11242127 looks on a black background.

Color Contrast Check

Large Text (above 18pt) WCAG AA ✓ Pass

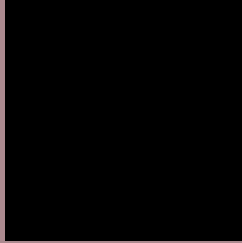
Any Text WCAG AA ✓ Pass

Large Text (above 18pt) WCAG AAA ✓ Pass

Any Text WCAG AAA × Fail

If you want to check with other color combinations, try the [Color Contrast Checker](#).

Decimal 11242127 Background



This preview shows how black text looks on a background with the Decimal color 11242127.




This preview shows how white text looks on a background with the Decimal color 11242127.

Color Blindness Simulation

Color vision deficiency is a very complex topic, and I could not describe the different causes any better than Wikipedia does, so if you want to learn more, you should check out their [article about color blindness](#).

Dichromacy





Tritanopia
11307412

Trichromacy



Original Color
11242127

Protanomaly
10325906

Deuteranomaly
10849678

Tritanomaly
11307410

Monochromacy



Original Color
11242127

Achromatopsia
9737364

Achromatomaly
10260626

CSS Examples

Text

The CSS property to change the color of the text to Decimal 11242127 is called "color". The color property can be set on classes, ids or directly on the HTML element.

This example shows how text in the color #AB8A8F looks like.

```
.text, #text, p{  
  color:#AB8A8F  
}
```

If you want to add a text shadow in that color use the text-shadow property, you can generate a text shadow directly with our [CSS Text Shadow Generator](#).

Here you see how black text with a 4 pixel #AB8A8F colored shadow looks like.

```
.shadow{ text-shadow: 4px 4px 2px #AB8A8F
}
```

Border

The CSS property to change the border of an element to Decimal 11242127 is called "border". The border property can be set on classes, ids or directly on the HTML element.

This example shows the color as border, it can be applied via the CSS property "border" or "border-color".

```
.border, #border, table{ border:4px solid
#AB8A8F }
```

If only the border color should be changed use the property `border-color`.

```
.border{ border-color:#AB8A8F }
```

If you want to add a box shadow in that color use:

Here you see how a box with a 4 pixel #AB8A8F colored shadow looks like.

```
.boxshadow{ -moz-box-shadow:4px 4px 4px  
4px #AB8A8F; -webkit-box-shadow:4px 4px  
4px 4px #AB8A8F; box-shadow:4px 4px 4px  
4px #AB8A8F }
```

Background

The CSS property to change the background color of an element to Decimal 11242127 is called "background". The background property can be set on classes, ids or directly on the HTML element.

```
.background, #background, body{  
background:#AB8A8F }
```

If only the background color should be changed can be used:

```
.background{ background-color:#AB8A8F }
```

This example shows the color as background, it is applied via the CSS property "background".

To optimize and compress your CSS code, you can use our [online CSS compressor and optimizer](#) based on csstidy. If you want to create a linear or radial gradient as background or border, check our [CSS Gradient Generator](#).

Hey! You found this booklet interesting? Support Converting Colors with the new Membership Option!

The pro membership hides all ads, plus gives you double the colors in the color bucket, and more awesome pro features!

[Learn more, Memberships starting at \\$2.50/m!](#)

**Follow me
on Twitter!**

@ConvertingColor