

Converting Colors

Decimal(11243665)

Have a look what the booklet for
Decimal(11243665) contains.

Decimal(11243665)	3
<i>Conversions</i>	4
<i>Details</i>	6
<i>Harmonies</i>	11
<i>Previews</i>	23
<i>Color Blindness Simulation</i>	26
<i>CSS Examples</i>	29

Color

Decimal(11243665)

Conversions

Conversions Part 1

Format	Color
Hex	AB9091
RGB	171, 144, 145
RGB Percent	67%, 56%, 57%
CMY	0.3294, 0.4353, 0.4314
CMYK	0.00, 0.16, 0.15, 0.33
HSL	358°, 14%, 62%
HSV	358°, 16%, 67%
XYZ	31.8787, 30.6488, 31.0237
YIQ	152.1870, 15.7710, 6.0350

Conversions

Conversions Part 2

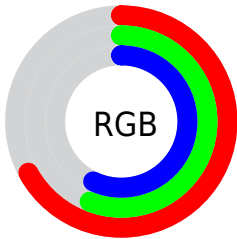
Format	Color
RYB	171, 144, 145
Decimal	11243665
CIELab	62.21, 10.28, 3.24
CIElCh	62, 10.781, 17.485
Yxy	30.6488, 0.3408, 0.3276
Android (android.graphics.Color)	4289433745 (0xFFAB9091)
YUV	152.1870, -3.5432, 16.4990
Hunter-Lab	55.3613, 5.9032, 5.5277

Details

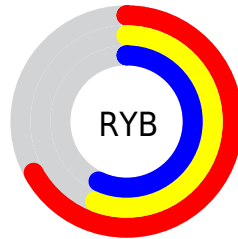
The Decimal color **11243665** is a light color, and the websafe version is hex **999999**. A complement of this color would be **9481130**, and the grayscale version is **10000536**.

A 20% lighter version of the original color is **14927559**, and **7757407** is the 20% darker color. If you saturate the color by 10%, you get **11239297**, and if you desaturate by 10%, it is **11248033**.

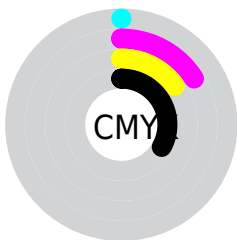
Distribution



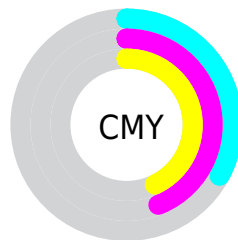
- Red (67%)
- Green (56%)
- Blue (57%)



- Red (67%)
- Yellow (56%)
- Blue (57%)



- Cyan (0%)
- Magenta (16%)
- Yellow (15%)
- Black (33%)



- Cyan (33%)
- Magenta (44%)
- Yellow (43%)

Brightness & Saturation Gradients

These gradients show how the Decimal color 11243665 changes by changing the brightness by 10 percent. The first figure shows a shift by +10% for each color and the second figure -10%.

Similar to the brightness gradients but the following saturation gradients show a change of the Decimal color 11243665 by changing the saturation by 10% instead.

 11243665

 11243665

16777215

 9467511

 14927559

 7757407

 16769763

 6112839

 4599601

 3086876

 1835009

 0

 11243665

 11243665

 11239297

 11248033

 11234928

 11252402

 11230560

 11256770

 11226191

 11261139

 11221823

 11265507

 11217198

 11270132

 11212830

 11272191

 11208461

 11206662

Harmonies

Analogous

The Analogous color harmony consists of three colors that are next to each other on the color wheel.



10981531



11243665



11113097

Triad

The Triadic color harmony groups three colors that are evenly spaced from another and form a triangle on the color wheel.



11243665



9280137



8951977

Complementary

The Complementary color scheme is a pair of colors which are on the opposite of each other on the color wheel.



11243665



9481130

Split Complementary

Split-complementary colors differ from the complementary color scheme. The scheme consists of three colors, the original color and two neighbors of the complement color.



8428452



11243665



8690834

Square

The Square scheme is like the rectangle color scheme, but the four colors are evenly spaced on the color wheel.



11243665



10000260



8297628



9672104

Rectangle

The Rectangle color scheme consists of four colors that form a rectangle on the color wheel.



11243665



10851205



8297628



8690088

Sweetspot

The Sweet Spot groups the original color and five complimentary colors.



11243665



14603219



11178155



7367018



15790320



7368816

Same Dimension

The Same Dimension uses a secret algorithm to generate beautiful new colors.



11243665



14595253



11246736



5721678



9830406



1507329

Inverse Universe

The Inverse Universe completely reimagines the original color for something new.



11243665



14595253



9478059



5721678



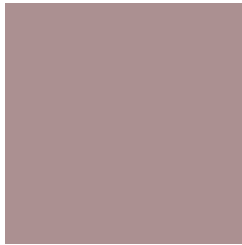
9830406



1507329

Previews

White Background



This preview shows how the Decimal color 11243665 looks on a white background.

Color Contrast Check

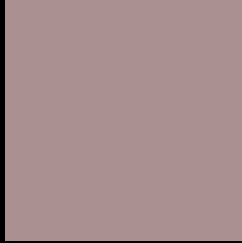
Large Text (above 18pt) WCAG AA × Fail

Any Text WCAG AA × Fail

Large Text (above 18pt) WCAG AAA × Fail

Any Text WCAG AAA × Fail

Black Background



This preview shows how the Decimal color 11243665 looks on a black background.

Color Contrast Check

Large Text (above 18pt) WCAG AA ✓ Pass

Any Text WCAG AA ✓ Pass

Large Text (above 18pt) WCAG AAA ✓ Pass

Any Text WCAG AAA ✓ Pass

If you want to check with other color combinations, try the [Color Contrast Checker](#).

Decimal 11243665 Background



This preview shows how black text looks on a background with the Decimal color 11243665.



This preview shows how white text looks on a background with the Decimal color 11243665.

Color Blindness Simulation

Color vision deficiency is a very complex topic, and I could not describe the different causes any better than Wikipedia does, so if you want to learn more, you should check out their [article about color blindness](#).

Dichromacy



Original Color


11243665

Protanopia

10131092

Deuteranopia

10981777



Tritanopia
11308954

Trichromacy



Original Color
11243665

Protanomaly
10523795

Deuteranomaly
11047313

Tritanomaly
11308951

Monochromacy



Original Color
11243665

Achromatopsia
10000536

Achromatomaly
10458517

CSS Examples

Text

The CSS property to change the color of the text to Decimal 11243665 is called "color". The color property can be set on classes, ids or directly on the HTML element.

This example shows how text in the color #AB9091 looks like.

```
.text, #text, p{  
    color:#AB9091  
}
```

If you want to add a text shadow in that color use the text-shadow property, you can generate a text shadow directly with our [CSS Text Shadow Generator](#).

Here you see how black text with a 4 pixel #AB9091 colored shadow looks like.

```
.shadow{ text-shadow: 4px 4px 2px #AB9091
}
```

Border

The CSS property to change the border of an element to Decimal 11243665 is called "border". The border property can be set on classes, ids or directly on the HTML element.

This example shows the color as border, it can be applied via the CSS property "border" or "border-color".

```
.border, #border, table{ border:4px solid
#AB9091 }
```

If only the border color should be changed use the property `border-color`.

```
.border{ border-color:#AB9091 }
```

If you want to add a box shadow in that color use:

Here you see how a box with a 4 pixel #AB9091 colored shadow looks like.

```
.boxshadow{ -moz-box-shadow:4px 4px 4px  
4px #AB9091; -webkit-box-shadow:4px 4px  
4px 4px #AB9091; box-shadow:4px 4px 4px  
4px #AB9091 }
```

Background

The CSS property to change the background color of an element to Decimal 11243665 is called "background". The background property can be set on classes, ids or directly on the HTML element.

```
.background, #background, body{  
background:#AB9091 }
```

If only the background color should be changed can be used:

```
.background{ background-color:#AB9091 }
```

This example shows the color as background, it is applied via the CSS property "background".

To optimize and compress your CSS code, you can use our [online CSS compressor and optimizer](#) based on csstidy. If you want to create a linear or radial gradient as background or border, check our [CSS Gradient Generator](#).

Hey! You found this booklet interesting? Support Converting Colors with the new Membership Option!

The pro membership hides all ads, plus gives you double the colors in the color bucket, and more awesome pro features!

[Learn more, Memberships starting at \\$2.50/m!](#)

**Follow me
on Twitter!**

@ConvertingColor