

# Converting Colors

Decimal(11301975)

Have a look what the booklet for  
Decimal(11301975) contains.

<b>Decimal(11301975)</b> .....	3
<b><i>Conversions</i></b> .....	4
<b><i>Details</i></b> .....	6
<b><i>Harmonies</i></b> .....	11
<b><i>Previews</i></b> .....	23
<b><i>Color Blindness Simulation</i></b> .....	26
<b><i>CSS Examples</i></b> .....	29

# Color

**Decimal(11301975)**

# Conversions

## Conversions Part 1

<b>Format</b>	<b>Color</b>
Hex	AC7457
RGB	172, 116, 87
RGB Percent	67%, 45%, 34%
CMY	0.3255, 0.5451, 0.6588
CMYK	0.00, 0.33, 0.49, 0.33
HSL	20°, 34%, 51%
HSV	20°, 49%, 67%
XYZ	24.9789, 21.9496, 11.9370
YIQ	129.4380, 42.6850, 2.8530

# Conversions

## Conversions Part 2

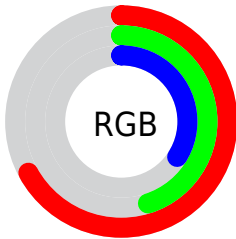
<b>Format</b>	<b>Color</b>
<b>R<sub>YB</sub></b>	172, 131, 87
Decimal	11301975
CIE Lab	53.97, 18.66, 24.92
CIE LCh	54, 31.134, 53.178
Yxy	21.9496, 0.4243, 0.3729
Android (android.graphics.Color)	4289492055 (0xFFAC7457)
YUV	129.4380, -20.9219, 37.3269
Hunter-Lab	46.8504, 13.1817, 17.6888

# Details

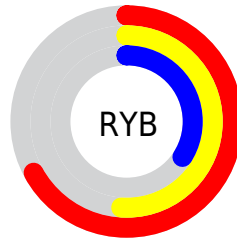
The Decimal color **11301975** is a dark color, and the websafe version is hex **996633**. A complement of this color would be **5738412**, and the grayscale version is **8553090**.

A 20% lighter version of the original color is **15116425**, and **7684905** is the 20% darker color. If you saturate the color by 10%, you get **11299142**, and if you desaturate by 10%, it is **11304808**.

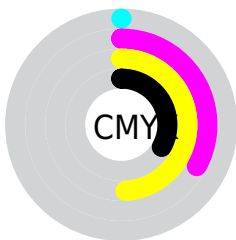
# Distribution



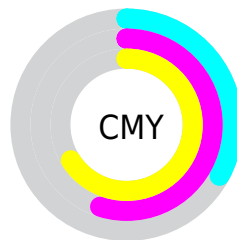
- Red (67%)
- Green (45%)
- Blue (34%)



- Red (67%)
- Yellow (51%)
- Blue (34%)



- Cyan (0%)
- Magenta (33%)
- Yellow (49%)
- Black (33%)



- Cyan (33%)
- Magenta (55%)
- Yellow (66%)


# Brightness & Saturation Gradients

These gradients show how the Decimal color 11301975 changes by changing the brightness by 10 percent. The first figure shows a shift by +10% for each color and the second figure -10%.

Similar to the brightness gradients but the following saturation gradients show a change of the Decimal color 11301975 by changing the saturation by 10% instead.



 11301975	 11301975
 16777215	 9460543
 15116425	 7684905
 16762020	 5909780
 16769215	 4265728
 16776411	 2621440
 16777207	 0

 11301975	 11301975
 11299142	 11304808
 11296053	 11307897

■ 11293219

■ 11310731

■ 11290386

■ 11313564

■ 11287297

■ 11316653

■ 11287296

■ 11319486

■ 11322319

■ 11325409

■ 11328242

# Harmonies

## Analogous

The Analogous color harmony consists of three colors that are next to each other on the color wheel.



11890029



11301975



9993547

# Triad

The Triadic color harmony groups three colors that are evenly spaced from another and form a triangle on the color wheel.



11301975



3837818



8092850

# Complementary

The Complementary color scheme is a pair of colors which are on the opposite of each other on the color wheel.



11301975



5738412

# Split Complementary

Split-complementary colors differ from the complementary color scheme. The scheme consists of three colors, the original color and two neighbors of the complement color.



5211830



11301975



1019797

# Square

The Square scheme is like the rectangle color scheme, but the four colors are evenly spaced on the color wheel.



11301975



6196320



1871019



10318754

# Rectangle

The Rectangle color scheme consists of four colors that form a rectangle on the color wheel.



11301975



8880972



1871019



7176373



# Sweetspot

The Sweet Spot groups the original color and five complimentary colors.



11301975



14731967



11294608



7365468



15790320



7368816



# Same Dimension

The Same Dimension uses a secret algorithm to generate beautiful new colors.



11301975



14715228



11312727



5722446



9843456



1509376



# Inverse Universe

The Inverse Universe completely reimagines the original color for something new.



5738412



6075360



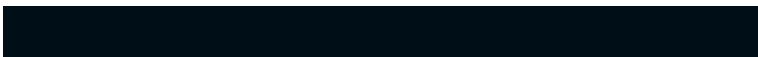
5727660



5133399



25494

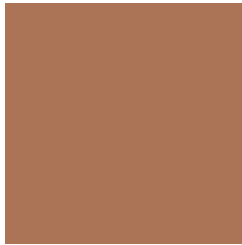


3863



# Previews

## White Background



This preview shows how the Decimal color 11301975 looks on a white background.

## Color Contrast Check

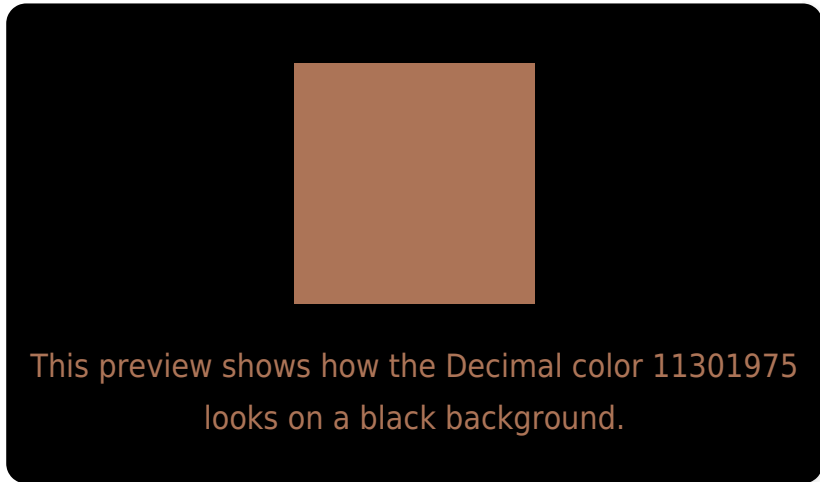
Large Text (above 18pt) WCAG AA ✓ Pass

Any Text WCAG AA ✗ Fail

Large Text (above 18pt) WCAG AAA ✗ Fail

Any Text WCAG AAA ✗ Fail

# Black Background



## Color Contrast Check

Large Text (above 18pt) WCAG AA ✓ Pass

Any Text WCAG AA ✓ Pass

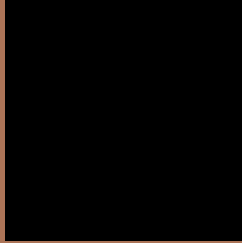
Large Text (above 18pt) WCAG AAA ✓ Pass

Any Text WCAG AAA × Fail

If you want to check with other color combinations, try the [Color Contrast Checker](#).



## Decimal 11301975 Background



This preview shows how black text looks on a background with the Decimal color 11301975.



This preview shows how white text looks on a background with the Decimal color 11301975.

# Color Blindness Simulation

Color vision deficiency is a very complex topic, and I could not describe the different causes any better than Wikipedia does, so if you want to learn more, you should check out their [article about color blindness](#).

## Dichromacy



**Original Color**  
11301975

**Protanopia**  
9142621

**Deuteranopia**  
10189909



**Tritanopia**  
11497592

# Trichromacy



**Original Color**  
11301975

**Protanomaly**  
9927771

**Deuteranomaly**  
10582358

**Tritanomaly**  
11432300

# Monochromacy



**Original Color**  
11301975

**Achromatopsia**  
8487297

**Achromatomaly**  
9534578

# CSS Examples

## Text

The CSS property to change the color of the text to Decimal 11301975 is called "color". The color property can be set on classes, ids or directly on the HTML element.

This example shows how text in the color #AC7457 looks like.

```
.text, #text, p{  
  color:#AC7457  
}
```

If you want to add a text shadow in that color use the text-shadow property, you can generate a text shadow directly with our [CSS Text Shadow Generator](#).

Here you see how black text with a 4 pixel #AC7457 colored shadow looks like.

```
.shadow{ text-shadow: 4px 4px 2px #AC7457  
}
```

## Border

The CSS property to change the border of an element to Decimal 11301975 is called "border". The border property can be set on classes, ids or directly on the HTML element.

This example shows the color as border, it can be applied via the CSS property "border" or "border-color".

```
.border, #border, table{ border:4px solid  
#AC7457 }
```

If only the border color should be changed use the property border-color.

```
.border{ border-color:#AC7457 }
```

If you want to add a box shadow in that color use:

Here you see how a box with a 4 pixel #AC7457 colored shadow looks like.

```
.boxshadow{ -moz-box-shadow:4px 4px 4px  
4px #AC7457; -webkit-box-shadow:4px 4px  
4px 4px #AC7457; box-shadow:4px 4px 4px  
4px #AC7457 }
```

# Background

The CSS property to change the background color of an element to Decimal 11301975 is called "background". The background property can be set on classes, ids or directly on the HTML element.

```
.background, #background, body{  
background:#AC7457 }
```

If only the background color should be changed can be used:

```
.background{ background-color:#AC7457 }
```

This example shows the color as background, it is applied via the CSS property "background".

To optimize and compress your CSS code, you can use our [online CSS compressor and optimizer](#) based on csstidy. If you want to create a linear or radial gradient as background or border, check our [CSS Gradient Generator](#).



Hey! You found this booklet interesting? Support Converting Colors with the new Membership Option!

The pro membership hides all ads, plus gives you double the colors in the color bucket, and more awesome pro features!

**[Learn more, Memberships starting at \\$2.50/m!](#)**

**Follow me  
on Twitter!**

@ConvertingColor