

Converting Colors

Decimal(11304056)

Have a look what the booklet for
Decimal(11304056) contains.

| | |
|--|----|
| Decimal(11304056) | 3 |
| <i>Conversions</i> | 4 |
| <i>Details</i> | 6 |
| <i>Harmonies</i> | 11 |
| <i>Previews</i> | 23 |
| <i>Color Blindness Simulation</i> | 26 |
| <i>CSS Examples</i> | 29 |

Color

Decimal(11304056)

Conversions

Conversions Part 1

| Format | Color |
|---------------|---------------------------|
| Hex | AC7C78 |
| RGB | 172, 124, 120 |
| RGB Percent | 67%, 49%, 47% |
| CMY | 0.3255, 0.5137, 0.5294 |
| CMYK | 0.00, 0.28, 0.30, 0.33 |
| HSL | 5°, 24%, 57% |
| HSV | 5°, 30%, 67% |
| XYZ | 27.6111, 24.5420, 21.0511 |
| YIQ | 137.8960, 29.8920, 8.9320 |

Conversions

Conversions Part 2

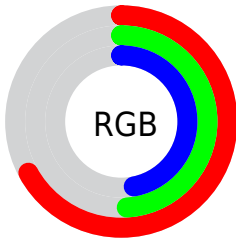
| Format | Color |
|-------------------------------------|-------------------------------|
| R_{YB} | 172, 124, 120 |
| Decimal | 11304056 |
| CIE Lab | 56.63, 18.10, 9.57 |
| CIE LCh | 57, 20.475, 27.869 |
| Yxy | 24.5420, 0.3772, 0.3353 |
| Android (android.graphics.Color) | 4289494136 (0xFFAC7C78) |
| YUV | 137.8960, -8.8227, 29.9092 |
| Hunter-Lab | 49.5399, 12.7922, 9.4837 |

Details

The Decimal color **11304056** is a dark color, and the websafe version is hex **996666**. A complement of this color would be **7907500**, and the grayscale version is **9079434**.

A 20% lighter version of the original color is **14987692**, and **7752520** is the 20% darker color. If you saturate the color by 10%, you get **11299943**, and if you desaturate by 10%, it is **11308169**.

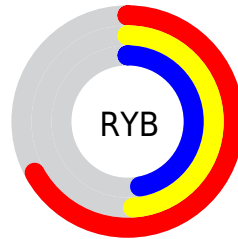
Distribution



Red (67%)

Green (49%)

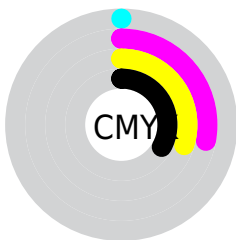
Blue (47%)



Red (67%)

Yellow (49%)

Blue (47%)

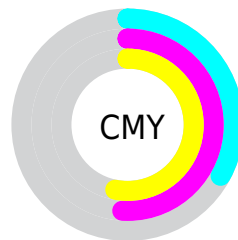


Cyan (0%)

Magenta (28%)

Yellow (30%)

Black (33%)



Cyan (33%)

Magenta (51%)

Yellow (53%)

Brightness & Saturation Gradients

These gradients show how the Decimal color 11304056 changes by changing the brightness by 10 percent. The first figure shows a shift by +10% for each color and the second figure -10%.

Similar to the brightness gradients but the following saturation gradients show a change of the Decimal color 11304056 by changing the saturation by 10% instead.

 11304056

 11304056

16777215

 9528159


 14987692

 7752520

 16764104

 6108209

 16771556

 4464156

 2951170

 589824

 0


 11304056

 11304056

 11299943

 11308169

 11295830

 11312282

 11291716

 11316396

 11287603

 11320509

 11283746

 11324366

 11279633

 11328479

 11275520

 11332592

 11336703

 11337727

Harmonies

Analogous

The Analogous color harmony consists of three colors that are next to each other on the color wheel.



11172746



11304056



10846314

Triad

The Triadic color harmony groups three colors that are evenly spaced from another and form a triangle on the color wheel.



11304056



7311476



7375531

Complementary

The Complementary color scheme is a pair of colors which are on the opposite of each other on the color wheel.



11304056



7907500

Split Complementary

Split-complementary colors differ from the complementary color scheme. The scheme consists of three colors, the original color and two neighbors of the complement color.



6066085



11304056



6132358

Square

The Square scheme is like the rectangle color scheme, but the four colors are evenly spaced on the color wheel.



11304056



8621160



5542296



9012391

Rectangle

The Rectangle color scheme consists of four colors that form a rectangle on the color wheel.



11304056



10257509



5542296



6917290

Sweetspot

The Sweet Spot groups the original color and five complimentary colors.



11304056



14733004



11303081



7365988



15790320



7368816

Same Dimension

The Same Dimension uses a secret algorithm to generate beautiful new colors.



11304056



14718608



11310456



5721934



9833472



1507840

Inverse Universe

The Inverse Universe completely reimagines the original color for something new.



7907500



9493216



7901100



5133911



35734



5399

Previews

White Background



This preview shows how the Decimal color 11304056 looks on a white background.

Color Contrast Check

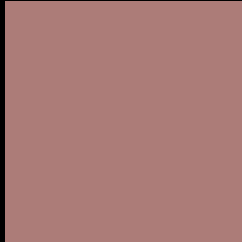
Large Text (above 18pt) WCAG AA ✓ Pass

Any Text WCAG AA × Fail

Large Text (above 18pt) WCAG AAA × Fail

Any Text WCAG AAA × Fail

Black Background



This preview shows how the Decimal color 11304056 looks on a black background.

Color Contrast Check

Large Text (above 18pt) WCAG AA ✓ Pass

Any Text WCAG AA ✓ Pass

Large Text (above 18pt) WCAG AAA ✓ Pass

Any Text WCAG AAA × Fail

If you want to check with other color combinations, try the [Color Contrast Checker](#).

Decimal 11304056 Background



This preview shows how black text looks on a background with the Decimal color 11304056.



This preview shows how white text looks on a background with the Decimal color 11304056.

Color Blindness Simulation

Color vision deficiency is a very complex topic, and I could not describe the different causes any better than Wikipedia does, so if you want to learn more, you should check out their [article about color blindness](#).


Dichromacy



Original Color
11304056

Protanopia
9275518

Deuteranopia
10257271



Tritanopia
11369092

Trichromacy



Original Color
11304056

Protanomaly
9995388

Deuteranomaly
10649719

Tritanomaly
11369344

Monochromacy



Original Color
11304056

Achromatopsia
9079434

Achromatomaly
9864579

CSS Examples

Text

The CSS property to change the color of the text to Decimal 11304056 is called "color". The color property can be set on classes, ids or directly on the HTML element.

This example shows how text in the color #AC7C78 looks like.

```
.text, #text, p{  
  color:#AC7C78  
}
```

If you want to add a text shadow in that color use the text-shadow property, you can generate a text shadow directly with our [CSS Text Shadow Generator](#).

Here you see how black text with a 4 pixel #AC7C78 colored shadow looks like.

```
.shadow{ text-shadow: 4px 4px 2px #AC7C78  
}
```

Border

The CSS property to change the border of an element to Decimal 11304056 is called "border". The border property can be set on classes, ids or directly on the HTML element.

This example shows the color as border, it can be applied via the CSS property "border" or "border-color".

```
.border, #border, table{ border:4px solid  
#AC7C78 }
```

If only the border color should be changed use the property `border-color`.

```
.border{ border-color:#AC7C78 }
```

If you want to add a box shadow in that color use:

Here you see how a box with a 4 pixel #AC7C78 colored shadow looks like.

```
.boxshadow{ -moz-box-shadow:4px 4px 4px  
4px #AC7C78; -webkit-box-shadow:4px 4px  
4px 4px #AC7C78; box-shadow:4px 4px 4px  
4px #AC7C78 }
```

Background

The CSS property to change the background color of an element to Decimal 11304056 is called "background". The background property can be set on classes, ids or directly on the HTML element.

```
.background, #background, body{  
background:#AC7C78 }
```

If only the background color should be changed can be used:

```
.background{ background-color:#AC7C78 }
```

This example shows the color as background, it is applied via the CSS property "background".

To optimize and compress your CSS code, you can use our [online CSS compressor and optimizer](#) based on csstidy. If you want to create a linear or radial gradient as background or border, check our [CSS Gradient Generator](#).

Hey! You found this booklet interesting? Support Converting Colors with the new Membership Option!

The pro membership hides all ads, plus gives you double the colors in the color bucket, and more awesome pro features!

[Learn more, Memberships starting at \\$2.50/m!](#)

**Follow me
on Twitter!**

@ConvertingColor