

Converting Colors

Decimal(11304781)

Have a look what the booklet for
Decimal(11304781) contains.

Decimal(11304781)	3
<i>Conversions</i>	4
<i>Details</i>	6
<i>Harmonies</i>	11
<i>Previews</i>	23
<i>Color Blindness Simulation</i>	26
<i>CSS Examples</i>	29

Color

Decimal(11304781)

Conversions

Conversions Part 1

Format	Color
Hex	AC7F4D
RGB	172, 127, 77
RGB Percent	67%, 50%, 30%
CMY	0.3255, 0.5020, 0.6980
CMYK	0.00, 0.26, 0.55, 0.33
HSL	32°, 38%, 49%
HSV	32°, 55%, 67%
XYZ	25.9422, 24.4852, 10.3800
YIQ	134.7550, 42.8700, -6.0100

Conversions

Conversions Part 2

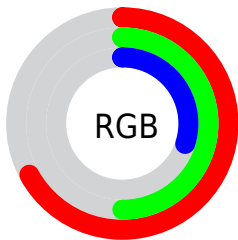
Format	Color
R_{YB}	163, 172, 77
Decimal	11304781
CIE Lab	56.57, 11.53, 33.76
CIE LCh	57, 35.672, 71.141
Yxy	24.4852, 0.4266, 0.4027
Android (android.graphics.Color)	4289494861 (0xFFAC7F4D)
YUV	134.7550, -28.4732, 32.6639
Hunter-Lab	49.4825, 6.9876, 22.2005

Details

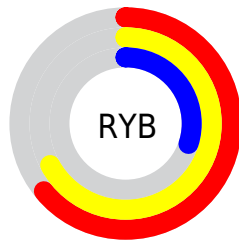
The Decimal color **11304781** is a dark color, and the websafe version is hex **996633**. A complement of this color would be **5077676**, and the grayscale version is **8882055**.

A 20% lighter version of the original color is **15119487**, and **7687710** is the 20% darker color. If you saturate the color by 10%, you get **11302716**, and if you desaturate by 10%, it is **11306846**.

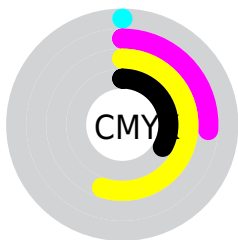
Distribution



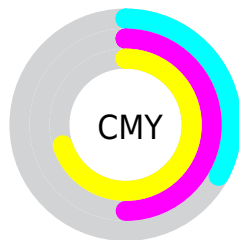
- Red (67%)
- Green (50%)
- Blue (30%)



- Red (64%)
- Yellow (67%)
- Blue (30%)



- Cyan (0%)
- Magenta (26%)
- Yellow (55%)
- Black (33%)



- Cyan (33%)
- Magenta (50%)
- Yellow (70%)

Brightness & Saturation Gradients

These gradients show how the Decimal color 11304781 changes by changing the brightness by 10 percent. The first figure shows a shift by +10% for each color and the second figure -10%.

Similar to the brightness gradients but the following saturation gradients show a change of the Decimal color 11304781 by changing the saturation by 10% instead.

 11304781  11304781

16777215  9463349

 15119487  7687710

 16764825  5912326

 16772020  4268544

 16777168  2559232

 16777197  0

 11304781  11304781

 11302716  11306846

 11300651  11308911

■ 11298585

■ 11310977

■ 11296264

■ 11313298

■ 11295488

■ 11315363

■ 11317428

■ 11319493

■ 11321559

■ 11323624

Harmonies

Analogous

The Analogous color harmony consists of three colors that are next to each other on the color wheel.



12547424



11304781



9472585

Triad

The Triadic color harmony groups three colors that are evenly spaced from another and form a triangle on the color wheel.



11304781



39059



10124215

Complementary

The Complementary color scheme is a pair of colors which are on the opposite of each other on the color wheel.



11304781



5077676

Split Complementary

Split-complementary colors differ from the complementary color scheme. The scheme consists of three colors, the original color and two neighbors of the complement color.



7112644



11304781



38576

Square

The Square scheme is like the rectangle color scheme, but the four colors are evenly spaced on the color wheel.



11304781



4560755



2920642



12022428

Rectangle

The Rectangle color scheme consists of four colors that form a rectangle on the color wheel.



11304781



8032081



2920642



9207741

Sweetspot

The Sweet Spot groups the original color and five complimentary colors.



11304781



14732986



11292027



7366234



15790320



7368816

Same Dimension

The Same Dimension uses a secret algorithm to generate beautiful new colors.



11304781



14719564



11185229



5722958



9850624



1510400

Inverse Universe

The Inverse Universe completely reimagines the original color for something new.



5077676



5018336



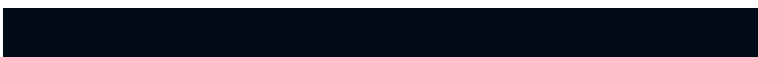
5197228



5132887



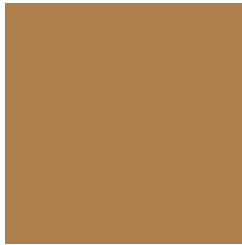
18326



2839

Previews

White Background



This preview shows how the Decimal color 11304781 looks on a white background.

Color Contrast Check

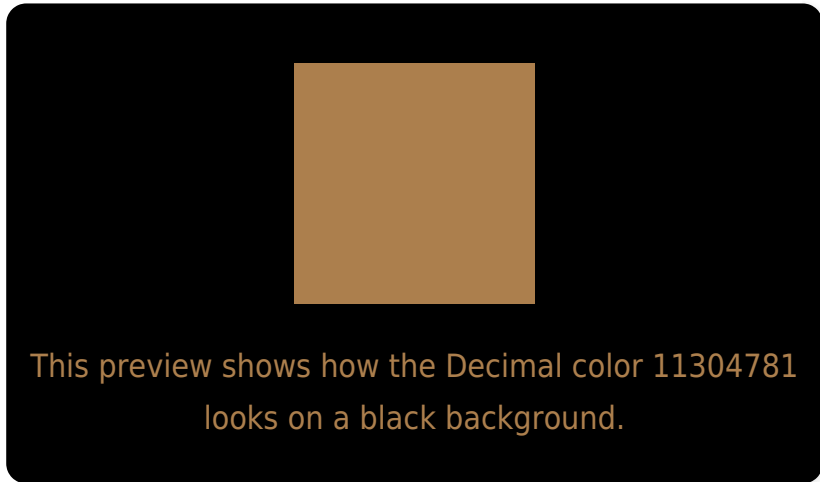
Large Text (above 18pt) WCAG AA ✓ Pass

Any Text WCAG AA × Fail

Large Text (above 18pt) WCAG AAA × Fail

Any Text WCAG AAA × Fail

Black Background



Color Contrast Check

Large Text (above 18pt) WCAG AA ✓ Pass

Any Text WCAG AA ✓ Pass

Large Text (above 18pt) WCAG AAA ✓ Pass

Any Text WCAG AAA × Fail

If you want to check with other color combinations, try the [Color Contrast Checker](#).

Decimal 11304781 Background



This preview shows how black text looks on a background with the Decimal color 11304781.



This preview shows how white text looks on a background with the Decimal color 11304781.

Color Blindness Simulation

Color vision deficiency is a very complex topic, and I could not describe the different causes any better than Wikipedia does, so if you want to learn more, you should check out their [article about color blindness](#).


Dichromacy



Original Color
11304781

Protanopia
9799760

Deuteranopia
10912332



Tritanopia
11565442

Trichromacy



Original Color
11304781

Protanomaly
10323279

Deuteranomaly
11043148

Tritanomaly
11500399

Monochromacy



Original Color
11304781

Achromatopsia
8882055

Achromatomaly
9733234

CSS Examples

Text

The CSS property to change the color of the text to Decimal 11304781 is called "color". The color property can be set on classes, ids or directly on the HTML element.

This example shows how text in the color #AC7F4D looks like.

```
.text, #text, p{  
    color:#AC7F4D  
}
```

If you want to add a text shadow in that color use the text-shadow property, you can generate a text shadow directly with our [CSS Text Shadow Generator](#).

Here you see how black text with a 4 pixel #AC7F4D colored shadow looks like.

```
.shadow{ text-shadow: 4px 4px 2px #AC7F4D
}
```

Border

The CSS property to change the border of an element to Decimal 11304781 is called "border". The border property can be set on classes, ids or directly on the HTML element.

This example shows the color as border, it can be applied via the CSS property "border" or "border-color".

```
.border, #border, table{ border:4px solid
#AC7F4D }
```

If only the border color should be changed use the property `border-color`.

```
.border{ border-color:#AC7F4D }
```

If you want to add a box shadow in that color use:

Here you see how a box with a 4 pixel #AC7F4D colored shadow looks like.

```
.boxshadow{ -moz-box-shadow:4px 4px 4px  
4px #AC7F4D; -webkit-box-shadow:4px 4px  
4px 4px #AC7F4D; box-shadow:4px 4px 4px  
4px #AC7F4D }
```

Background

The CSS property to change the background color of an element to Decimal 11304781 is called "background". The background property can be set on classes, ids or directly on the HTML element.

```
.background, #background, body{  
background:#AC7F4D }
```

If only the background color should be changed can be used:

```
.background{ background-color:#AC7F4D }
```

This example shows the color as background, it is applied via the CSS property "background".

To optimize and compress your CSS code, you can use our [online CSS compressor and optimizer](#) based on csstidy. If you want to create a linear or radial gradient as background or border, check our [CSS Gradient Generator](#).

Hey! You found this booklet interesting? Support Converting Colors with the new Membership Option!

The pro membership hides all ads, plus gives you double the colors in the color bucket, and more awesome pro features!

[Learn more, Memberships starting at \\$2.50/m!](#)

**Follow me
on Twitter!**

@ConvertingColor