

Converting Colors

Decimal(11305313)

Have a look what the booklet for
Decimal(11305313) contains.

| | |
|--|----|
| Decimal(11305313) | 3 |
| <i>Conversions</i> | 4 |
| <i>Details</i> | 6 |
| <i>Harmonies</i> | 11 |
| <i>Previews</i> | 23 |
| <i>Color Blindness Simulation</i> | 26 |
| <i>CSS Examples</i> | 29 |

Color

Decimal(11305313)

Conversions

Conversions Part 1

| Format | Color |
|---------------|----------------------------|
| Hex | AC8161 |
| RGB | 172, 129, 97 |
| RGB Percent | 67%, 51%, 38% |
| CMY | 0.3255, 0.4941, 0.6196 |
| CMYK | 0.00, 0.25, 0.44, 0.33 |
| HSL | 26°, 31%, 53% |
| HSV | 26°, 44%, 67% |
| XYZ | 27.0212, 25.3342, 14.7751 |
| YIQ | 138.2090, 35.9000, -0.8360 |

Conversions

Conversions Part 2

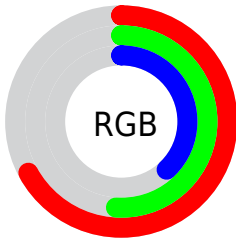
| Format | Color |
|-------------------------------------|---|
| RYB | 172, 153, 97 |
| Decimal | 11305313 |
| CIELab | 57.40, 12.39, 23.78 |
| CIELCh | 57, 26.812, 62.472 |
| Yxy | 25.3342, 0.4025, 0.3774 |
| Android (android.graphics.Color) | 4289495393 (0xFFAC8161) |
| YUV | 138.2090, -20.3160, 29.6347 |
| Hunter-Lab | 50.3331, 7.7442, 17.8288 |

Details

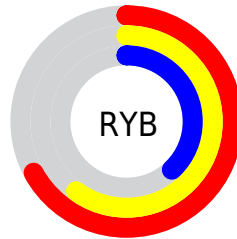
The Decimal color **11305313** is a dark color, and the websafe version is hex **CC9966**. A complement of this color would be **6393004**, and the grayscale version is **9079434**.

A 20% lighter version of the original color is **15054484**, and **7753778** is the 20% darker color. If you saturate the color by 10%, you get **11302736**, and if you desaturate by 10%, it is **11307890**.

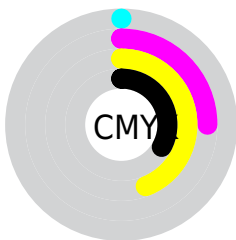
Distribution



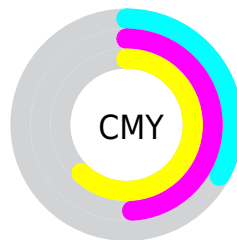
- Red (67%)
- Green (51%)
- Blue (38%)



- Red (67%)
- Yellow (60%)
- Blue (38%)



- Cyan (0%)
- Magenta (25%)
- Yellow (44%)
- Black (33%)



- Cyan (33%)
- Magenta (49%)
- Yellow (62%)

Brightness & Saturation Gradients

These gradients show how the Decimal color 11305313 changes by changing the brightness by 10 percent. The first figure shows a shift by +10% for each color and the second figure -10%.

Similar to the brightness gradients but the following saturation gradients show a change of the Decimal color 11305313 by changing the saturation by 10% instead.

 11305313

 11305313

16777215

 9463881

 15054484

 7753778

 16765615

 6043932

 16772810

 4399876

 16777190

 2756352

 196608

 0

 11305313

 11305313

 11302736

 11307890

■ 11300159

■ 11310467

■ 11297581

■ 11313045

■ 11295260

■ 11315366

■ 11292683

■ 11317943

■ 11290880

■ 11320520

■ 11323097

■ 11325675

■ 11328252

Harmonies

Analogous

The Analogous color harmony consists of three colors that are next to each other on the color wheel.



12024434



11305313



9996635

Triad

The Triadic color harmony groups three colors that are evenly spaced from another and form a triangle on the color wheel.



11305313



4888459



9470897

Complementary

The Complementary color scheme is a pair of colors which are on the opposite of each other on the color wheel.



11305313



6393004

Split Complementary

Split-complementary colors differ from the complementary color scheme. The scheme consists of three colors, the original color and two neighbors of the complement color.



7244728



11305313



3970722

Square

The Square scheme is like the rectangle color scheme, but the four colors are evenly spaced on the color wheel.



11305313



6591859



5018291



11107488

Rectangle

The Rectangle color scheme consists of four colors that form a rectangle on the color wheel.



11305313



8949342



5018291



8750773

Sweetspot

The Sweet Spot groups the original color and five complimentary colors.



11305313



14733507



11297165



7366238



15790320



7368816

Same Dimension

The Same Dimension uses a secret algorithm to generate beautiful new colors.



11305313



14720364



11314785



5722702



9846784



1509888

Inverse Universe

The Inverse Universe completely reimagines the original color for something new.



6393004



7122912



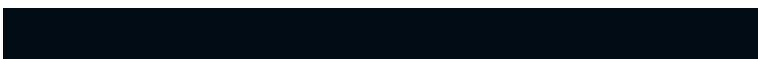
6383532



5133143



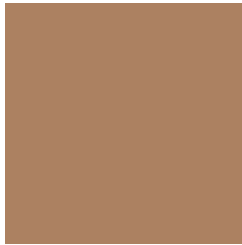
22166



3351

Previews

White Background



This preview shows how the Decimal color 11305313 looks on a white background.

Color Contrast Check

Large Text (above 18pt) WCAG AA ✓ Pass

Any Text WCAG AA × Fail

Large Text (above 18pt) WCAG AAA × Fail

Any Text WCAG AAA × Fail

Black Background



This preview shows how the Decimal color 11305313 looks on a black background.

Color Contrast Check

Large Text (above 18pt) WCAG AA ✓ Pass

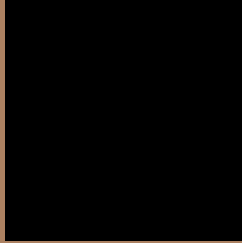
Any Text WCAG AA ✓ Pass

Large Text (above 18pt) WCAG AAA ✓ Pass

Any Text WCAG AAA × Fail

If you want to check with other color combinations, try the [Color Contrast Checker](#).

Decimal 11305313 Background



This preview shows how black text looks on a background with the Decimal color 11305313.



This preview shows how white text looks on a background with the Decimal color 11305313.

Color Blindness Simulation

Color vision deficiency is a very complex topic, and I could not describe the different causes any better than Wikipedia does, so if you want to learn more, you should check out their [article about color blindness](#).


Dichromacy



Original Color
11305313

Protanopia
9734757

Deuteranopia
10847328



Tritanopia
11500678

Trichromacy



Original Color
11305313

Protanomaly
10323812

Deuteranomaly
11043680

Tritanomaly
11435641

Monochromacy



Original Color
11305313

Achromatopsia
9079434

Achromatomaly
9865083

CSS Examples

Text

The CSS property to change the color of the text to Decimal 11305313 is called "color". The color property can be set on classes, ids or directly on the HTML element.

This example shows how text in the color #AC8161 looks like.

```
.text, #text, p{  
    color:#AC8161  
}
```

If you want to add a text shadow in that color use the text-shadow property, you can generate a text shadow directly with our [CSS Text Shadow Generator](#).

Here you see how black text with a 4 pixel #AC8161 colored shadow looks like.

```
.shadow{ text-shadow: 4px 4px 2px #AC8161
}
```

Border

The CSS property to change the border of an element to Decimal 11305313 is called "border". The border property can be set on classes, ids or directly on the HTML element.

This example shows the color as border, it can be applied via the CSS property "border" or "border-color".

```
.border, #border, table{ border:4px solid
#AC8161 }
```

If only the border color should be changed use the property `border-color`.

```
.border{ border-color:#AC8161 }
```

If you want to add a box shadow in that color use:

Here you see how a box with a 4 pixel #AC8161 colored shadow looks like.

```
.boxshadow{ -moz-box-shadow:4px 4px 4px  
4px #AC8161; -webkit-box-shadow:4px 4px  
4px 4px #AC8161; box-shadow:4px 4px 4px  
4px #AC8161 }
```

Background

The CSS property to change the background color of an element to Decimal 11305313 is called "background". The background property can be set on classes, ids or directly on the HTML element.

```
.background, #background, body{  
background:#AC8161 }
```

If only the background color should be changed can be used:

```
.background{ background-color:#AC8161 }
```

This example shows the color as background, it is applied via the CSS property "background".

To optimize and compress your CSS code, you can use our [online CSS compressor and optimizer](#) based on csstidy. If you want to create a linear or radial gradient as background or border, check our [CSS Gradient Generator](#).

Hey! You found this booklet interesting? Support Converting Colors with the new Membership Option!

The pro membership hides all ads, plus gives you double the colors in the color bucket, and more awesome pro features!

[Learn more, Memberships starting at \\$2.50/m!](#)

**Follow me
on Twitter!**

@ConvertingColor