

Converting Colors

Decimal(11305572)

Have a look what the booklet for
Decimal(11305572) contains.

Decimal(11305572)	3
<i>Conversions</i>	4
<i>Details</i>	6
<i>Harmonies</i>	11
<i>Previews</i>	23
<i>Color Blindness Simulation</i>	26
<i>CSS Examples</i>	29

Color

Decimal(11305572)

Conversions

Conversions Part 1

Format	Color
Hex	AC8264
RGB	172, 130, 100
RGB Percent	67%, 51%, 39%
CMY	0.3255, 0.4902, 0.6078
CMYK	0.00, 0.24, 0.42, 0.33
HSL	25°, 30%, 53%
HSV	25°, 42%, 67%
XYZ	27.2961, 25.6560, 15.5700
YIQ	139.1380, 34.6620, -0.4260

Conversions

Conversions Part 2

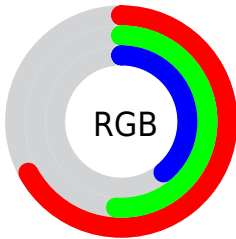
Format	Color
R_{YB}	172, 151, 100
Decimal	11305572
CIE _{Lab}	57.71, 12.17, 22.50
CIE _{LCh}	58, 25.579, 61.591
Yxy	25.6560, 0.3984, 0.3744
Android (android.graphics.Color)	4289495652 (0xFFAC8264)
YUV	139.1380, -19.2950, 28.8200
Hunter-Lab	50.6518, 7.5527, 17.2309

Details

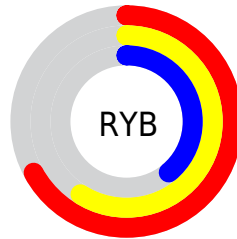
The Decimal color **11305572** is a dark color, and the websafe version is hex **CC9966**. A complement of this color would be **6590124**, and the grayscale version is **9145227**.

A 20% lighter version of the original color is **15054743**, and **7754037** is the 20% darker color. If you saturate the color by 10%, you get **11302995**, and if you desaturate by 10%, it is **11308149**.

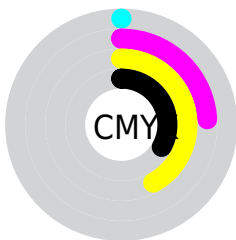
Distribution



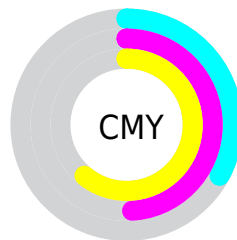
- Red (67%)
- Green (51%)
- Blue (39%)



- Red (67%)
- Yellow (59%)
- Blue (39%)



- Cyan (0%)
- Magenta (24%)
- Yellow (42%)
- Black (33%)



- Cyan (33%)
- Magenta (49%)
- Yellow (61%)

Brightness & Saturation Gradients

These gradients show how the Decimal color 11305572 changes by changing the brightness by 10 percent. The first figure shows a shift by +10% for each color and the second figure -10%.

Similar to the brightness gradients but the following saturation gradients show a change of the Decimal color 11305572 by changing the saturation by 10% instead.

 11305572

 11305572

16777215

 9529676

 15054743

 7754037

 16765874

 6044191

 16773069

 4400137

 16777194

 2822144

 393216

 0

 11305572

 11305572

 11302995

 11308149

■ 11300418

■ 11310726

■ 11297840

■ 11313304

■ 11295263

■ 11315881

■ 11292686

■ 11318458

■ 11290624

■ 11321035

■ 11323612

■ 11326190

■ 11328767

Harmonies

Analogous

The Analogous color harmony consists of three colors that are next to each other on the color wheel.



11959412



11305572



10062430

Triad

The Triadic color harmony groups three colors that are evenly spaced from another and form a triangle on the color wheel.



11305572



5216139



9405617

Complementary

The Complementary color scheme is a pair of colors which are on the opposite of each other on the color wheel.



11305572



6590124

Split Complementary

Split-complementary colors differ from the complementary color scheme. The scheme consists of three colors, the original color and two neighbors of the complement color.



7310519



11305572



4429473

Square

The Square scheme is like the rectangle color scheme, but the four colors are evenly spaced on the color wheel.



11305572



6788469



5346225



11042208

Rectangle

The Rectangle color scheme consists of four colors that form a rectangle on the color wheel.



11305572



9080417



5346225



8751028

Sweetspot

The Sweet Spot groups the original color and five complimentary colors.



11305572



14733251



11297934



7366238



15790320



7368816

Same Dimension

The Same Dimension uses a secret algorithm to generate beautiful new colors.



11305572



14720880



11314532



5722702



9846528



1509888

Inverse Universe

The Inverse Universe completely reimagines the original color for something new.



6590124



7385824



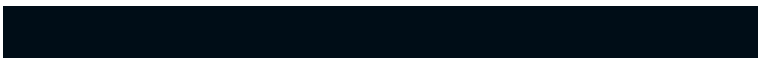
6580908



5133143



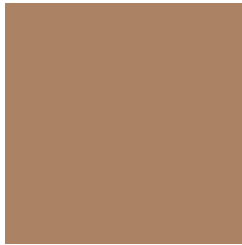
22678



3351

Previews

White Background



This preview shows how the Decimal color 11305572 looks on a white background.

Color Contrast Check

Large Text (above 18pt) WCAG AA ✓ Pass

Any Text WCAG AA × Fail

Large Text (above 18pt) WCAG AAA × Fail

Any Text WCAG AAA × Fail

Black Background



This preview shows how the Decimal color 11305572 looks on a black background.

Color Contrast Check

Large Text (above 18pt) WCAG AA ✓ Pass

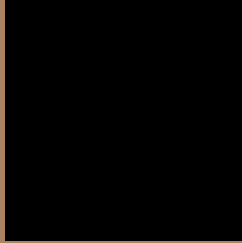
Any Text WCAG AA ✓ Pass

Large Text (above 18pt) WCAG AAA ✓ Pass

Any Text WCAG AAA × Fail

If you want to check with other color combinations, try the [Color Contrast Checker](#).

Decimal 11305572 Background



This preview shows how black text looks on a background with the Decimal color 11305572.



This preview shows how white text looks on a background with the Decimal color 11305572.

Color Blindness Simulation

Color vision deficiency is a very complex topic, and I could not describe the different causes any better than Wikipedia does, so if you want to learn more, you should check out their [article about color blindness](#).


Dichromacy



Original Color
11305572

Protanopia
9800552

Deuteranopia
10847587



Tritanopia
11500935

Trichromacy



Original Color
11305572

Protanomaly
10324071

Deuteranomaly
11043939

Tritanomaly
11435898

Monochromacy



Original Color
11305572

Achromatopsia
9145227

Achromatomaly
9930877

CSS Examples

Text

The CSS property to change the color of the text to Decimal 11305572 is called "color". The color property can be set on classes, ids or directly on the HTML element.

This example shows how text in the color #AC8264 looks like.

```
.text, #text, p{  
  color:#AC8264  
}
```

If you want to add a text shadow in that color use the text-shadow property, you can generate a text shadow directly with our [CSS Text Shadow Generator](#).

Here you see how black text with a 4 pixel #AC8264 colored shadow looks like.

```
.shadow{ text-shadow: 4px 4px 2px #AC8264
}
```

Border

The CSS property to change the border of an element to Decimal 11305572 is called "border". The border property can be set on classes, ids or directly on the HTML element.

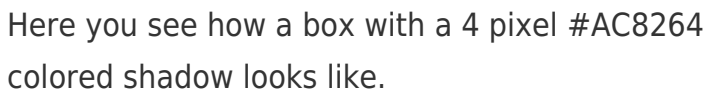
This example shows the color as border, it can be applied via the CSS property "border" or "border-color".

```
.border, #border, table{ border:4px solid
#AC8264 }
```

If only the border color should be changed use the property `border-color`.

```
.border{ border-color:#AC8264 }
```

If you want to add a box shadow in that color use:



Here you see how a box with a 4 pixel #AC8264 colored shadow looks like.

```
.boxshadow{ -moz-box-shadow:4px 4px 4px  
4px #AC8264; -webkit-box-shadow:4px 4px  
4px 4px #AC8264; box-shadow:4px 4px 4px  
4px #AC8264 }
```

Background

The CSS property to change the background color of an element to Decimal 11305572 is called "background". The background property can be set on classes, ids or directly on the HTML element.

```
.background, #background, body{  
background:#AC8264 }
```

If only the background color should be changed can be used:

```
.background{ background-color:#AC8264 }
```

This example shows the color as background, it is applied via the CSS property "background".

To optimize and compress your CSS code, you can use our [online CSS compressor and optimizer](#) based on csstidy. If you want to create a linear or radial gradient as background or border, check our [CSS Gradient Generator](#).

Hey! You found this booklet interesting? Support Converting Colors with the new Membership Option!

The pro membership hides all ads, plus gives you double the colors in the color bucket, and more awesome pro features!

[Learn more, Memberships starting at \\$2.50/m!](#)

**Follow me
on Twitter!**

@ConvertingColor