

Converting Colors

Decimal(11306354)

Have a look what the booklet for
Decimal(11306354) contains.

Decimal(11306354)	3
<i>Conversions</i>	4
<i>Details</i>	6
<i>Harmonies</i>	11
<i>Previews</i>	23
<i>Color Blindness Simulation</i>	26
<i>CSS Examples</i>	29

Color

Decimal(11306354)

Conversions

Conversions Part 1

Format	Color
Hex	AC8572
RGB	172, 133, 114
RGB Percent	67%, 52%, 45%
CMY	0.3255, 0.4784, 0.5529
CMYK	0.00, 0.23, 0.34, 0.33
HSL	20°, 26%, 56%
HSV	20°, 34%, 67%
XYZ	28.4380, 26.7606, 19.5861
YIQ	142.4950, 29.3430, 2.3590

Conversions

Conversions Part 2

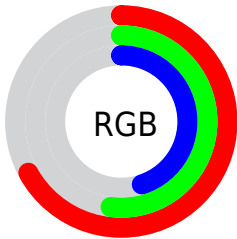
Format	Color
R_{YB}	172, 142, 114
Decimal	11306354
CIE _{Lab}	58.75, 12.21, 15.98
CIE _{LCh}	59, 20.114, 52.620
Yxy	26.7606, 0.3803, 0.3578
Android (android.graphics.Color)	4289496434 (0xFFAC8572)
YUV	142.4950, -14.0480, 25.8759
Hunter-Lab	51.7307, 7.5987, 13.7633

Details

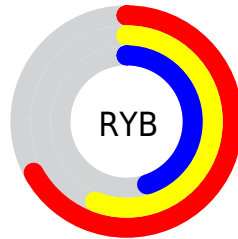
The Decimal color **11306354** is a dark color, and the websafe version is hex **CC9999**. A complement of this color would be **7510444**, and the grayscale version is **9408399**.

A 20% lighter version of the original color is **14989990**, and **7754562** is the 20% darker color. If you saturate the color by 10%, you get **11303265**, and if you desaturate by 10%, it is **11309443**.

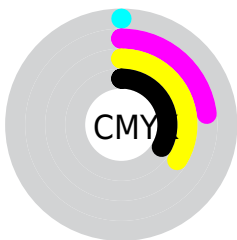
Distribution



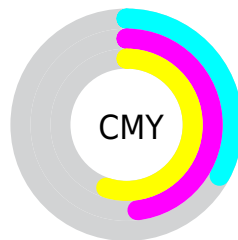
- Red (67%)
- Green (52%)
- Blue (45%)



- Red (67%)
- Yellow (56%)
- Blue (45%)



- Cyan (0%)
- Magenta (23%)
- Yellow (34%)
- Black (33%)



- Cyan (33%)
- Magenta (48%)
- Yellow (55%)

Brightness & Saturation Gradients

These gradients show how the Decimal color 11306354 changes by changing the brightness by 10 percent. The first figure shows a shift by +10% for each color and the second figure -10%.

Similar to the brightness gradients but the following saturation gradients show a change of the Decimal color 11306354 by changing the saturation by 10% instead.



11306354



11306354

16777215



9530457



14989990



7754562



16766657



6110252



16773853



4466199



16777210



2953728



1114112



0



11306354



11306354



11303265



11309443

 11300432

 11312276

 11297342

 11315366

 11294509

 11318199

 11291420

 11321288

 11288587

 11324121

 11286528

 11327210

 11330300

 11333119

Harmonies

Analogous

The Analogous color harmony consists of three colors that are next to each other on the color wheel.



11698561



11306354



10455915

Triad

The Triadic color harmony groups three colors that are evenly spaced from another and form a triangle on the color wheel.



11306354



6723464



9079470

Complementary

The Complementary color scheme is a pair of colors which are on the opposite of each other on the color wheel.



11306354



7510444

Split Complementary

Split-complementary colors differ from the complementary color scheme. The scheme consists of three colors, the original color and two neighbors of the complement color.



7508144



11306354



6002586

Square

The Square scheme is like the rectangle color scheme, but the four colors are evenly spaced on the color wheel.



11306354



7902583



6329769



10519971

Rectangle

The Rectangle color scheme consists of four colors that form a rectangle on the color wheel.



11306354



9670507



6329769



8555695

Sweetspot

The Sweet Spot groups the original color and five complimentary colors.



11306354



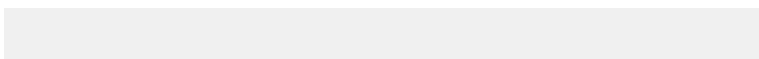
14733770



11301530



7366499



15790320



7368816

Same Dimension

The Same Dimension uses a secret algorithm to generate beautiful new colors.



11306354



14722183



11313522



5722446



9842944



1509376

Inverse Universe

The Inverse Universe completely reimagines the original color for something new.



7510444



8897504



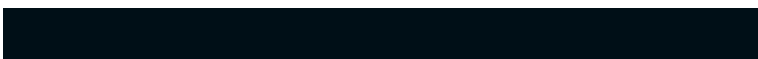
7503276



5133399



26006



3863

Previews

White Background



This preview shows how the Decimal color 11306354 looks on a white background.

Color Contrast Check

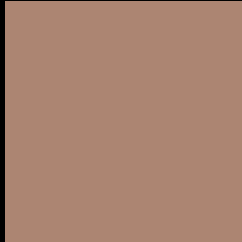
Large Text (above 18pt) WCAG AA ✓ Pass

Any Text WCAG AA × Fail

Large Text (above 18pt) WCAG AAA × Fail

Any Text WCAG AAA × Fail

Black Background



This preview shows how the Decimal color 11306354 looks on a black background.

Color Contrast Check

Large Text (above 18pt) WCAG AA ✓ Pass

Any Text WCAG AA ✓ Pass

Large Text (above 18pt) WCAG AAA ✓ Pass

Any Text WCAG AAA × Fail

If you want to check with other color combinations, try the [Color Contrast Checker](#).

Decimal 11306354 Background



This preview shows how black text looks on a background with the Decimal color 11306354.




This preview shows how white text looks on a background with the Decimal color 11306354.

Color Blindness Simulation

Color vision deficiency is a very complex topic, and I could not describe the different causes any better than Wikipedia does, so if you want to learn more, you should check out their [article about color blindness](#).

Dichromacy





Tritanopia
11501963

Trichromacy



Original Color
11306354

Protanomaly
10324597

Deuteranomaly
11044721

Tritanomaly
11436674

Monochromacy



Original Color
11306354

Achromatopsia
9342606

Achromatomaly
10062724

CSS Examples

Text

The CSS property to change the color of the text to Decimal 11306354 is called "color". The color property can be set on classes, ids or directly on the HTML element.

This example shows how text in the color #AC8572 looks like.

```
.text, #text, p{  
    color:#AC8572  
}
```

If you want to add a text shadow in that color use the text-shadow property, you can generate a text shadow directly with our [CSS Text Shadow Generator](#).

Here you see how black text with a 4 pixel #AC8572 colored shadow looks like.

```
.shadow{ text-shadow: 4px 4px 2px #AC8572
}
```

Border

The CSS property to change the border of an element to Decimal 11306354 is called "border". The border property can be set on classes, ids or directly on the HTML element.

This example shows the color as border, it can be applied via the CSS property "border" or "border-color".

```
.border, #border, table{ border:4px solid
#AC8572 }
```

If only the border color should be changed use the property `border-color`.

```
.border{ border-color:#AC8572 }
```

If you want to add a box shadow in that color use:

Here you see how a box with a 4 pixel #AC8572 colored shadow looks like.

```
.boxshadow{ -moz-box-shadow:4px 4px 4px  
4px #AC8572; -webkit-box-shadow:4px 4px  
4px 4px #AC8572; box-shadow:4px 4px 4px  
4px #AC8572 }
```

Background

The CSS property to change the background color of an element to Decimal 11306354 is called "background". The background property can be set on classes, ids or directly on the HTML element.

```
.background, #background, body{  
background:#AC8572 }
```

If only the background color should be changed can be used:

```
.background{ background-color:#AC8572 }
```

This example shows the color as background, it is applied via the CSS property "background".

To optimize and compress your CSS code, you can use our [online CSS compressor and optimizer](#) based on csstidy. If you want to create a linear or radial gradient as background or border, check our [CSS Gradient Generator](#).

Hey! You found this booklet interesting? Support Converting Colors with the new Membership Option!

The pro membership hides all ads, plus gives you double the colors in the color bucket, and more awesome pro features!

[Learn more, Memberships starting at \\$2.50/m!](#)

**Follow me
on Twitter!**

@ConvertingColor