

Converting Colors

Decimal(11306624)

Have a look what the booklet for
Decimal(11306624) contains.

Decimal(11306624)	3
<i>Conversions</i>	4
<i>Details</i>	6
<i>Harmonies</i>	11
<i>Previews</i>	23
<i>Color Blindness Simulation</i>	26
<i>CSS Examples</i>	29

Color

Decimal(11306624)

Conversions

Conversions Part 1

Format	Color
Hex	AC8680
RGB	172, 134, 128
RGB Percent	67%, 53%, 50%
CMY	0.3255, 0.4745, 0.4980
CMYK	0.00, 0.22, 0.26, 0.33
HSL	8°, 21%, 59%
HSV	8°, 26%, 67%
XYZ	29.4346, 27.3794, 24.1554
YIQ	144.6780, 24.5740, 6.1900

Conversions

Conversions Part 2

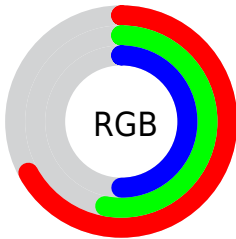
Format	Color
R_{YB}	172, 135, 128
Decimal	11306624
CIE _{Lab}	59.32, 13.61, 8.80
CIE _{LCh}	59, 16.204, 32.875
Yxy	27.3794, 0.3635, 0.3381
Android (android.graphics.Color)	4289496704 (0xFFAC8680)
YUV	144.6780, -8.2223, 23.9614
Hunter-Lab	52.3253, 8.8426, 9.2571

Details

The Decimal color **11306624** is a dark color, and the websafe version is hex **CC9999**. A complement of this color would be **8431276**, and the grayscale version is **9539985**.

A 20% lighter version of the original color is **14990261**, and **7820367** is the 20% darker color. If you saturate the color by 10%, you get **11302767**, and if you desaturate by 10%, it is **11310481**.

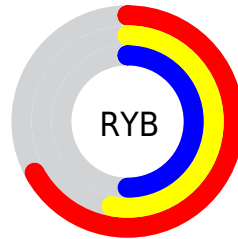
Distribution



Red (67%)

Green (53%)

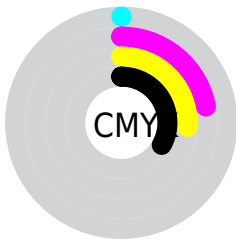
Blue (50%)



Red (67%)

Yellow (53%)

Blue (50%)

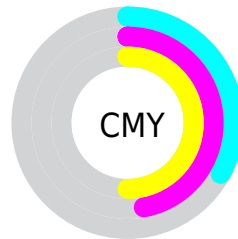


Cyan (0%)

Magenta (22%)

Yellow (26%)

Black (33%)



Cyan (33%)

Magenta (47%)

Yellow (50%)

Brightness & Saturation Gradients

These gradients show how the Decimal color 11306624 changes by changing the brightness by 10 percent. The first figure shows a shift by +10% for each color and the second figure -10%.

Similar to the brightness gradients but the following saturation gradients show a change of the Decimal color 11306624 by changing the saturation by 10% instead.

 11306624

 11306624

16777215

 9530727

 14990261

 7820367

 16766928

 6110520

 16774381

 4532003

 3019277

 1507328

 0


 11306624

 11306624

 11302767

 11310481

 11298910

 11314338

 11295052

 11318196

 11291451

 11321797

 11287594

 11325654

 11283737

 11329511

 11279880

 11333368

 11278080

 11337215

 11337727

Harmonies

Analogous

The Analogous color harmony consists of three colors that are next to each other on the color wheel.



11240846



11306624



10848886

Triad

The Triadic color harmony groups three colors that are evenly spaced from another and form a triangle on the color wheel.



11306624



7968385



8425643

Complementary

The Complementary color scheme is a pair of colors which are on the opposite of each other on the color wheel.



11306624



8431276

Split Complementary

Split-complementary colors differ from the complementary color scheme. The scheme consists of three colors, the original color and two neighbors of the complement color.



7378088



11306624



7116688

Square

The Square scheme is like the rectangle color scheme, but the four colors are evenly spaced on the color wheel.



11306624



9016183



6919838



9669543

Rectangle

The Rectangle color scheme consists of four colors that form a rectangle on the color wheel.



11306624



10325363



6919838



8032683

Sweetspot

The Sweet Spot groups the original color and five complimentary colors.



11306624



14733774



11305126



7366501



15790320



7368816

Same Dimension

The Same Dimension uses a secret algorithm to generate beautiful new colors.



11306624



14722203



11312256



5721934



9835776



1508096

Inverse Universe

The Inverse Universe completely reimagines the original color for something new.



8431276



10213344



8425644



5133911



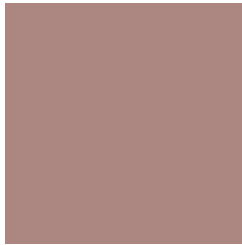
33430



5143

Previews

White Background



This preview shows how the Decimal color 11306624 looks on a white background.

Color Contrast Check

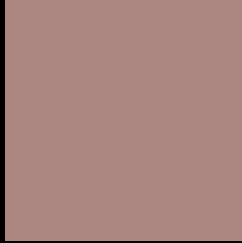
Large Text (above 18pt) WCAG AA ✓ Pass

Any Text WCAG AA × Fail

Large Text (above 18pt) WCAG AAA × Fail

Any Text WCAG AAA × Fail

Black Background



This preview shows how the Decimal color 11306624 looks on a black background.

Color Contrast Check

Large Text (above 18pt) WCAG AA ✓ Pass

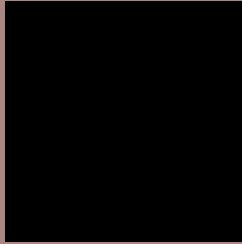
Any Text WCAG AA ✓ Pass

Large Text (above 18pt) WCAG AAA ✓ Pass

Any Text WCAG AAA × Fail

If you want to check with other color combinations, try the [Color Contrast Checker](#).

Decimal 11306624 Background



This preview shows how black text looks on a background with the Decimal color 11306624.




This preview shows how white text looks on a background with the Decimal color 11306624.

Color Blindness Simulation

Color vision deficiency is a very complex topic, and I could not describe the different causes any better than Wikipedia does, so if you want to learn more, you should check out their [article about color blindness](#).

Dichromacy





Tritanopia
11437198

Trichromacy



Original Color
11306624

Protanomaly
10325123

Deuteranomaly
10914175

Tritanomaly
11371913

Monochromacy



Original Color
11306624

Achromatopsia
9539985

Achromatomaly
10194315

CSS Examples

Text

The CSS property to change the color of the text to Decimal 11306624 is called "color". The color property can be set on classes, ids or directly on the HTML element.

This example shows how text in the color #AC8680 looks like.

```
.text, #text, p{  
    color:#AC8680  
}
```

If you want to add a text shadow in that color use the text-shadow property, you can generate a text shadow directly with our [CSS Text Shadow Generator](#).

Here you see how black text with a 4 pixel #AC8680 colored shadow looks like.

```
.shadow{ text-shadow: 4px 4px 2px #AC8680
}
```

Border

The CSS property to change the border of an element to Decimal 11306624 is called "border". The border property can be set on classes, ids or directly on the HTML element.

This example shows the color as border, it can be applied via the CSS property "border" or "border-color".

```
.border, #border, table{ border:4px solid
#AC8680 }
```

If only the border color should be changed use the property `border-color`.

```
.border{ border-color:#AC8680 }
```

If you want to add a box shadow in that color use:

Here you see how a box with a 4 pixel #AC8680 colored shadow looks like.

```
.boxshadow{ -moz-box-shadow:4px 4px 4px  
4px #AC8680; -webkit-box-shadow:4px 4px  
4px 4px #AC8680; box-shadow:4px 4px 4px  
4px #AC8680 }
```

Background

The CSS property to change the background color of an element to Decimal 11306624 is called "background". The background property can be set on classes, ids or directly on the HTML element.

```
.background, #background, body{  
background:#AC8680 }
```

If only the background color should be changed can be used:

```
.background{ background-color:#AC8680 }
```

This example shows the color as background, it is applied via the CSS property "background".

To optimize and compress your CSS code, you can use our [online CSS compressor and optimizer](#) based on csstidy. If you want to create a linear or radial gradient as background or border, check our [CSS Gradient Generator](#).

Hey! You found this booklet interesting? Support Converting Colors with the new Membership Option!

The pro membership hides all ads, plus gives you double the colors in the color bucket, and more awesome pro features!

[Learn more, Memberships starting at \\$2.50/m!](#)

**Follow me
on Twitter!**

@ConvertingColor