

Converting Colors

Decimal(11309687)

Have a look what the booklet for
Decimal(11309687) contains.

Decimal(11309687)	3
<i>Conversions</i>	4
<i>Details</i>	6
<i>Harmonies</i>	11
<i>Previews</i>	23
<i>Color Blindness Simulation</i>	26
<i>CSS Examples</i>	29

Color

Decimal(11309687)

Conversions

Conversions Part 1

Format	Color
Hex	AC9277
RGB	172, 146, 119
RGB Percent	67%, 57%, 47%
CMY	0.3255, 0.4275, 0.5333
CMYK	0.00, 0.15, 0.31, 0.33
HSL	31°, 24%, 57%
HSV	31°, 31%, 67%
XYZ	30.6219, 30.6603, 21.7569
YIQ	150.6960, 24.1630, -2.8850

Conversions

Conversions Part 2

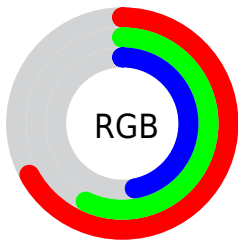
Format	Color
RYB	170, 172, 119
Decimal	11309687
CIELab	62.22, 5.61, 17.94
CIElCh	62, 18.795, 72.619
Yxy	30.6603, 0.3688, 0.3692
Android (android.graphics.Color)	4289499767 (0xFFAC9277)
YUV	150.6960, -15.6261, 18.6836
Hunter-Lab	55.3718, 1.8142, 15.4638

Details

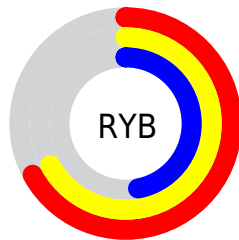
The Decimal color **11309687** is a dark color, and the websafe version is hex **999966**. A complement of this color would be **7836076**, and the grayscale version is **9934743**.

A 20% lighter version of the original color is **14993579**, and **7823430** is the 20% darker color. If you saturate the color by 10%, you get **11307622**, and if you desaturate by 10%, it is **11311752**.

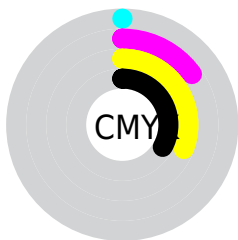
Distribution



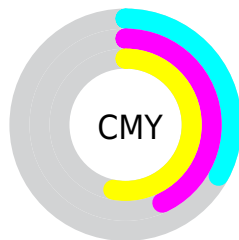
- Red (67%)
- Green (57%)
- Blue (47%)



- Red (67%)
- Yellow (67%)
- Blue (47%)



- Cyan (0%)
- Magenta (15%)
- Yellow (31%)
- Black (33%)



- Cyan (33%)
- Magenta (43%)
- Yellow (53%)

Brightness & Saturation Gradients

These gradients show how the Decimal color 11309687 changes by changing the brightness by 10 percent. The first figure shows a shift by +10% for each color and the second figure -10%.

Similar to the brightness gradients but the following saturation gradients show a change of the Decimal color 11309687 by changing the saturation by 10% instead.



11309687



11309687

16777215



9533534



14993579



7823430



16770247



6113328



16777187



4534555



3021825



1442560



0



11309687



11309687



11307622



11311752

■ 11305301

■ 11314073

■ 11303235

■ 11316139

■ 11300914

■ 11318460

■ 11298849

■ 11320525

■ 11296528

■ 11322846

■ 11294720

■ 11324911

■ 11327231

■ 11329279

Harmonies

Analogous

The Analogous color harmony consists of three colors that are next to each other on the color wheel.



11963777



11309687



10262646

Triad

The Triadic color harmony groups three colors that are evenly spaced from another and form a triangle on the color wheel.



11309687



6987933



10653871

Complementary

The Complementary color scheme is a pair of colors which are on the opposite of each other on the color wheel.



11309687



7836076

Split Complementary

Split-complementary colors differ from the complementary color scheme. The scheme consists of three colors, the original color and two neighbors of the complement color.



9213367



11309687



6987436

Square

The Square scheme is like the rectangle color scheme, but the four colors are evenly spaced on the color wheel.



11309687



7839628



7838646



11701409

Rectangle

The Rectangle color scheme consists of four colors that form a rectangle on the color wheel.



11309687



9411450



7838646



10195634

Sweetspot

The Sweet Spot groups the original color and five complimentary colors.



11309687



14735052



11302802



7367268



15790320



7368816

Same Dimension

The Same Dimension uses a secret algorithm to generate beautiful new colors.



11309687



14727309



11316343



5722702



9850112



1510400

Inverse Universe

The Inverse Universe completely reimagines the original color for something new.



7836076



9287392



7829420



5132887



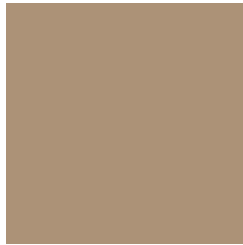
19094



2839

Previews

White Background



This preview shows how the Decimal color 11309687 looks on a white background.

Color Contrast Check

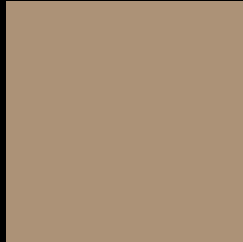
Large Text (above 18pt) WCAG AA × Fail

Any Text WCAG AA × Fail

Large Text (above 18pt) WCAG AAA × Fail

Any Text WCAG AAA × Fail

Black Background



This preview shows how the Decimal color 11309687 looks on a black background.

Color Contrast Check

Large Text (above 18pt) WCAG AA ✓ Pass

Any Text WCAG AA ✓ Pass

Large Text (above 18pt) WCAG AAA ✓ Pass

Any Text WCAG AAA ✓ Pass

If you want to check with other color combinations, try the [Color Contrast Checker](#).

Decimal 11309687 Background



This preview shows how black text looks on a background with the Decimal color 11309687.



This preview shows how white text looks on a background with the Decimal color 11309687.

Color Blindness Simulation

Color vision deficiency is a very complex topic, and I could not describe the different causes any better than Wikipedia does, so if you want to learn more, you should check out their [article about color blindness](#).

Dichromacy





Tritanopia
11570584

Trichromacy



Original Color
11309687

Protanomaly
10786168

Deuteranomaly
11506039

Tritanomaly
11505548

Monochromacy



Original Color
11309687

Achromatopsia
9934743

Achromatomaly
10458507

CSS Examples

Text

The CSS property to change the color of the text to Decimal 11309687 is called "color". The color property can be set on classes, ids or directly on the HTML element.

This example shows how text in the color #AC9277 looks like.

```
.text, #text, p{  
    color:#AC9277  
}
```

If you want to add a text shadow in that color use the text-shadow property, you can generate a text shadow directly with our [CSS Text Shadow Generator](#).

Here you see how black text with a 4 pixel #AC9277 colored shadow looks like.

```
.shadow{ text-shadow: 4px 4px 2px #AC9277  
}
```

Border

The CSS property to change the border of an element to Decimal 11309687 is called "border". The border property can be set on classes, ids or directly on the HTML element.

This example shows the color as border, it can be applied via the CSS property "border" or "border-color".

```
.border, #border, table{ border:4px solid  
#AC9277 }
```

If only the border color should be changed use the property `border-color`.

```
.border{ border-color:#AC9277 }
```

If you want to add a box shadow in that color use:

Here you see how a box with a 4 pixel #AC9277 colored shadow looks like.

```
.boxshadow{ -moz-box-shadow:4px 4px 4px  
4px #AC9277; -webkit-box-shadow:4px 4px  
4px 4px #AC9277; box-shadow:4px 4px 4px  
4px #AC9277 }
```

Background

The CSS property to change the background color of an element to Decimal 11309687 is called "background". The background property can be set on classes, ids or directly on the HTML element.

```
.background, #background, body{  
background:#AC9277 }
```

If only the background color should be changed can be used:

```
.background{ background-color:#AC9277 }
```

This example shows the color as background, it is applied via the CSS property "background".

To optimize and compress your CSS code, you can use our [online CSS compressor and optimizer](#) based on csstidy. If you want to create a linear or radial gradient as background or border, check our [CSS Gradient Generator](#).

Hey! You found this booklet interesting? Support Converting Colors with the new Membership Option!

The pro membership hides all ads, plus gives you double the colors in the color bucket, and more awesome pro features!

[Learn more, Memberships starting at \\$2.50/m!](#)

**Follow me
on Twitter!**

@ConvertingColor