

# Converting Colors

Decimal(11365226)

Have a look what the booklet for  
Decimal(11365226) contains.

<b>Decimal(11365226)</b> .....	3
<i><b>Conversions</b></i> .....	4
<i><b>Details</b></i> .....	6
<i><b>Harmonies</b></i> .....	11
<i><b>Previews</b></i> .....	23
<i><b>Color Blindness Simulation</b></i> .....	26
<i><b>CSS Examples</b></i> .....	29

# Color

**Decimal(11365226)**

# Conversions

## Conversions Part 1

<b>Format</b>	<b>Color</b>
Hex	AD6B6A
RGB	173, 107, 106
RGB Percent	68%, 42%, 42%
CMY	0.3216, 0.5804, 0.5843
CMYK	0.00, 0.38, 0.39, 0.32
HSL	1°, 29%, 55%
HSV	1°, 39%, 68%
XYZ	25.0928, 20.4402, 16.2585
YIQ	126.6200, 39.6570, 13.6810

# Conversions

## Conversions Part 2

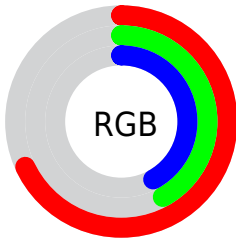
<b>Format</b>	<b>Color</b>
R <sub>Y</sub> B	173, 107, 106
Decimal	11365226
CIE Lab	52.33, 26.22, 11.71
CIE LCh	52, 28.718, 24.058
Yxy	20.4402, 0.4061, 0.3308
Android (android.graphics.Color)	4289555306 (0xFFAD6B6A)
YUV	126.6200, -10.1657, 40.6753
Hunter-Lab	45.2109, 19.9515, 10.3261

# Details

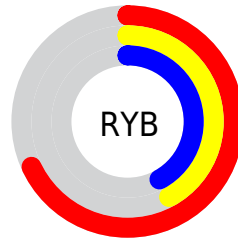
The Decimal color **11365226** is a dark color, and the websafe version is hex **996666**. A complement of this color would be **6991021**, and the grayscale version is **8355711**.

A 20% lighter version of the original color is **15114141**, and **7748155** is the 20% darker color. If you saturate the color by 10%, you get **11360857**, and if you desaturate by 10%, it is **11369595**.

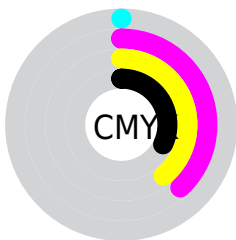
# Distribution



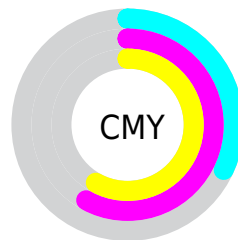
- Red (68%)
- Green (42%)
- Blue (42%)



- Red (68%)
- Yellow (42%)
- Blue (42%)



- Cyan (0%)
- Magenta (38%)
- Yellow (39%)
- Black (32%)



- Cyan (32%)
- Magenta (58%)
- Yellow (58%)

# Brightness & Saturation Gradients

These gradients show how the Decimal color 11365226 changes by changing the brightness by 10 percent. The first figure shows a shift by +10% for each color and the second figure -10%.

Similar to the brightness gradients but the following saturation gradients show a change of the Decimal color 11365226 by changing the saturation by 10% instead.



 11365226	 11365226
 16777215	 9523794
 15114141	 7748155
 16759480	 6038309
 16766676	 4328465
 16774128	 2883584
	 0

 11365226	 11365226
 11360857	 11369595
 11356487	 11373965

 11352118

 11378334

 11347749

 11382703

 11343380

 11387073

 11339010

 11391442

 11338496

 11395811

 11400180

 11403263

# Harmonies

## Analogous

The Analogous color harmony consists of three colors that are next to each other on the color wheel.



11102851



11365226



10776918

# Triad

The Triadic color harmony groups three colors that are evenly spaced from another and form a triangle on the color wheel.



11365226



6063967



5407149

# Complementary

The Complementary color scheme is a pair of colors which are on the opposite of each other on the color wheel.



11365226



6991021

# Split Complementary

Split-complementary colors differ from the complementary color scheme. The scheme consists of three colors, the original color and two neighbors of the complement color.



2787236



11365226



4033143

# Square

The Square scheme is like the rectangle color scheme, but the four colors are evenly spaced on the color wheel.



11365226



7962959



2132624



7960746

# Rectangle

The Rectangle color scheme consists of four colors that form a rectangle on the color wheel.



11365226



10057550



2132624



4490156



# Sweetspot

The Sweet Spot groups the original color and five complimentary colors.



11365226



14730949



11365037



7364960



15790320



7368816



# Same Dimension

The Same Dimension uses a secret algorithm to generate beautiful new colors.



11365226



14711673



11373674



5721678



9830912



1507328



# Inverse Universe

The Inverse Universe completely reimagines the original color for something new.



6991021



7987168



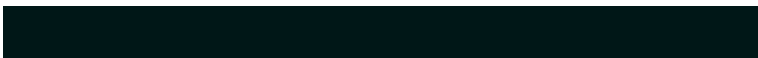
6982829



5134167



38038

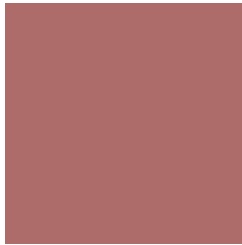


5911



# Previews

## White Background



This preview shows how the Decimal color 11365226 looks on a white background.

## Color Contrast Check

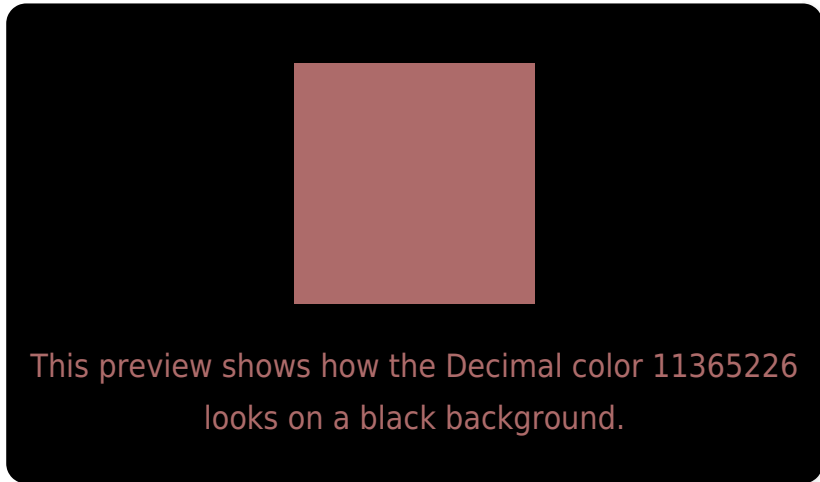
Large Text (above 18pt) WCAG AA ✓ Pass

Any Text WCAG AA × Fail

Large Text (above 18pt) WCAG AAA × Fail

Any Text WCAG AAA × Fail

# Black Background



## Color Contrast Check

Large Text (above 18pt) WCAG AA ✓ Pass

Any Text WCAG AA ✓ Pass

Large Text (above 18pt) WCAG AAA ✓ Pass

Any Text WCAG AAA × Fail

If you want to check with other color combinations, try the [Color Contrast Checker](#).



## Decimal 11365226 Background



This preview shows how black text looks on a background with the Decimal color 11365226.

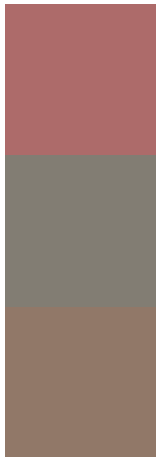


This preview shows how white text looks on a background with the Decimal color 11365226.

# Color Blindness Simulation

Color vision deficiency is a very complex topic, and I could not describe the different causes any better than Wikipedia does, so if you want to learn more, you should check out their [article about color blindness](#).

## Dichromacy



**Original Color**  
11365226

**Protanopia**  
8551795

**Deuteranopia**  
9533544



**Tritanopia**  
11430514

# Trichromacy



**Original Color**  
11365226

**Protanomaly**  
9598576

**Deuteranomaly**  
10187625

**Tritanomaly**  
11430511

# Monochromacy



**Original Color**  
11365226

**Achromatopsia**  
8355711

**Achromatomaly**  
9468023

# CSS Examples

## Text

The CSS property to change the color of the text to Decimal 11365226 is called "color". The color property can be set on classes, ids or directly on the HTML element.

This example shows how text in the color #AD6B6A looks like.

```
.text, #text, p{  
  color:#AD6B6A  
}
```

If you want to add a text shadow in that color use the text-shadow property, you can generate a text shadow directly with our [CSS Text Shadow Generator](#).

Here you see how black text with a 4 pixel #AD6B6A colored shadow looks like.

```
.shadow{ text-shadow: 4px 4px 2px #AD6B6A
}
```

## Border

The CSS property to change the border of an element to Decimal 11365226 is called "border". The border property can be set on classes, ids or directly on the HTML element.

This example shows the color as border, it can be applied via the CSS property "border" or "border-color".

```
.border, #border, table{ border:4px solid
#AD6B6A }
```

If only the border color should be changed use the property `border-color`.

```
.border{ border-color:#AD6B6A }
```

If you want to add a box shadow in that color use:

Here you see how a box with a 4 pixel #AD6B6A colored shadow looks like.

```
.boxshadow{ -moz-box-shadow:4px 4px 4px  
4px #AD6B6A; -webkit-box-shadow:4px 4px  
4px 4px #AD6B6A; box-shadow:4px 4px 4px  
4px #AD6B6A }
```

# Background

The CSS property to change the background color of an element to Decimal 11365226 is called "background". The background property can be set on classes, ids or directly on the HTML element.

```
.background, #background, body{  
background:#AD6B6A }
```

If only the background color should be changed can be used:

```
.background{ background-color:#AD6B6A }
```

This example shows the color as background, it is applied via the CSS property "background".

To optimize and compress your CSS code, you can use our [online CSS compressor and optimizer](#) based on csstidy. If you want to create a linear or radial gradient as background or border, check our [CSS Gradient Generator](#).



Hey! You found this booklet interesting? Support Converting Colors with the new Membership Option!

The pro membership hides all ads, plus gives you double the colors in the color bucket, and more awesome pro features!

**[Learn more, Memberships starting at \\$2.50/m!](#)**

**Follow me  
on Twitter!**

@ConvertingColor