

# Converting Colors

Decimal(11368019)

Have a look what the booklet for  
Decimal(11368019) contains.

<b>Decimal(11368019)</b> .....	3
<i><b>Conversions</b></i> .....	4
<i><b>Details</b></i> .....	6
<i><b>Harmonies</b></i> .....	11
<i><b>Previews</b></i> .....	23
<i><b>Color Blindness Simulation</b></i> .....	26
<i><b>CSS Examples</b></i> .....	29

# Color

**Decimal(11368019)**

# Conversions

## Conversions Part 1

<b>Format</b>	<b>Color</b>
Hex	AD7653
RGB	173, 118, 83
RGB Percent	68%, 46%, 33%
CMY	0.3216, 0.5373, 0.6745
CMYK	0.00, 0.32, 0.52, 0.32
HSL	23°, 35%, 50%
HSV	23°, 52%, 68%
XYZ	25.2733, 22.4656, 11.1879
YIQ	130.4550, 44.0150, 0.7750

# Conversions

## Conversions Part 2

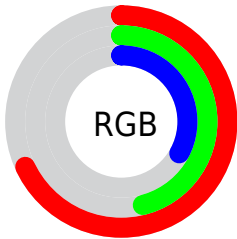
<b>Format</b>	<b>Color</b>
<b>R<sub>YB</sub></b>	173, 140, 83
Decimal	11368019
CIE Lab	54.52, 17.57, 27.91
CIE LCh	55, 32.976, 57.809
Yxy	22.4656, 0.4289, 0.3812
Android (android.graphics.Color)	4289558099 (0xFFAD7653)
YUV	130.4550, -23.3953, 37.3120
Hunter-Lab	47.3979, 12.2327, 19.1837

# Details

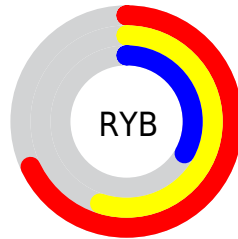
The Decimal color **11368019** is a dark color, and the websafe version is hex **996633**. A complement of this color would be **5474989**, and the grayscale version is **8618883**.

A 20% lighter version of the original color is **15182469**, and **7750949** is the 20% darker color. If you saturate the color by 10%, you get **11365186**, and if you desaturate by 10%, it is **11370852**.

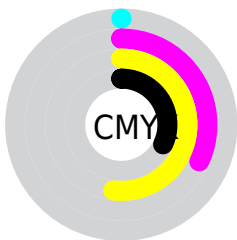
# Distribution



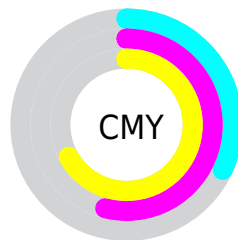
- Red (68%)
- Green (46%)
- Blue (33%)



- Red (68%)
- Yellow (55%)
- Blue (33%)



- Cyan (0%)
- Magenta (32%)
- Yellow (52%)
- Black (32%)



- Cyan (32%)
- Magenta (54%)
- Yellow (67%)

# Brightness & Saturation Gradients


These gradients show how the Decimal color 11368019 changes by changing the brightness by 10 percent. The first figure shows a shift by +10% for each color and the second figure -10%.

Similar to the brightness gradients but the following saturation gradients show a change of the Decimal color 11368019 by changing the saturation by 10% instead.



 11368019       11368019

16777215       9526587

 15182469       7750949

 16762527       5975823

 16769722       4331776

 16776918       2621952

 16777203       0

 11368019       11368019

 11365186       11370852

 11362608       11373430

■ 11359775

■ 11376263

■ 11357198

■ 11378840

■ 11354880

■ 11381674

■ 11384251

■ 11387084

■ 11389917

■ 11392495

# Harmonies

## Analogous

The Analogous color harmony consists of three colors that are next to each other on the color wheel.



12152425



11368019



9928777

# Triad

The Triadic color harmony groups three colors that are evenly spaced from another and form a triangle on the color wheel.



11368019



3051903



8551605

# Complementary

The Complementary color scheme is a pair of colors which are on the opposite of each other on the color wheel.



11368019



5474989

# Split Complementary

Split-complementary colors differ from the complementary color scheme. The scheme consists of three colors, the original color and two neighbors of the complement color.



5539515



11368019



37276

# Square

The Square scheme is like the rectangle color scheme, but the four colors are evenly spaced on the color wheel.



11368019



5803875



1281458



10777249

# Rectangle

The Rectangle color scheme consists of four colors that form a rectangle on the color wheel.



11368019



8685131



1281458



7634873



# Sweetspot

The Sweet Spot groups the original color and five complimentary colors.



11368019



14731964



11359115



7365467



15790320



7368816



# Same Dimension

The Same Dimension uses a secret algorithm to generate beautiful new colors.



11368019



14715733



11379539



5722446



9845504



1509632



# Inverse Universe

The Inverse Universe completely reimagines the original color for something new.



5474989



5614304



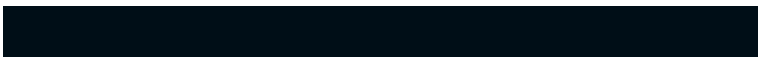
5463469



5133143



23702

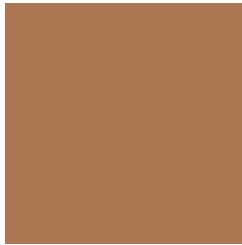


3607



# Previews

## White Background



This preview shows how the Decimal color 11368019 looks on a white background.

## Color Contrast Check

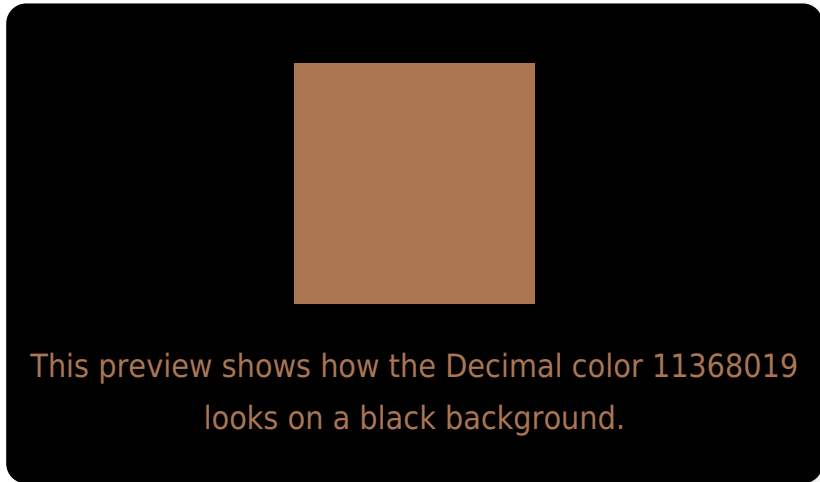
Large Text (above 18pt) WCAG AA ✓ Pass

Any Text WCAG AA × Fail

Large Text (above 18pt) WCAG AAA × Fail

Any Text WCAG AAA × Fail

# Black Background



## Color Contrast Check

Large Text (above 18pt) WCAG AA ✓ Pass

Any Text WCAG AA ✓ Pass

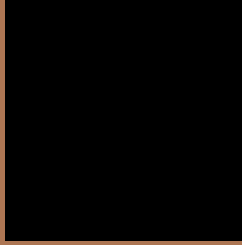
Large Text (above 18pt) WCAG AAA ✓ Pass

Any Text WCAG AAA × Fail

If you want to check with other color combinations, try the [Color Contrast Checker](#).



## Decimal 11368019 Background



This preview shows how black text looks on a background with the Decimal color 11368019.




This preview shows how white text looks on a background with the Decimal color 11368019.

# Color Blindness Simulation

Color vision deficiency is a very complex topic, and I could not describe the different causes any better than Wikipedia does, so if you want to learn more, you should check out their [article about color blindness](#).

## Dichromacy





**Tritanopia**  
11563386

# Trichromacy



**Original Color**  
11368019

**Protanomaly**  
10059350

**Deuteranomaly**  
10713682

**Tritanomaly**  
11498348

# Monochromacy



**Original Color**  
11368019

**Achromatopsia**  
8553090

**Achromatomaly**  
9600625

# CSS Examples

## Text

The CSS property to change the color of the text to Decimal 11368019 is called "color". The color property can be set on classes, ids or directly on the HTML element.

This example shows how text in the color #AD7653 looks like.

```
.text, #text, p{  
    color:#AD7653  
}
```

If you want to add a text shadow in that color use the text-shadow property, you can generate a text shadow directly with our [CSS Text Shadow Generator](#).

Here you see how black text with a 4 pixel #AD7653 colored shadow looks like.

```
.shadow{ text-shadow: 4px 4px 2px #AD7653
}
```

## Border

The CSS property to change the border of an element to Decimal 11368019 is called "border". The border property can be set on classes, ids or directly on the HTML element.

This example shows the color as border, it can be applied via the CSS property "border" or "border-color".

```
.border, #border, table{ border:4px solid
#AD7653 }
```

If only the border color should be changed use the property `border-color`.

```
.border{ border-color:#AD7653 }
```

If you want to add a box shadow in that color use:

Here you see how a box with a 4 pixel #AD7653 colored shadow looks like.

```
.boxshadow{ -moz-box-shadow:4px 4px 4px  
4px #AD7653; -webkit-box-shadow:4px 4px  
4px 4px #AD7653; box-shadow:4px 4px 4px  
4px #AD7653 }
```

# Background

The CSS property to change the background color of an element to Decimal 11368019 is called "background". The background property can be set on classes, ids or directly on the HTML element.

```
.background, #background, body{  
background:#AD7653 }
```

If only the background color should be changed can be used:

```
.background{ background-color:#AD7653 }
```

This example shows the color as background, it is applied via the CSS property "background".

To optimize and compress your CSS code, you can use our [online CSS compressor and optimizer](#) based on csstidy. If you want to create a linear or radial gradient as background or border, check our [CSS Gradient Generator](#).



Hey! You found this booklet interesting? Support Converting Colors with the new Membership Option!

The pro membership hides all ads, plus gives you double the colors in the color bucket, and more awesome pro features!

**[Learn more, Memberships starting at \\$2.50/m!](#)**

**Follow me  
on Twitter!**

@ConvertingColor