

# Converting Colors

Decimal(11369277)

Have a look what the booklet for  
Decimal(11369277) contains.

<b>Decimal(11369277)</b> .....	3
<b><i>Conversions</i></b> .....	4
<b><i>Details</i></b> .....	6
<b><i>Harmonies</i></b> .....	11
<b><i>Previews</i></b> .....	23
<b><i>Color Blindness Simulation</i></b> .....	26
<b><i>CSS Examples</i></b> .....	29

**Color**

**Decimal(11369277)**

# Conversions

## Conversions Part 1

<b>Format</b>	<b>Color</b>
Hex	AD7B3D
RGB	173, 123, 61
RGB Percent	68%, 48%, 24%
CMY	0.3216, 0.5176, 0.7608
CMYK	0.00, 0.29, 0.65, 0.32
HSL	33°, 48%, 46%
HSV	33°, 65%, 68%
XYZ	25.1588, 23.3871, 7.6030
YIQ	130.8820, 49.7020, -8.6820

# Conversions

## Conversions Part 2

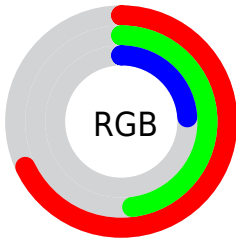
<b>Format</b>	<b>Color</b>
<b>RYB</b>	151, 173, 61
Decimal	11369277
CIELab	55.47, 12.98, 40.86
CIELCh	55, 42.876, 72.377
Yxy	23.3871, 0.4481, 0.4165
Android (android.graphics.Color)	4289559357 (0xFFAD7B3D)
YUV	130.8820, -34.4518, 36.9375
Hunter-Lab	48.3602, 8.2323, 24.5308

# Details

The Decimal color **11369277** is a dark color, and the websafe version is hex **996633**. A complement of this color would be **4026285**, and the grayscale version is **8618883**.

A 20% lighter version of the original color is **15183727**, and **7686667** is the 20% darker color. If you saturate the color by 10%, you get **11367212**, and if you desaturate by 10%, it is **11371342**.

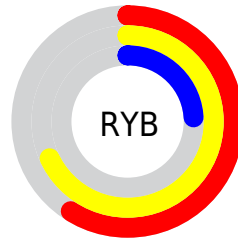
# Distribution



Red (68%)

Green (48%)

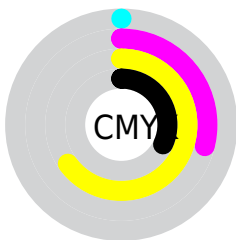
Blue (24%)



Red (59%)

Yellow (68%)

Blue (24%)

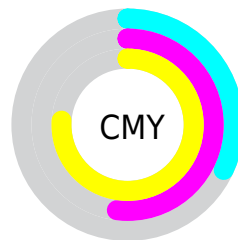


Cyan (0%)

Magenta (29%)

Yellow (65%)

Black (32%)



Cyan (32%)

Magenta (52%)

Yellow (76%)

# Brightness & Saturation Gradients

These gradients show how the Decimal color 11369277 changes by changing the brightness by 10 percent. The first figure shows a shift by +10% for each color and the second figure -10%.

Similar to the brightness gradients but the following saturation gradients show a change of the Decimal color 11369277 by changing the saturation by 10% instead.



 11369277  11369277

16777215  9527845

 15183727  7686667

 16763785  5911552

 16770979  4136448

 16777151  2492672

 16777179  0

 16777208

 11369277  11369277

 11367212  11371342

■ 11365402

■ 11373152

■ 11363337

■ 11375217

■ 11362304

■ 11377282

■ 11379347

■ 11381157

■ 11383222

■ 11385287

■ 11387353

# Harmonies

## Analogous

The Analogous color harmony consists of three colors that are next to each other on the color wheel.



12873300



11369277



9209913

# Triad

The Triadic color harmony groups three colors that are evenly spaced from another and form a triangle on the color wheel.



11369277



39060



10253756

# Complementary

The Complementary color scheme is a pair of colors which are on the opposite of each other on the color wheel.



11369277



4026285

# Split Complementary

Split-complementary colors differ from the complementary color scheme. The scheme consists of three colors, the original color and two neighbors of the complement color.



6456525



11369277



38582

# Square

The Square scheme is like the rectangle color scheme, but the four colors are evenly spaced on the color wheel.



11369277



2528877



36811



12478876

# Rectangle

The Rectangle color scheme consists of four colors that form a rectangle on the color wheel.



11369277



7507523



36811



9140932



# Sweetspot

The Sweet Spot groups the original color and five complimentary colors.



11369277



14732726



11353455



7365974



15790320



7368816



# Same Dimension

The Same Dimension uses a secret algorithm to generate beautiful new colors.



11369277



14717489



10988861



5722958



9851648



1510656



# Inverse Universe

The Inverse Universe completely reimagines the original color for something new.



4026285



3244256



4406701



5132887



17302

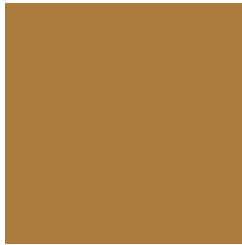


2583



# Previews

## White Background



This preview shows how the Decimal color 11369277 looks on a white background.

## Color Contrast Check

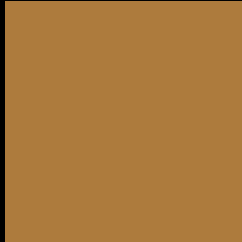
Large Text (above 18pt) WCAG AA ✓ Pass

Any Text WCAG AA × Fail

Large Text (above 18pt) WCAG AAA × Fail

Any Text WCAG AAA × Fail

# Black Background



This preview shows how the Decimal color 11369277 looks on a black background.

## Color Contrast Check

Large Text (above 18pt) WCAG AA ✓ Pass

Any Text WCAG AA ✓ Pass

Large Text (above 18pt) WCAG AAA ✓ Pass

Any Text WCAG AAA × Fail

If you want to check with other color combinations, try the [Color Contrast Checker](#).



## Decimal 11369277 Background



This preview shows how black text looks on a background with the Decimal color 11369277.



This preview shows how white text looks on a background with the Decimal color 11369277.

# Color Blindness Simulation

Color vision deficiency is a very complex topic, and I could not describe the different causes any better than Wikipedia does, so if you want to learn more, you should check out their [article about color blindness](#).


## Dichromacy



**Original Color**  
11369277

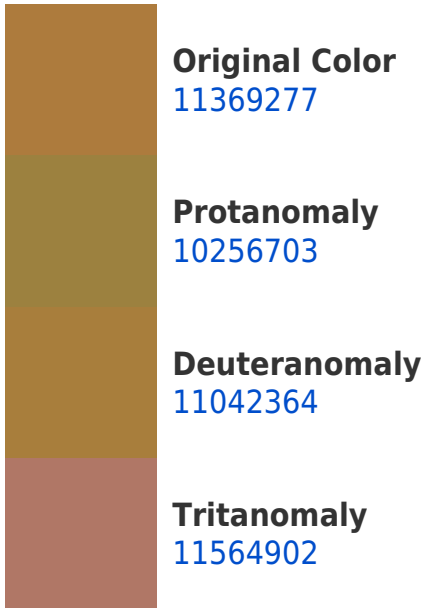
**Protanopia**  
9667904

**Deuteranopia**  
10846012

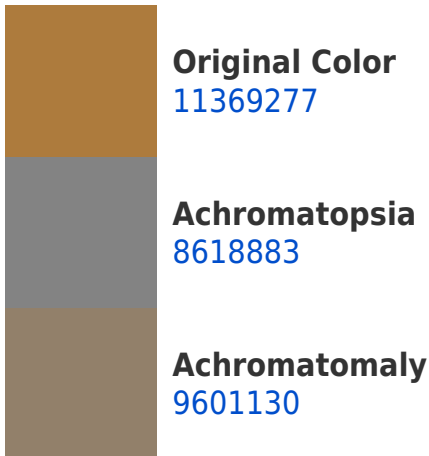


**Tritanopia**  
11695229

# Trichromacy



# Monochromacy



# CSS Examples

## Text

The CSS property to change the color of the text to Decimal 11369277 is called "color". The color property can be set on classes, ids or directly on the HTML element.

This example shows how text in the color #AD7B3D looks like.

```
.text, #text, p{  
    color:#AD7B3D  
}
```

If you want to add a text shadow in that color use the text-shadow property, you can generate a text shadow directly with our [CSS Text Shadow Generator](#).

Here you see how black text with a 4 pixel #AD7B3D colored shadow looks like.

```
.shadow{ text-shadow: 4px 4px 2px #AD7B3D
}
```

## Border

The CSS property to change the border of an element to Decimal 11369277 is called "border". The border property can be set on classes, ids or directly on the HTML element.

This example shows the color as border, it can be applied via the CSS property "border" or "border-color".

```
.border, #border, table{ border:4px solid
#AD7B3D }
```

If only the border color should be changed use the property `border-color`.

```
.border{ border-color:#AD7B3D }
```

If you want to add a box shadow in that color use:

Here you see how a box with a 4 pixel #AD7B3D colored shadow looks like.

```
.boxshadow{ -moz-box-shadow:4px 4px 4px  
4px #AD7B3D; -webkit-box-shadow:4px 4px  
4px 4px #AD7B3D; box-shadow:4px 4px 4px  
4px #AD7B3D }
```

# Background

The CSS property to change the background color of an element to Decimal 11369277 is called "background". The background property can be set on classes, ids or directly on the HTML element.

```
.background, #background, body{  
background:#AD7B3D }
```

If only the background color should be changed can be used:

```
.background{ background-color:#AD7B3D }
```

This example shows the color as background, it is applied via the CSS property "background".

To optimize and compress your CSS code, you can use our [online CSS compressor and optimizer](#) based on csstidy. If you want to create a linear or radial gradient as background or border, check our [CSS Gradient Generator](#).



Hey! You found this booklet interesting? Support Converting Colors with the new Membership Option!

The pro membership hides all ads, plus gives you double the colors in the color bucket, and more awesome pro features!

**[Learn more, Memberships starting at \\$2.50/m!](#)**

**Follow me  
on Twitter!**

@ConvertingColor